



The PsychU Guide To The Illinois Mental Health System

This resource is provided for informational purposes only and is not intended as reimbursement or legal advice.

You should seek independent, qualified professional advice to ensure that your organization is in compliance with the complex legal and regulatory requirements governing health care services, and that treatment decisions are made consistent with the applicable standards of care.

Except as otherwise indicated, the information provided is accurate to the best of Otsuka's knowledge as of June 2016.

Contents

PsychU Guide To The Illinois Mental Health System

A. Health Care Marketplace Overview

1. Physical Health Care Coverage Map
2. Population Demographics
3. Population Distribution By Payer: United States V. Illinois
4. Largest Health Plans By Enrollment
5. Largest Health Plans By Estimated SMI Enrollment
6. Health Insurance Marketplace Overview
7. Health Insurance Marketplace Plans

B. Medicaid System Overview

8. Delivery System, Risk, & Federal Participation
9. Expansion Decision
10. Care Coordination Entities
11. The Uninsured
12. Organizational Chart
13. Key Leadership
14. Program Benefits

C. Medicaid Financing & Service Delivery System

15. Overview
16. Enrollment By Eligibility Group
17. FFS Program: Program Overview
18. FFS Program: BH Benefits
19. FFS Program: SMI Population
20. Managed Care Program: Program Overview
21. Managed Care Program: Regional Overview
22. Managed Care Program: BH Benefits
23. Managed Care Program: SMI Population
24. Care Coordination Initiatives
25. Care Coordination Initiatives: ACE & CCE
26. Program Waivers Impacting The SMI Population

D. Behavioral Health Administration & Finance System

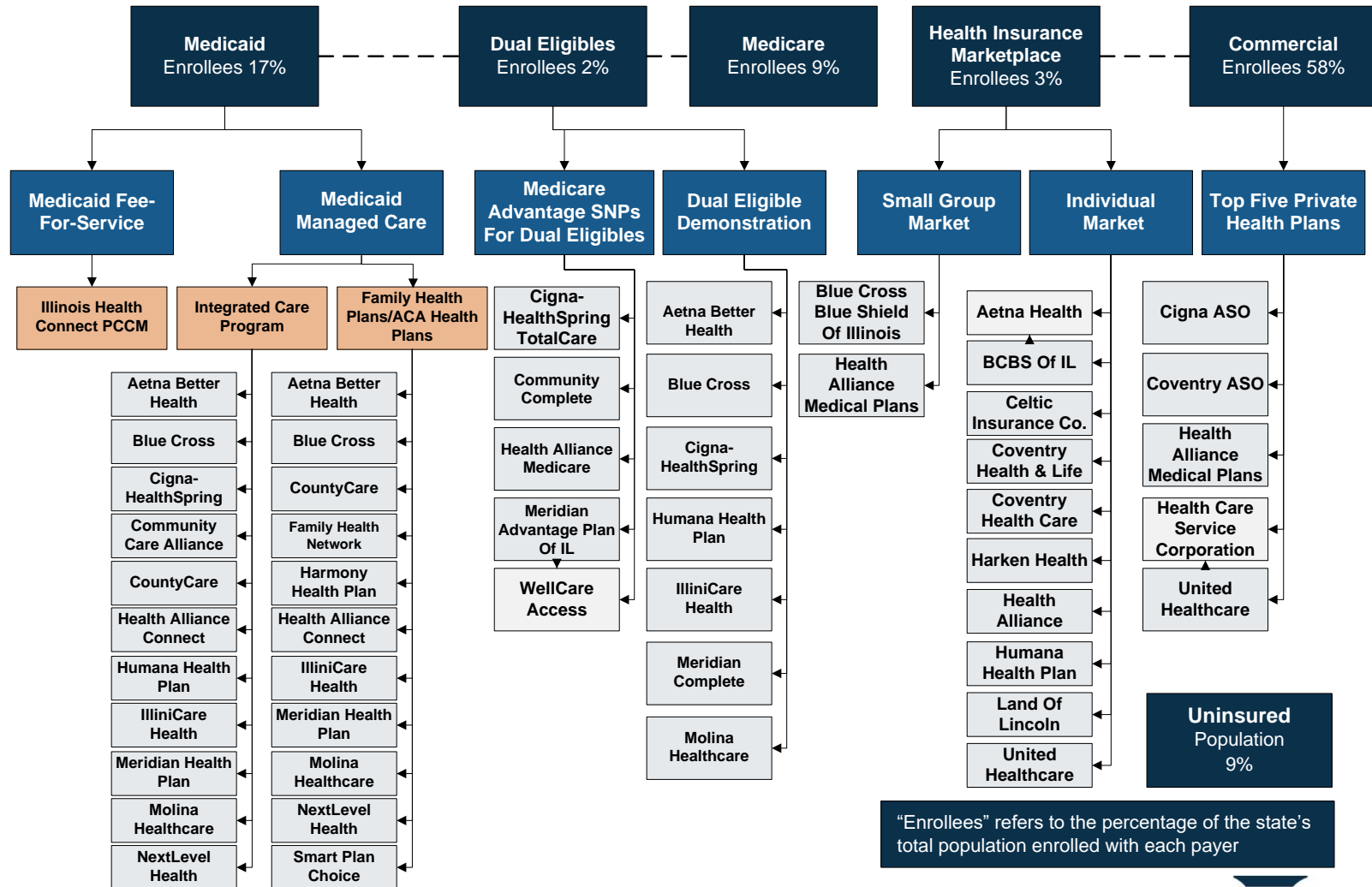
27. DHS Organizational Chart
28. DHS Key Leadership
29. State Psychiatric Institutions
30. ACOs

Appendix A: Sources

ACOs = Accountable Care Organizations
ACE = Accountable Care Entities
BH = Behavioral Health
CCE = Care Coordination Entities
DHS = Department Of Human Services
FFS = Fee-For-Service
MCOs = Managed Care Organizations
SMI = Serious Mental Illness

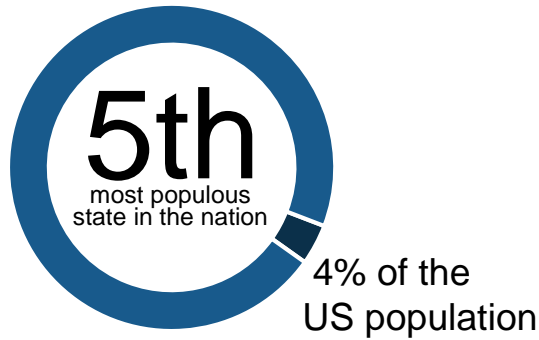
A. ILLINOIS HEALTH CARE MARKETPLACE OVERVIEW

1. Physical Health Care Coverage Map

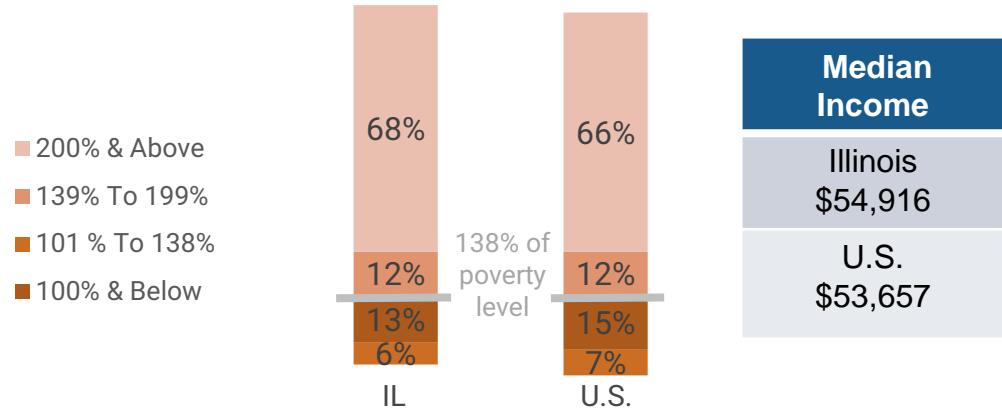


2. Population Demographics

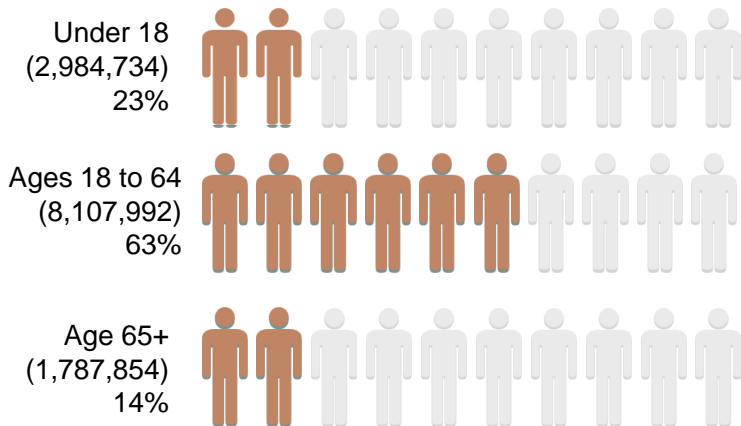
Total Illinois Population - 12,880,580
 SMI Population - 598,699



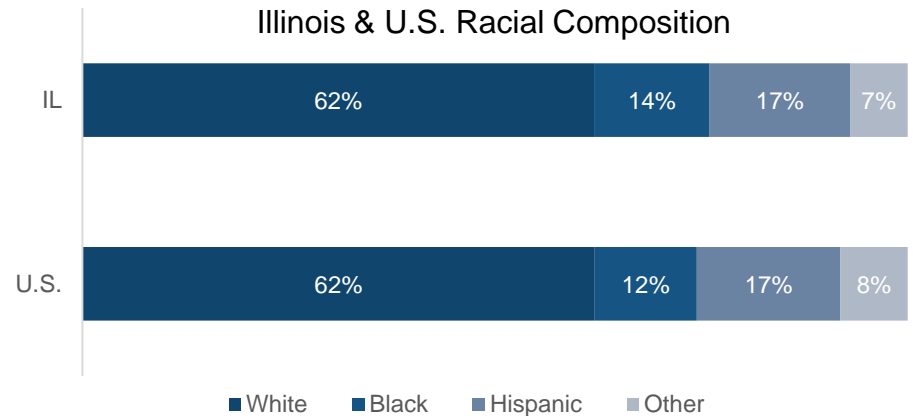
Population Distribution By Income To Poverty Threshold Ratio



Population Distribution By Age

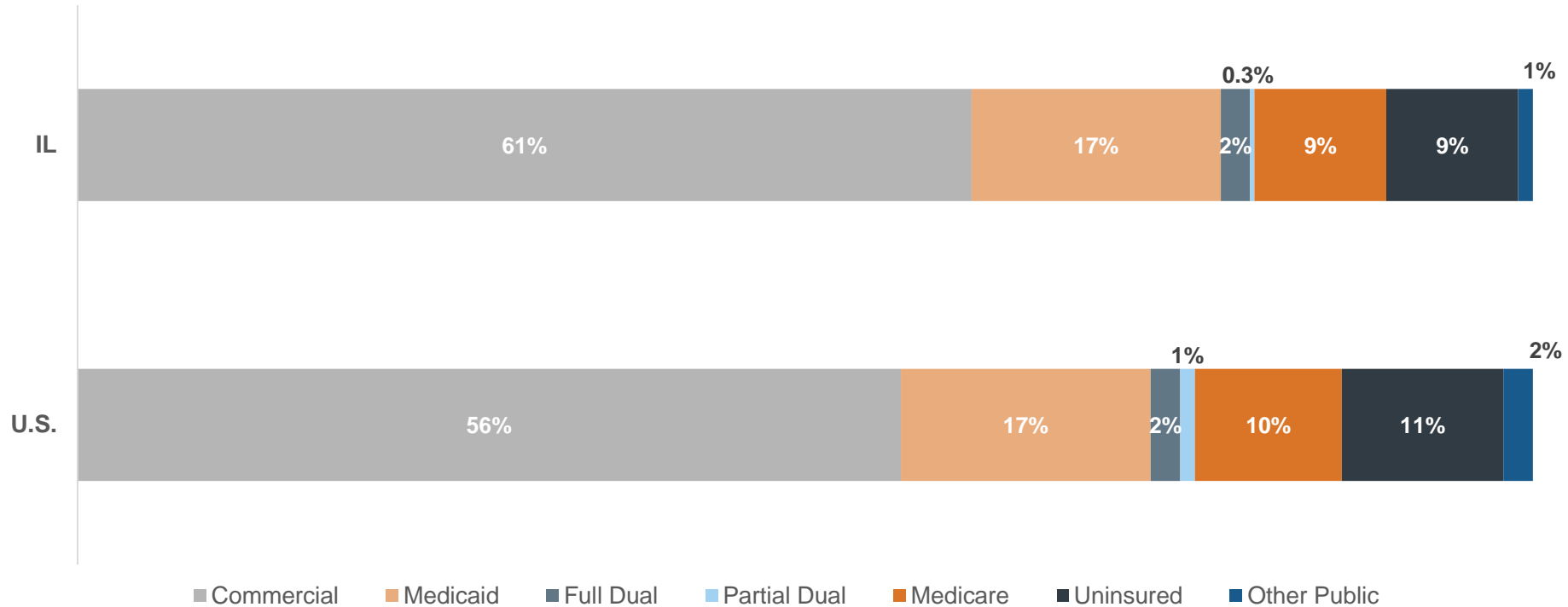


Illinois & U.S. Racial Composition



SMI = Serious Mental Illness

3. Population Distribution By Payer: United States v. Illinois



4. Largest Health Plans By Enrollment

| Plan Name | Plan Type | Enrollment* |
|---------------------------------|---|-------------|
| Health Care Service Corporation | Commercial | 8,086,368 |
| Medicare FFS | Medicare | 1,476,750 |
| Medicaid FFS | Medicaid | 1,100,731 |
| UnitedHealthcare | Commercial | 704,106 |
| Cigna | Commercial Administrative Services Only (ASO) | 516,312 |
| Coventry | Commercial ASO | 487,041 |
| Meridian Health Plan | Medicaid | 349,026 |
| Illinois Health Connect | Medicaid PCCM | 322,912 |
| Blue Cross Blue Shield | Medicaid | 281,474 |
| Health Alliance Medical Plans | Commercial | 255,863 |

*Commercial and Medicare enrollment as of 2014. Medicaid enrollment as of May 2016.

FFS = Fee-For-Service
PCCM = Primary Care Case Management

5. Largest Health Plans By Estimated Serious Mental Illness (SMI) Enrollment

| Plan Name | Plan Type | Enrollment* | SMI Enrollment |
|---------------------------------|----------------|-------------|----------------|
| Medicare FFS | Medicare | 1,476,750 | 248,094 |
| Health Care Service Corporation | Commercial | 8,086,368 | 193,102 |
| Medicaid FFS | Medicaid | 1,100,731 | 66,296 |
| Illinois Health Connect | Medicaid PCCM | 322,912 | 19,449 |
| Meridian Health Plan | Medicaid | 349,026 | 19,448 |
| UnitedHealthcare | Commercial | 704,106 | 16,814 |
| Blue Cross Blue Shield | Medicaid | 281,474 | 15,684 |
| Family Health Network | Medicaid | 240,316 | 13,390 |
| Cigna | Commercial ASO | 516,312 | 12,330 |
| Coventry | Commercial ASO | 487,041 | 11,631 |

*Commercial and Medicare enrollment as of 2014. Medicaid enrollment as of May 2016.

ASO = Administrative Service Only
FFS = Fee-For-Service
PCCM = Primary Care Case Management

6. Health Insurance Marketplace Overview

| Health Insurance Marketplace | |
|-----------------------------------|--|
| Type Of Marketplace | <ul style="list-style-type: none"> Federal – State Partnership |
| Individual Enrollment Contact | <ul style="list-style-type: none"> www.healthcare.gov 1-800-318-2596 |
| Small Business Enrollment Contact | <ul style="list-style-type: none"> www.healthcare.gov/small-businesses 1-800-706-7893 |

7. Health Insurance Marketplace Plans

Individual Market Health Plans

- Aetna Health, Inc.
- Blue Cross Blue Shield of Illinois
- Celtic Insurance Company
- Coventry Health and Life Co.
- Coventry Health Care of Illinois, Inc.
- Harken Health Insurance Company
- Health Alliance Medical Plans, Inc.
- Humana Health Plan, Inc.
- Land of Lincoln Mutual Health Insurance Company
- UnitedHealthcare of the Midwest, Inc.

Small Group Market Plans

- Blue Cross Blue Shield of Illinois
- Health Alliance Medical Plans, Inc.

B. ILLINOIS MEDICAID SYSTEM OVERVIEW

8. Delivery System, Risk, & Federal Participation

| Medicaid Financial Delivery System | |
|--|--|
| Is Managed Care Mandatory For Populations With Serious Mental Illness (SMI)? | Yes, in mandatory managed care geographic regions |
| Is Managed Care Mandatory For Dual-Eligibles? | No |
| Total Medicaid Population Distribution | <ul style="list-style-type: none"> 35% in fee-for-service (FFS) 65% in managed care |
| Medicaid Beneficiaries With SMI: <i>Primary Service System</i> | <p><i>OPEN MINDS</i> estimates that 52% of the SMI population is served by managed care.</p> <ul style="list-style-type: none"> Mandatory managed care regions: <i>OPEN MINDS</i> estimates that 60% of the SMI population is served by managed care Non-mandatory managed care counties: The majority of the population is enrolled in FFS, as there are no managed care plans serving the disabled population in those counties. |
| Medicaid Financing & Risk Arrangements: Behavioral Health | |
| Traditional Behavioral Health Services | <ul style="list-style-type: none"> Fee-for-service population: Covered FFS by the state Managed care population: Included in the managed care organization's (MCO's) capitation rate |
| Specialty Behavioral Health Services | |
| Pharmaceuticals | |
| Federal Financial Participation | |
| FY 2017 Federal Medical Assistance Percentage (FMAP) | 51.30% |
| CY 2016 Newly Eligible FMAP (Expansion Population) | 100% |

9. Expansion Decision

| State Medicaid Expansion Decision | |
|--|---|
| Participating In Expansion? | Yes |
| Date Of Expansion | 2014 |
| Medicaid Eligibility Income Limit For Able-Bodied Adults | 133% of FPL Note: The PPACA requires that 5% of income be disregarded with determining eligibility |
| Legislation Used To Expand Medicaid | Senate Bill 26, 98 th General Assembly |
| Medicaid Expansion Enrollees (As Of September 2015) | 655,224 |

FPL = Federal Poverty Level

10. Care Coordination Entities

Medicaid Care Coordination Entities For Chronic Care Populations (Including SMI)

| | | |
|--|---|--|
| Managed Care Plan | | None |
| Accountable Care Organization (ACO) Program | | Illinois' ACO members transitioned to full-risk managed care in 2016. |
| Health Home | | None, but Illinois has indicated an intention to submit a SPA to implement health homes in the future. |
| Medical Home | | None |
| Primary Care Case Management Model (PCCM) | ✓ | Participation in an Illinois Health Connect PCCM is required for most populations in counties where managed care is not mandatory. |

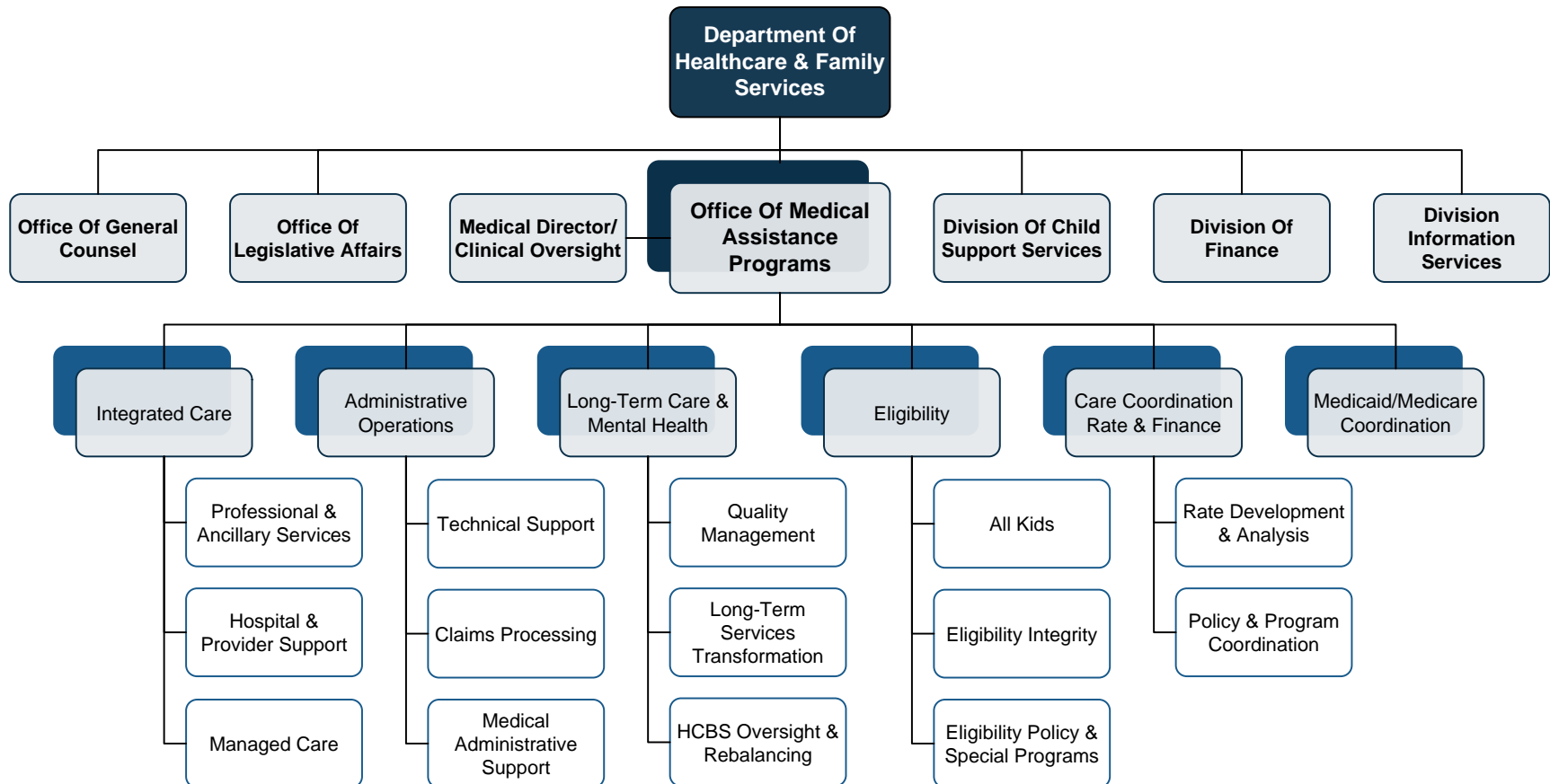
ACOs = Accountable Care Organizations
SPA = State Plan Amendment
SMI = Serious Mental Illness

11. The Uninsured

State Agency Responsible For Uninsured Citizens & Delivery System Model

| | |
|-------------------------------------|--|
| Physical Health Services | The Illinois Department of Public Health provides funding for physical health services for the safety-net population. |
| Mental Health Services | The Illinois Department of Human Services (DHS) Division of Mental Health (DMH) provides funding for mental health services for the safety-net population. |
| Addiction Treatment Services | DHS is the agency responsible for funding addiction treatment programs for the safety-net population. |

12. Organizational Chart



13. Key Leadership

| Name | Position | Department |
|---------------------------|--|--|
| Felicia F. Norwood | Director | Department Of Healthcare & Family Services |
| Teresa Hursey | Acting Medicaid Director | Division Of Medical Programs |
| Kelly Cunningham | Deputy Administrator For Long-Term Care | Division Of Medical Programs |
| Jacquetta Ellinger | Deputy Administrator Of Eligibility Policy | Division Of Medical Programs |
| Robert Mendonsa | Deputy Administrator Of Care Coordination | Division Of Medical Programs |

14. Program Benefits

Federally Mandated Services

- Inpatient hospital services other than services in an institution for mental disease (IMD)
- Outpatient hospital services
- Rural Health Clinic services
- Federally Qualified Health Center (FQHC) services
- Laboratory and X-ray services
- Nursing facilities for individuals 21 and over
- Early and Periodic Screening and Diagnosis and Treatment (EPSDT)
- Family planning services and supplies for individuals of child-bearing age
- Physician services
- Medical and surgical services of a dentist
- Home health services
- Nurse midwife services
- Nurse practitioner services
- Pregnancy services, including tobacco cessation programs
- Free standing birth centers
- Non-emergency transportation to medical care

Illinois' Optional Services

- Case management services
- Chiropractic services
- Clinic services
- Dental services
- Diagnostic services
- Eyeglasses
- Home and community-based services
- Hospice care services
- Occupational and physical therapy
- Other practitioner services
- Podiatric services
- Prescribed drugs
- Preventive services
- Prosthetic devices
- Rehabilitative services
- Speech, hearing, and language therapy services
- Tuberculosis services
- Inpatient psychiatric services and nursing facility services for individuals 21 and under
- Intermediate care facility for the developmentally disabled (ICF/DD)

C. ILLINOIS MEDICAID FINANCING & SERVICE DELIVERY SYSTEM

15. Overview

| Medicaid System Characteristics | | |
|---------------------------------|--|--|
| Characteristics | Medicaid Fee-For-Service (FFS) | Medicaid Managed Care |
| Enrollment (May 2016) | 1,100,731 | 2,069,269 |
| SMI Enrollment | 88,302 | 97,148 |
| Management | <ul style="list-style-type: none"> Acute Services: Department of Healthcare and Family Services Behavioral Health Services: Managed by Beacon Health Options (ASO) | Thirteen MCOs and MCCNs |
| Payment Model | <ul style="list-style-type: none"> Acute and Behavioral Health Services: FFS Additional care coordination fee for those enrolled in Illinois Health Connect (PCCM) | Capitated rate |
| Geographic Service Area | <ul style="list-style-type: none"> FFS: Statewide Illinois Health Connect (PCCM): Available in non-mandatory managed care regions only | <ul style="list-style-type: none"> Five mandatory managed care regions encompassing 30 counties Fifteen counties with non-mandatory managed care plans |

Total Medicaid Beneficiaries: 3,170,000 | Total Medicaid With SMI Beneficiaries: 185,450

ASO = Administrative Service Only
PCCM = Primary Care Case Management

MCCN = Managed Care Community Network
SMI = Serious Mental Illness

MCOs = Managed Care Organizations

16. Enrollment By Eligibility Group

Mandatory Fee-For-Service (FFS) Enrollment

1. Residents of counties where no managed care plans are offered
2. Children under 19 who are eligible for SSI under Title XVI
3. Children under 19 who are in foster care or out of home placement
4. Children under 19 who are receiving foster care or adoption assistance under Title IV-E
5. Children under 19 who are eligible under 1902(e)(3) of the act
6. Individuals receiving partial benefits

Option To Enroll In FFS Or Managed Care

1. Dual eligibles in counties with dual demonstration
2. American Indians/Alaskan Natives
3. Residents outside the mandatory managed care regions where a managed care plan is offered

Mandatory Managed Care Enrollment

Members of the following populations who are residents of mandatory managed care counties:

1. Children
2. Parents and caretaker relatives
3. Medicaid expansion population
4. Aged, blind, and disabled population

17. Fee-For-Service (FFS) Program: Program Overview

- Fee-for-service (FFS) enrollment as of May 2016 was 1,100,731.
- Illinois considers its primary care case management (PCCM) program, Illinois Health Connect (IHC), a FFS program, and its enrollment count is included in the FFS population.
 - As of May 2016, PCCM enrollment was 322,912.
 - The PCCM program is available for beneficiaries residing in non-mandatory managed care counties only.
 - The PMPM case management fee is \$2.00 for children, \$3.00 for adults, and \$4.00 for disabled or elderly adults.
- In the PCCM counties, IHC enrollment:
 - Is mandatory for most children and families, the ACA expansion population, and the non-dual aged, blind, and disabled population
 - Is optional for the dual eligible and Native American populations
 - Excludes certain children



18. Fee-For-Service (FFS) Program: Behavioral Health Benefits

Beacon Health Options serves as the behavioral health care ASO for the traditional FFS and Illinois Health Connect populations.

FFS Mental Health Benefits

1. Crisis intervention
2. Psychotropic medication administration, management, and training
3. Individual, family, and group psychotherapy
4. Community support
5. Assertive community treatment (ACT)
6. Psychosocial rehabilitation services
7. Mental health intensive outpatient
8. Case management
9. Transition linkage and aftercare

FFS Substance Abuse Treatment Benefits

1. Admission and discharge assessment
2. Individual and group counseling
3. Detoxification
4. Medically monitored detoxification
5. Day treatment
6. Residential adolescent rehabilitation
7. Medication monitoring
8. Psychiatric diagnostic

ASO = Administrative Service Only

19. Fee-For-Service (FFS) Program: Serious Mental Illness (SMI) Population

- 48% of the SMI population is estimated to be served in the FFS delivery system.
 - Non-mandatory managed care counties: The majority of the population is enrolled in FFS, as there are no managed care plans serving the disabled population in those counties.
 - Mandatory managed care regions: *OPEN MINDS* estimates that 60% of the SMI population is served by managed care.



20. Managed Care Program: Program Overview

- Managed care enrollment as May 2016 was 2,069,269.
- There are three Medicaid programs available in the counties where managed care enrollment is mandatory:
 - Family Health Plans/Affordable Care Act Health Plans (FHP/ACA): Delivers Medicaid services to parents and families, most children, and the ACA expansion population. Enrollment is mandatory in 30 counties.
 - Integrated Care Program (ICP): Delivers Medicaid services to the non-dual eligible aged, blind, and disabled population. Enrollment is mandatory in 30 counties.
 - Medicare-Medicaid Alignment Initiative: Delivers Medicaid services to the dual eligible population.
- Additionally, some health plans may choose to operate in counties without mandatory managed care. Medicaid enrollees must opt-in to managed care in these counties.
 - There are FHP/ACA plans that operate in 15 non-mandatory counties.
- Illinois Medicaid contracts with two types of managed care health plans:
 - Managed Care Organizations (MCOs): Traditional insurance-based health maintenance organizations that are paid on a full-risk capitated basis to cover almost all Medicaid services.
 - Managed Care Community Networks (MCCNs): Provider-owned and local government health system entities that operate like MCOs and are paid on a full-risk capitated basis to cover almost all Medicaid services.
- Prior to 2016, the Illinois Medicaid program contracted with Accountable Care Entities (ACEs) and Care Coordination Entities (CCEs). The CCEs and ACEs either transitioned their membership to MCO/MCCNs or were acquired by MCO/MCCNs in 2016.

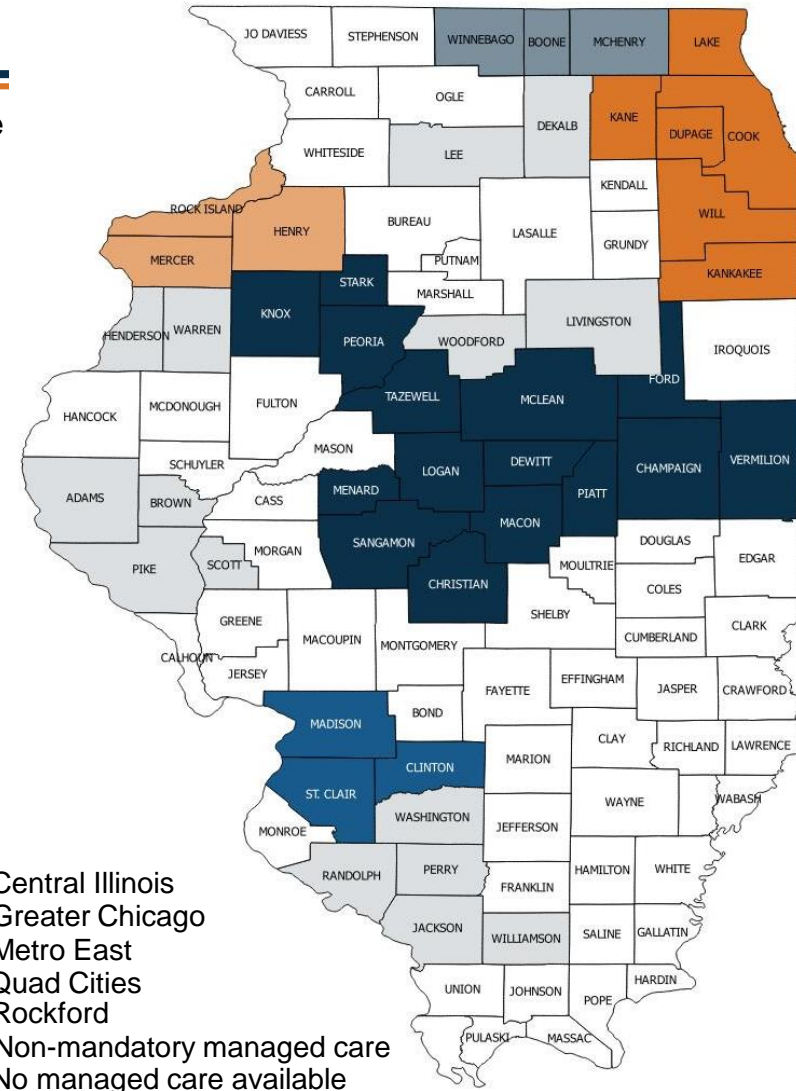
21. Managed Care Program: Regional Overview

There are five regions, encompassing 30 counties, where managed care is mandatory for children and families, Accountable Care Act (ACA) expansion adults, and the non-dual eligible aged, blind, and disabled population.

In the other 72 counties, managed care is optional and dependent upon the plans that are available.

| Region | Fee-For-Service (FFS) Enrollment* | Managed Care Enrollment* | Total Medicaid Enrollment* |
|--|-----------------------------------|--------------------------|----------------------------|
| Central Illinois | 87,742 | 219,313 | 307,055 |
| Greater Chicago | 523,286 | 1,589,445 | 2,112,731 |
| Metro East | 37,247 | 105,976 | 143,223 |
| Quad Cities | 15,876 | 36,767 | 52,643 |
| Rockford | 42,618 | 107,924 | 150,442 |
| Non-Mandatory Managed Care Plans Available | 111,871 | 9,844 | 121,715 |
| No Managed Care Available | 349,125 | -- | 349,125 |

*Total enrollment as of FY 2015. Managed care enrollment as of May 2016. FFS enrollment derived by subtraction.



22. Managed Care Program: Behavioral Health Benefits

Behavioral health and pharmacy benefits are included in the MCO and MCCNs' capitation rate.

Managed Care Mental Health Benefits

1. Crisis intervention
2. Psychotropic medication administration, and training
3. Individual, family, and group psychotherapy
4. Community support
5. Assertive community treatment (ACT)
6. Psychosocial rehabilitation services
7. Mental health intensive outpatient
8. Case management
9. Transition linkage and aftercare

Managed Care Substance Abuse Treatment Benefits

1. Admission and discharge assessment
2. Individual and group counseling
3. Detoxification
4. Medically monitored detoxification
5. Day treatment
6. Residential adolescent rehabilitation
7. Medication monitoring
8. Psychiatric diagnostic

MCCN = Managed Care Community Network
MCOs = Managed Care Organizations

23. Managed Care Program: Serious Mental Illness (SMI) Population

- 52% of the SMI population is estimated to be served by managed care.
 - Non-mandatory managed care counties: The majority of the population is enrolled in fee-for-service (FFS), as there are no managed care plans serving the disabled population in those counties.
 - Mandatory managed care regions: *OPEN MINDS* estimates that 60% of the SMI population is served by managed care.



24. Care Coordination Initiatives

- Illinois' pending 1115 waiver, Path to Transformation, includes plans to submit a state plan amendment (SPA) to create health homes for individuals with serious mental illness (SMI); however, no amendment has been submitted as of June 2016.
- Illinois' Medicaid accountable care organization (ACO) membership will transition to full-risk managed care by July 2016, but most ACOs will continue to coordinate care for their members through agreements with partnering MCOs/MCCNs.



MCCN = Managed Care Community Network
MCOs = Managed Care Organizations

25. Care Coordination Initiatives: Accountable Care Entities (ACE) & Care Coordination Entities (CCE)

- Accountable Care Entities (ACEs) for children, families, and ACA adults and Care Coordination Entities (CCEs) for seniors, persons with disabilities and children with special needs served as transitional organizations as the state moved toward increasing implementation of full-risk managed care.
- The ACEs and CCEs functioned as accountable care organizations (ACOs), providing care coordination for risk and performance-based fees, but receiving compensation for other services on a fee-for-service basis.
- CCEs and ACEs were funded through 2015 by the state. As of January 1, 2016, the state discontinued making per member per month care coordination payments to the ACOs.
- The 17 ACOs in the program transitioned their membership to MCO/MCCNs, reorganized themselves into MCO/MCCNs, or subcontracted with MCOs to provide care coordination during SFY 2016.

MCCN = Managed Care Community Network

MCOs = Managed Care Organizations

26. Program Waivers Impacting The Serious Mental Illness (SMI) Population

| Waiver Title | Waiver Description | Waiver Type | 2016 Enrollment Cap | Effective Date | Expiration Date |
|--|---|-------------|---------------------|----------------|-----------------|
| IL MLTSS Waiver (IL-01) (concurrent with IL Supportive Living Program Waiver) | Provides HCBS through prepaid inpatient health plans to dual eligibles who reside in the Greater Chicago and Central Illinois regions. | 1915 (b) | None | 06/01/14 | 05/31/19 |
| IL Supportive Living Program (0326.R03.00) (concurrent with IL MLTSS Waiver) | Provides assisted living services for physically disabled individuals ages 22 to 64 and persons over the age of 65 who require a nursing facility level of care. | 1915 (c) | 13,800 | 07/01/12 | 06/30/17 |
| IL HCBS Waiver for Persons Who are Elderly (0143.R05.00) | Provides home and community-based services (HCBS) to physically disabled individuals ages 60 to 64 and individuals over the age of 65 who require a nursing facility level of care. | 1915 (c) | 44,250 | 01/01/14 | 12/31/18 |
| IL Persons with Disabilities (0142.R05.00) | Provides HCBS for physically disabled individuals ages 0 to 59 who require a nursing facility level of care. | 1915 (c) | 33,489 | 01/01/14 | 12/31/18 |

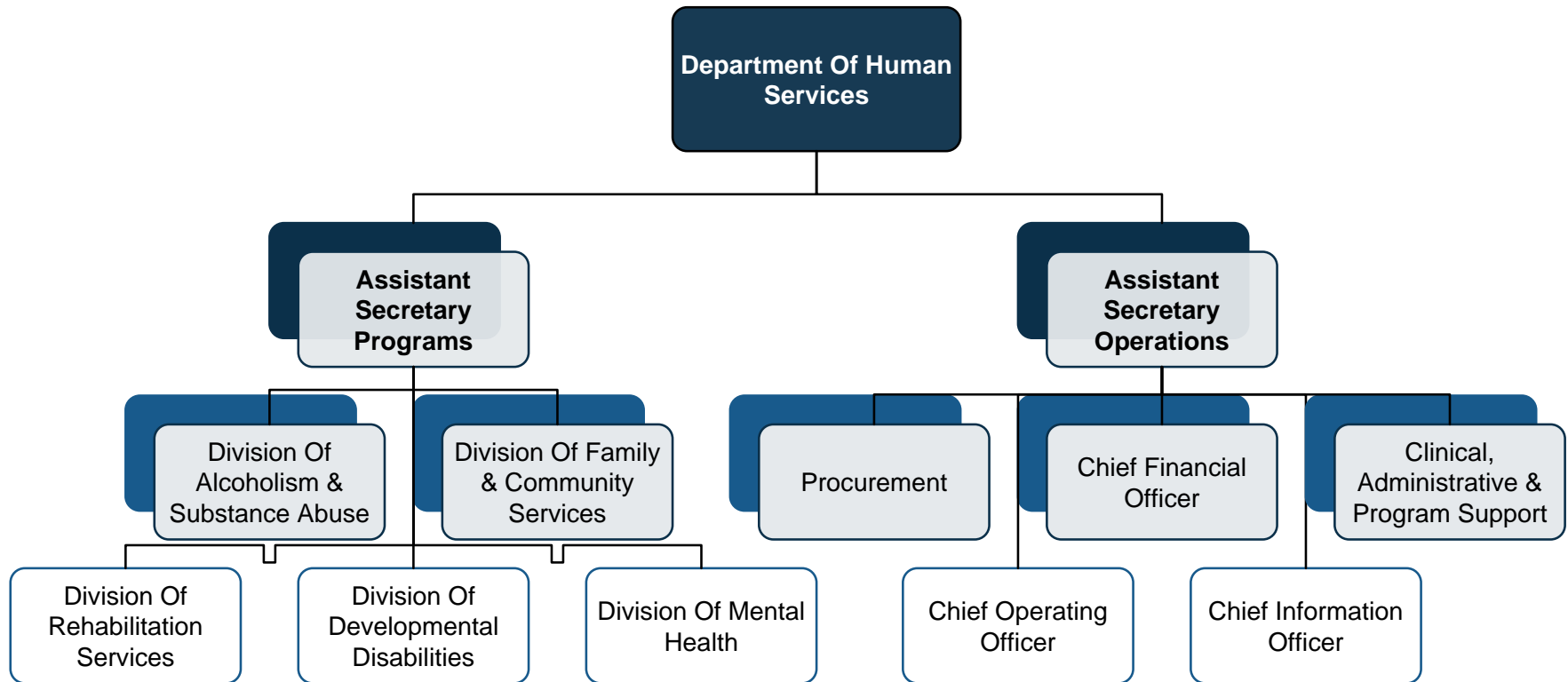
Program Waivers Impacting The Serious Mental Illness (SMI) Population (*Continued*)

| Waiver Title | Waiver Description | Waiver Type | 2016 Enrollment Cap | Effective Date | Expiration Date |
|---|---|-------------|---------------------|----------------|-----------------|
| IL HCBS Waiver for Persons with Brain Injury (0329.R03.00) | Provides HCBS for persons of all ages with a brain injury who require a nursing facility level of care. | 1915 (c) | 4,905 | 07/01/12 | 06/30/17 |
| The Path To Transformation* | Details Illinois' plan to consolidate its nine HCBS waivers and use the savings to implement programs for individuals with SMI. | 1115 | -- | Pending* | Pending* |

*The Path to Transformation waiver proposal was submitted in 2014 under a previous Governor's administration. Although the Centers For Medicare & Medicaid Services (CMS) lists its status as pending, it is most likely stalled awaiting review and revision by Governor Rauner's administration.

D. ILLINOIS BEHAVIORAL HEALTH ADMINISTRATION & FINANCE SYSTEM

27. Department Of Human Services (DHS) Organizational Chart



28. Department Of Human Services (DHS) Key Leadership

| Name | Position | Department |
|-----------------------|-----------------------------------|---|
| James T. Dimas | Secretary | DHS |
| <i>Vacant</i> | Assistant Secretary Of Programs | DHS |
| <i>Vacant</i> | Assistant Secretary Of Operations | DHS |
| Maria Bruni | Acting Director | Division Of Alcoholism |
| Greg Fenton | Director | Division Of Developmental Disabilities |
| Diane Grigsby-Jackson | Director | Division Of Family & Community Services |
| Diana Knaebe | Director | Division Of Mental Health |
| Kris Smith | Director | Division Of Rehabilitation Services |

29. State Psychiatric Institutions

| Institution | Location | Beds | FY 2015 Average Daily Census |
|-----------------------------------|-------------|--------------|------------------------------|
| Alton Mental Health Center | Alton | 125 | 121 |
| Chester Mental Health Center | Chester | 302 | 248 |
| Chicago-Read Mental Health Center | Chicago | 130 | 111 |
| Choate Mental Health Center | Anna | 79 | 78 |
| Elgin Mental Health Center | Elgin | 390 | 387 |
| Madden Mental Health Center | Hines | 173 | 117 |
| McFarland Mental Health Center | Springfield | 140 | 131 |
| Total | | 1,339 | 1,193 |

30. Accountable Care Organizations (ACOs)

Medicare Shared Savings Program

- | | |
|---|--|
| 1. Adena Healthcare Collaborative, LLC | 18. Illinois Rural Community Care Organization (IL-RCCO) |
| 2. Advocate Physician Partners Accountable Care, Inc. | 19. Independent Physicians ACO of Chicago, LLC |
| 3. Alexian Brothers ACO | 20. Ingalls Care Network, LLC |
| 4. AmpliPHY of Kentucky ACO, LLC | 21. Iowa Health Accountable Care, LLC |
| 5. Baptist Health Care Partners, LLC | 22. Iowa Rural ACO |
| 6. BJC HealthCare ACO, LLC | 23. Jackson Purchase Medical Associates, PSC |
| 7. Centegra Health and Wellness Network | 24. Loyola Physician Partners ACO, LLC |
| 8. Chicago Health System ACO, LLC | 25. Medicare Value Partners |
| 9. Christie Clinic Physician Services, LLC | 26. Mercy Health System ACO |
| 10. Deaconess Care Integration, LLC | 27. Northwestern Medicine Physician Partners ACO |
| 11. Franciscan Alliance ACO | 28. OSF Healthcare System |
| 12. Franciscan Union ACO | 29. Primary Comprehensive Care ACO, LLC |
| 13. Genesis ACO, LLC | 30. Rockford Health System |
| 14. Heartland Physicians ACO, Inc. | 31. Springfield Clinic ACO, LLC |
| 15. Hospital Sisters HealthSystem ACO, LLC | 32. SSM ACO, LLC |
| 16. Illinois Health Partners ACO, LLC | 33. St. Louis Physician Alliance ACO, LLC |
| 17. Illinois Rural ACO | |

Commercial

| ACO | Commercial Insurer |
|--|--|
| Adventist Health-Illinois | Cigna |
| Advocate Health Care | UnitedHealthcare |
| AdvocateCare | BCBS of Illinois |
| Alexian Brothers ACO | BCBS of Illinois |
| BCBSIL / NorthShore University HealthSystem | BCBS of Illinois |
| Franciscan Alliance ACO | Anthem Blue Cross and Blue Shield, Cigna |
| Genesis ACO, LLC | Wellmark |
| Iowa Health Accountable Care, LLC | UnitedHealthcare, Wellmark |
| Kane County IPA | BCBS of Illinois |
| Northwestern Medicine Physician Partners ACO | Cigna |
| OSF Healthcare System | BCBS of Illinois |
| Presence Health Partners | Cigna |
| Rockford Health System | Humana |
| United Hospital System | Humana |

APPENDIX A: SOURCES

Sources

(Page 1 Of 9)

A. Health Care Marketplace Overview

1. Physical Health Care Coverage Map

- United States Department of Health and Human Services. (2015, December 22). 2016 QHP Landscape Individual Market Medical. Retrieved February 8, 2016 from <https://data.healthcare.gov/dataset/2016-QHP-Landscape-Individual-Market-Medical-Excel/k2hw-8vcp>
- United State Department of Health and Human Services. (2015, December 22). 2016 QHP Landscape SHOP Market Medical. Retrieved February 8, 2016 from <https://data.healthcare.gov/dataset/2016-QHP-Landscape-SHOP-Market-Medical-Excel/vcra-66c2>
- United States Department of Health and Human Services. (March 11, 2016). Addendum to the Health Insurance Marketplaces 2016 Open Enrollment Period: Final Enrollment Report. Retrieved March 24, 2016 from <https://aspe.hhs.gov/sites/default/files/pdf/188026/MarketPlaceAddendumFinal2016.pdf>
- Illinois Department of Healthcare and Family Services. (2016, May 1). Total Care Coordination Enrollment for All Programs. Retrieved June 9, 2016 from <http://www.illinois.gov/hfs/MedicalProviders/cc/Pages/TotalCCErollmentforAllPrograms.aspx>
- OPEN MINDS Database

2. Population Demographics

- United States Census Bureau. 2014 Population Estimates. Retrieved May 3, 2016 from <http://www.census.gov/popest/data/state/totals/2014/index.html>
- United States Census Bureau. 2014 Demographic and Housing Estimates. Retrieved May 3, 2016 from <http://factfinder.census.gov/faces/nav/jsf/pages/index.xhtml>
- United States Census Bureau. State Median Income. Retrieved May 3, 2016 from <https://www.census.gov/hhes/www/income/data/statemedian/index.html>
- United States Census Bureau. Poverty. Retrieved May 3, 2016 from https://www.census.gov/hhes/www/cpstables/032015/pov/pov46_002.htm

3. Population Distribution By Payer: United States v. Illinois

- OPEN MINDS. (2016) *Serious Mental Illness Prevalence Estimates*.

Sources

(Page 2 Of 9)

A. Health Care Marketplace Overview (Continued)

4. Largest Health Plans By Enrollment

- OPEN MINDS. (2016, March). Database
- Centers for Medicare and Medicaid Services. (2014). Medicare Geographic Variation State/County Table- All Beneficiaries. Retrieved April 29, 2016 from http://www.cms.gov/Research-Statistics-Data-and-Systems/Statistics-Trends-and-Reports/Medicare-Geographic-Variation/GV_PUF.html
- Illinois Department of Healthcare and Family Services. (2016, May). Enrollment for Family Health Plans/ACA Adults. Retrieved June 9, 2016 from <https://www.illinois.gov/hfs/MedicalProviders/cc/Pages/FHPEnrollment.aspx>
- Illinois Department of Healthcare and Family Services. (2016, May). Enrollment for Integrated Care Program. Retrieved June 9, 2016 from <http://www.illinois.gov/hfs/MedicalProviders/cc/Pages/ICPEnrollment.aspx>

5. Largest Health Plans By Estimated Serious Mental Illness (SMI) Enrollment

- OPEN MINDS. (2016, March). Database
- Centers for Medicare and Medicaid Services. (2014). Medicare Geographic Variation State/County Table- All Beneficiaries. Retrieved April 29, 2016 from http://www.cms.gov/Research-Statistics-Data-and-Systems/Statistics-Trends-and-Reports/Medicare-Geographic-Variation/GV_PUF.html
- Illinois Department of Healthcare and Family Services. (2016, May). Enrollment for Family Health Plans/ACA Adults. Retrieved June 9, 2016 from <https://www.illinois.gov/hfs/MedicalProviders/cc/Pages/FHPEnrollment.aspx>
- Illinois Department of Healthcare and Family Services. (2016, May). Enrollment for Integrated Care Program. Retrieved June 9, 2016 from <http://www.illinois.gov/hfs/MedicalProviders/cc/Pages/ICPEnrollment.aspx>

Sources

(Page 3 Of 9)

A. Health Care Marketplace Overview (Continued)

6. Health Insurance Marketplace Overview

- United States Department of Health and Human Services. (2015, December 22). 2016 QHP Landscape Individual Market Medical. Retrieved February 8, 2016 from <https://data.healthcare.gov/dataset/2016-QHP-Landscape-Individual-Market-Medical-Excel/k2hw-8vcp>
- United State Department of Health and Human Services. (2015, December 22). 2016 QHP Landscape SHOP Market Medical. Retrieved February 8, 2016 from <https://data.healthcare.gov/dataset/2016-QHP-Landscape-SHOP-Market-Medical-Excel/vcra-66c2>

7. Health Insurance Marketplace Plans

- United States Department of Health and Human Services. (2015, December 22). 2016 QHP Landscape Individual Market Medical. Retrieved February 8, 2016 from <https://data.healthcare.gov/dataset/2016-QHP-Landscape-Individual-Market-Medical-Excel/k2hw-8vcp>
- United State Department of Health and Human Services. (2015, December 22). 2016 QHP Landscape SHOP Market Medical. Retrieved February 8, 2016 from <https://data.healthcare.gov/dataset/2016-QHP-Landscape-SHOP-Market-Medical-Excel/vcra-66c2>

B. Medicaid System Overview

8. Delivery System, Risk, & Federal Participation

- Information compiled from sources provided throughout the profile.

9. Expansion Decision

- Information compiled from sources provided throughout the profile.

Sources

(Page 4 Of 9)

B. Medicaid System Overview (Continued)

10. Care Coordination Entities

- Information compiled from sources provided throughout the profile.

11. The Uninsured

- Information compiled from sources provided throughout the profile.

12. Organizational Chart

- Illinois Department of Healthcare and Family Services. (2014, March 28). Medicaid State Plan Amendment 13-0013-MM4. Retrieved June 8, 2016 from <https://www.medicaid.gov/State-resource-center/Medicaid-State-Plan-Amendments/Downloads/IL/IL-13-0013-MM4.pdf>

13. Key Leadership

- Illinois Department of Healthcare and Family Services. Executive Staff. Retrieved June 8, 2016 from <https://www.illinois.gov/hfs/About/Pages/ExecutiveStaff.aspx>

14. Program Benefits

- Centers for Medicare and Medicaid Services. Benefits. Retrieved June 8, 2016 from <https://www.medicaid.gov/Medicaid-CHIP-Program-Information/By-Topics/Benefits/Medicaid-Benefits.html>
- Centers for Medicare and Medicaid Services. Medicaid Benefits. Retrieved June 8, 2016 <https://www.medicaid.gov/Medicaid-CHIP-Program-Information/By-Topics/Waivers/1115/Downloads/List-of-Medicaid-and-CHIP-Benefits.pdf>
- Illinois Department of Healthcare and Family Services. (2016, February 9). Medical Assistance Program Annual Report. Retrieved June 8, 2016 from <https://www.youtube.com/watch?v=9-awREzSibl&feature=youtu.be>

Sources

(Page 5 Of 9)

C. Medicaid Financing & Service Delivery System

15. Overview

- Illinois Department of Healthcare and Family Services. (2016, May). Enrollment for Family Health Plans/ACA Adults. Retrieved June 9, 2016 from <https://www.illinois.gov/hfs/MedicalProviders/cc/Pages/FHPErollment.aspx>
- Illinois Department of Healthcare and Family Services. (2016, May). Enrollment for Integrated Care Program. Retrieved June 9, 2016 from <http://www.illinois.gov/hfs/MedicalProviders/cc/Pages/ICPErollment.aspx>
- Illinois Department of Healthcare and Family Services. (2016, April 1). Medical Assistance Program Annual Report. Retrieved June 8, 2016 from http://www.illinois.gov/hfs/SiteCollectionDocuments/FY2015_Annual_Report_3-31-16_final.pdf
- Illinois Department of Healthcare and Family Services. (2016, April 1). Illinois Health Connect Program Overview. Retrieved June 13, 2016 from http://www.illinois.gov/hfs/SiteCollectionDocuments/FY2015_Annual_Report_3-31-16_final.pdf
- Illinois Department of Healthcare and Family Services. (2016, April 1). Total Care Coordination Enrollment for All Programs. Retrieved June 13, 2016 from <http://www.illinois.gov/hfs/MedicalProviders/cc/Pages/TotalCCErollmentforAllPrograms.aspx>

16. Enrollment By Eligibility Group

- Illinois Department of Healthcare and Family Services. (2012, February 14). State Plan Amendment 11-007. Retrieved June 9, 2016 from <https://www.medicaid.gov/State-resource-center/Medicaid-State-Plan-Amendments/Downloads/IL/IL-11-07.pdf>
- Illinois Department of Healthcare and Family Services. (2013, December 13). State Plan Amendment 13-015. Retrieved June 9, 2016 from <https://www.medicaid.gov/State-resource-center/Medicaid-State-Plan-Amendments/Downloads/IL/IL-13-015-MSPA.pdf>

17. Fee-For-Service (FFS) Program: Program Overview

- Illinois Department of Healthcare and Family Services. (2016, April 1). Medical Assistance Program Annual Report. Retrieved June 8, 2016 from http://www.illinois.gov/hfs/SiteCollectionDocuments/FY2015_Annual_Report_3-31-16_final.pdf
- Illinois Department of Healthcare and Family Services. (2016, April 1). Illinois Health Connect Program Overview. Retrieved June 13, 2016 from http://www.illinois.gov/hfs/SiteCollectionDocuments/FY2015_Annual_Report_3-31-16_final.pdf
- Illinois Department of Healthcare and Family Services. (2016, April 1). Total Care Coordination Enrollment for All Programs. Retrieved June 13, 2016 from <http://www.illinois.gov/hfs/MedicalProviders/cc/Pages/TotalCCErollmentforAllPrograms.aspx>

Sources

(Page 6 Of 9)

C. Medicaid Financing & Service Delivery System (Continued)

18. Fee-For-Service (FFS) Program: Behavioral Health Benefits

- Illinois General Assembly. Title 59, Part 132 Medicaid Community Mental Health Services Program. Retrieved June 16, 2016 from <http://www.ilga.gov/commission/jcar/admincode/059/05900132sections.html>
- Illinois Department of Human Services. (2016). Division of Alcoholism and Substance Abuse Policy Manual. Retrieved June 21, 2016 from http://www.dhs.state.il.us/OneNetLibrary/27896/documents/By_Division/OASA/2016/DASA_Policy_Manual_for_Participants_Covered_Under_the_Department_of_Healthcare_and_Family_Services_Medical_Programs_FY_2016.pdf

19. Fee-For-Service (FFS) Program: Serious Mental Illness (SMI) Population

- Illinois Department of Healthcare and Family Services. (2012, February 14). State Plan Amendment 11-007. Retrieved June 9, 2016 from <https://www.medicaid.gov/State-resource-center/Medicaid-State-Plan-Amendments/Downloads/IL/IL-11-07.pdf>
- Illinois Department of Healthcare and Family Services. (2016, April 1). Annual Report. Retrieved June 6, 2016 from http://www.illinois.gov/hfs/SiteCollectionDocuments/FY2015_Annual_Report_3-31-16_final.pdf

20. Managed Care Program: Program Overview

- Illinois Department of Healthcare and Family Services. (2016, February 1). Care Coordination Map. Retrieved June 9, 2016 from <https://www.illinois.gov/hfs/SiteCollectionDocuments/CCExpansionMap.pdf>
- Illinois Department of Healthcare and Family Services. (2016). Number of Clients Enrolled by County. Retrieved June 13, 2016 from <http://www.illinois.gov/hfs/info/factsfigures/Program%20Enrollment/Pages/countieslist.aspx>

Sources

(Page 7 Of 9)

C. Medicaid Financing & Service Delivery System (Continued)

21. Managed Care Program: Regional Overview

- Illinois Department of Healthcare and Family Services. (2016, February 1). Care Coordination Map. Retrieved June 9, 2016 from <https://www.illinois.gov/hfs/SiteCollectionDocuments/CCExpansionMap.pdf>
- Illinois Department of Healthcare and Family Services. (2016). Number of Clients Enrolled by County. Retrieved June 13, 2016 from <http://www.illinois.gov/hfs/info/factsfigures/Program%20Enrollment/Pages/countieslist.aspx>

22. Managed Care Program: Behavioral Health Benefits

- Illinois General Assembly. Title 59, Part 132 Medicaid Community Mental Health Services Program. Retrieved June 16, 2016 from <http://www.ilga.gov/commission/jcar/admincode/059/05900132sections.html>
- Illinois Department of Human Services. (2016). Division of Alcoholism and Substance Abuse Policy Manual. Retrieved June 21, 2016 from http://www.dhs.state.il.us/OneNetLibrary/27896/documents/By_Division/OASA/2016/DASA_Policy_Manual_for_Participants_Covered_Under_the_Department_of_Healthcare_and_Family_Services_Medical_Programs_FY_2016.pdf

23. Managed Care Program: Serious Mental Illness (SMI) Population

- Illinois Department of Healthcare and Family Services. (2012, February 14). State Plan Amendment 11-007. Retrieved June 9, 2016 from <https://www.medicaid.gov/State-resource-center/Medicaid-State-Plan-Amendments/Downloads/IL/IL-11-07.pdf>
- Illinois Department of Healthcare and Family Services. (2016, April 1). Annual Report. Retrieved June 6, 2016 from http://www.illinois.gov/hfs/SiteCollectionDocuments/FY2015_Annual_Report_3-31-16_final.pdf

Sources

(Page 8 Of 9)

C. Medicaid Financing & Service Delivery System (Continued)

24. Care Coordination Initiatives

- Centers for Medicare and Medicaid Services. (2015, December). Approved Medicaid Health Home State Plan Amendments. Retrieved May 9, 2016 from https://www.medicaid.gov/state-resource-center/medicaid-state-technical-assistance/health-homes-technical-assistance/downloads/hh-map_v51.pdf
- Henry J. Kaiser Family Foundation. (2015, October). Medicaid Reforms to Expand Coverage, Control Costs, and Improve Care. Retrieved May 9, 2016 from <http://files.kff.org/attachment/report-medicaid-reforms-to-expand-coverage-control-costs-and-improve-care-results-from-a-50-state-medicaid-budget-survey-for-state-fiscal-years-2015-and-2016>
- Illinois Department of Healthcare and Family Services. (2014, February 10). The Path to Transformation: Illinois 1115 Waiver Proposal. Retrieved June 15, 2016 from <https://www.illinois.gov/hfs/SiteCollectionDocuments/020714draftwaiver.pdf>

25. Care Coordination Initiatives: Accountable Care Entities (ACE) & Care Coordination Entities (CCE)

- Illinois Department of Healthcare and Family Services. (2016, January 4). Care Coordination Health Plan Transitions for Medicaid Participants in ACEs and CCEs. Retrieved June 14, 2016 from <https://www.illinois.gov/hfs/MedicalProviders/notices/Pages/prn160104a.aspx>
- Illinois Department of Healthcare and Family Services. Accountable Care Entity (ACEs) and Care Coordination Entities (CCEs). Retrieved June 14, 2016 from <https://www.illinois.gov/hfs/MedicalProviders/notices/Pages/prn160104a.aspx>

26. Program Waivers Impacting The Serious Mental Illness (SMI) Population

- Centers for Medicare and Medicaid Services. Demonstrations and Waivers. Retrieved June 15, 2016 from https://www.medicaid.gov/medicaid-chip-program-information/by-topics/waivers/waivers_faceted.html

Sources

(Page 9 Of 9)

D. Behavioral Health Administration & Finance System

27. Department Of Human Services (DHS) Organizational Chart

- Illinois Department of Human Services. Organization. Retrieved June 8, 2016 from <http://www.dhs.state.il.us/page.aspx?item=31251>

28. Department Of Human Services (DHS) Key Leadership

- Illinois Department of Human Services. Organization. Retrieved June 8, 2016 from <http://www.dhs.state.il.us/page.aspx?item=31251>

29. State Psychiatric Institutions

- Illinois Health Facilities and Services Review Board. (2014, April 4). Long-Term Care Profile 2013, DHS Facilities. Retrieved June 8, 2016 from <http://www.illinois.gov/sites/hfsrb/InventoriesData/FacilityProfiles/Documents/2013%20DHS%20Facility%20Profiles.pdf>
- Illinois Department of Human Services. (2015, November). FY 2015 Office of the Inspector General Annual Report. Retrieved June 8, 2016 from <http://www.dhs.state.il.us/page.aspx?item=85215>

30. Accountable Care Organizations (ACOs)

- OPEN MINDS Database.