



# The PsychU Guide To The New Jersey Mental Health System

This resource is provided for informational purposes only and is not intended as reimbursement or legal advice.

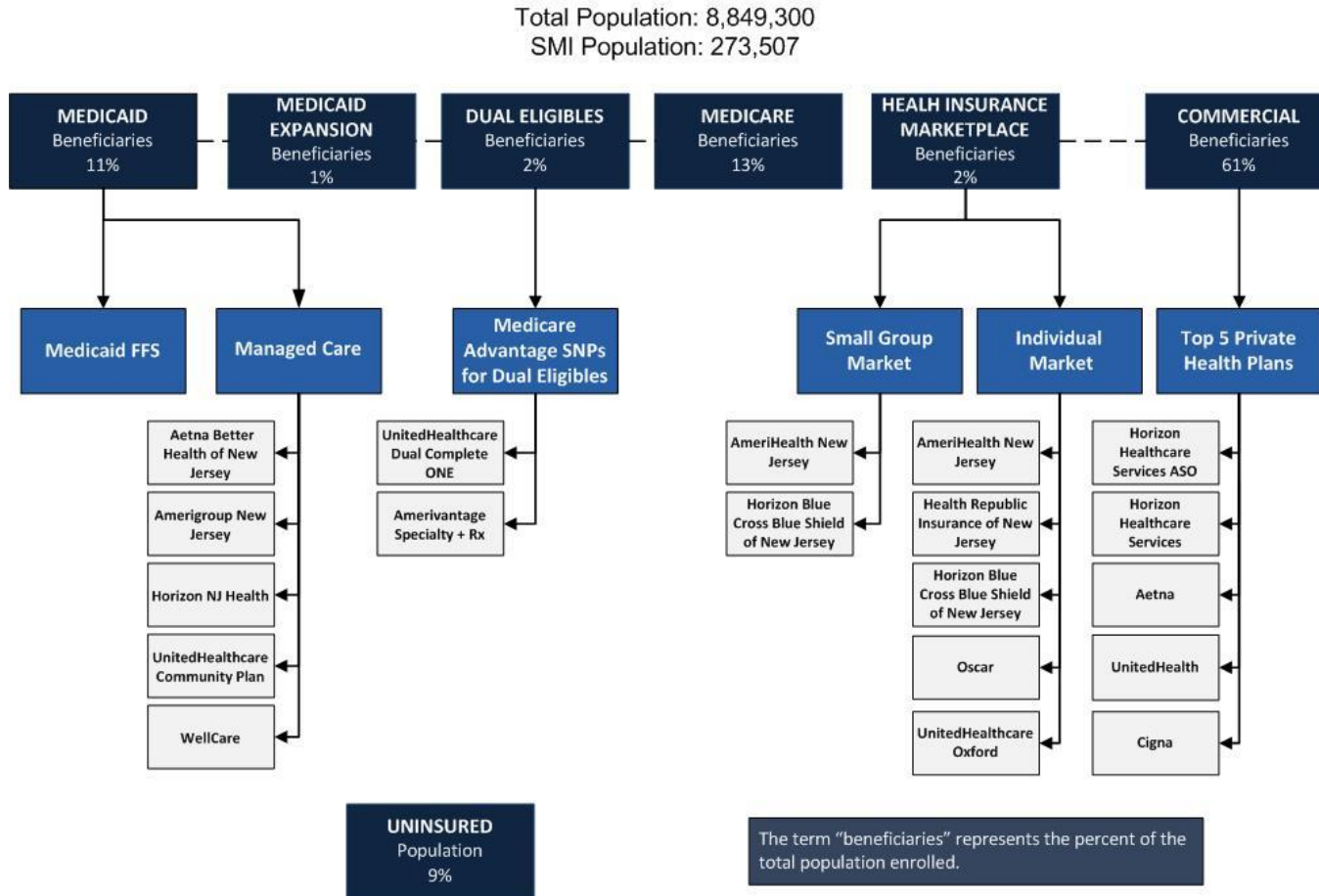
You should seek independent, qualified professional advice to ensure that your organization is in compliance with the complex legal and regulatory requirements governing health care services, and that treatment decisions are made consistent with the applicable standards of care.

Except as otherwise indicated, the information provided is accurate to the best of Otsuka's knowledge as of July 2015.

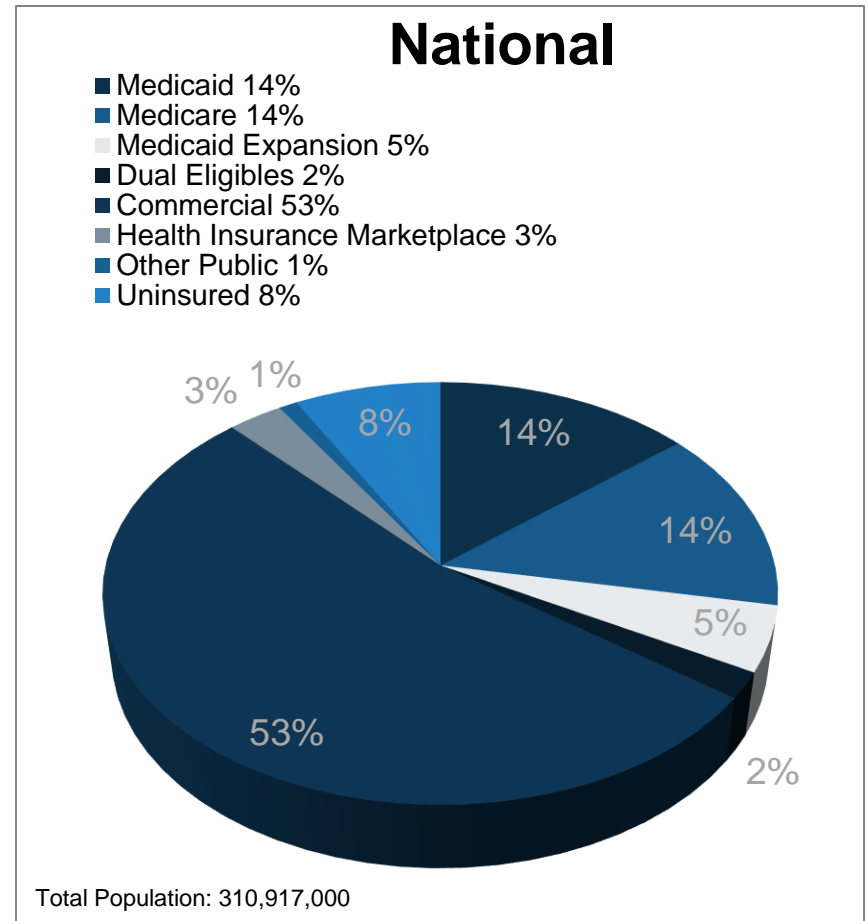
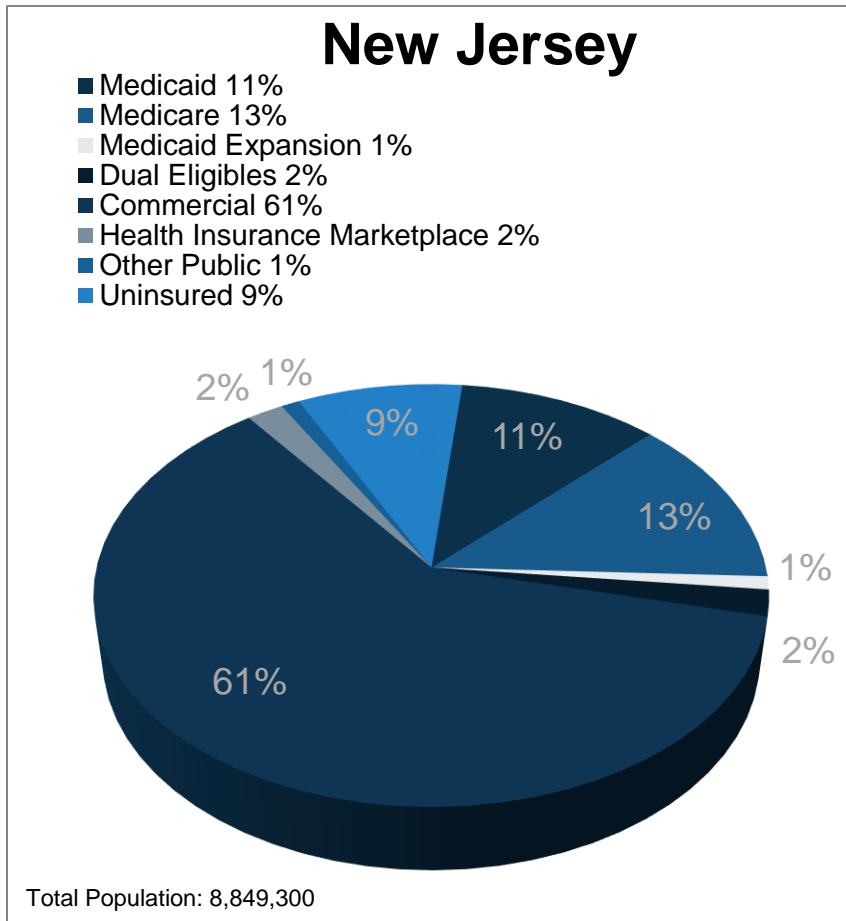
# The PsychU Guide To Mental Health Payers In New Jersey - Contents

1. Health Care Coverage Map Of New Jersey
2. Population Distribution By Payer: National vs. State
3. Largest Health Plans In New Jersey By Enrollment
4. Largest Health Plans in New Jersey By SMI Enrollment
5. New Jersey Medicaid System Overview
6. New Jersey Medicaid Governance
7. New Jersey Medicaid System Benefits
8. New Jersey Medicaid Financing & Service Delivery
9. New Jersey Medicaid Fee-For-Service
10. New Jersey Medicaid Managed Care
11. New Jersey Medicaid Medical & Health Home Initiatives
12. New Jersey State Mental Health & Addiction Treatment Department Governance
13. New Jersey State Psychiatric Institutions
14. New Jersey Accountable Care Organizations (ACOs)
15. New Jersey Health Care Reform Initiatives
16. New Jersey Health Insurance Marketplace Plans
17. New Jersey Essential Health Benefit Benchmark Plan

# 1. Health Care Coverage Map Of New Jersey



# 2. Population Distribution By Payer: National vs. State



Based on 2013 data

# 3. Largest Health Plans In New Jersey By Enrollment

Plan Name	Plan Type	Enrollment*
Horizon Healthcare Services	Commercial Administrative Services Organization (ASO)	1,863,000
Medicare Fee-For-Service (FFS)	Medicare	1,082,587
Horizon Healthcare Services, Inc.	Commercial	959,243
Horizon Healthcare of New Jersey, Inc.	Medicaid	805,704
Aetna	Commercial ASO	704,996
UnitedHealth	Commercial ASO	680,860
AmeriChoice	Medicaid	489,479
Cigna	Commercial ASO	386,082
QualCare	Commercial ASO	244,000
AmeriGroup	Medicaid	212,097

\*Based on enrollment as of fourth quarter 2014

# 4. Largest Health Plans In New Jersey By SMI Enrollment

Plan Name	Plan Type	Enrollment*	Estimated SMI Enrollment
Medicare FFS	Medicare	1,082,587	94,185
Horizon Healthcare of New Jersey, Inc.	Medicaid	805,704	40,285
AmeriChoice	Medicaid	489,479	24,474
Horizon Health Care Services	Commercial ASO	1,863,000	13,041
AmeriGroup	Medicaid	212,097	10,605
UnitedHealthcare	Medicare	109,111	9,493
Medicaid FFS	Medicaid	138,099	6,905
Horizon Healthcare Services, Inc.	Commercial	959,243	6,715
Oxford Health Plans New Jersey, Inc.	Medicare	75,914	6,605
Aetna	Commercial ASO	704,996	4,935

\*Based on enrollment as of fourth quarter 2014

# 5. New Jersey Medicaid System Overview

## Medicaid System Governance

State Medicaid Director	Valerie J. Harr
State Medicaid Director reports to	Elizabeth Connolly, Acting Commissioner, Department of Human Services

## Medicaid Financial Delivery System

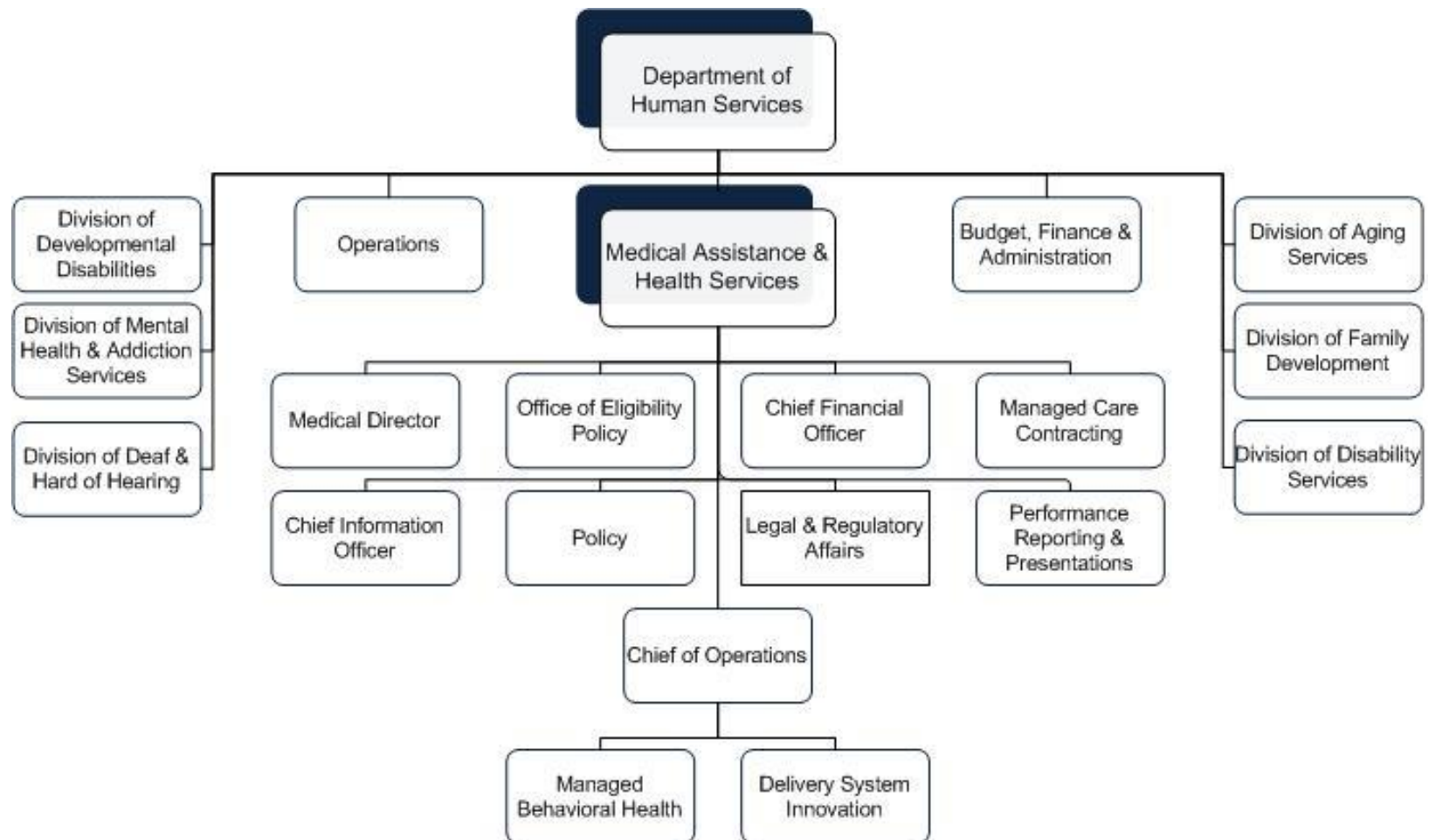
State participating in Medicaid expansion?	Yes
Is managed care mandatory for populations with SMI?	Yes
Is managed care mandatory for dual eligibles?	Yes
Total Medicaid population distribution	9% in FFS 91% in Managed Care
Medicaid beneficiaries with SMI: Primary service system	Because the SMI population must enroll in managed care unless they meet one of the FFS qualifications, the majority of the SMI population is served by managed care.

## Medicaid Financing & Risk Arrangements: Behavioral Health

Traditional Behavioral Health Services	Services provided by a physician are included in the MCO's capitation rate. All other behavioral health services are covered FFS by the state and managed by the state's ASO.
Specialty Behavioral Health Services	Services are covered FFS by the state and managed by the state's ASO.
Pharmaceuticals	All prescribed drugs, including mental health drugs are included in the MCO's capitation rate.



# 6. New Jersey Medicaid Governance: Organization Chart



## 6. New Jersey Medicaid Governance

Name	Position	Department
Elizabeth Connolly	Acting Commissioner	Department of Human Services
Valerie J. Harr	Director	Division of Medical Assistance and Health Services

# 7. New Jersey Medicaid System Benefits

## Federally Mandated Services

1. Inpatient hospital services other than services in an institution for mental disease
2. Outpatient hospital services
3. Rural Health Clinic services
4. Federally Qualified Health Center services
5. Laboratory and X-ray services
6. Nursing facilities for individuals 21 and over
7. Early and Periodic Screening and Diagnosis and Treatment (EPSDT)
8. Family planning services and supplies for individuals of child-bearing age
9. Physician services
10. Medical and surgical services of a dentist
11. Home health services
12. Nurse midwife services
13. Nurse practitioner services
14. Pregnancy services, including tobacco cessation programs
15. Free standing birth centers
16. Non-emergency transportation to medical care

## New Jersey's Optional Services

1. Podiatrists' services
2. Optometrists' services
3. Chiropractors' services
4. Clinic services
5. Dental services
6. Physical, occupational, and speech, hearing, and language disorder therapy
7. Prescribed drugs
8. Dentures, prosthetic devices, and eyeglasses
9. Diagnostic, screening, preventative, and rehabilitative services
10. Services for individuals age 65 or older in an institution for mental disease
11. Intermediate care facility
12. Hospice care
13. Case management services
14. Nursing facility services for individuals under age 21
15. Care and services in a religious non-medical institution
16. Personal care services

# 8. New Jersey Medicaid Financing & Service Delivery

Medicaid System Characteristics		
Characteristics	Medicaid Fee-For-Service (FFS)	Medicaid Managed Care (MC)
Enrollment	138,099	1,566,898
SMI Enrollment	Because the SMI population must enroll in managed care unless they meet one of the FFS qualifications, the majority of the SMI population is served by managed care.	
Management	Department of Medical Assistance and Health Services	<ul style="list-style-type: none"> <li>Physical Health: Five MCOs</li> <li>Behavioral Health: Administrative Services Organization</li> </ul>
Payment Model	Fee-for-service	<ul style="list-style-type: none"> <li>Physical Health: Capitated rate</li> <li>Behavioral Health: Fixed rate and FFS for services</li> </ul>
Geographic Service Area	Statewide	<ul style="list-style-type: none"> <li>Physical Health: Managed care is statewide, MCOs available by county</li> <li>Behavioral Health: Statewide</li> </ul>

**Total Medicaid 1,705,088 | Total Medicaid With SMI 85,254**

# 9. New Jersey Medicaid FFS Program: Overview

Fee-for-service enrollment as of March 2015 was 138,099.

## Mandatory Enrollment In FFS (excluded from managed care)

1. Limited benefit dual eligible
2. Individuals residing in a nursing facility for custodial care
3. Individuals residing in a special care nursing facility\*
4. Individuals in an intermediate care facility for the developmentally disabled
5. Individuals residing in an inpatient psychiatric institution
6. Individuals in the medically needy category

## Optional Enrollment In FFS

1. Indians who are members of federally recognized tribes

# 9. New Jersey Medicaid FFS Program: Behavioral Health Overview

---

## **FFS Behavioral Health Benefits:**

1. Assessment and treatment
2. Medication Assisted Treatment/methadone maintenance
3. Inpatient psychiatric
4. Hospital based detoxification
5. Psychological and neuropsychological testing
6. Electroconvulsive therapy
7. Psychologists' services
8. Partial care
9. Program of assertive community treatment (PACT)
10. Community mental health rehabilitation services
11. Psychiatric emergency rehabilitation services
12. Community support services
13. Substance abuse services

# 9. New Jersey Medicaid FFS Program: SMI Population

---

Individuals with SMI are mandatorily enrolled in managed care, and therefore the majority of the SMI population is served by managed care.



# 10. New Jersey Medicaid Managed Care

---

- Managed care enrollment as of March 2015 was 1,566,898.
- New Jersey's managed care program provides physical health and managed long-term services and supports through five MCOs:
  - Aetna Better Health of New Jersey
  - Amerigroup New Jersey
  - Horizon NJ Health
  - UnitedHealthcare Community Plan
  - WellCare
- MCOs are available on a county by county basis. Individuals have a choice of MCOs available in their county.



# 10. New Jersey Medicaid Managed Care: Behavioral Health Overview

1. New Jersey MCOs are not responsible for providing behavioral health services except for services provided by a primary care physician. Services are reimbursed on a FFS basis by the state.
  - The MCO is responsible for providing behavioral health services to adults with I/DD and adults receiving LTSS.
2. Behavioral health services for adults are managed by an interim Administrative Services Organization (ASO), Rutgers University Behavioral Health Care (UBHC).
  - Although New Jersey is effectively utilizing an ASO to provide behavioral health services for the adults, the state refers to Rutgers in its documents as the interim managing entity (IME).
3. Rutgers UBHC began managing services on July 1, 2015. Services are being phased in:
  - Phase One: Provides prior authorization and limited utilization management for FFS addiction treatment services
  - Phase Two: Beginning January 1, 2016, community support services and ambulatory services will be managed by Rutgers. More details on the specifics of phase two will be released in fall 2015.
4. Rutgers UBHC contract will run through June 30, 2017. Originally, New Jersey planned to contract with an ASO to managed adult behavioral health services. However, the state is currently exploring other options for the behavioral health delivery system after its contract ends including:
  - Contracting with a managed behavioral health organization
  - Including behavioral health services in the current MCO's contracts
5. Children's behavioral health services are covered FFS and managed by a separate ASO. At this time children's behavioral health services will remain in the ASO and will not be affected by changes to the adult system.

# 10. New Jersey Medicaid Managed Care: Behavioral Health Benefits

---

1. Assessment and treatment
2. Medication Assisted Treatment/methadone maintenance
3. Inpatient psychiatric
4. Hospital based detoxification\*
5. Psychological and neuropsychological testing
6. Electroconvulsive therapy
7. Psychologists' services
8. Partial care
9. Program of assertive community treatment (PACT)
10. Community mental health rehabilitation services
11. Psychiatric emergency rehabilitation services
12. Community support services
13. Substance abuse services

\*Detoxification in a medical bed for acute withdrawal, seizures, Delirium Tremens or medical instability when ordered by a MCO authorized provider is covered by the MCO.

# 10. New Jersey Medicaid Managed Care: SMI Population

- Individuals with SMI are not exempt from enrolling in managed care unless they also meet one of the fee-for-service criteria.
- Medicaid expansion population, if medically frail, must be offered the full array of State Plan benefits. Medically frail individuals include adults with serious mental illness and chronic substance abuse disorders.
- In July 2014, New Jersey implemented health homes for individuals with SMI in Bergen and Morris counties.



# 11. New Jersey Medicaid Medical & Health Home Initiatives

---

- New Jersey has two health home state plan amendments (SPA) that were approved in July 2014:
  - The first SPA provides health home services to children with serious emotional disturbance through a special delivery system.
  - The second SPA provides health home services to adults with SMI.
- Medicaid MCOs are required to operate a medical home pilot project and report on the results.



# 11. New Jersey Medicaid Medical & Health Home Initiatives

Health Homes for Adults	
<b>Target Population</b>	<ul style="list-style-type: none"> <li>Adults with SMI in Bergen or Mercer County</li> <li>Individuals must choose between receiving PACT, targeted case management, 1915(c) services or health home services</li> </ul>
<b>Care Delivery Model</b>	<ul style="list-style-type: none"> <li>Any mental health provider may provide health home services</li> <li>Delivery of the six core health home functions</li> <li>Within three years of becoming a health home, an organization must co-locate primary care services in their office</li> </ul>
<b>Geographic Service Area</b>	<ul style="list-style-type: none"> <li>Bergen and Mercer counties</li> <li>Planning to expand health homes to Atlantic, Cape May, and Monmouth counties in January 2016</li> </ul>
<b>Enrollment Model</b>	Eligible participants must opt-in to receive services
<b>Payment Model</b>	<ul style="list-style-type: none"> <li>Health home providers contract directly with the state</li> <li>Services are reimbursed using per member per month rate. Rates are established by the phase of the program the enrollee is currently engaged in:               <ul style="list-style-type: none"> <li>Engagement- \$15.00</li> <li>Active- \$480.00</li> <li>Maintenance- \$120.00</li> </ul> </li> </ul>
<b>Practice Performance &amp; Improvement</b>	<ul style="list-style-type: none"> <li>Health home providers must achieve health home accreditation from a national organization by year two of participation in the program</li> <li>Creation of a Behavioral Health Home Learning Community</li> <li>Quality measures and cost-saving analysis</li> </ul>

## 12. New Jersey State Mental Health & Addiction Treatment Department Governance

Name	Position	Department
Elizabeth Connolly	Acting Commissioner	Department of Human Services
Valerie L. Mielke, MSW	Assistant Commissioner	Division of Mental Health and Addiction Services

# 13. New Jersey State Psychiatric Institutions

Institution Name	Location	Beds	FY 2015 Admissions	FY 2015 Discharges	FY 2015 Average Daily Census
Ancora Psychiatric Hospital	Hammonton	600	737	763	443
Trenton Psychiatric Hospital	West Trenton	400	708	724	433
Ann Klein Forensic Center	West Trenton	200	207	207	200
Greystone Park Psychiatric Hospital	Morris Plains	450	569	575	545
<b>Total</b>		<b>1,650</b>	<b>2,221</b>	<b>2,269</b>	<b>1,622</b>

# 14. New Jersey Accountable Care Organizations (ACOs)

## Medicare Shared Savings Program

1. ACO Health Partners
2. Accountable Care, dba, Orange Accountable Care
3. Allegiance ACO
4. Atlantic ACO (AHS)
5. AtlantiCare Health Solutions, Inc.
6. Balance ACO
7. Barnabas Health ACO-North, LLC
8. Capital Health Accountable Care Organization, LLC
9. Central Jersey ACO, LLC
10. Chrysalis Medical Services, LLC
11. Delaware Valley ACO
12. Hackensack Physician-Hospital Alliance ACO, LLC
13. HNMCM Hospital/Physician ACO, LLC
14. Inspira Care Connect, LLC
15. JFK Population Health Company, LLC
16. LHS Health Network, LLC
17. Meridian Accountable Care Organization, LLC
18. NEPA ACO Company, LLC
19. New York Quality Care
20. NJ Physicians ACO
21. Optimus Healthcare Partners, LLC
22. Partners In Care ACO, Inc.
23. Partners In Care ACO, Inc. (Medicare Advantage)
24. Quality Health Alliance-ACO, LLC
25. RWJ Partners ,LLC
26. Total Care ACO, LLC, dba, Orange Accountable Care of New York
27. VirtuaCare



# 14. New Jersey Accountable Care Organizations (ACOs)

## Commercial ACOs

ACO	Commercial Insurer
Atlantic ACO	Aetna
Atlantic ACO (AHS)	Physician operated
Atlanticare Health Solutions	Physician operated
Delaware Valley ACO	Physician operated
Delaware Valley ACO	Physician operated
Delaware Valley ACO	Employee operated
Barnabas Health	Horizon Blue Cross Blue Shield
Hackensack Physician-Hospital Alliance ACO, LLC	Physician operated
Hackensack Physician-Hospital Alliance ACO, LLC	Physician operated
Hackensack Alliance ACO	Aetna
Hunterdon HealthCare Partners	Aetna
Hunterdon Healthcare Partners	Cigna
Hunterdon Healthcare Partners	Horizon Blue Cross Blue Shield of New Jersey
LHS Health Network	Aetna
LHS Health Network ACO	Horizon Blue Cross Blue Shield of New Jersey
Optimus HealthCare Partners	Aetna
Optimus HealthCare Partners	Horizon Blue Cross Blue Shield of New Jersey
Partners In Care ACO, Inc.	Physician operated
Skylands Medical Group CAC	Cigna
Summit Medical Group	Cigna
Virtua Medical Group	Aetna

# 15. New Jersey Health Care Reform Initiatives

Medicaid Expansion		Health Insurance Marketplace	
Choose to participate in expansion?	Yes	Type of Marketplace	Federal
Medicaid Eligibility Income Limit for Childless Adults	133% of FPL Note: The PPACA requires that 5% of income be disregarded with determining eligibility	Individual Enrollment Contact	<a href="http://www.healthcare.gov">www.healthcare.gov</a>
Specific Legislation Enacted	FY 2014 Budget Bill	Small Business Enrollment Contact	<a href="http://www.healthcare.gov/small-businesses">www.healthcare.gov/small-businesses</a>
			1-800-318-2596
			1-800-706-7893

# 16. New Jersey Health Insurance Marketplace Plans

## Individual Market

- AmeriHealth New Jersey
- Health Republic Insurance of New Jersey
- Horizon Blue Cross Blue Shield of New Jersey
- Oscar
- UnitedHealthcare Oxford

## Small Group Market

- AmeriHealth New Jersey
- Horizon Blue Cross Blue Shield of New Jersey

# 17. New Jersey Essential Health Benefit Benchmark Plan

<b>Plan Type</b>	Plan from largest small group product, Health Maintenance Organization
<b>Issuer Name</b>	Horizon HMO
<b>Plan Name</b>	Horizon HMO Access HSA Compatible
<b>Supplemented Categories (Supplementary Plan Type)</b>	<ul style="list-style-type: none"> <li>• Pediatric Oral (State CHIP)</li> <li>• Pediatric Vision (FEDVIP)</li> </ul>
<b>Habilitative Services Defined by Plan</b>	Yes; Habilitation services are subject to the limits applicable to rehabilitation services, other therapies, services and supplies. Habilitations as provided through rehabilitation services are covered.
<b>Biologically Based Mental Illness</b>	Covered the same as any other medical benefit as described in the 2008 Mental Health Parity and Addiction Equity Act

# New Jersey Essential Health Benefit Benchmark Plan: Behavioral Health Benefits

Benefit	Limit on Service	Exclusions (apply to all benefits)
Non-Biologically Based Mental Illness	None	<ul style="list-style-type: none"> <li>• Custodial care</li> <li>• Education and training</li> </ul>
	None	<ul style="list-style-type: none"> <li>• Private accommodations</li> <li>• Custodial care</li> <li>• Education and training</li> </ul>
	None	<ul style="list-style-type: none"> <li>• Custodial care</li> <li>• Education and training</li> </ul>
	None	<ul style="list-style-type: none"> <li>• Private accommodations</li> <li>• Custodial care</li> <li>• Education and training</li> </ul>

# Sources

## 1. New Jersey Health Care Coverage Map

1. The Henry J. Kaiser Foundation. (2014, April 19). State Health Facts: Health Reform Indicators. Retrieved July 23, 2015 from <http://kff.org/state-category/health-reform/>
2. New Jersey Department of Human Services. (2015, March). 1st Quarter 2015 Health Enrollment (JPN). Retrieved July 23, 2015 from <http://www.state.nj.us/doh/lifehealthactuarial/15health1stqtr.pdf>
3. Thierer, C. (2015, January). 2015 QHP Landscape Individual Market Medical. Retrieved July 23, 2015 from <https://data.healthcare.gov/dataset/2015-QHP-Landscape-Individual-Market-Medical/mp8z-jtg7>
4. Thierer, C. (2015, January). 2015 QHP Landscape SHOP Market Medical. Retrieved July 23, 2015 from <https://data.healthcare.gov/dataset/2015-QHP-Landscape-SHOP-Market-Medical/nyb9-erui>

## 2. New Jersey Population Distribution By Payer: National vs. State

1. Centers for Medicare and Medicare Services. (2013, February). Data Analysis Brief Medicare-Medicaid Dual Enrollment from 2006 through 2011. Retrieved July 23, 2015 from [http://www.cms.gov/Medicare-Medicaid-Coordination/Medicare-and-Medicaid-Coordination/Medicare-Medicaid-Coordination-Office/Downloads/Dual\\_Enrollment\\_2006-2011\\_Final\\_Document.pdf](http://www.cms.gov/Medicare-Medicaid-Coordination/Medicare-and-Medicaid-Coordination/Medicare-Medicaid-Coordination-Office/Downloads/Dual_Enrollment_2006-2011_Final_Document.pdf)
2. The Henry J. Kaiser Foundation. (2012). State Health Facts: Health Insurance Coverage of the Total Population. Retrieved July 23, 2015 from <http://kff.org/other/state-indicator/total-population/>
3. The Medicaid and CHIP Payment and Access Commission. (2014, June). MACStats: Medicaid and CHIP Program Statistics. Retrieved July 23, 2015 from <http://www.macpac.gov/reports>
4. The Kaiser Foundation definition for Medicaid includes dual eligible individuals. To avoid double counting, the number of dual eligibles was subtracted from the total number of Medicaid enrollees.
5. Other Public refers to military and Veteran's Administration coverage.

# Sources

## 3. Largest Health Plans In New Jersey By Enrollment

1. Centers for Medicare and Medicaid Services. (2012). Medicare Geographic Variation State/County Table- All Beneficiaries. Retrieved July 23, 2015 from [http://www.cms.gov/Research-Statistics-Data-and-Systems/Statistics-Trends-and-Reports/Medicare-Geographic-Variation/GV\\_PUF.html](http://www.cms.gov/Research-Statistics-Data-and-Systems/Statistics-Trends-and-Reports/Medicare-Geographic-Variation/GV_PUF.html)
2. Health Plans USA. (2013). Subscription Database. Available from <http://www.markfarrah.com/products/health-plans-usa.aspx>
3. New Jersey Department of Human Services. (2015, March). 1st Quarter 2015 Health Enrollment (JPN). Retrieved July 23, 2015 from <http://www.state.nj.us/doh/lifehealthactuarial/15health1stqtr.pdf>
4. New Jersey Department of Human Services. (2015, March). NJ FamilyCare/Medicaid Enrollment Statistics. Retrieved July 23, 2015 from [http://www.nj.gov/humanservices/dmahs/news/reports/enrollment\\_2015\\_3.pdf](http://www.nj.gov/humanservices/dmahs/news/reports/enrollment_2015_3.pdf)

## 4. Largest Health Plans in New Jersey By SMI Enrollment

1. Centers for Medicare and Medicaid Services. (2012). Medicare Geographic Variation State/County Table- All Beneficiaries. Retrieved July 23, 2015 from [http://www.cms.gov/Research-Statistics-Data-and-Systems/Statistics-Trends-and-Reports/Medicare-Geographic-Variation/GV\\_PUF.html](http://www.cms.gov/Research-Statistics-Data-and-Systems/Statistics-Trends-and-Reports/Medicare-Geographic-Variation/GV_PUF.html)
2. Health Plans USA. (2013). Subscription Database. Available from <http://www.markfarrah.com/products/health-plans-usa.aspx>

## 5. New Jersey Medicaid System Overview

1. Information derived from sources found through the profile.

## 6. New Jersey Medicaid Governance

1. New Jersey Department of Human Services. (2014, August 25). NJ-13-0025-MM4. Retrieved July 23, 2015 from <http://www.medicaid.gov/State-resource-center/Medicaid-State-Plan-Amendments/Downloads/NJ/NJ-13-0025-MM4.pdf>

## 7. New Jersey Medicaid System Benefits

1. Centers for Medicare and Medicaid Services. Medicaid Benefits. Retrieved July 1, 2014 from <http://www.medicaid.gov/Medicaid-CHIP-Program-Information/By-Topics/Benefits/Medicaid-Benefits.html>

# Sources

## 8. New Jersey Medicaid Financing & Service Delivery

1. New Jersey Department of Human Services. (2014, November 17). New Jersey Comprehensive Waiver. Retrieved July 23, 2015 from <http://www.medicaid.gov/Medicaid-CHIP-Program-Information/By-Topics/Waivers/1115/downloads/nj/nj-1115-request-ca.pdf>

## 9. New Jersey Medicaid Fee-For-Service

1. New Jersey Department of Human Services. (2015, January). Managed Care Contract. Retrieved July 23, 2015 from <http://www.nj.gov/humanservices/dmahs/info/resources/care/hmo-contract.pdf>
2. New Jersey Department of Human Services. (2015). New Jersey State Plan. Retrieved July 23, 2015 from [http://www.nj.gov/humanservices/dmahs/info/state\\_plan/Attachment3\\_Services\\_including\\_Scope\\_and\\_Limitations.pdf](http://www.nj.gov/humanservices/dmahs/info/state_plan/Attachment3_Services_including_Scope_and_Limitations.pdf)
3. New Jersey Department of Human Services. (2015, January). NJ-14-008. Retrieved July 23, 2015 from <http://www.medicaid.gov/State-resource-center/Medicaid-State-Plan-Amendments/Downloads/NJ/NJ-14-008.pdf>
4. New Jersey Department of Human Services. (2015). New Jersey State Plan. Retrieved July 23, 2015 from [http://www.nj.gov/humanservices/dmahs/info/state\\_plan/Attachment3\\_Services\\_including\\_Scope\\_and\\_Limitations.pdf](http://www.nj.gov/humanservices/dmahs/info/state_plan/Attachment3_Services_including_Scope_and_Limitations.pdf)

## 10. New Jersey Medicaid Managed Care

1. New Jersey Department of Human Services. (2014, November 17). New Jersey Comprehensive Waiver. Retrieved July 23, 2015 from <http://www.medicaid.gov/Medicaid-CHIP-Program-Information/By-Topics/Waivers/1115/downloads/nj/nj-1115-request-ca.pdf>
2. New Jersey Department of Human Services. (2015, January). Managed Care Contract. Retrieved July 23, 2015 from <http://www.nj.gov/humanservices/dmahs/info/resources/care/hmo-contract.pdf>

## 10. New Jersey Medicaid Managed Care Program: Behavioral Health Overview

1. OPEN MINDS Weekly News Wire. (2015, May 31). New Jersey Awards Contract To Manage Medicaid Addiction Treatment To Rutgers; Mental Health Services Slated To Be Added To Initiative. Retrieved July 23, 2015 from <https://www.openminds.com/market-intelligence/news/new-jersey-state-shifts-way-pays-medicaid-mental-health-addiction-treatments-contracts-managed-fee-service.htm/>
2. OPEN MINDS Weekly News Wire. (2015, July 6). New Jersey Medicaid Cancels Behavioral Health ASO Procurement. Retrieved July 23, 2015 from <https://www.openminds.com/market-intelligence/news/new-jersey-medicaid-cancels-behavioral-health-aso-procurement.htm/>



# Sources

---

## 10. Medicaid Managed Care Program: SMI Populations

1. United State Government. (2014, June 23). Federal Register Federal Register §440.315 Exempt individuals. Retrieved July 1, 2014 from <http://www.ecfr.gov/cgi-bin/text-idx?SID=bf8c9a15d9868d4dd8eea9e9198a6a7d&node=42:4.0.1.1.9&rgn=div5>

## 10. New Jersey Medicaid Managed Care Program: New Initiatives

1. New Jersey Department of Human Services. (2015, July). Christie Administration Announces Launch Of Medicaid Accountable Care Organizations. Retrieved July 23, 2015 from <http://www.nj.gov/humanservices/news/press/2015/approved/20150701.html>
2. State of New Jersey. (2011, August). NJ P.L. 2011, Chapter 114. Retrieved July 23, 2015 from [http://www.njleg.state.nj.us/2010/Bills/PL11/114\\_.pdf](http://www.njleg.state.nj.us/2010/Bills/PL11/114_.pdf)

## 11. New Jersey Medicaid Medical & Health Home Initiatives

1. New Jersey Department of Human Services. Health Homes. Retrieved July 23, 2015 from <http://nj.gov/humanservices/dmhas/initiatives/integration/hh.html>
2. New Jersey Department of Human Services. (2015, March 12). NJ-14-0005. Retrieved July 23, 2015 from <http://www.medicaid.gov/State-resource-center/Medicaid-State-Plan-Amendments/Downloads/NJ/NJ-14-0005.pdf>

## 12. New Jersey State Mental Health & Addiction Treatment Department Organization Chart

1. New Jersey Department of the Treasury. (2015, June 26). P.L.2015, CHAPTER 63. Retrieved July 23, 2015 from <http://www.nj.gov/treasury/omb/publications/16veto/pdf/appropact.pdf>

# Sources

---

## 13. New Jersey State Psychiatric Institutions

1. New Jersey Department of Human Services. (2015, June). Monthly Census - Admissions and Discharges. Retrieved July 23, 2015 from [http://www.state.nj.us/humanservices/dmhas/publications/hospital/STATE\\_FY\\_2015.pdf](http://www.state.nj.us/humanservices/dmhas/publications/hospital/STATE_FY_2015.pdf)

## 14. New Jersey Accountable Care Organizations (ACOs)

- OPEN MINDS Database

## 15. New Jersey Health Care Reform Initiatives

1. The Centers for Medicare and Medicaid Services. (2014, October 1). State Medicaid and CHIP Income Eligibility Standards. Retrieved July 23, 2015 from <http://www.medicare.gov/AffordableCareAct/Medicaid-Moving-Forward-2014/Downloads/Medicaid-and-CHIP-Eligibility-Levels-Table.pdf>
2. United States Government. (2014). Healthcare.gov. Retrieved July 23, 2015 from <https://www.healthcare.gov/>

## 16. New Jersey Health Insurance Marketplace Plans

1. Thierer, C. (2015, January). 2015 QHP Landscape Individual Market Medical. Retrieved July 23, 2015 from <https://data.healthcare.gov/dataset/2015-QHP-Landscape-Individual-Market-Medical/mp8z-jtg7>
2. Thierer, C. (2015, January). 2015 QHP Landscape SHOP Market Medical. Retrieved July 23, 2015 from <https://data.healthcare.gov/dataset/2015-QHP-Landscape-SHOP-Market-Medical/nyb9-erui>

## 17. New Jersey Essential Health Benefit Benchmark Plan

1. State of New Jersey. (2014). New Jersey EHB Benchmark Plan. Retrieved July 23, 2015 from <http://www.cms.gov/CCIIO/Resources/Data-Resources/Downloads/Updated-New-Jersey-Benchmark-Summary.pdf>