

The PsychU Guide To The Mississippi Mental Health System

This resource is provided for informational purposes only and is not intended as reimbursement or legal advice.

You should seek independent, qualified professional advice to ensure that your organization is in compliance with the complex legal and regulatory requirements governing health care services, and that treatment decisions are made consistent with the applicable standards of care.

Except as otherwise indicated, the information provided is accurate to the best of Otsuka's knowledge as of September 2017.

Contents

PsychU Guide To The Mississippi Mental Health System

A. Health Care Marketplace Overview

1. Physical Health Care Coverage Map
2. Population Demographics
3. Population Distribution By Payer: United States V. Mississippi
4. Largest Health Plans By Enrollment
5. Largest Health Plans By Estimated SMI Enrollment
6. Health Insurance Marketplace

B. Medicaid System Overview

7. Delivery System, Risk, & Federal Participation
8. Expansion Decision
9. Care Coordination Entities
10. The Uninsured
11. Organizational Chart
12. Key Leadership
13. Program Benefits

C. Medicaid Financing & Service Delivery System

14. Overview
15. Enrollment By Eligibility Group
16. FFS Program: Program Overview
17. FFS Program: Healthier Mississippi
18. FFS Program: BH Benefits
19. FFS Program: SMI Population
20. Managed Care Program: Program Overview
21. Managed Care Program: BH Benefits
22. Managed Care Program: SMI Population
23. Care Coordination Initiatives
24. Program Waivers With Impact On The SMI Population

D. Behavioral Health Administration & Finance System

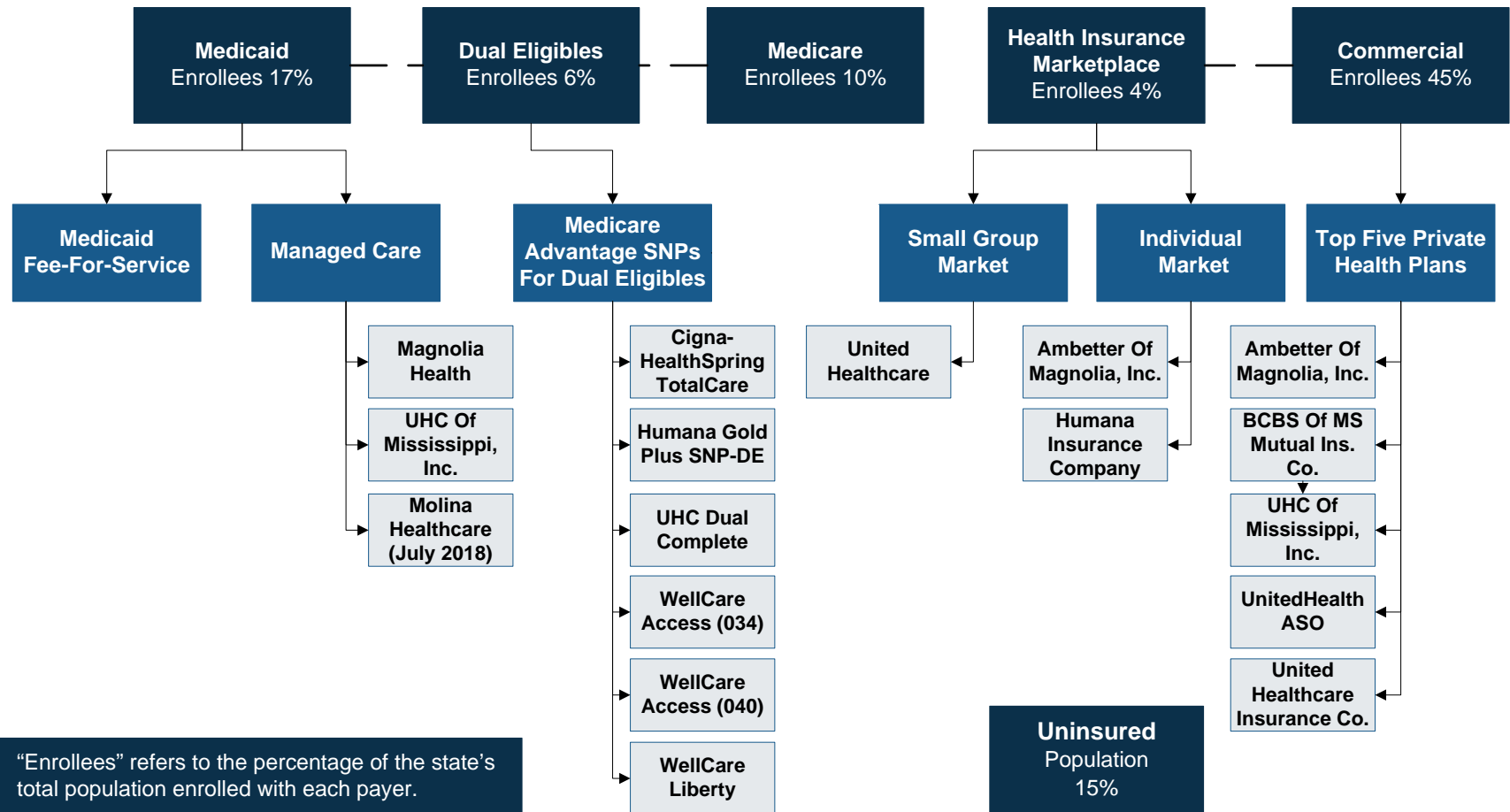
26. DMH Organizational Chart
27. DMH Key Leadership
28. State Psychiatric Institutions
29. Accountable Care Organizations

Appendix A: Sources

BH = Behavioral Health
DMH = Department Of Mental Health
FFS = Fee-For-Service
SMI = Serious Mental Illness

A. MISSISSIPPI HEALTH CARE MARKETPLACE OVERVIEW

1. Physical Health Care Coverage Map

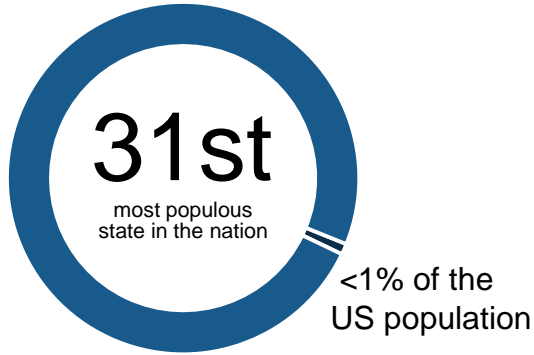


“Enrollees” refers to the percentage of the state’s total population enrolled with each payer.

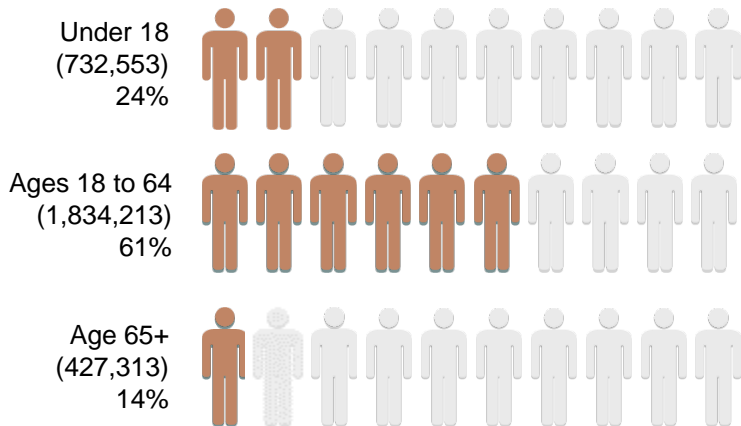
ASO = Administrative Services Only MS = Mississippi
 BCBS = Blue Cross & Blue Shield SNP = Special Needs Plan
 DE = Dual Eligible UHC = UnitedHealthcare

2. Population Demographics

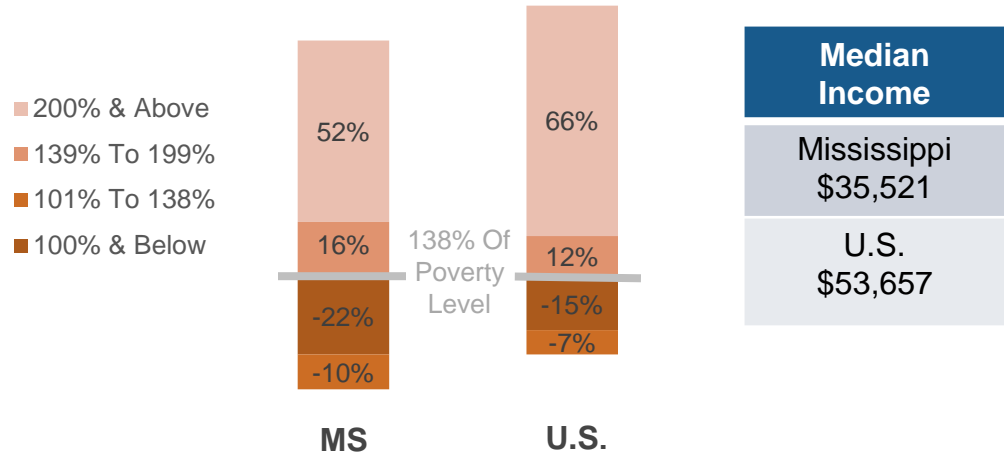
Total Mississippi Population – 2,994,079
 SMI Population – 141,026



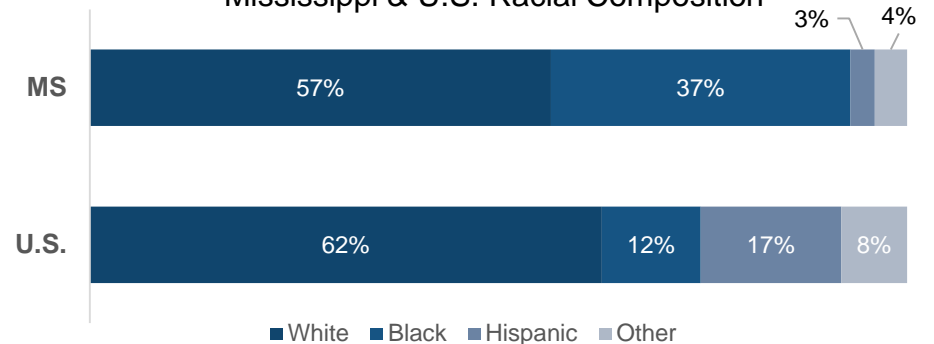
Population Distribution By Age



Population Distribution By Income To Poverty Threshold Ratio

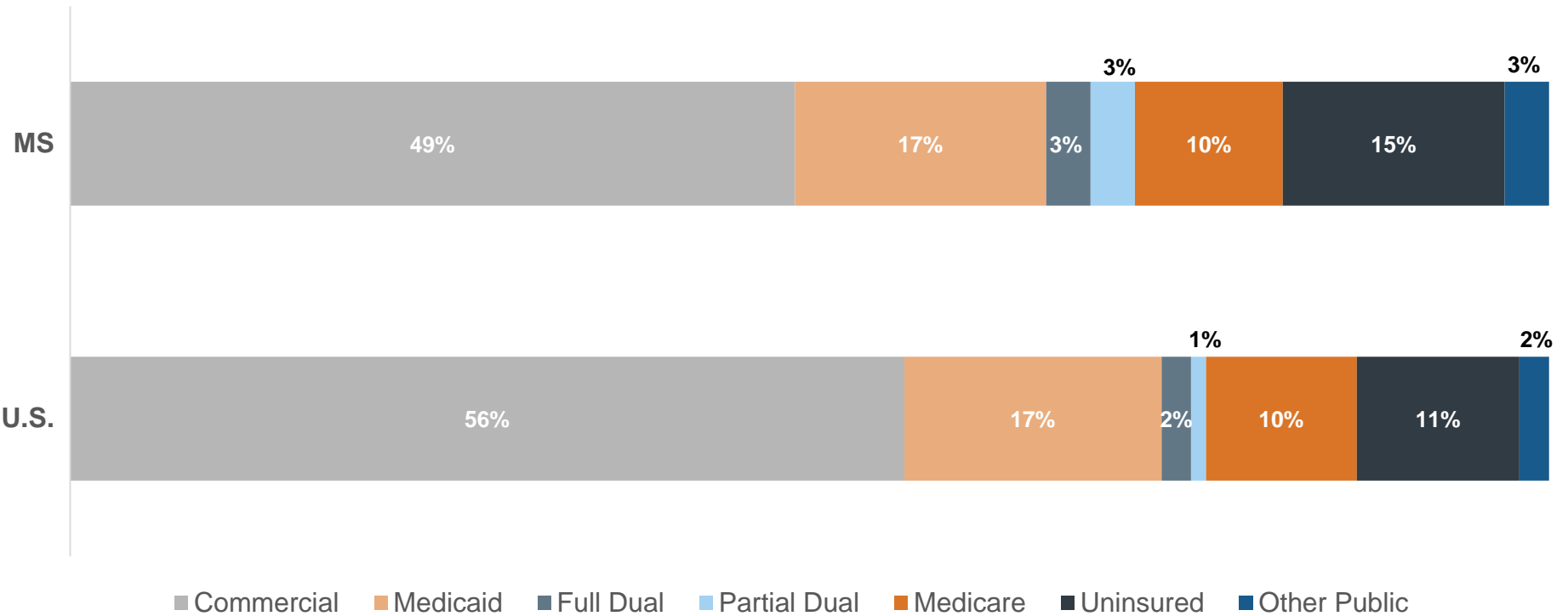


Mississippi & U.S. Racial Composition



SMI = Serious Mental Illness

3. Population Distribution By Payer: United States v. Mississippi



4. Largest Health Plans By Enrollment

Plan Name	Plan Type	Enrollment*
BCBS of Mississippi Mutual Insurance Co.	Commercial	925,754
Medicare FFS	Medicare	463,110
Medicaid FFS	Medicaid	270,965
Magnolia Health	Medicaid Managed Care	251,932
UnitedHealthcare of Mississippi, Inc.	Medicaid Managed Care	237,379
TRICARE	Other Public	109,514
UnitedHealthcare	Commercial ASO	97,971
UnitedHealthcare of Mississippi, Inc.	Commercial	47,700
UnitedHealthcare Insurance Co.	Commercial	33,929
Ambetter of Magnolia, Inc.	Commercial	28,427

*Medicaid & Medicare enrollment as of April 2017; TRICARE as of February 2017; Commercial as of 4th quarter 2016

ASO = Administrative Services Only
BCBS = Blue Cross & Blue Shield
FFS = Fee For Service

5. Largest Health Plans By Estimated Serious Mental Illness (SMI) Enrollment

Plan Name	Plan Type	Enrollment*	Estimated SMI Enrollment
Medicare FFS	Medicare	463,110	66,225
Medicaid FFS	Medicaid	270,965	27,234
BCBS of Mississippi Mutual Insurance Co.	Commercial	925,754	21,940
TRICARE	Other Public	109,514	6,133
Magnolia Health	Medicaid Managed Care	251,932	5,648
UnitedHealthcare of Mississippi, Inc.	Medicaid Managed Care	237,379	5,152
Humana Insurance Company	Medicare	28,406	4,062
Harmony Health Plan, Inc.	Medicare	24,057	3,440
Humana Medical Plan, Inc.	Medicare	16,913	2,419
UnitedHealthcare	Commercial ASO	97,971	2,322

*Medicaid & Medicare as of April 2017; TRICARE as of February 2017; Commercial as of 4th quarter 2016

ASO = Administrative Services Only
BCBS = Blue Cross & Blue Shield
FFS = Fee-For-Service

6. Health Insurance Marketplace

Health Insurance Marketplace	
Type Of Marketplace	Federal
Individual Enrollment Contact	www.healthcare.gov
	1-800-318-2596
Small Business Enrollment Contact	https://www.onemississippi.com/
	1-855-967-7467

2017 Individual Market Health Plans

- Ambetter Of Magnolia, Inc.
- Humana Insurance Company

2017 Small Group Market Plans

- UnitedHealthcare

B. MISSISSIPPI MEDICAID SYSTEM OVERVIEW

7. Delivery System, Risk, & Federal Participation

Medicaid Financial Delivery System

Is Managed Care Mandatory For Populations With SMI?

Yes

Is Managed Care Mandatory For Dual Eligibles?

No

Total Medicaid Population Distribution

- 38% in FFS
- 62% in managed care

Medicaid Beneficiaries With SMI:
Primary Service System

Because dual eligibles, who are excluded from managed care, make up the majority of the SMI population, most individuals with SMI are enrolled in the FFS program

Medicaid Financing & Risk Arrangements: Behavioral Health

Traditional Behavioral Health Services

Specialty Behavioral Health Services

Pharmaceuticals

- FFS Population: Covered FFS by the state
- Managed Care Population: Included in MCO's capitation rate

FFS = Fee-For-Service
MCO = Managed Care Organization
SMI = Serious Mental Illness

8. Expansion Decision

State Medicaid Expansion Decision	
Participating In Expansion?	No
Date Of Expansion	Not applicable
Medicaid Eligibility Income Limit For Able-Bodied Adults	<ul style="list-style-type: none"> 23% of the FPL for parents and caretaker relatives; 0% for childless adults
Legislation Used To Expand Medicaid	None

FPL = Federal Poverty Level

9. Care Coordination Entities

Medicaid Care Coordination Entities For Chronic Care Populations (Including SMI)

Managed Care Plan	✓	Mississippi calls its managed care plans Coordinated Care Organizations
Accountable Care Organization (ACO) Program		None
Health Home		None
Medical Home		None
Primary Care Case Management (PCCM) Model		None

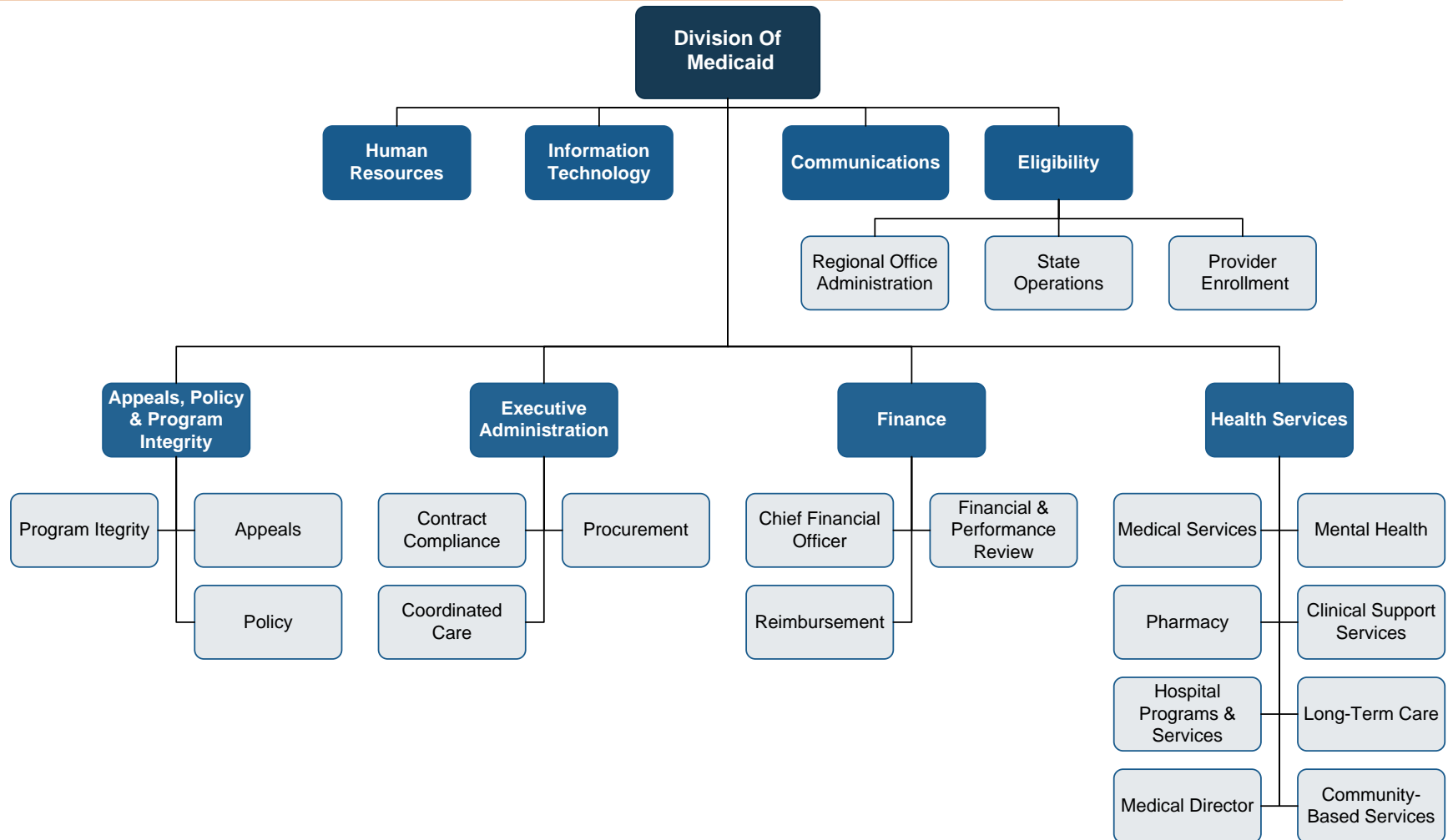
SMI = Serious Mental Illness

10. The Uninsured

State Agency Responsible For Uninsured Citizens & Delivery System Model

Physical Health Services	The Primary Care Office located in the Office Of Rural Health & Primary Care within the Mississippi Department Of Health is responsible for providing physical health services to the uninsured population
Mental Health Services	The Department Of Mental Health (DMH) provides mental health services to the uninsured population through 14 regional community mental health centers (CMHCs)
Addiction Treatment Services	The DMH Bureau Of Alcohol & Drug Services provides addiction treatment services to the uninsured population through a network of state-operated facilities, CMHCs, and other not-for-profit community-based programs

11. Organizational Chart



12. Key Leadership

Name	Position	Department
David J. Dzielak	Executive Director	Division Of Medicaid
Dorothy Young	Deputy Administrator For Health Services	Division Of Medicaid
Tami Brooks, MD	Medical Director	Division Of Medicaid
Terri Kirby	Pharmacy Director	Division Of Medicaid

13. Program Benefits

Federally Mandated Services

- Inpatient hospital services other than services in an institution for mental disease (IMD)
- Outpatient hospital services
- Rural Health Clinic services
- Federally Qualified Health Center (FQHC) services
- Laboratory and X-ray services
- Nursing facilities for individuals 21 and over
- Early and Periodic Screening and Diagnosis and Treatment (EPSDT)
- Family planning services and supplies for individuals of child-bearing age
- Physician services
- Medical and surgical services of a dentist
- Home health services
- Nurse midwife services
- Nurse practitioner services
- Pregnancy services, including tobacco cessation programs
- Free standing birth centers
- Non-emergency transportation to medical care

Mississippi's Optional Services

- Podiatrists' services
- Chiropractors' services
- Other practitioners' services
- Clinic services
- Dental services (limited for adults)
- Physical, occupational, speech, hearing, and language therapy
- Prescribed drugs
- Eyeglasses
- Diagnostic, screening, and preventive services
- Rehabilitative services
- Intermediate care facility services
- Inpatient psychiatric facility services for individuals under 22 years old
- Hospice care
- Case management
- Christian Science sanatoria services
- Nursing facility services for individuals under age 21

C. MISSISSIPPI MEDICAID FINANCING & SERVICE DELIVERY SYSTEM

14. Overview

Medicaid System Characteristics		
Characteristics	Medicaid FFS	Medicaid Managed Care
Enrollment (April 2017)	270,965	440,958
SMI Enrollment	Although the SMI population is mandatorily enrolled in managed care unless they meet FFS criteria for exemption, dual eligibles, who constitute the majority of the SMI population, are excluded from managed care; as a result, the majority of the SMI population is served by the FFS system	
Management	Division of Medicaid	Two Care Coordination Organizations (CCOs)
Payment Model	FFS	Capitated rate
Geographic Service Area	Statewide	Statewide

Total Medicaid Beneficiaries: 711,923

Total Medicaid With SMI Beneficiaries: 44,851

FFS = Fee-For-Service
SMI = Serious Mental Illness

15. Enrollment By Eligibility Group

Mandatory FFS Enrollment

- Residents of nursing facilities or ICF for persons with I/DD
- Dual eligibles
- Waiver program enrollees
- Persons with hemophilia

Option To Enroll In FFS Or Managed Care

- American Indians/Alaskan Natives
- Children eligible for SSI income
- Children with disabilities living at home
- Foster care children or children receiving adoption assistance

Mandatory Managed Care Enrollment

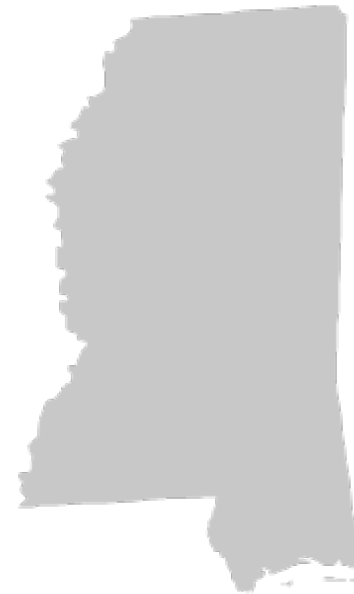
- Aged, blind, and disabled individuals
- Breast and cervical cancer program participants
- Pregnant women
- Children
- Adults eligible for SSI income

FFS = Fee-For-Service
ICF = Intermediate Care Facility

I/DD = Intellectual & Developmental Disabilities
SSI = Supplemental Security Income

16. Fee-For-Service (FFS) Program: Program Overview

- FFS enrollment as of April 2017 was 270,965*
- In addition to the traditional FFS program, Mississippi operates a 1115 waiver program to provide Medicaid benefits through the FFS program to disabled individuals with income up to 135% of the FPL



*Derived by subtracting managed care enrollment from total enrollment

FPL = Federal Poverty Level

17. Fee-For-Service (FFS) Program: Healthier Mississippi

- Mississippi has a 1115 waiver, Healthier Mississippi, that allows the state to provide Medicaid services to up to 6,000 individuals, both children and adults, who are aged or disabled and have income up to 135% of the federal poverty level (FPL)
- Individuals may not qualify for Medicare or under another Medicaid eligibility category
- The program is available statewide
 - Enrollment as of December 2016 was 4,637
- Under Mississippi's regular Medicaid program, aged and disabled individuals must have income below 75% of the FPL in order to qualify under the state plan
- Services are provided through the FFS delivery system
- Children receive all state plan benefits; for adults, the following services are excluded:
 - Nursing facility services
 - Home- and community-based waiver services
 - ICF/IDD services
 - Maternity and newborn care
- The current waiver renewal expires in September 2018

ICF = Intermediate Care Facility

IDD = Intellectual & Developmental Disabilities

18. Fee-For-Service (FFS) Program: Behavioral Health Benefits

All Medicaid mental health benefits are provided through FFS. The state's addiction treatment benefit is limited to inpatient detoxification, which is also provided FFS.

FFS Mental Health Benefits

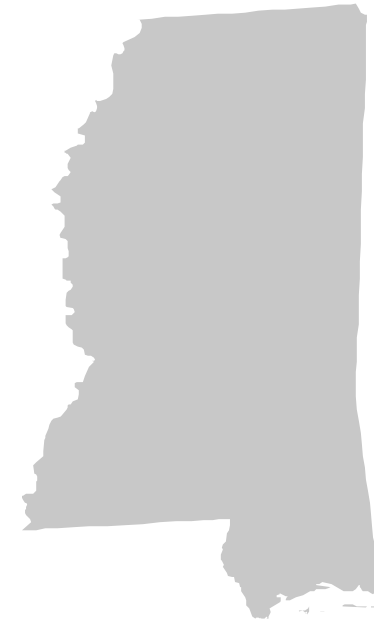
- Inpatient psychiatric care
- Psychiatric residential treatment facility for individuals under age 21
- Rehabilitative services:
 - Treatment plan development and review
 - Medication management
 - Psychosocial and nursing assessment
 - Psychosocial evaluation
 - Individual, family, group therapy
 - Psychosocial rehabilitation
 - Acute partial hospitalization
 - Crisis response and crisis residential
 - Peer and community support
 - Intensive outpatient, day treatment, and wraparound facilitation for individuals under age 21
 - Program of assertive community treatment

FFS Substance Abuse Treatment Benefits

- Inpatient detoxification

19. Fee-For-Service (FFS) Program: Serious Mental Illness (SMI) Population

- Although the SMI population is mandatorily enrolled in managed care unless they meet FFS criteria for exemption, dual eligibles, who constitute the majority of the SMI population, are excluded from managed care
 - As a result, the majority of the SMI population is served by the FFS system



20. Managed Care Program: Program Overview

- Managed care enrollment as of April 2017 was 440,958; the managed care program is called Mississippi Coordinated Access Network (MississippiCAN)
- Individuals are enrolled in managed care organizations known as Coordinated Care Organizations (CCOs)
 - There are two CCOs available statewide and individuals may choose either plan:
 - Magnolia Health
 - UnitedHealthcare Community Plan
- Enrollment in managed care is limited to the greater of:
 - 45% of the total Medicaid population or;
 - The number individuals enrolled in Medicaid managed care as of January 1, 2014, and any children enrolled in Medicaid under age 19
- All eligible children were transitioned from the FFS delivery system to managed care by July 31, 2015
 - As of April 2017, managed care enrollment accounted for 62% of the total Medicaid population
- Inpatient facility services, previously not covered by CCOs, transitioned to managed care in December 2015

FFS = Fee-For-Service

21. Managed Care Program: Behavioral Health Benefits

All behavioral health services are covered in the CCO capitation rate.

Managed Care Mental Health Benefits

- Inpatient psychiatric care
- Psychiatric residential treatment facility for individuals under age 21
- Rehabilitative services:
 - Treatment plan development and review
 - Medication management
 - Psychosocial and nursing assessment
 - Psychosocial evaluation
 - Individual, family, group therapy
 - Psychosocial rehabilitation
 - Acute partial hospitalization
 - Crisis response and crisis residential
 - Peer and community support
 - Intensive outpatient, day treatment, and wraparound facilitation for individuals under age 21
 - Program of assertive community treatment

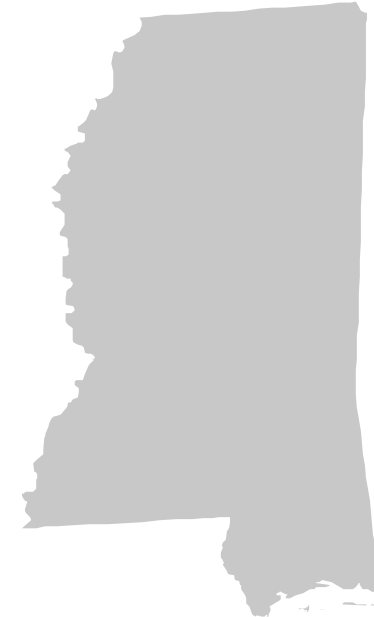
Managed Care Substance Abuse Treatment Benefits

- Inpatient detoxification

CCO = Coordinated Care Organization

22. Managed Care Program: Serious Mental Illness (SMI) Population

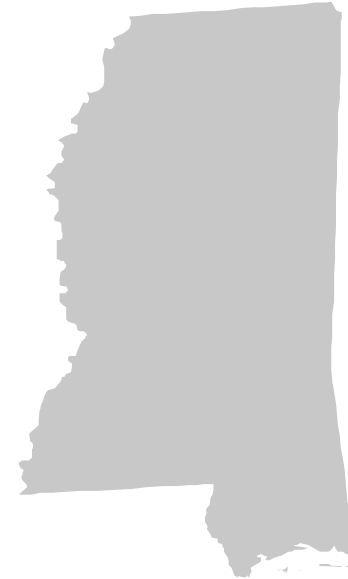
- Although the SMI population is mandatorily enrolled in managed care unless they meet FFS criteria for exemption, dual eligibles, who constitute the majority of the SMI population, are excluded from managed care
 - As a result, the majority of the SMI population is served by the FFS system



FFS = Fee-For-Service

23. Care Coordination Initiatives

- Mississippi does not operate health homes or patient-centered medical homes for the Medicaid population



24. Program Waivers With Impact On The SMI Population

Waiver Title	Waiver Description	Waiver Type	2017 Enrollment Cap	Effective Date	Expiration Date
MS Elderly & Disabled (0272.R04.00)	Provides HCBS to individuals over the age of 65 or disabled individuals over the age of 21 in need of a nursing facility level of care	1915 (c)	21,000	07/01/12	06/30/17
MS Healthier Mississippi	Provides Medicaid benefits to aged or disabled individuals with income up to 135% of the FPL; individuals may not be eligible for Medicare	1115	6,000	01/01/06	09/30/18
MS Independent Living (0255.R04.00)	Provides HCBS to individuals who are over the age of 21 and exhibit severe orthopedic and/or neurological impairment that renders the participant dependent on others, assistive devices, other types of assistance, or a combination of the three to accomplish the activities of daily living	1915 (c)	5,500	07/01/12	06/30/17
MS Assisted Living (0355.R03.00)	Provides assisted living services to individuals who are over the age of 65, or are over the age of 21 and disabled in need of a nursing facility level of care	1915 (c)	1,100	10/01/13	09/30/18

FPL = Federal Poverty Level

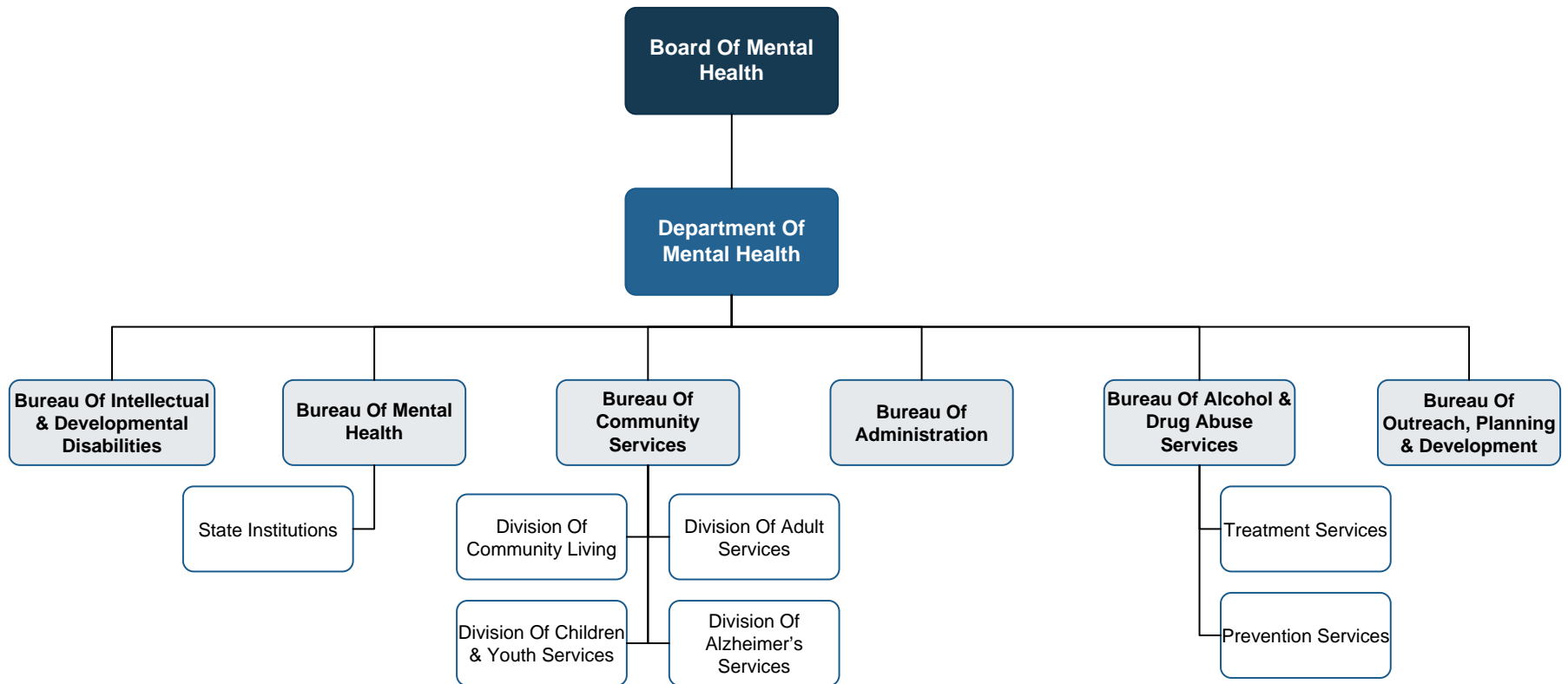
HCBS = Home- & Community-Based Services

MS = Mississippi

SMI = Serious Mental Illness

D. MISSISSIPPI BEHAVIORAL HEALTH ADMINISTRATION & FINANCE SYSTEM

25. Department Of Mental Health Organizational Chart



26. Department Of Mental Health (DMH) Key Leadership

Name	Position	Department
Diana Mikula	Executive Director	Department Of Mental Health (DMH)
Steven Allen	Deputy Executive Director	DMH
Jake Hutchins	Director	DMH Bureau Of Community Services
Marc Lewis	Director	DMH Bureau Of Mental Health
Melody Winston	Director	DMH Bureau Of Alcohol & Drug Services

27. State Psychiatric Institutions

Institution	Location	Beds	FY 2016 Individuals Served
Mississippi State Hospital	Whitfield	476	2,537
East Mississippi State Hospital	Meridian	175	1,084
North Mississippi State Hospital	Tupelo	50	629
South Mississippi State Hospital	Purvis	50	693
Central Mississippi Residential Center	Newton	68	136
Total		845	5,069

FY = Fiscal Year

28. Accountable Care Organizations (ACOs)

Medicare Shared Savings Program

1. Accountable Care Coalition of Mississippi
2. Aledade Mississippi ACO
3. Consolidated Medical Practices of Memphis, PLLC
4. Crescent City ACO, LLC
5. Hattiesburg Clinic ACO
6. Magnolia-Evergreen ACO
7. Medical Mall Services of Mississippi, LLC
8. North Mississippi Connected Care Alliance
9. Northwest Florida Health Partners, LLC
10. Ochsner Accountable Care Network
11. Pioneer Health Alliance
12. Rural Solutions
13. The Physicians Accountable Care Organization (TP-ACO)

PLLC = Professional Limited Liability Company

APPENDIX A: SOURCES

Sources

(Page 1 Of 7)

A. Health Care Marketplace Overview

1. Physical Health Care Coverage Map

- United States Department of Health and Human Services. (2016, October 18). 2017 QHP Landscape Individual Market Medical. Retrieved November 3, 2016 from <https://www.healthcare.gov/health-plan-information-2017/>
- One Mississippi. Compare Plans 2017 Plan Year. Retrieved July 31, 2017 from <https://www.onemississippi.com/2016-uhc-plans-summary-benefit-coverage>
- United States Department of Health and Human Services. (March 11, 2016). Addendum to the Health Insurance Marketplaces 2016 Open Enrollment Period: Final Enrollment Report. Retrieved March 24, 2016 from <https://aspe.hhs.gov/sites/default/files/pdf/188026/MarketPlaceAddendumFinal2016.pdf>
- Centers for Medicare and Medicaid Services. (2017, January). SNP Comprehensive Report. Retrieved January 16, 2017 from <https://www.cms.gov/Research-Statistics-Data-and-Systems/Statistics-Trends-and-Reports/MCRAdvPartDEnrolData/Special-Needs-Plan-SNP-Data.html?DLSort=1&DLEntries=10&DLPage=1&DLSortDir=descending>
- Mississippi Division of Medicaid. Enrollment Reports. Retrieved August 2, 2017 from <https://medicaid.ms.gov/resources/>
- Health Plans USA. (2017, April). Subscription Database. Available from <http://www.markfarrah.com/products/health-plans-usa.aspx>

2. Population Demographics

- United States Census Bureau. 2014 Population Estimates. Retrieved May 3, 2016 from <http://www.census.gov/popest/data/state/totals/2014/index.html>
- United States Census Bureau. 2014 Demographic and Housing Estimates. Retrieved May 3, 2016 from <http://factfinder.census.gov/faces/nav/jsf/pages/index.xhtml>
- United States Census Bureau. State Median Income. Retrieved May 3, 2016 from <https://www.census.gov/hhes/www/income/data/statemedian/index.html>
- United States Census Bureau. Poverty. Retrieved May 3, 2016 from https://www.census.gov/hhes/www/cpstables/032015/pov/pov46_002.htm

3. Population Distribution By Payer: United States v. Mississippi

- OPEN MINDS. (2016) Serious Mental Illness Prevalence Estimates.

Sources

(Page 2 Of 7)

A. Health Care Marketplace Overview (Continued)

4. Largest Health Plans By Enrollment

- OPEN MINDS. (2017, April). Health Plans Database
- TRICARE. (2017, February 15). Beneficiaries by Location. Retrieved March 3, 2017 from <http://www.tricare.mil/About/Facts/BeneNumbers/States>
- Health Plans USA. (2017, April). Subscription Database. Available from <http://www.markfarrah.com/products/health-plans-usa.aspx>
- Mississippi Division of Medicaid. Enrollment Reports. Retrieved August 2, 2017 from <https://medicaid.ms.gov/resources/>

5. Largest Health Plans By Estimated Serious Mental Illness (SMI) Enrollment

- OPEN MINDS. (2016, November). Health Plans Database
- United States Department of Defense. TRICARE Patient Numbers by State. Retrieved November 30, 2016 from <http://health.mil/I-Am-A/Media/Media-Center/Patient-Population-Statistics/Patient-Numbers-By-State>
- Health Plans USA. (2017, April). Subscription Database. Available from <http://www.markfarrah.com/products/health-plans-usa.aspx>
- Mississippi Division of Medicaid. Enrollment Reports. Retrieved August 2, 2017 from <https://medicaid.ms.gov/resources/>

6. Health Insurance Marketplace

- United States Department of Health and Human Services. (2016, October 18). 2017 QHP Landscape Individual Market Medical. Retrieved November 3, 2016 from <https://www.healthcare.gov/health-plan-information-2017/>
- One Mississippi. Compare Plans 2017 Plan Year. Retrieved July 31, 2017 from <https://www.onemississippi.com/2016-uhc-plans-summary-benefit-coverage>

B. Medicaid System Overview

7. Delivery System, Risk, & Federal Participation

- Information compiled from sources provided throughout the profile.

Sources

(Page 3 Of 7)

B. Medicaid System Overview (Continued)

8. Expansion Decision

- Information compiled from sources provided throughout the profile.

9. Care Coordination Entities

- Information compiled from sources provided throughout the profile.

10. The Uninsured

- Information compiled from sources provided throughout the profile.

11. Organizational Chart

- Mississippi Division of Medicaid. (2016, September 19). Organizational Structure. Retrieved July 31, 2017 from <https://www.medicaid.ms.gov/wp-content/uploads/2014/10/DOM-Organizational-Chart.pdf>

12. Key Leadership

- Mississippi Division of Medicaid. Executive Director. Retrieved July 31, 2017 from <https://medicaid.ms.gov/about/leadership/>
- Mississippi Division of Medicaid. (2016, August 12). DOM Medical Director. Retrieved July 31, 2017 from <https://medicaid.ms.gov/dom-medical-director-helps-to-address-provider-concerns/>
- Mississippi Division of Medicaid. Drug Utilization Review Board. Retrieved July 31, 2017 from <https://medicaid.ms.gov/providers/pharmacy/drug-utilization-review-dur-board/>

13. Program Benefits

- Mississippi Division of Medicaid. Medicaid State Plan. Retrieved August 1, 2017 from <https://medicaid.ms.gov/about/state-plan/>

Sources

(Page 4 Of 7)

C. Medicaid Financing & Service Delivery System

14. Overview

- Mississippi Division of Medicaid. (2016, January 25). Medicaid State Plan Amendment 15-0019. Retrieved August 1, 2017 from <https://www.medicaid.gov/State-resource-center/Medicaid-State-Plan-Amendments/Downloads/MS/MS-15-0019.pdf>
- Mississippi Division of Medicaid. (2015, February 26). Medicaid State Plan Amendment 14-024. Retrieved August 1, 2017 from <https://www.medicaid.gov/State-resource-center/Medicaid-State-Plan-Amendments/Downloads/MS/MS-14-024.pdf>
- Mississippi Division of Medicaid. Enrollment Reports. Retrieved August 2, 2017 from <https://medicaid.ms.gov/resources/>

15. Enrollment By Eligibility Group

- Mississippi Division of Medicaid. (2016, January 25). Medicaid State Plan Amendment 15-0019. Retrieved August 1, 2017 from <https://www.medicaid.gov/State-resource-center/Medicaid-State-Plan-Amendments/Downloads/MS/MS-15-0019.pdf>
- Mississippi Division of Medicaid. (2015, February 26). Medicaid State Plan Amendment 14-024. Retrieved August 1, 2017 from <https://www.medicaid.gov/State-resource-center/Medicaid-State-Plan-Amendments/Downloads/MS/MS-14-024.pdf>

16. Fee-For-Service (FFS) Program: Program Overview

- Mississippi Division of Medicaid. Enrollment Reports. Retrieved August 2, 2017 from <https://medicaid.ms.gov/resources/>

17. Fee-For-Service (FFS) Program: Healthier Mississippi

- Mississippi Division of Medicaid. (2015, July 24). Healthier Mississippi Medicaid Section 1115 Demonstration. Retrieved August 2, 2017 from <https://www.medicaid.gov/Medicaid-CHIP-Program-Information/By-Topics/Waivers/1115/downloads/ms/ms-healthier-mississippi-ca.pdf>

18. Fee-For-Service (FFS) Program: Behavioral Health Benefits

- Medicaid and CHIP Payment and Access Commission. (2016, June). State Policies for Behavioral Health Services Covered Under the State Plan. Retrieved August 2, 2017 from <https://www.macpac.gov/publication/behavioral-health-state-plan-services/>
- Mississippi Division of Medicaid. Medicaid State Plan. Retrieved August 1, 2017 from <https://medicaid.ms.gov/about/state-plan/>

Sources

(Page 5 Of 7)

C. Medicaid Financing & Service Delivery System (Continued)

19. Fee-For-Service (FFS) Program: Serious Mental Illness (SMI) Population

- Mississippi Division of Medicaid. (2016, January 25). Medicaid State Plan Amendment 15-0019. Retrieved August 1, 2017 from <https://www.medicaid.gov/State-resource-center/Medicaid-State-Plan-Amendments/Downloads/MS/MS-15-0019.pdf>
- Mississippi Division of Medicaid. (2015, February 26). Medicaid State Plan Amendment 14-024. Retrieved August 1, 2017 from <https://www.medicaid.gov/State-resource-center/Medicaid-State-Plan-Amendments/Downloads/MS/MS-14-024.pdf>

20. Managed Care Program: Program Overview

- Mississippi Division of Medicaid. Enrollment Reports. Retrieved August 2, 2017 from <https://medicaid.ms.gov/resources/>
- Mississippi Division of Medicaid. Medicaid State Plan. Retrieved August 1, 2017 from <https://medicaid.ms.gov/about/state-plan/>
- Mississippi Division of Medicaid. (2014, March). Care Coordination Organization Contract. Retrieved August 2, 2017 from <https://www.medicaid.ms.gov/wp-content/uploads/2014/03/MSCANDraftContract.pdf>
- Mississippi Division of Medicaid. (2015, December 15). Effective Today Inpatient Hospital Services Transitioned Into Managed Care. Retrieved August 2, 2017 from <https://medicaid.ms.gov/effective-today-inpatient-hospital-services-transitioned-into-managed-care/>

21. Managed Care Program: Behavioral Health Benefits

- Mississippi Division of Medicaid. Medicaid State Plan. Retrieved August 1, 2017 from <https://medicaid.ms.gov/about/state-plan/>
- Mississippi Division of Medicaid. (2014, March). Care Coordination Organization Contract. Retrieved August 2, 2017 from <https://www.medicaid.ms.gov/wp-content/uploads/2014/03/MSCANDraftContract.pdf>
- Medicaid and CHIP Payment and Access Commission. (2016, June). State Policies for Behavioral Health Services Covered Under the State Plan. Retrieved August 2, 2017 from <https://www.macpac.gov/publication/behavioral-health-state-plan-services/>

22. Managed Care Program: Serious Mental Illness (SMI) Population

- Mississippi Division of Medicaid. (2016, January 25). Medicaid State Plan Amendment 15-0019. Retrieved August 1, 2017 from <https://www.medicaid.gov/State-resource-center/Medicaid-State-Plan-Amendments/Downloads/MS/MS-15-0019.pdf>
- Mississippi Division of Medicaid. (2015, February 26). Medicaid State Plan Amendment 14-024. Retrieved August 1, 2017 from <https://www.medicaid.gov/State-resource-center/Medicaid-State-Plan-Amendments/Downloads/MS/MS-14-024.pdf>

Sources

(Page 6 Of 7)

C. Medicaid Financing & Service Delivery System (Continued)

23. Care Coordination Initiatives

- Centers for Medicare and Medicaid Services. (2017, May). Medicaid Health Homes SPA Overview. Retrieved August 2, 2017 from <https://www.medicaid.gov/state-resource-center/medicaid-state-technical-assistance/health-homes-technical-assistance/downloads/hh-spa-overview.pdf>
- Henry J. Kaiser Family Foundation. (2016, October 13). Implementing Coverage and Payment Initiatives: Results from a 50-State Medicaid Budget Survey for State Fiscal Years 2016 and 2017. Retrieved August 2, 2017 from <http://www.kff.org/report-section/implementing-coverage-and-payment-initiatives-emerging-delivery-system-and-payment-reforms/>

24. Program Waivers With Impact On The SMI Population

- Centers for Medicare and Medicaid Services. Demonstrations and Waivers. Retrieved August 2, 2017 from https://www.medicaid.gov/medicaid-chip-program-information/by-topics/waivers/waivers_faceted.html

D. Behavioral Health Administration & Finance System

25. Department Of Mental Health Organizational Chart

- Mississippi Department of Mental Health. (2016, May 31). Proposed Organizational Chart FY 2017. Retrieved July 31, 2017 from <http://www.lbo.ms.gov/PublicReports/DownloadReportFile?ReportId=34197>

26. Department Of Mental Health (DMH) Key Leadership

- Mississippi Department of Mental Health (2015, May 14). Organization Chart FY 2016. Retrieved August 1, 2017 from <http://www.lbo.ms.gov/PublicReports/DownloadReportFile?ReportId=6322>
- Mississippi Department of Mental Health. (2017, Winter). Mississippi Profile. Retrieved August 1, 2017 from <http://www.dmh.ms.gov/wp-content/uploads/2017/03/Mississippi-Profile-Winter-2017.pdf>
- Mississippi Department of Mental Health. (2016, Fall). Mississippi Profile. Retrieved August 1, 2017 from <http://www.dmh.ms.gov/wp-content/uploads/2016/11/Mississippi-Profile-Fall-2016.pdf>

Sources

(Page 7 Of 7)

D. Behavioral Health Administration & Finance System (Continued)

27. State Psychiatric Institutions

- Mississippi Department of Mental Health. FY 16 Annual Report. Retrieved July 31, 2017 from <http://www.dmh.ms.gov/wp-content/uploads/2016/11/DMH-FY16-Annual-Report.pdf>

28. Accountable Care Organizations (ACOs)

- OPEN MINDS Database