



The PsychU Guide To The Louisiana Mental Health System

This resource is provided for informational purposes only and is not intended as reimbursement or legal advice.

You should seek independent, qualified professional advice to ensure that your organization is in compliance with the complex legal and regulatory requirements governing health care services, and that treatment decisions are made consistent with the applicable standards of care.

Except as otherwise indicated, the information provided is accurate to the best of Otsuka's knowledge as of December 2016.

Contents

PsychU Guide To The Louisiana Mental Health System

A. Health Care Marketplace Overview

1. Physical Health Care Coverage Map
2. Population Demographics
3. Population Distribution By Payer: United States V. Louisiana
4. Largest Health Plans By Enrollment
5. Largest Health Plans By Estimated SMI Enrollment
6. Health Insurance Marketplace

B. Medicaid System Overview

7. Delivery System, Risk, & Federal Participation
8. Expansion Decision
9. Care Coordination Entities
10. The Uninsured
11. Organizational Chart
12. Key Leadership
13. Program Benefits

C. Medicaid Financing & Service Delivery System

14. Overview
15. Enrollment By Eligibility Group
16. FFS Program: Program Overview
17. FFS Program: BH Benefits
18. FFS Program: Specialized BH Benefits
19. FFS Program: SMI Population
20. Managed Care Program: Program Overview
21. Managed Care Program: Medicaid Expansion
22. Managed Care Program: BH Benefits
23. Managed Care Program: SMI Population
24. Care Coordination Initiatives
25. Program Waivers Impacting The SMI Population

D. Behavioral Health Administration & Finance System

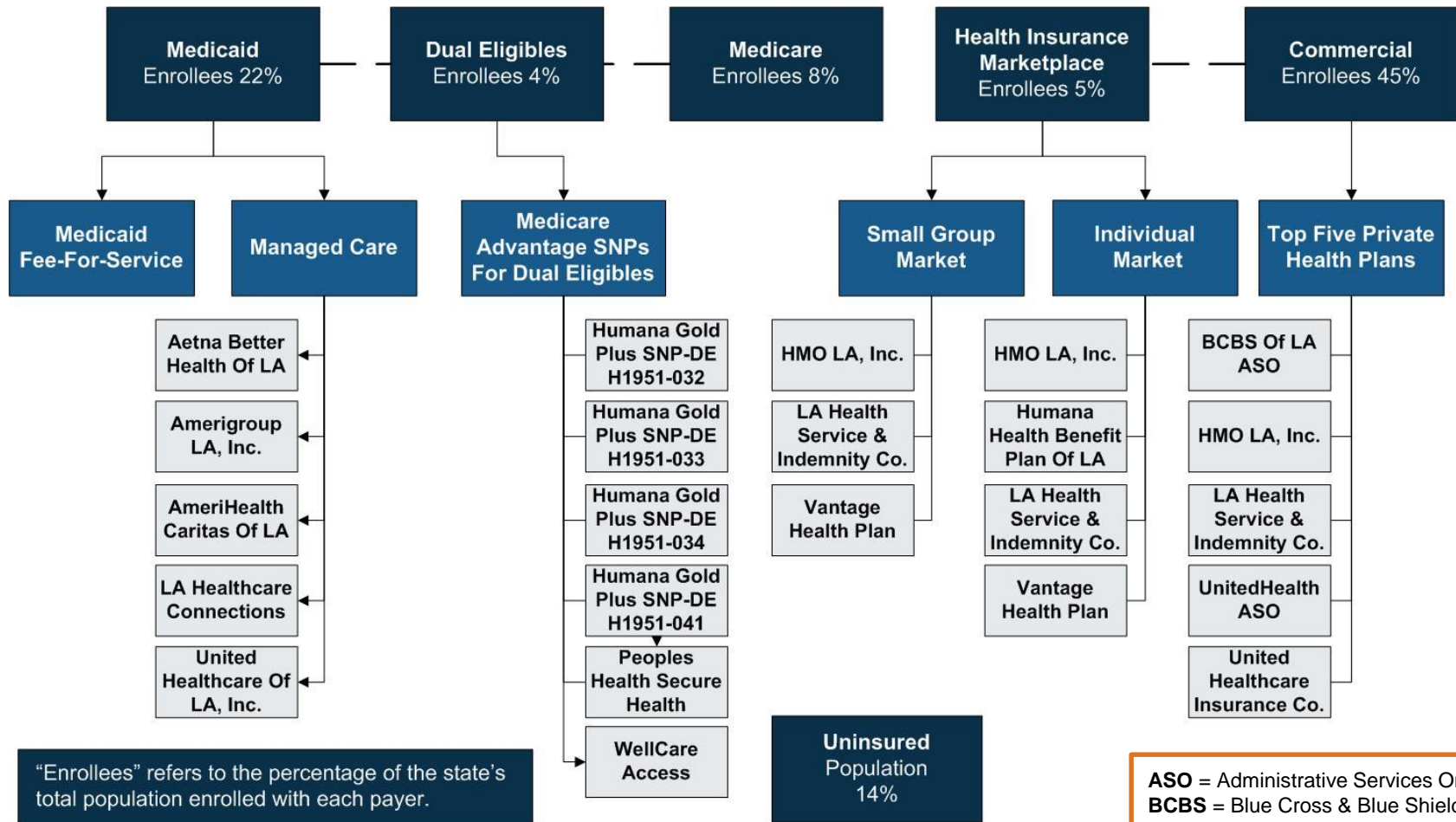
26. LDH Mental Health Organizational Chart
27. LDH Mental Health Key Leadership
28. State Psychiatric Institutions
29. ACOs

Appendix A: Sources

ACO = Accountable Care Organization
BH = Behavioral Health
FFS = Fee-For-Service
LDH = Louisiana Department Of Health
SMI = Serious Mental Illness

A. LOUISIANA HEALTH CARE MARKETPLACE OVERVIEW

1. Physical Health Care Coverage Map

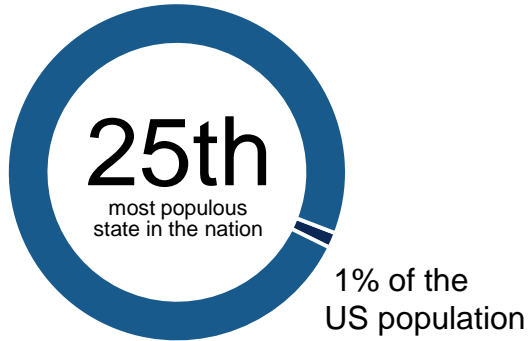


“Enrollees” refers to the percentage of the state’s total population enrolled with each payer.

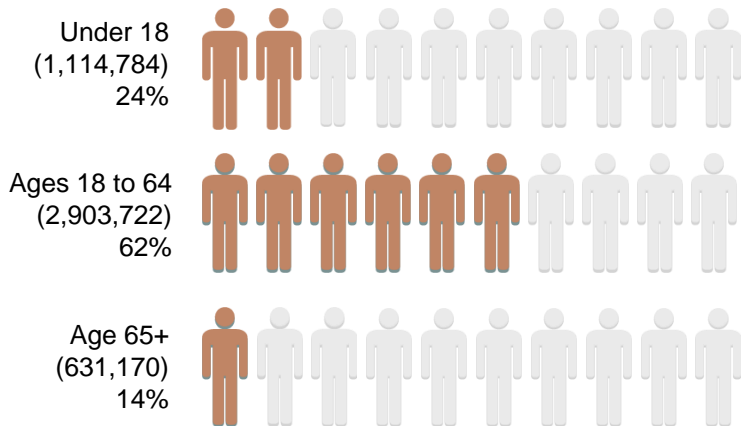
ASO = Administrative Services Only
BCBS = Blue Cross & Blue Shield
HMO = Health Maintenance Organization
SNP = Special Needs Plan

2. Population Demographics

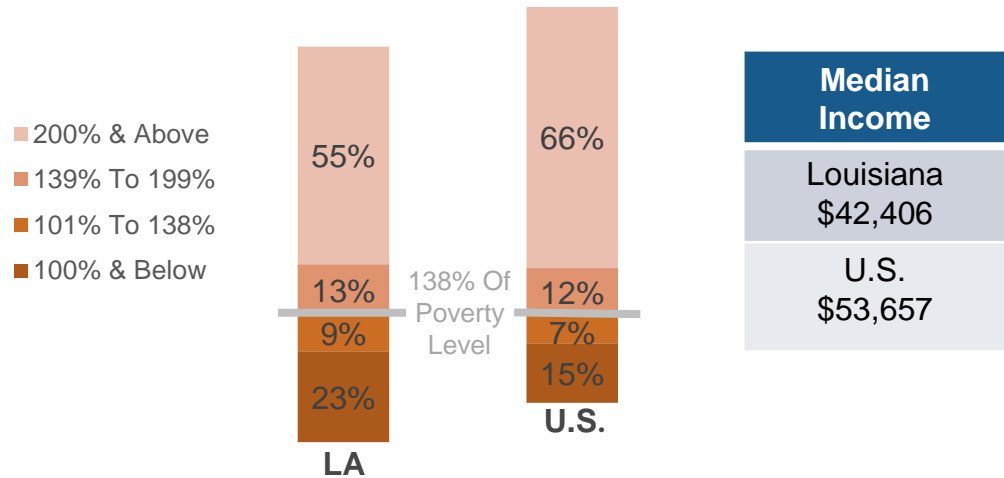
Total Louisiana Population - 4,649,676
 SMI Population - 229,222



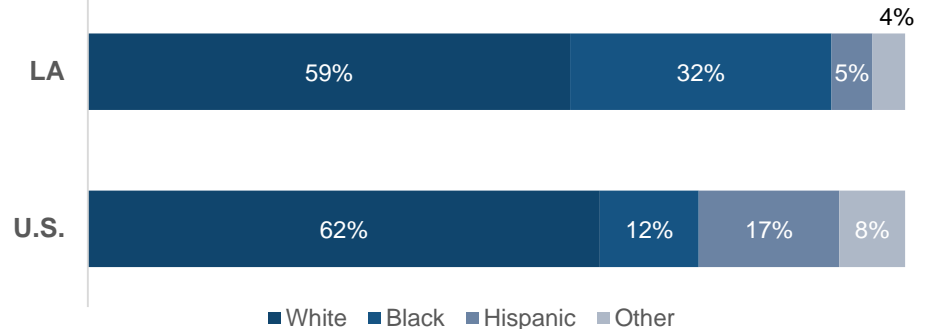
Population Distribution By Age



Population Distribution By Income To Poverty Threshold Ratio

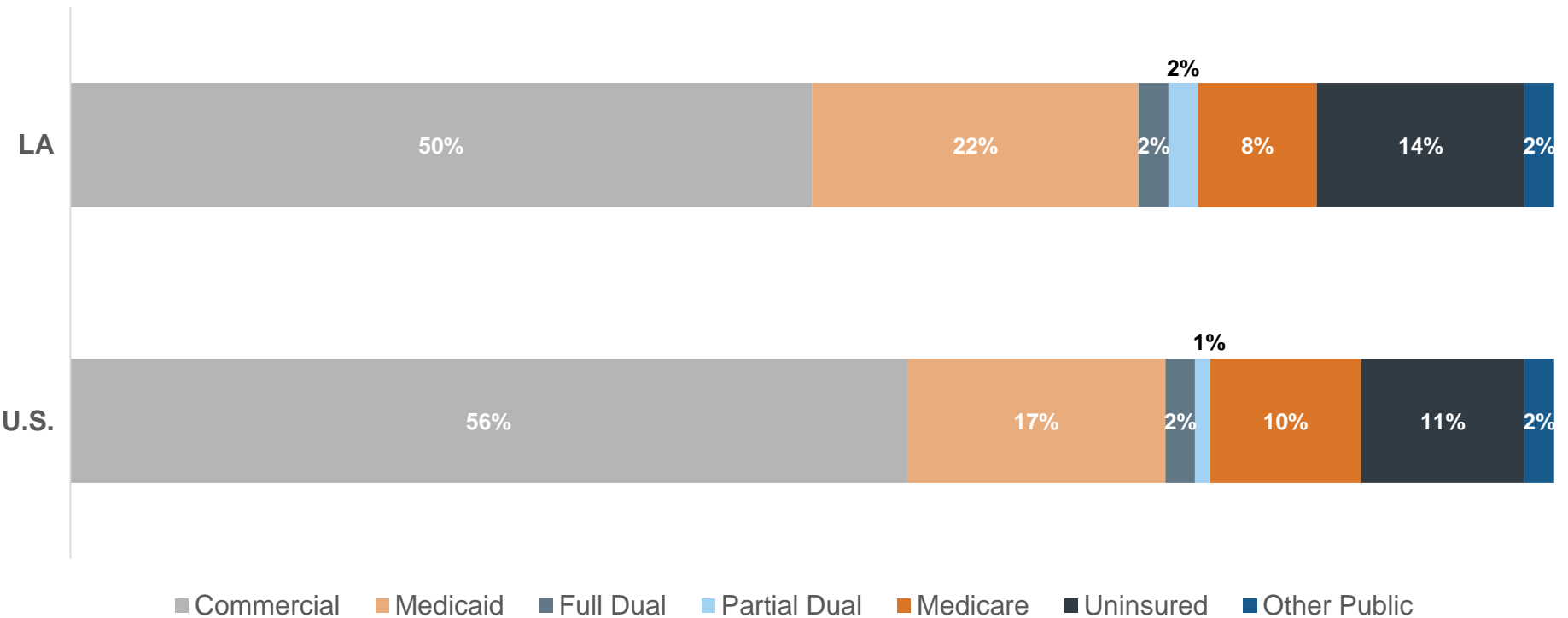


Louisiana & U.S. Racial Composition



SMI = Serious Mental Illness

3. Population Distribution By Payer: United States v. Louisiana



4. Largest Health Plans By Enrollment

Plan Name	Plan Type	Enrollment*
Medicare FFS	Medicare	522,653
Louisiana Health Service & Indemnity Company	Commercial	495,024
BlueCross & BlueShield Of Louisiana	Commercial ASO	492,000
Louisiana Healthcare Connections	Medicaid Managed Care	451,186
UnitedHealthcare	Medicaid Managed Care	396,025
UnitedHealthcare	Commercial ASO	253,935
Medicaid FFS	Medicaid	236,281
Amerigroup	Medicaid Managed Care	221,404
Amerihealth Caritas	Medicaid Managed Care	205,677
Humana Health Benefit Plan Of Louisiana, Inc.	Medicare	137,431

*Medicare and commercial enrollment as of August 2016. Medicaid enrollment as of September 2016.

ASO = Administrative Service Only
FFS = Fee For Service

5. Largest Health Plans By Estimated Serious Mental Illness (SMI) Enrollment

Plan Name	Plan Type	Enrollment*	Estimated SMI Enrollment
Medicare FFS	Medicare	522,653	74,739
Medicaid FFS	Medicaid	236,281	56,207
Louisiana Healthcare Connections	Medicaid Managed Care	451,186	19,721
Humana Health Benefit Plan Of Louisiana, Inc.	Medicare	137,431	19,653
UnitedHealthcare	Medicaid Managed Care	396,025	17,310
Louisiana Health Service & Indemnity Company	Commercial	495,024	11,732
BlueCross & BlueShield Of Louisiana ASO	Commercial ASO	492,000	11,660
Amerigroup	Medicaid Managed Care	221,404	9,678
Amerihealth Caritas	Medicaid Managed Care	205,677	8,990
Peoples Health, Inc.	Medicare	54,474	7,790

*Medicare and commercial enrollment as of August 2016. Medicaid enrollment as of September 2016.

ASO = Administrative Services Only
FFS = Fee For Service

6. Health Insurance Marketplace

Health Insurance Marketplace	
Type Of Marketplace	Federal
Individual Enrollment Contact	www.healthcare.gov
	1-800-318-2596
Small Business Enrollment Contact	www.healthcare.gov/small-businesses
	1-800-706-7893

2017 Individual Market Health Plans

- HMO Louisiana, Inc.
- Humana Health Benefit Plan Of Louisiana, Inc.
- Louisiana Health Service & Indemnity Company
- Vantage Health Plan, Inc.

2017 Small Group Market Plans

- HMO Louisiana, Inc.
- Louisiana Health Service & Indemnity Company
- Vantage Health Plan, Inc.

HMO = Health Maintenance Organization

B. LOUISIANA MEDICAID SYSTEM OVERVIEW

7. Delivery System, Risk, & Federal Participation

Medicaid Financial Delivery System	
Is Managed Care Mandatory For Populations With SMI?	Yes
Is Managed Care Mandatory For Dual-Eligibles?	No
Total Medicaid Population Distribution	<ul style="list-style-type: none"> • 16% in FFS • 84% in managed care
Medicaid Beneficiaries With SMI: <i>Primary Service System</i>	Because the SMI population must enroll in managed care unless they meet one of the FFS qualifications, the majority of the SMI population is served by managed care.
Medicaid Financing & Risk Arrangements: Behavioral Health	
Traditional Behavioral Health Services	<ul style="list-style-type: none"> • <u>FFS Population</u>: Covered FFS by the state • <u>Managed Care Population</u>: Included in the MCO capitation rate
Specialty Behavioral Health Services	<ul style="list-style-type: none"> • <u>FFS Population</u>: Covered by the MCOs via the MCO specialty behavioral health and non-emergency transportation only capitation rate • <u>Managed Care Population</u>: Included in the MCO capitation rate
Pharmaceuticals	<ul style="list-style-type: none"> • <u>FFS Population</u>: Covered FFS by the state • <u>Managed Care Population</u>: Included in MCO capitation rate
Federal Financial Participation	
FY 2017 Federal Medical Assistance Percentage (FMAP)	62.28%
CY 2017 Newly Eligible FMAP (Expansion Population)	95%

FFS = Fee-For-Service
MCO = Managed Care Organization
SMI = Serious Mental Illness

8. Expansion Decision

State Medicaid Expansion Decision	
Participating In Expansion?	Yes
Date Of Expansion	June 2016
Medicaid Eligibility Income Limit For Able-Bodied Adults	133% of federal poverty level*
Legislation Used To Expand Medicaid	The governor expanded the Medicaid program through executive order JBE 16-01 in January 2016

*The Patient Protection & Affordable Care Act requires that 5% of income be disregarded with determining eligibility.

9. Care Coordination Entities

Medicaid Care Coordination Entities For Chronic Care Populations (Including SMI)

Managed Care Plan	✓	The MCOs must employ case managers to integrate services for persons receiving specialized behavioral health services.
Accountable Care Organization (ACO) Program		The state issued a request for information regarding provider-led ACOs in November 2016.
Health Home		None
Medical Home		None
Primary Care Case Management (PCCM) Model		The Bayou Health Shared Savings PCCM program ended in February 2015.

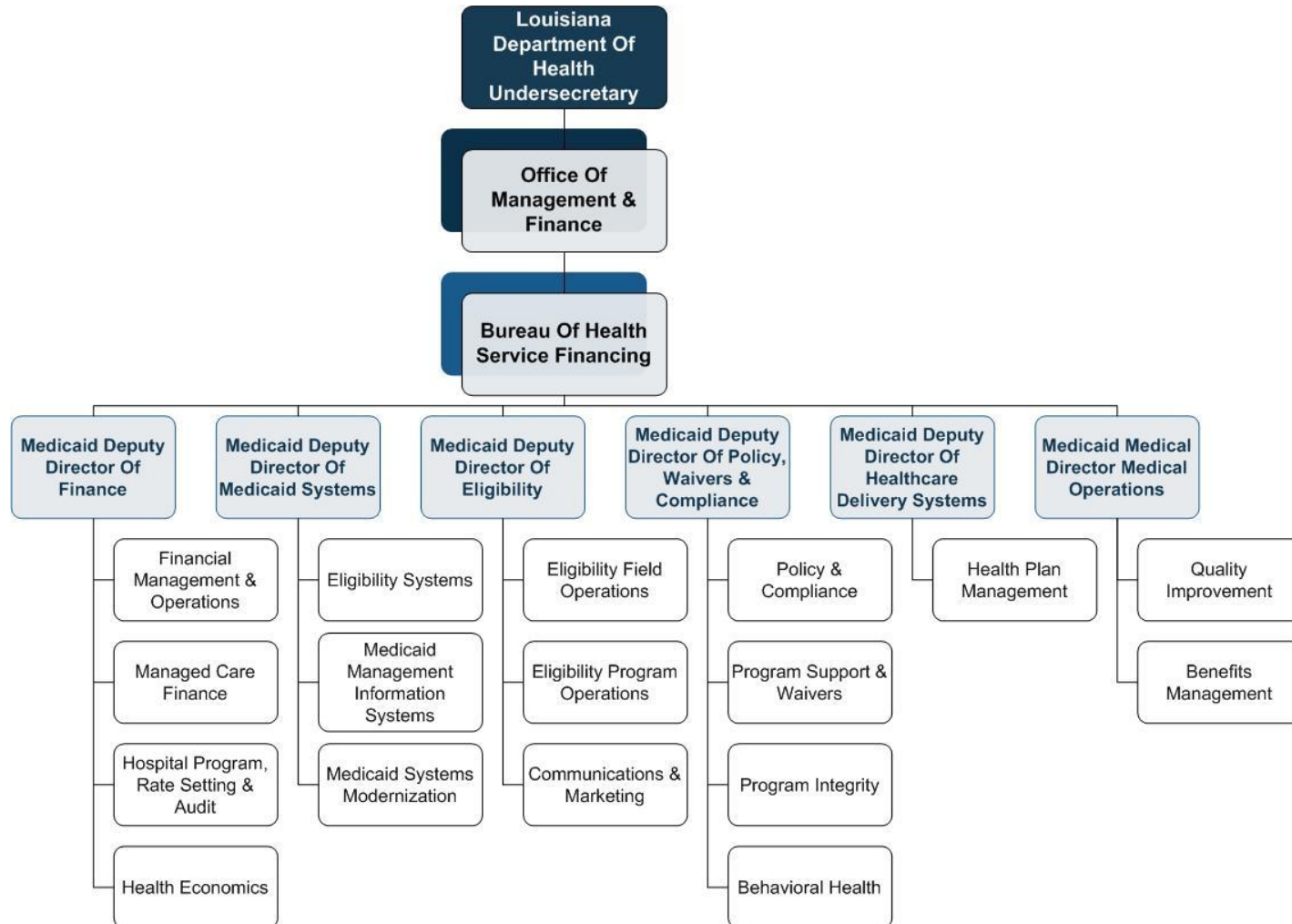
MCO = Managed Care Organization
SMI = Serious Mental Illness

10. The Uninsured

State Agency Responsible For Uninsured Citizens & Delivery System Model

Physical Health Services	The Bureau Of Primary Care and Rural Health within the Louisiana Department Of Health (LDH) is responsible for the provision of behavioral health services to the safety-net population.
Mental Health Services	The Office Of Behavioral Health within LDH provides mental health and substance abuse treatment services to the safety-net population through contracts with ten regional community behavioral health authorities called local governing entities.
Addiction Treatment Services	

11. Organizational Chart



12. Key Leadership

Name	Position	Department
Rebekah Gee, MD	Secretary	Louisiana Department Of Health (LDH)
Jeff Reynolds	Undersecretary	LDH, Office Of Management & Finance
Jen Steele	Director, State Medicaid Director	Bureau Of Health Service Financing (Medicaid)
Pam Diez	Medicaid Deputy Director	Finance Division
Bill Perkins	Medicaid Deputy Director	Medicaid Systems Division
Diane Batts	Medicaid Deputy Director	Eligibility Division
Lou Ann Owen	Medicaid Deputy Director	Policy, Waivers, & Compliance Division
Vacant	Medicaid Deputy Director	Healthcare Delivery Systems Division
SreyRam Kuy, MD	Medicaid Deputy Director	Medical Operations Division

13. Program Benefits

Federally Mandated Services

- Inpatient hospital services other than services in an institution for mental disease (IMD)
- Outpatient hospital services
- Rural Health Clinic services
- Federally Qualified Health Center (FQHC) services
- Laboratory and X-ray services
- Nursing facilities for individuals 21 and over
- Early & Periodic Screening & Diagnosis & Treatment (EPSDT)
- Family planning services and supplies for individuals of child-bearing age
- Physician services
- Medical and surgical services of a dentist
- Home health services
- Nurse midwife services
- Nurse practitioner services
- Pregnancy services, including tobacco cessation programs
- Free standing birth centers
- Non-emergency transportation to medical care

Louisiana's Optional Services

- Podiatrists' services
- Other practitioners' services
- Clinic services
- Prescribed drugs
- Dentures
- Prosthetic devices
- Rehabilitative services
- Institutions for mental diseases inpatient care for individuals over the age of 65
- Intermediate care facility services other than for mental diseases
- Inpatient psychiatric facility for individuals under 22
- Hospice care
- Case management
- Special tuberculosis services
- Nursing facility services for patients under 21

C. LOUISIANA MEDICAID FINANCING & SERVICE DELIVERY SYSTEM

14. Overview

Medicaid System Characteristics		
Characteristics	Medicaid Fee-For-Service (FFS)	Medicaid Managed Care
Enrollment (September 2016)	236,281	1,253,469
SMI Enrollment	Because the SMI population must enroll in managed care unless they meet one of the FFS qualifications, the majority of the SMI population is served by managed care.	
Management	<ul style="list-style-type: none"> Physical Health & Traditional Behavioral Health: Louisiana Department Of Health Specialty Behavioral Health: Five MCOs 	Five MCOs
Payment Model	<ul style="list-style-type: none"> Physical Health & Traditional Behavioral Health: FFS Specialty Behavioral Health: Capitated rate 	Capitated rate
Geographic Service Area	Statewide	Statewide

Total Medicaid Beneficiaries: 1,489,750 | Total Medicaid With SMI Beneficiaries: 95,344

MCO = Managed Care Organization
SMI = Serious Mental Illness

15. Enrollment By Eligibility Group

Mandatory Fee-For-Service (FFS) Enrollment

1. Dual eligibles
2. Nursing home residents
3. Residents of intermediate care facilities for persons with intellectual/developmental disabilities (ICF/IDD)
4. Persons enrolled in some specialty programs
5. Persons receiving family planning program services only
6. Persons receiving emergency services only

Option To Enroll In FFS Or Managed Care

1. Individuals receiving home- and community-based services
2. Children with disabilities
3. Children in foster care
4. Children receiving adoption assistance
5. Children receiving services through a family-centered, community-based coordinated care system
6. Persons enrolled in the Family Opportunity Act Medicaid buy-in program
7. Native Americans
8. Persons with developmental disabilities under the age of 21

Mandatory Managed Care Enrollment

1. Children under 19 years old
2. Parents and caretaker relatives
3. Aged, blind, and disabled adults
4. Expansion adult group
5. Pregnant women
6. Breast and cervical cancer program

16. Fee-For-Service (FFS) Program: Program Overview

- FFS enrollment as of September 2016 was 236,281.
- Approximately 120,000 FFS program beneficiaries are enrolled in one of the five Healthy Louisiana managed care plans for the limited purpose of receiving specialty behavioral health and/or non-emergency medical transportation services only.
- If an individual does not exercise the option to select a managed care plan to receive these services, the state will assign one.



17. Fee-For-Service (FFS) Program: Behavioral Health Benefits

- The specialized behavioral health services carve-out to the Louisiana Behavioral Health Partnership, managed by Magellan Health Services, ended in December 2015.
- FFS beneficiaries who require specialized behavioral health services must enroll with one of the five Healthy Louisiana managed care plans to receive specialized services.
 - The managed care plans receive a capitated rate to provide specialized behavioral health services and non-emergency medical transportation (NEMT) to FFS beneficiaries.
 - Physical health, pharmacy, and traditional behavioral health services continue to be provided by the state on a FFS basis.
 - Specialized behavioral health services are listed on the following slide.
- Traditional behavioral health services that are covered FFS by the state include, but are not limited to, the following when provided in a primary care setting:
 - Screening
 - Prevention
 - Early intervention
 - Medication management
 - Treatment and referral services
- Magellan continues to manage Coordinated System of Care, which is Louisiana's program providing services and supports to approximately 2,400 children and young adults with significant behavioral health challenges or co-occurring disorders that place them at-risk for out-of-home placement.

18. Fee-For-Service (FFS) Program: Specialized Behavioral Health Benefits

- Specialized behavioral health benefits, along with NEMT, are delivered to the FFS population through the five Healthy Louisiana managed care plans.
- Physical health, pharmacy, and traditional behavioral health services remain the responsibility of the state and are reimbursed on a FFS basis.

Specialized Mental Health Benefits

1. Services provided by psychiatrists, licensed mental health professionals, and advance practice registered nurses
2. Community psychiatric support and treatment
3. Psychosocial rehabilitation
4. Crisis intervention
5. Psychiatric residential treatment facilities and therapeutic group homes for persons under age 21
6. Crisis stabilization for persons under age 21
7. Inpatient care
8. Assertive community treatment (ACT)

Specialized Substance Abuse Treatment Benefits

1. Screening and brief intervention
2. Assessment
3. Individual, group, and family services
4. Residential treatment
5. Acute and subacute detoxification
6. Intensive outpatient services
7. Halfway house services

NEMT = Non-Emergency Medical Transportation

19. Fee-For-Service (FFS) Program: Serious Mental Illness (SMI) Population

- The SMI population is mandatorily enrolled in managed care unless they meet FFS criteria for exemption.
- Members of the FFS population who require specialized behavioral health services must enroll in a managed care program to receive those services as well as NEMT.



NEMT = Non-Emergency Medical Transportation

20. Managed Care Program: Program Overview

- Medicaid managed care enrollment as of September 2016 was 1,253,469.
- Louisiana renamed its managed care program Healthy Louisiana in 2016. The program was previously known as Bayou Health.
- The Healthy Louisiana program serves both the traditional Medicaid population and the Medicaid expansion population.
- There are five Healthy Louisiana plans serving the managed care population.
 - Plans are contracted to provide services statewide.
 - Enrollees who do not choose a plan are auto-assigned to one.
- The five Healthy Louisiana managed care plans also deliver limited services to certain members of the FFS population.

FFS = Fee-For-Service

21. Managed Care Program: Medicaid Expansion

- In January 2016, Governor John Edwards issued an executive order expanding the Medicaid program to childless adults, ages 19 to 64, with incomes up to 138% of the federal poverty level under the provisions of the Patient Protection & Affordable Care Act.
- Implementation began in June 2016, and as of November 2016, 354,054 persons have enrolled through the expansion.
- The expansion enrollment includes approximately 142,000 persons who were previously receiving Medicaid family planning services only, and approximately 60,000 persons who were already served through the state's Greater New Orleans Community Health Connections section 1115 demonstration waiver program.
- The benefit plan for the expansion population aligns with the state plan benefits received by the traditional Medicaid population.
- Beneficiaries in the expansion population are enrolled in the Healthy Louisiana managed care program unless they meet FFS criteria.

FFS = Fee-For-Service

22. Managed Care Program: Behavioral Health Benefits

All behavioral health and pharmacy benefits are included in the MCO capitation rate.

Managed Care Mental Health Benefits

1. Diagnostic evaluation
2. Individual, group, and family psychotherapy
3. Electroconvulsive therapy
4. Psychological testing
5. Inpatient care
6. Therapeutic group home, under age 21
7. Community psychiatric supportive treatment
8. Assertive community treatment (ACT)
9. Crisis intervention
10. Crisis stabilization, under age 21
11. Psychosocial rehabilitation

Managed Care Substance Abuse Treatment Benefits

1. Screening and brief intervention
2. Assessment
3. Individual, group, and family services
4. Residential treatment
5. Acute and subacute detoxification
6. Intensive outpatient services
7. Halfway house services

MCO = Managed Care Organization

23. Managed Care Program: Serious Mental Illness (SMI) Population

- The SMI population is mandatorily enrolled in managed care unless they meet FFS criteria for exemption.
- The carve-out of specialized behavioral health services to the Louisiana Behavioral Health Partnership, under the management of Magellan, ended in December 2015.
- Specialized behavioral health services are now the responsibility of the MCOs.



FFS = Fee-For-Service
MCO = Managed Care Organization

24. Care Coordination Initiatives

Louisiana has not pursued the health home state plan option under Medicaid health reform and has not invested in a statewide model of patient-centered medical homes.

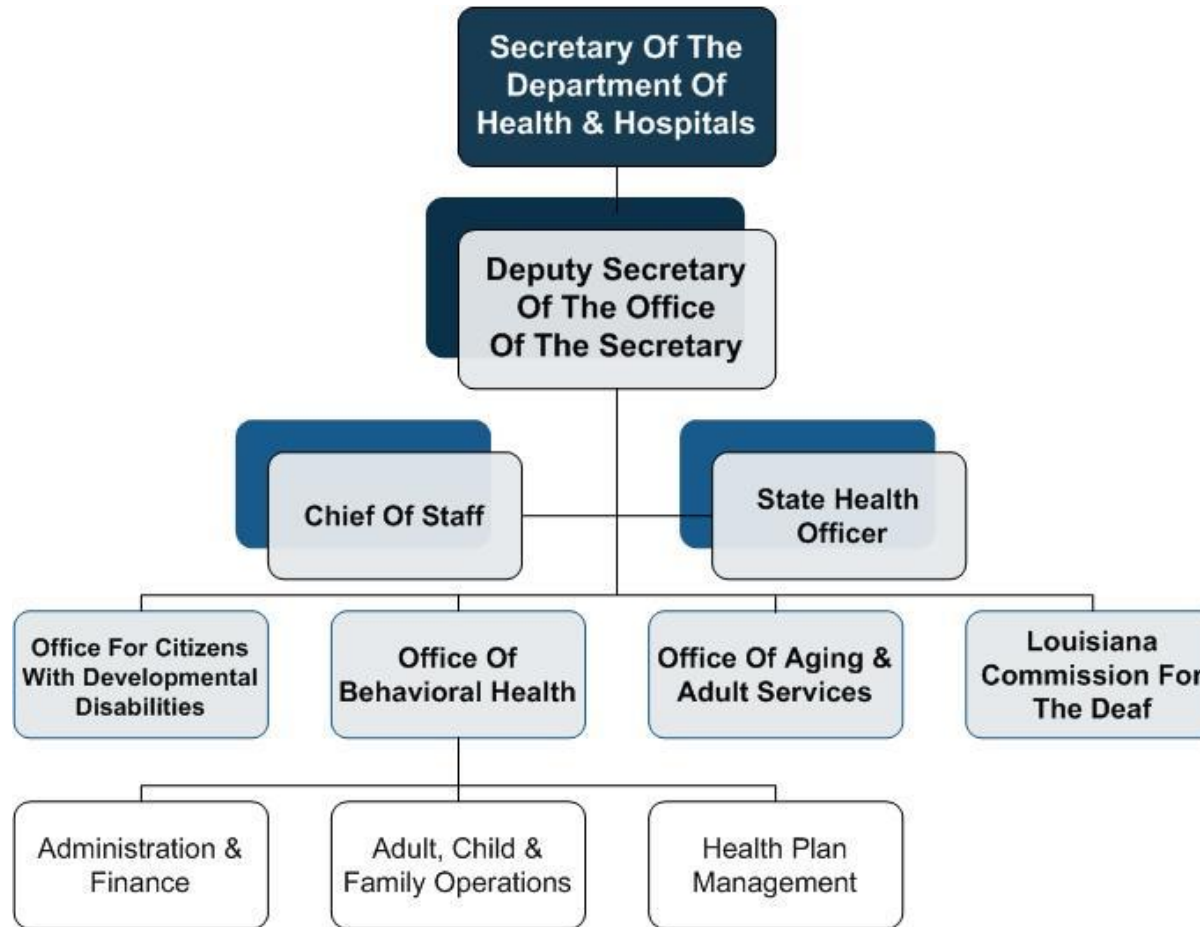


25. Program Waivers Impacting The Serious Mental Illness (SMI) Population

Waiver Title	Waiver Description	Waiver Type	2017 Enrollment Cap	Effective Date	Expiration Date
LA Community Choices (0866.R01.00)	Provides home- and community-based services to adults with physical disabilities ages 21 to 64, and adults age 65 and over in need of a nursing facility level of care.	1915 (c)	5,785	07/01/14	06/30/19
LA Adult Day Health Care (0121.R06.00)	Provides adult day care and other community supports to adults with physical disabilities ages 22 to 64 and persons age 65 and over in need of a nursing facility level of care.	1915 (c)	935	07/01/12	06/30/17

D. LOUISIANA BEHAVIORAL HEALTH ADMINISTRATION & FINANCE SYSTEM

26. LDH Mental Health Organizational Chart



LDH = Louisiana Department Of Health

27. LDH Mental Health Key Leadership

Name	Position	Department
Rebekah Gee, MD	Secretary	LDH
Michelle Alletto	Deputy Secretary	Office Of The Secretary
James Hussey, MD	Assistant Secretary, Medical Director	Office Of Behavioral Health
Janice Petersen	Deputy Assistant Secretary For Adult, Child, & Family Operations	Office Of Behavioral Health
Amanda Joyner	Deputy Assistant Secretary For Administration & Finance	Office Of Behavioral Health
Karen Stubbs	Deputy Assistant Secretary For Health Plan Management	Office Of Behavioral Health

LDH = Louisiana Department Of Health

28. State Psychiatric Institutions

Institution	Location	Beds	FY 2014-2015 Average Daily Census
Central Louisiana State Hospital	Pineville	196	117
Eastern Louisiana Mental Health System	Jackson	470	475
Total		666	592

29. Accountable Care Organizations (ACOs)

Medicare Shared Savings Program

1. Baton Rouge Clinic
2. CHRISTUS Louisiana ACO, LLC
3. Crescent City ACO, LLC
4. Health Leaders Medicare ACO Network
5. Louisiana Physicians ACO, LLC
6. Ochsner Accountable Care Network
7. The Physicians Accountable Care Organization (TP-ACO)

APPENDIX A: SOURCES



Sources

(Page 1 Of 7)

A. Health Care Marketplace Overview

1. Physical Health Care Coverage Map

- United States Department of Health and Human Services. (2016, October 18). 2017 QHP Landscape Individual Market Medical. Retrieved November 3, 2016 from <https://www.healthcare.gov/health-plan-information-2017/>
- United State Department of Health and Human Services. (2016, October 18). 2017 QHP Landscape SHOP Market Medical. Retrieved November 3, 2016 from <https://www.healthcare.gov/shop-health-plan-information-2017/>
- United States Department of Health and Human Services. (March 11, 2016). Addendum to the Health Insurance Marketplaces 2016 Open Enrollment Period: Final Enrollment Report. Retrieved March 24, 2016 from <https://aspe.hhs.gov/sites/default/files/pdf/188026/MarketPlaceAddendumFinal2016.pdf>
- Louisiana Department of Health. (2016, October). September 2016 Enrollment Trends Report. Retrieved December 13, 2016 from <http://dhh.louisiana.gov/index.cfm/page/1275>
- OPEN MINDS. (2016, November). Health Plans Database.

2. Population Demographics

- United States Census Bureau. 2014 Population Estimates. Retrieved May 3, 2016 from <http://www.census.gov/popest/data/state/totals/2014/index.html>
- United States Census Bureau. 2014 Demographic and Housing Estimates. Retrieved May 3, 2016 from <http://factfinder.census.gov/faces/nav/jsf/pages/index.xhtml>
- United States Census Bureau. State Median Income. Retrieved May 3, 2016 from <https://www.census.gov/hhes/www/income/data/statemedian/index.html>
- United States Census Bureau. Poverty. Retrieved May 3, 2016 from https://www.census.gov/hhes/www/cpstables/032015/pov/pov46_002.htm

3. Population Distribution By Payer: United States v. Louisiana

- OPEN MINDS. (2016) Serious Mental Illness Prevalence Estimates

Sources

(Page 2 Of 7)

A. Health Care Marketplace Overview (Continued)

4. Largest Health Plans By Enrollment

- OPEN MINDS. (2016, November). Health Plans Database.
- United States Department of Defense. TRICARE Patient Numbers by State. Retrieved November 30, 2016 from <http://health.mil/I-Am-A/Media/Media-Center/Patient-Population-Statistics/Patient-Numbers-By-State>

5. Largest Health Plans By Estimated Serious Mental Illness (SMI) Enrollment

- OPEN MINDS. (2016, November). Health Plans Database.
- United States Department of Defense. TRICARE Patient Numbers by State. Retrieved November 30, 2016 from <http://health.mil/I-Am-A/Media/Media-Center/Patient-Population-Statistics/Patient-Numbers-By-State>

6. Health Insurance Marketplace

- United States Department of Health and Human Services. (2016, October 18). 2017 QHP Landscape Individual Market Medical. Retrieved November 3, 2016 from <https://www.healthcare.gov/health-plan-information-2017/>
- United State Department of Health and Human Services. (2016, October 18). 2017 QHP Landscape SHOP Market Medical. Retrieved November 3, 2016 from <https://www.healthcare.gov/shop-health-plan-information-2017/>

B. Medicaid System Overview

7. Delivery System, Risk, & Federal Participation

- Information compiled from sources provided throughout the profile.

8. Expansion Decision

- Information compiled from sources provided throughout the profile.

Sources

(Page 3 Of 7)

B. Medicaid System Overview (Continued)

9. Care Coordination Entities

- Information compiled from sources provided throughout the profile.

10. The Uninsured

- Information compiled from sources provided throughout the profile.

11. Organizational Chart

- Louisiana Department of Health. (2016, November 14). Organizational Chart. Retrieved December 13, 2016 from <http://new.dhh.louisiana.gov/assets/docs/OrgCharts/LDHorgchart.pdf>
- Louisiana Department of Health. (2016, November 2). Medicaid Organizational Chart. Retrieved December 13, 2016 from <http://new.dhh.louisiana.gov/assets/docs/OrgCharts/Medicaid-OrgChart.pdf>

12. Key Leadership

- Louisiana Department of Health. (2016, November 14). Organizational Chart. Retrieved December 13, 2016 from <http://new.dhh.louisiana.gov/assets/docs/OrgCharts/LDHorgchart.pdf>
- Louisiana Department of Health. (2016, November 2). Medicaid Organizational Chart. Retrieved December 13, 2016 from <http://new.dhh.louisiana.gov/assets/docs/OrgCharts/Medicaid-OrgChart.pdf>

13. Program Benefits

- Louisiana Department of Health. Medicaid State Plan. Retrieved December 2, 2016 from http://dhh.louisiana.gov/assets/medicaid/StatePlan/Sec3/Attachment_3.1-A_Feb-19-16.pdf

Sources

(Page 4 Of 7)

C. Medicaid Financing & Service Delivery System

14. Overview

- Louisiana Department of Health. (2016, October). September 2016 Enrollment Trends Report. Retrieved December 13, 2016 from <http://dhh.louisiana.gov/index.cfm/page/1275>
- Louisiana Department of Health. Medicaid State Plan. Retrieved December 2, 2016 from http://dhh.louisiana.gov/assets/medicaid/StatePlan/Sec3/Attachment_3.1-A_Feb-19-16.pdf
- Louisiana Department of Health. Louisiana Medicaid Annual Report State Fiscal Year 2014/15. Retrieved November 30, 2016 from http://dhh.louisiana.gov/assets/medicaid/AnnualReports/MAR_SFY2014_15.pdf

15. Enrollment By Eligibility Group

- Louisiana Department of Health. (2014, July 28). Request for Proposals: Bayou Health Managed Care Organizations. Retrieved December 7, 2016 from <http://dhh.louisiana.gov/assets/docs/contracts/BayouHealthPrepaidFINAL72814.pdf>

16. Fee-For-Service (FFS) Program: Program Overview

- Louisiana Department of Health. (2016, January 6). Managed Care Contract Amendment. Retrieved December 13, 2016 from http://new.dhh.louisiana.gov/assets/docs/BayouHealth/Contract_Amendments/2015Contracts/Aetna_A4_5-13-16.pdf
- Louisiana Department of Health. (2016, October). September 2016 Enrollment Trends Report. Retrieved December 13, 2016 from <http://dhh.louisiana.gov/index.cfm/page/1275>
- Louisiana Department of Health. (2015, December 1). Louisiana Medicaid Transition of Behavioral Health Services to Bayou Health. Retrieved December 13, 2016 from http://new.dhh.louisiana.gov/assets/docs/BayouHealth/BHIntegration/Road_Show_Slides_for_Lake_Charles_Session_20151112.pdf

17. Fee-For-Service (FFS) Program: Behavioral Health Benefits

- Louisiana Department of Health. (2016, January 6). Managed Care Contract Amendment. Retrieved December 13, 2016 from http://new.dhh.louisiana.gov/assets/docs/BayouHealth/Contract_Amendments/2015Contracts/Aetna_A4_5-13-16.pdf
- Louisiana Department of Health. (2015, December 1). Louisiana Medicaid Transition of Behavioral Health Services to Bayou Health. Retrieved December 13, 2016 from http://new.dhh.louisiana.gov/assets/docs/BayouHealth/BHIntegration/Road_Show_Slides_for_Lake_Charles_Session_20151112.pdf

Sources

(Page 5 Of 7)

C. Medicaid Financing & Service Delivery System (Continued)

18. Fee-For-Service (FFS) Program: Specialized Behavioral Health Benefits

- Louisiana Department of Health. (2015, December 1). Louisiana Medicaid Transition of Behavioral Health Services to Bayou Health. Retrieved December 13, 2016 from http://new.dhh.louisiana.gov/assets/docs/BayouHealth/BHIntegration/Road_Show_Slides_for_Lake_Charles_Session_20151112.pdf
- Louisiana Department of Health. Specialized Behavioral Health Benefits Fee Schedule. Retrieved December 13, 2016 from <http://new.dhh.louisiana.gov/assets/docs/BayouHealth/BHIntegration/SpecializedBehavioralHealthFeeSchedule.pdf>

19. Fee-For-Service (FFS) Program: Serious Mental Illness (SMI) Population

- Louisiana Department of Health. (2015, December 1). Louisiana Medicaid Transition of Behavioral Health Services to Bayou Health. Retrieved December 13, 2016 from http://new.dhh.louisiana.gov/assets/docs/BayouHealth/BHIntegration/Road_Show_Slides_for_Lake_Charles_Session_20151112.pdf

20. Managed Care Program: Program Overview

- Louisiana Department of Health. (2016, January 6). Managed Care Contract Amendment. Retrieved December 13, 2016 from http://new.dhh.louisiana.gov/assets/docs/BayouHealth/Contract_Amendments/2015Contracts/Aetna_A4_5-13-16.pdf

21. Managed Care Program: Medicaid Expansion

- Louisiana Department of Health. Medicaid Expansion Dashboard. Retrieved December 13, 2016 from <http://ldh.la.gov/healthyladashboard/>
- Governor of Louisiana. (2016, January 12). Executive Order JBE 16-01 Medicaid Expansion. Retrieved December 13, 2016 from <http://gov.louisiana.gov/assets/ExecutiveOrders/JBE1601.pdf>
- Louisiana Department of Health. (2016, April 21). Medicaid State Plan Amendment 16-0004. <https://www.medicare.gov/State-resource-center/Medicaid-State-Plan-Amendments/Downloads/LA/2016/LA-16-0004.pdf>
- Louisiana Department of Health. (2016, April 7). Medicaid State Plan Amendment 16-0005. <https://www.medicare.gov/State-resource-center/Medicaid-State-Plan-Amendments/Downloads/LA/LA-16-0005.pdf>

Sources

(Page 6 Of 7)

C. Medicaid Financing & Service Delivery System (Continued)

22. Managed Care Program: Behavioral Health Benefits

- Louisiana Department of Health. Specialized Behavioral Health Benefits Fee Schedule. Retrieved December 13, 2016 from <http://new.dhh.louisiana.gov/assets/docs/BayouHealth/BHIntegration/SpecializedBehavioralHealthFeeSchedule.pdf>
- Louisiana Department of Health. (2016, January 6). Managed Care Contract Amendment. Retrieved December 13, 2016 from http://new.dhh.louisiana.gov/assets/docs/BayouHealth/Contract_Amendments/2015Contracts/Aetna_A4_5-13-16.pdf

23. Managed Care Program: Serious Mental Illness (SMI) Population

- Louisiana Department of Health. (2015, December 1). Louisiana Medicaid Transition of Behavioral Health Services to Bayou Health. Retrieved December 13, 2016 from http://new.dhh.louisiana.gov/assets/docs/BayouHealth/BHIntegration/Road_Show_Slides_for_Lake_Charles_Session_20151112.pdf

24. Care Coordination Initiatives

- Centers for Medicare and Medicaid Services. (2015, December). Approved Medicaid Health Home State Plan Amendments. Retrieved December 7, 2016 from https://www.medicare.gov/state-resource-center/medicaid-state-technical-assistance/health-homes-technical-assistance/downloads/hh-map_v51.pdf
- Henry J. Kaiser Family Foundation. (2015, October). Medicaid Reforms to Expand Coverage, Control Costs, and Improve Care. Retrieved December 7, 2016 from <http://files.kff.org/attachment/report-medicare-reforms-to-expand-coverage-control-costs-and-improve-care-results-from-a-50-state-medicare-budget-survey-for-state-fiscal-years-2015-and-2016>

25. Program Waivers Impacting The Serious Mental Illness (SMI) Population

- Centers for Medicare and Medicaid Services. Demonstrations and Waivers. Retrieved December 7, 2016 from https://www.medicare.gov/medicaid-chip-program-information/by-topics/waivers/waivers_faceted.html

Sources

(Page 7 Of 7)

D. Behavioral Health Administration & Finance System

26. LDH Mental Health Organizational Chart

- Louisiana Department of Health. (2016, November 14). Organizational Chart. Retrieved December 13, 2016 from <http://new.dhh.louisiana.gov/assets/docs/OrgCharts/LDHorgchart.pdf>
- Louisiana Department of Health. Office of Behavioral Health Leadership. Retrieved December 13, 2016 from <http://dhh.louisiana.gov/index.cfm/page/80>

27. LDH Mental Health Key Leadership

- Louisiana Department of Health. (2016, November 14). Organizational Chart. Retrieved December 13, 2016 from <http://new.dhh.louisiana.gov/assets/docs/OrgCharts/LDHorgchart.pdf>
- Louisiana Department of Health. Office of Behavioral Health Leadership. Retrieved December 13, 2016 from <http://dhh.louisiana.gov/index.cfm/page/80>

28. State Psychiatric Institutions

- Louisiana Department of Health. Office of Behavioral Health Directory. Retrieved December 5, 2016 from <http://dhh.louisiana.gov/index.cfm/directory/detail/217>
- Louisiana Legislative Auditor. (2016, May 4). Central Louisiana State Hospital Audit Procedure Report. Retrieved December 5, 2016 from [https://app.lla.state.la.us/PublicReports.nsf/73552967B905C6BC86257FA800495C4E/\\$FILE/0000ED66.pdf](https://app.lla.state.la.us/PublicReports.nsf/73552967B905C6BC86257FA800495C4E/$FILE/0000ED66.pdf)
- Louisiana Department of Administration. Department of Health and Hospitals FY17 Executive Budget Reporting Document. Retrieved December 5, 2016 from https://www.doa.la.gov/opb/pub/FY17/SupportingDocument/09A_Department_of_Health_and_Hospitals.pdf

29. Accountable Care Organizations (ACOs)

- OPEN MINDS Database