



The PsychU Guide To The Texas Mental Health System

This resource is provided for informational purposes only and is not intended as reimbursement or legal advice.

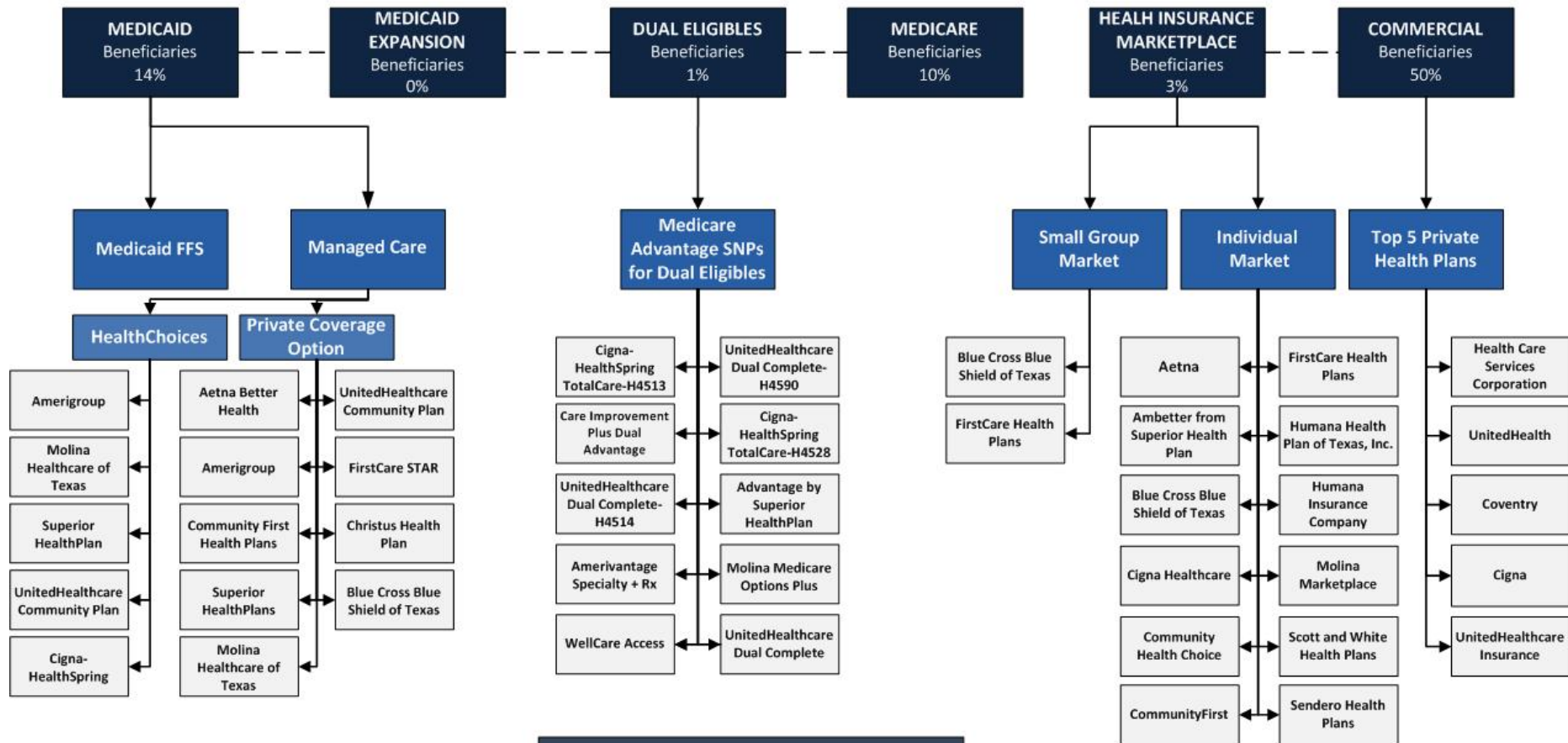
You should seek independent, qualified professional advice to ensure that your organization is in compliance with the complex legal and regulatory requirements governing health care services, and that treatment decisions are made consistent with the applicable standards of care.

The PsychU Guide To Mental Health Payers In Texas - Contents

1. Health Care Coverage Map Of Texas
2. Population Distribution By Payer: National vs. State
3. Largest Health Plans In Texas By Enrollment
4. Largest Health Plans in Texas By SMI Enrollment
5. Texas Medicaid System Overview
6. Texas Medicaid Governance
7. Texas Medicaid System Benefits
8. Texas Medicaid Financing & Service Delivery
9. Texas Medicaid Fee-For-Service
10. Texas Medicaid Managed Care
11. Texas Medicaid Medical & Health Home Initiatives
12. Texas State Mental Health & Addiction Treatment Department Organization Chart
13. Texas State Mental Health & Addiction Treatment Department Governance
14. Texas State Psychiatric Institutions
15. Texas Accountable Care Organizations (ACOs)
16. Texas Health Care Reform Initiatives
17. Texas Health Insurance Marketplace Plans
18. Texas Essential Health Benefit Benchmark Plan

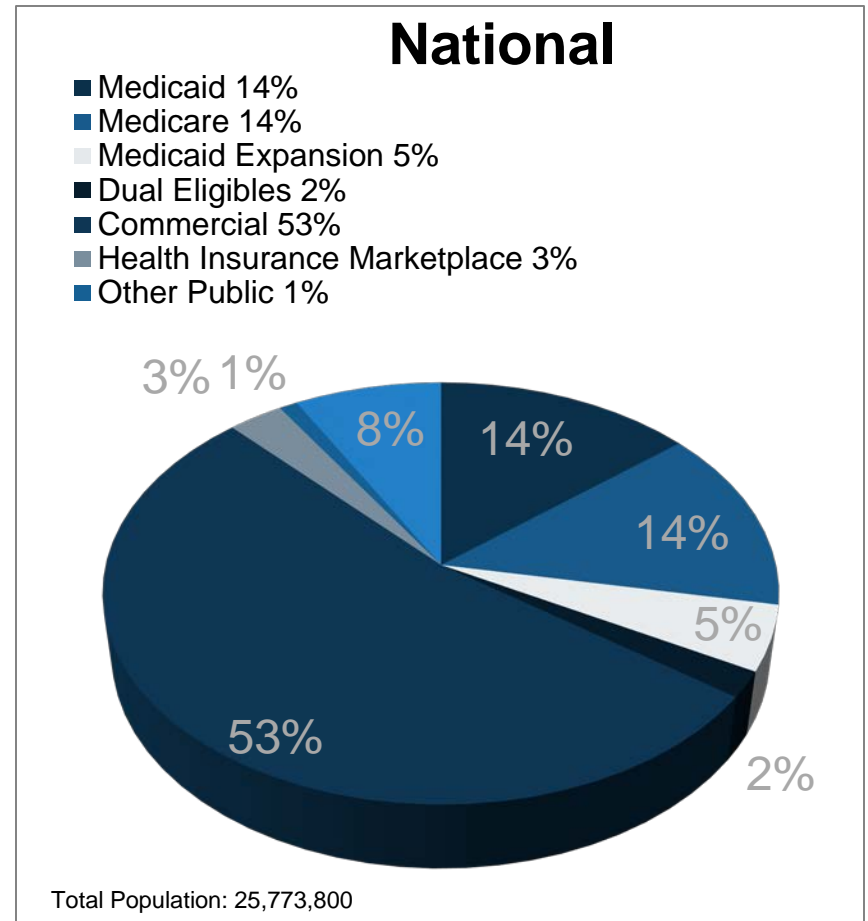
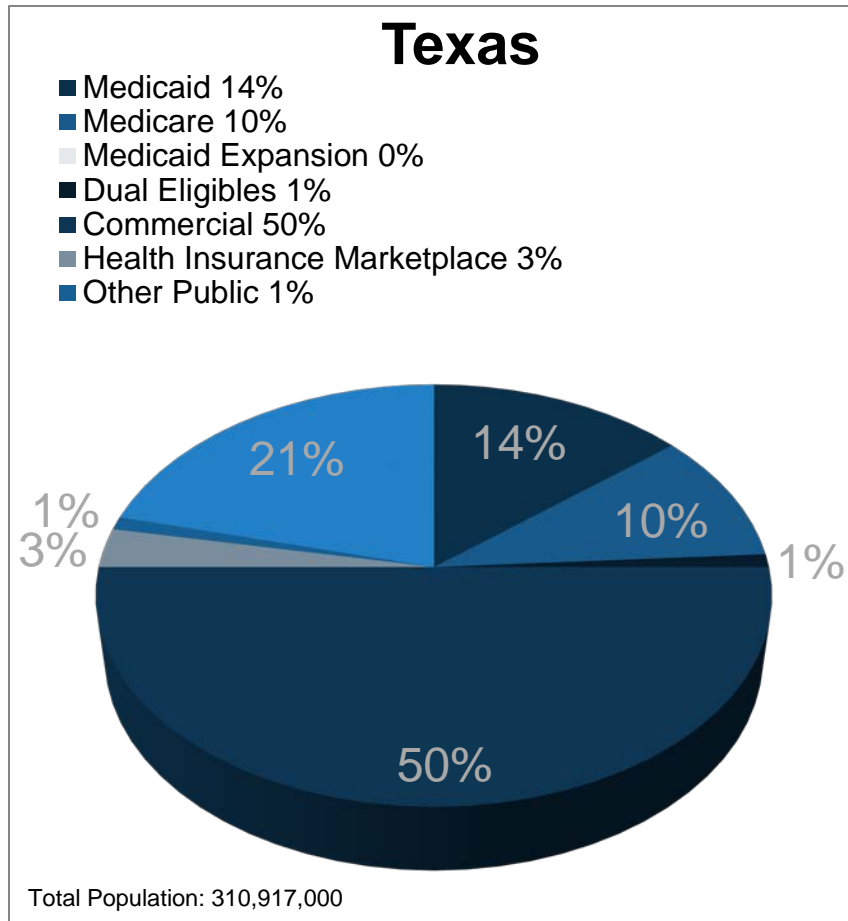
Health Care Coverage Map Of Texas

Total Population: 25,773,800
 SMI Population: 756,061



The term "beneficiaries" represents the percent of the total population enrolled.

2. Population Distribution By Payer: National vs. State



*Based on 2011-2012 data

3. Largest Health Plans In Texas By Enrollment

Plan Name	Plan Type	Enrollment*
Health Care Services Corporation A Mutual Legal Company	Commercial	4,756,080
Medicare Fee-For-Service (FFS)	Medicare	2,340,725
UnitedHealth	Commercial Administrative Services Only (ASO)	1,983,990
Coventry	Commercial ASO	1,797,165
Cigna	Commercial ASO	982,576
United Healthcare Insurance Company	Commercial	710,575
Superior Health Plan	Medicaid	633,191
Humana Insurance Company	Commercial	461,434
Medicaid FFS	Medicaid	400,591
Amerigroup	Medicaid	330,989

*Based on enrollment as of fourth quarter 2013

4. Largest Health Plans in Texas By SMI Enrollment

Plan Name	Plan Type	Enrollment*	Estimated Mental Health Enrollment
Medicare FFS	Medicare	2,340,725	203,643
Health Care Services Corporation A Mutual Legal Company	Commercial	4,756,080	33,293
Superior Health Plan	Medicaid	633,191	31,660
Medicaid FFS	Medicaid	400,591	20,030
Amerigroup	Medicaid	330,989	16,549
United Healthcare Benefits of Texas	Medicare	174,753	15,204
UnitedHealth	Commercial ASO	1,983,990	13,888
Humana Insurance Company	Medicare	148,924	12,956
Coventry	Commercial ASO	1,797,165	12,580
Community Health Choice	Medicaid	195,437	9,772

*Based on enrollment as of fourth quarter 2013

5. Texas Medicaid System Overview

Medicaid System Governance

State Medicaid Director	Kay Ghahremani
State Medicaid Director reports to	Chris Traylor, Deputy Chief Commissioner Health and Human Services Commission

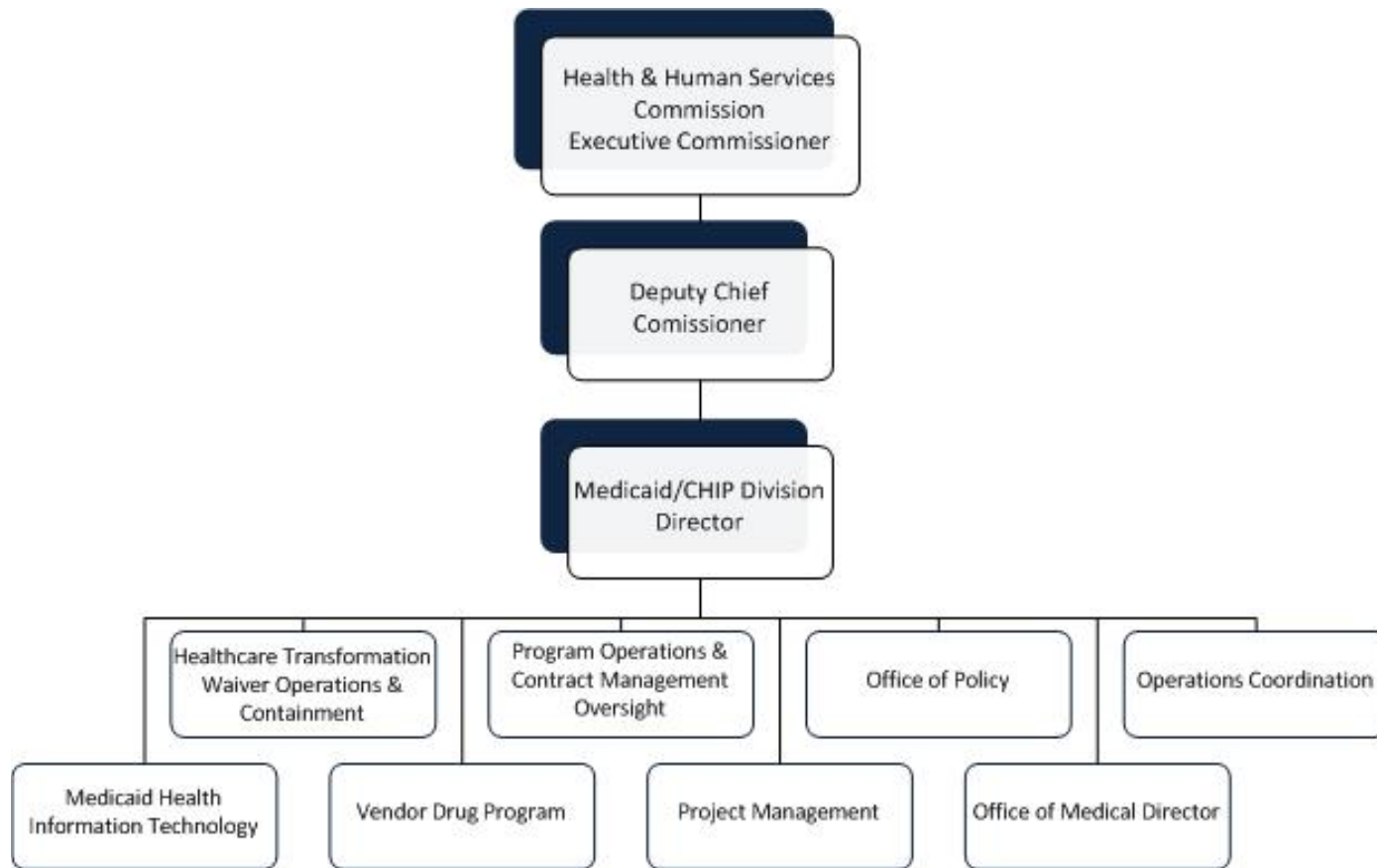
Medicaid Financial Delivery System

State participating in Medicaid expansion?	No
Is managed care mandatory for populations with SMI?	Yes
Is managed care mandatory for dual eligibles?	No
Total Medicaid population distribution	9% in FFS 91% in Managed Care
Medicaid beneficiaries with SMI: Primary service system	Because the SMI population must enroll in managed care unless they meet one of the FFS qualifications, the majority of the SMI population is served by managed care.

Medicaid Financing & Risk Arrangements: Behavioral Health

Traditional Behavioral Health Services	<ul style="list-style-type: none"> • STAR and STAR+PLUS: Included in the MCO's capitation rate • NorthSTAR Region: STAR and STAR+PLUS enrollees receive services ValueOptions
Specialty Behavioral Health Services	
Pharmaceuticals	<ul style="list-style-type: none"> • STAR: Included in the MCO's capitation rate • STAR+PLUS: Provided FFS by the state • NorthSTAR Region: For STAR enrollees included in the MCO's capitation rate, for STAR+PLUS enrollees provided FFS by the state

6. Texas Medicaid Governance



6. Texas Medicaid Governance

Name	Position	Department
Chris Traylor	Deputy Chief Commissioner	Health and Human Services Commission (HHSC)
Kay Ghahremani	Director	HHSC Medicaid/CHIP Division
Lisa Kirsch	Deputy Director	Healthcare Transformation Waiver Operations and Containment
Gary Jessee	Deputy Director	Program Operations and Contract Management Oversight
Michelle Harper	Deputy Director	Office of Policy
Alan Scantlen	Deputy Director	Operations Coordination
Ramadas Menon	Deputy Director	Medicaid Health Information Technology
Andy Vasquez	Deputy Director	Vendor Drug Program
Tania Colon	Deputy Director	Project Management
Emile Becker, M.D.	Medical Director	Office of Medical Director

7. Texas Medicaid System Benefits

Federally Mandated Services

1. Inpatient hospital services other than services in an institution for mental disease
2. Outpatient hospital services
3. Rural Health Clinic services
4. Federally Qualified Health Center services
5. Laboratory and X-ray services
6. Nursing facilities for individuals 21 and over
7. Early and Periodic Screening and Diagnosis and Treatment (EPSDT)
8. Family planning services and supplies for individuals of child-bearing age
9. Physician services
10. Medical and surgical services of a dentist
11. Home health services
12. Nurse midwife services
13. Nurse practitioner services
14. Pregnancy services, including tobacco cessation programs
15. Free standing birth centers
16. Non-emergency transportation to medical care

Texas' Optional Services

1. Prescription drugs
2. Physician assistant
3. Podiatry
4. Limited chiropractic
5. Optometry, including eyeglasses and contacts
6. Hearing instruments and related audiology
7. Mental health rehabilitation
8. Rehabilitation facility services
9. Substance use disorder treatment
10. Physical, occupational, and speech therapy
11. Targeted case management
12. Maternity service clinics

8. Texas Medicaid Financing & Service Delivery

Medicaid System Characteristics		
Characteristics	Medicaid Fee-For-Service (FFS)	Medicaid Managed Care (MC)
June 2014 Enrollment	274,437	2,793,095
SMI Enrollment	Because the SMI population must enroll in managed care unless they meet one of the FFS qualifications, the majority of the SMI population is served by managed care.	
Management	Health and Human Services Commission (HHSC)	<ul style="list-style-type: none"> STAR: Managed care organizations (MCOs) STAR+PLUS: Managed care organizations (MCOs)
Payment Model	Fee-for-service	<ul style="list-style-type: none"> STAR: Full risk capitation STAR+PLUS: Full risk capitation
Geographic Service Area	Statewide	<ul style="list-style-type: none"> STAR: Plans available regionally STAR+PLUS: Plans available regionally

9. Texas Medicaid Fee-For-Service

Fee-for-service enrollment, as of June 2014, was 274,437.

Mandatory Enrollment In FFS (excluded from managed care)

1. Medically needy program recipients
2. Children in foster care
3. Refugees
4. Medicaid recipients residing in institutions

Optional Enrollment In FFS

1. Under 21 and reside in a nursing facility
2. Disabled adult children under age 21
3. Under 21 and receiving SSI

9. Texas Medicaid Fee-For-Service

FFS Behavioral Health Benefits:

1. Prescription drugs; limited to three prescriptions a month
2. Psychiatry services
3. Assessment for substance abuse services
4. Ancillary services to diagnose or treat behavioral health conditions
5. Individual and group outpatient counseling for substance abuse
6. Medication assisted therapy for substance abuse
7. Outpatient detoxification
8. Residential detoxification
9. Residential treatment for substance abuse
10. Therapy by psychologists, licensed clinical social workers, licensed professional counselors, and licensed marriage and family therapists
11. Inpatient psychiatric care in a general acute hospital; 30 day annual limit per spell of illness
12. Mental health targeted case management (provided by the Local Mental Health Authorities)
13. Mental health rehabilitation (provided by the Local Mental Health Authorities)

10. Texas Medicaid Managed Care

- Managed care enrollment, as of June 2014, was 2,793,095.
- There are two different managed care programs for adults in Texas:
 - STAR is Texas’s acute care Medicaid program.
 - STAR+PLUS is Texas’s Medicaid program that provides acute care services, as well as long-term services and supports (LTSS) for individuals with complex needs.

Texas Medicaid Managed Care: STAR

- STAR is a statewide program, which contracts with managed care plans to provide acute care.
- The majority of the Medicaid population is mandatorily enrolled in the STAR program, about 2.3 million recipients.
- Primary care physicians (PCP) coordinate care and act as medical homes.
- Managed care plans are available on a regional basis.

Texas Medicaid Managed Care: STAR Plans By County

Region	Health Plans	Counties
Bexar	Aetna Better Health, Amerigroup, Community First Health Plans, Superior HealthPlan	Atascosa, Bandera, Bexar, Comal, Guadalupe, Kendall, Medina, Wilson
Dallas	Amerigroup, Molina Healthcare of Texas, Parkland HEALTHfirst	Collin, Dallas, Ellis, Hurt, Kaufman, Navarro, Rockwall
El Paso	El Paso First Premier Plan, Molina Healthcare of Texas, Superior HealthPlan	El Paso, Hudspeth
Harris	Amerigroup, Community Health Choice, Molina Healthcare of Texas, UnitedHealthcare Community Plan	Austin, Brazoria, Fort Bend, Galveston, Harris, Matagorda, Montgomery, Waller, Wharton
Hidalgo	Molina Healthcare of Texas, Superior HealthPlan, UnitedHealthcare Community Plan	Cameron, Duval, Hidalgo, Jim Hogg, Maverick, McMullen, Starr, Webb, Willacy, Zapata
Jefferson	Amerigroup, Community Health Choice, Molina Healthcare of Texas, UnitedHealthcare Community Plan	Chambers, Hardin, Jasper, Jefferson, Liberty, Newton, Orange, Polk, San Jacinto, Tyler, Walker
Lubbock	Amerigroup, FirstCare STAR, Superior HealthPlan	Carson, Crosby, Deaf Smith, Floyd, Garza, Hale, Hockley, Hutchinson, Lamb, Lubbock, Lynn, Potter, Randall, Swisher, Terry
Nueces	Christus Health Plan, Superior HealthPlan	Aransas, Bee, Brooks, Calhoun, Goliad, Jim Wells, Karnes, Kenedy, Kleberg, Live Oak, Nueces, Refugio, San Patricio, Victoria
Tarrant	Aetna Better Health, Amerigroup	Denton, Hood, Johnson, Parker, Tarrant, Wise

Texas Medicaid Managed Care: STAR Plans By County

Region	Health Plans	Counties
Travis	Blue Cross Blue Shield of Texas, Sendero Health Plans, Seton Health Plan, Superior HealthPlan	Bastrop, Burnet, Caldwell, Fayette, Hays, Lee, Travis, Williamson
Medicaid Rural Service Area (MRSA) – West Texas	Amerigroup, FirstCare STAR, Superior HealthPlan	Andrews, Archer, Armstrong, Bailey, Baylor, Borden, Brewster, Briscoe, Brown, Callahan, Castro, Childress, Clay, Cochran, Coke, Coleman, Collingsworth, Concho, Cottle, Crane, Crockett, Culberson, Dallam, Dawson, Dickens, Dimmit, Donley, Eastland, Ector, Edwards, Fisher, Foard, Frio, Gaines, Glasscock, Gray, Hall, Hansford, Hardeman, Hartley, Haskell, Hemphill, Howard, Irion, Jack, Jeff Davis, Jones, Kent, Kerr, Kimble, King, Kinney, Knox, La Salle, Lipscomb, Loving, Martin, Mason, McCulloch, Menard, Midland, Mitchell, Moore, Motley, Nolan, Ochiltree, Oldham, Palo Pinto, Parmer, Pecos, Presidio, Reagan, Real, Reeves, Roberts, Runnels, Schleicher, Scurry, Shackelford, Sherman, Stephens, Sterling, Stonewall, Sutton, Taylor, Terrell, Throckmorton, Tom Green, Upton, Uvalde, Val Verde, Ward, Wheeler, Wichita, Wilbarger, Winkler, Yoakum, Young, Zavala
MRSA Central Texas	Amerigroup, Right Care from Scott and White Health Plan, Superior HealthPlan	Bell, Blanco, Bosque, Brazos, Burleson, Colorado, Comanche, Coryell, DeWitt, Erath, Falls, Freestone, Gillespie, Gonzales, Grimes, Hamilton, Hill, Jackson, Lampasas, Lavaca, Leon, Limestone, Llano, Madison, McLennan, Milam, Mills, Robertson, San Saba, Somervell, Washington
MRSA Northeast Texas	Amerigroup, Superior HealthPlan	Anderson, Angelina, Bowie, Camp, Cass, Cherokee, Cooke, Delta, Fannin, Franklin, Grayson, Gregg, Harrison, Henderson, Hopkins, Houston, Lamar, Marion, Montague, Morris, Nacogdoches, Panola, Rains, Red River, Rusk, Sabine, San Augustine, Shelby, Smith, Titus, Trinity, Upshur, Van Zandt, Wood

Texas Medicaid Managed Care: STAR+PLUS

- STAR+PLUS contracts with managed care plans to provide both acute care and LTSS. It is mandatory to enroll in STAR+PLUS if an individual:
 - Is 21 or older and has a physical or mental disability, and qualifies for Medicaid; or
 - Receives STAR+PLUS home and community based services through a waiver; or
 - Is dual eligible and receives LTSS services. STAR+PLUS will only provide LTSS as Medicare is responsible for acute care services.
- Currently, about 490,000 people are enrolled in STAR+PLUS
- STAR+PLUS rolled-out to the Medicaid Rural Service Area (MRSA) on September 1, 2014 – making the program statewide. Also in September 2014, the adult developmental and intellectual disability populations also began to receive acute care services through the program. These changes were estimated to add 80,000 enrollees.
- In March 2015, the nursing facility population will also be enrolled in STAR+PLUS. In 2016, the youth developmental and intellectual disability population will also begin to receive services through the program.

Texas Medicaid Managed Care: STAR+PLUS LTSS Benefits

All STAR+PLUS Enrollees

- Day activity and health services
- Personal attendant services

STAR+PLUS Enrollees Who Qualify For HCBS Waiver Services

- In-home or out-of-home respite services
- In-home nursing services
- Emergency response services
- Home delivered meals
- Minor home modifications
- Adaptive aids and medical equipment
- Medical supplies, not covered by Medicaid
- Adult foster care
- Assisted living
- Transition assistance services- maximum of \$2,500
- Supported employment/employment assistance (added September 1, 2014)
- Cognitive rehabilitation therapy (added March 2014)
- All other services that would be covered under the HCBS waiver

Texas Medicaid Managed Care: STAR+PLUS Plans By County

Region	Health Plans	Counties
Bexar	Amerigroup, Molina Healthcare of Texas, Superior HealthPlan	Atascosa, Bandera, Bexar, Comal, Guadalupe, Kendall, Medina, Wilson
Dallas	Molina Healthcare of Texas, Superior HealthPlan	Collin, Dallas, Ellis, Hunt, Kaufman, Navarro, Rockwall
El Paso	Amerigroup, Molina Healthcare of Texas	El Paso, Hudspeth
Harris	Amerigroup, Molina Healthcare of Texas, UnitedHealthcare Community Plan	Austin, Brazoria, Fort Bend, Galveston, Harris, Matagorda, Montgomery, Waller, Wharton
Hidalgo	Cigna-HealthSpring, Molina Healthcare of Texas, Superior HealthPlan	Cameron, Duval, Hidalgo, Jim Hogg, Maverick, McMullen, Starr, Webb, Willacy, Zapata
Jefferson	Amerigroup, Molina Healthcare of Texas, UnitedHealthcare Community Plan	Chambers, Hardin, Jasper, Jefferson, Liberty, Newton, Orange, Polk, San Jacinto, Tyler, Walker
Lubbock	Amerigroup, Superior HealthPlan	Carson, Crosby, Deaf Smith, Floyd, Garza, Hale, Hockley, Hutchinson, Lamb, Lubbock, Lynn, Potter, Randall, Swisher, Terry
Nueces	Superior HealthPlan, UnitedHealthcare Community Plan	Aransas, Bee, Brooks, Calhoun, Goliad, Jim Wells, Karnes, Kenedy, Kleberg, Live Oak, Nueces, Refugio, San Patricio, Victoria
Tarrant	Amerigroup, Cigna-HealthSpring	Denton, Hood, Johnson, Parker, Tarrant, Wise
Travis	Amerigroup, UnitedHealthcare Community Plan	Bastrop, Burnet, Caldwell, Fayette, Hays, Lee, Travis, Williamson

Texas Medicaid Managed Care: STAR+PLUS Plans By County

Region	Health Plans	Counties
MRSA – West Texas	Amerigroup, Superior HealthPlan	Andrews, Archer, Armstrong, Bailey, Baylor, Borden, Brewster, Briscoe, Brown, Callahan, Castro, Childress, Clay, Cochran, Coke, Coleman, Collingsworth, Concho, Cottle, Crane, Crockett, Culberson, Dallam, Dawson, Dickens, Dimmit, Donley, Eastland, Ector, Edwards, Fisher, Foard, Frio, Gaines, Glasscock, Gray, Hall, Hansford, Hardeman, Hartley, Haskell, Hemphill, Howard, Irion, Jack, Jeff Davis, Jones, Kent, Kerr, Kimble, King, Kinney, Knox, La Salle, Lipscomb, Loving, Martin, Mason, McCulloch, Menard, Midland, Mitchell, Moore, Motley, Nolan, Ochiltree, Oldham, Palo Pinto, Parmer, Pecos, Presidio, Reagan, Real, Reeves, Roberts, Runnels, Schleicher, Scurry, Shackelford, Sherman, Stephens, Sterling, Stonewall, Sutton, Taylor, Terrell, Throckmorton, Tom Green, Upton, Uvalde, Val Verde, Ward, Wheeler, Wichita, Wilbarger, Winkler, Yoakum, Young, Zavala
MRSA- Central Texas	Superior HealthPlan, UnitedHealthcare Community Plan	Bell, Blanco, Bosque, Brazos, Burleson, Colorado, Comanche, Coryell, DeWitt, Erath, Falls, Freestone, Gillespie, Gonzales, Grimes, Hamilton, Hill, Jackson, Lampasas, Lavaca, Leon, Limestone, Llano, Madison, McLennan, Milam, Mills, Robertson, San Saba, Somervell, Washington
MRSA- Northeast Texas	Cigna-HealthSpring, UnitedHealthcare Community Plan	Anderson, Angelina, Bowie, Camp, Cass, Cherokee, Cooke, Delta, Fannin, Franklin, Grayson, Gregg, Harrison, Henderson, Hopkins, Houston, Lamar, Marion, Montague, Morris, Nacogdoches, Panola, Rains, Red River, Rusk, Sabine, San Augustine, Shelby, Smith, Titus, Trinity, Upshur, Van Zandt, Wood

Texas Medicaid Managed Care: NorthSTAR

- NorthSTAR is a behavioral health carve-out from STAR and STAR+PLUS health plans that provides services to individuals enrolled in the Dallas Medicaid managed care region. The program is authorized through a 1915(b) waiver.
- The Dallas managed care region includes: Dallas, Collin, Ellis, Hunt, Kaufman, Navarro (excludes rural areas), and Rockwall counties.
- ValueOptions is a risk-based Prepaid Inpatient Health Plan (PIHP) that receives blended funding from state and local agencies. 88% of ValueOptions funding must go directly towards direct service claims.
- NorthSTAR provides services to both the Medicaid and uninsured populations. Any individual who loses their Medicaid eligibility can continue receiving services, as well as any individual making up to 200% of the FPL, if they meet the diagnosis for the state mental health population or have a chemical dependency diagnosis.

Texas Medicaid Managed Care: NorthSTAR Behavioral Health Benefits

Prescription drugs are not included in the NorthSTAR capitation rate, but are covered by the MCOs for STAR enrollees and the state for STAR+PLUS enrollees.

Mental Health Benefits

1. Assessment
2. Individual and group therapy
3. Psychological testing
4. Medication management (drugs are still covered by the physical health MCO)
5. Health education
6. General hospital
7. Freestanding psychiatric hospitals
8. Subacute inpatient
9. In-home services
10. Targeted/focused case management
11. 23-hour observation bed emergency services

Substance Abuse Benefits

1. Assessment
2. Individual and group therapy
3. Intensive outpatient programs
4. Partial hospitalization programs
5. Medication management
6. Outpatient detoxification
7. Special female services with child care
8. Medically managed residential detox
9. Residential rehabilitation

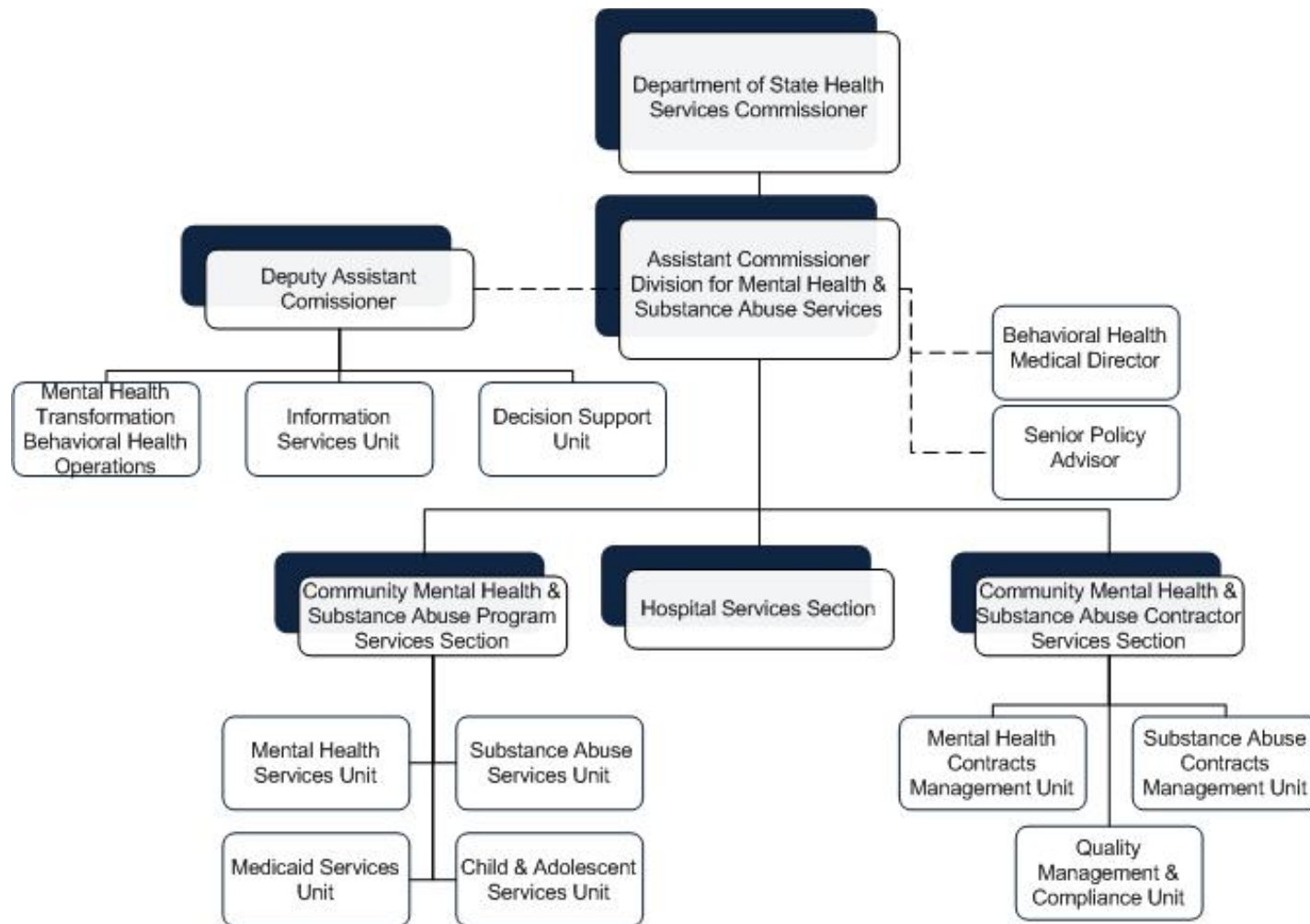
SMI Population Benefits

1. Rehabilitative services
2. Partial hospitalization programs
3. Community support services
4. Service coordination/case management
5. Supported housing
6. Supported employment
7. ACT teams

11. Texas Medicaid Medical & Health Home Initiatives

- In 2013, the Texas State Legislature charged HHSC with creating two health home pilot programs for individuals with serious mental illness and one other chronic conditions.
- As of January 2015, there are no known plans to implement the health home pilots.

12. Texas State Mental Health & Addiction Treatment Department Governance



12. Texas State Mental Health & Addiction Treatment Department Governance

Name	Department	Position
David Lakey, MD	Commissioner	Department of State Health Services
Lauren Lacefield Lewis	Deputy Assistant Commissioner	Division for Mental Health and Substance Abuse
James Baker, MD	Medical Director	Behavioral Health
Jennifer D. Miller	Manager	Contracts Management Unit

13. Texas State Psychiatric Institutions

Institution Name	Location	Type	Beds	Year to Date Admissions*	Year to Date Discharges*
North Texas State Hospital	Wichita and Vernon	Vernon-Forensic Wichita-Civil	640	1,965	1,976
Austin State Hospital	Austin	Civil	314	229	3,192
Big Spring State Hospital	Big Spring	Civil	200	709	689
El Paso Psychiatric Center	El Paso	Civil	77	1,000	992
Kerrville State Hospital	Kerrville	Forensic	202	80	72
Rusk State Hospital	Rusk	Forensic/Civil	330	617	582
San Antonio State Hospital	San Antonio	Civil	302	1,668	1,658
Terrell State Hospital	Terrell	Civil	316	2,282	2,330
Total			2,381	8,550	11,491

* Year to date admissions and discharges as of midnight November 30, 2013

14. Texas Accountable Care Organizations (ACOs)

Medicare Shared Savings Program

1. Accountable Care Coalition of Greater Houston, LLC.
2. Accountable Care Coalition of North Texas, LLC.
3. Accountable Care Coalition of Texas, Inc.
4. ACO Providers
5. Amarillo Legacy Medical ACO
6. American Rural ACO
7. Baylor Scott and White Quality Alliance
8. BHS Accountable Care, LLC
9. Buena Vida y Salud, LLC
10. Covenant Health Partners, Inc.
11. Essential Care Partners II, LLC
12. Genesis Accountable Physician Network, LLC
13. Integrated ACO, LLC
14. Medical Clinic of North Texas, PLLC
15. Memorial Hermann Accountable Care Organization
16. Meridian Health Systems ACO Corporation
17. Methodist Patient Centered ACO
18. Physicians Accountable Care Solutions, LLC
19. Physicians ACO
20. PQN - Central Texas, LLC
21. Premier Patient Healthcare, LLC
22. RGV ACO Health Providers, LLC
23. Rio Grande Valley Health Alliance, LLC
24. Scott and White Healthcare Walgreens Well Network, LLC
25. Seton Health Alliance, Inc.
26. St. Joseph Health Partners ACO
27. Sunshine ACO, LLC
28. SW Provider Partners, LLC
29. Texoma ACO, LLC
30. UPSA ACO, LLC
31. USMM Accountable Care Partners, LLC
32. UT Southwestern Accountable Care Network

14. Texas Accountable Care Organizations (ACOs)

Commercial ACOs

Commercial ACOs	
ACO	Commercial Insurer
Austin Regional Clinic	Blue Cross Blue Shield of Texas
Catalyst Health Network	Blue Cross Blue Shield of Texas
HealthTexas Provider Network Collaborative Accountable Care (CAC)	Cigna
Kelsey-Seybold Collaborative Accountable Care (CAC)	Cigna
Medical Clinic of North Texas Collaborative Accountable Care (CAC)	Cigna
Memorial Hermann Accountable Care Organization (MHACO)	Blue Cross Blue Shield of Texas
Memorial Hermann Health System	Aetna
North Texas CIN	Cigna
Saint Francis HealthCare Partners ACO	Cigna
Southwest Provider Accountable Care	Blue Cross Blue Shield of Texas
St. Luke's-Renaissance Collaborative Accountable Care (CAC)	Cigna
Texas Health Resources	Aetna
Village Health Partners	Cigna

15. Texas Health Care Reform Initiatives

Medicaid Expansion	
Choose to participate in expansion?	No
Medicaid Eligibility Income Limit for Childless Adults	<ul style="list-style-type: none"> • 15% of FPL for parents • 0% of FPL for other adults
Specific Legislation Enacted	None

Health Insurance Marketplace	
Type of Marketplace	Federal
Individual Enrollment Contact	www.healthcare.gov
	1-800-318-2596
Small Business Enrollment Contact	www.healthcare.gov/small-businesses
	1-800-706-7893

16. Texas Health Insurance Marketplace Plans

Individual Market

- Aetna
- Ambetter from Superior Health Plan
- Blue Cross Blue Shield of Texas
- Cigna Healthcare
- Community Health Choice
- CommunityFirst
- FirstCare Health Plans
- Humana Health Plan of Texas, Inc.
- Humana Insurance Company
- Molina Marketplace
- Scott and White Health Plans
- Sendero Health Plans

Small Group Market

- Blue Cross Blue Shield of Texas
- FirstCare Health Plans

17. Texas Essential Health Benefit Benchmark Plan

Plan Type	Plan from largest small group product, Preferred Provider Organization
Issuer Name	Blue Cross Blue Shield of Texas
Plan Name	BestChoice PPO
Supplemented Categories (Supplementary Plan Type)	<ul style="list-style-type: none">• Pediatric Oral (FEDVIP)• Pediatric Vision (FEDVIP)
Habilitative Services Defined by State	No; when the benchmark plan and state do not define habilitative services the benefit is covered using the federal definition: provides parity that are similar in scope, amount, and duration to benefits covered for rehabilitative services.
Biologically Based Mental Illness	Covered the same as any other medical benefit as described in the 2008 Mental Health Parity and Addiction Equity Act

17. Texas Essential Health Benefit Benchmark Plan

Benefit	Limit on Service	Exclusions (apply to all benefits)	
Non-Biologically Based Mental Illness	Mental/Behavioral Health Outpatient Services	<ul style="list-style-type: none"> • 25 visits per year • No limit on treatment for autism or acquired brain injuries 	None
	Mental/Behavioral Health Inpatient Services	10 days per year	
	Substance Abuse Disorder Outpatient Services	Three series of treatment per lifetime, includes inpatient series of treatment	
	Substance Abuse Disorder Inpatient Services	Three series of treatment per lifetime, includes outpatient series of treatment	

Sources

3. Largest Health Plans In Texas By Enrollment

- The Centers for Medicare and Medicaid Services. (2012). Medicare Geographic Variation State/County Table-All Beneficiaries. Retrieved August 14, 2014 from http://www.cms.gov/Research-Statistics-Data-and-Systems/Statistics-Trends-and-Reports/Medicare-Geographic-Variation/GV_PUF.html
- Health Plans USA. (2013). Subscription Database. Available at <https://www.mfamarketdata.com/login.aspx>
- Texas Health and Human Services Commission. (2014, February). Confirmed Eligibles Report February 2014. Retrieved August 14, 2014 from http://www.hhsc.state.tx.us/medicaid/about/reports/confirmed_eligible/2014/02.pdf
- Texas Health and Human Services Commission. (2014, February). Preliminary Medicaid Enrollment by Month: September 2011-February 2014. Retrieved August 14, 2014 from <http://www.hhsc.state.tx.us/medicaid/about/statistics.asp>

4. Largest Health Plans in Texas By SMI Enrollment

- The Centers for Medicare and Medicaid Services. (2012). Medicare Geographic Variation State/County Table-All Beneficiaries. Retrieved August 14, 2014 from http://www.cms.gov/Research-Statistics-Data-and-Systems/Statistics-Trends-and-Reports/Medicare-Geographic-Variation/GV_PUF.html
- Health Plans USA. (2013). Subscription Database. Available at <https://www.mfamarketdata.com/login.aspx>

5. Texas Medicaid System Overview

- Compiled from information found throughout the profile.

6. Texas Medicaid Governance

- Texas Health and Human Services Commission. (2013, September). Health and Human Services Commission. Retrieved August 14, 2014 from http://www.hhsc.state.tx.us/about_hhsc/OrgChart/HHS/HHSC_OrgChart.html
- Texas Health and Human Services Commission. (2013, September). Health and Human Services Commission. Retrieved August 14, 2014 from http://www.hhsc.state.tx.us/about_hhsc/OrgChart/HHS/HHSC_OrgChart.html

Sources

7. Texas Medicaid System Benefits

- The Centers for Medicare and Medicaid Services. Medicaid Benefits. Retrieved August 14, 2014 from <http://www.medicaid.gov/Medicaid-CHIP-Program-Information/By-Topics/Benefits/Medicaid-Benefits.html>
- Texas Health and Human Services Commission. (2013, January 31). Texas Medicaid and CHIP in Perspective: Ninth Edition - January 2013: Chapter 6 Medicaid Benefits. Retrieved August 14, 2014 from http://www.hhsc.state.tx.us/medicaid/about/PB/7_PB%209th_ed_Chapter6.pdf

8. Texas Medicaid Financing & Service Delivery

- Texas Health and Human Services Commission. (2014, February). Confirmed Eligibles Report February 2014. Retrieved August 14, 2014 from http://www.hhsc.state.tx.us/medicaid/about/reports/confirmed_eligible/2014/02.pdf
- Texas Health and Human Services Commission. (2014, February). Preliminary Medicaid Enrollment by Month: September 2011-February 2014. Retrieved August 14, 2014 from <http://www.hhsc.state.tx.us/medicaid/about/statistics.asp>
- Texas Health and Human Services Commission. (2013, January 31). Texas Medicaid and CHIP in Perspective: Ninth Edition - January 2013: Chapter 7 Managed Care. Retrieved August 14, 2014 from http://www.hhsc.state.tx.us/medicaid/about/PB/8_PB_9th_ed_Chapter7.pdf
- Texas Health and Human Services Commission. (2011, September). STAR Service Areas. Retrieved August 14, 2014 from http://www.hhsc.state.tx.us/medicaid/managed-care/star/STAR_Service_Areas.pdf
- Texas Health and Human Services Commission. (2014, May 9). HHSC Cancels Xerox Medicaid Contract. Retrieved August 14, 2014 from <http://www.hhsc.state.tx.us/news/release/2014/050914-Xerox-Medicaid.shtml>
- In order to calculate the FFS population two reports had to be used, one that gave the total number of Medicaid recipients and one that gave the number of recipients in Medicaid managed care. These numbers were subtracted to find the number of FFS recipients.

Sources

9. Texas Medicaid Fee-For-Service

- Texas Health and Human Services Commission. (2014, February). Confirmed Eligibles Report February 2014. Retrieved August 14, 2014 from http://www.hhsc.state.tx.us/medicaid/about/reports/confirmed_eligible/2014/02.pdf
- Texas Health and Human Services Commission. (2014, February). Preliminary Medicaid Enrollment by Month: September 2011-February 2014. Retrieved August 14, 2014 from <http://www.hhsc.state.tx.us/medicaid/about/statistics.asp>
- Texas Health and Human Services Commission. (2011, December 12). Texas Healthcare Transformation and Quality Improvement Program. Retrieved August 14, 2014 from <http://www.medicaid.gov/Medicaid-CHIP-Program-Information/By-Topics/Waivers/1115/downloads/tx/Healthcare-Transformation-and-Quality-Improvement-Program/tx-healthcare-transformation-stc-12122011-09302016-2.pdf>
- In order to calculate the FFS population two reports had to be used, one that gave the total number of Medicaid recipients and one that gave the number of recipients in Medicaid managed care. These numbers were subtracted to find the number of FFS recipients.

10. Texas Medicaid Managed Care

- Texas Health and Human Services Commission. (2013, January 31). Texas Medicaid and CHIP in Perspective: Ninth Edition - January 2013: Chapter 7 Managed Care. Retrieved August 14, 2014 from http://www.hhsc.state.tx.us/medicaid/about/PB/8_PB_9th_ed_Chapter7.pdf
- Texas Health and Human Services Commission. STAR: Client Information. Retrieved August 14, 2014 from <http://www.hhsc.state.tx.us/medicaid/managed-care/star/client-information.shtml>

Texas Medicaid Managed Care Program: STAR

- Texas Health and Human Services Commission. (2013, January 31). Texas Medicaid and CHIP in Perspective: Ninth Edition - January 2013: Chapter 7 Managed Care. Retrieved August 14, 2014 from http://www.hhsc.state.tx.us/medicaid/about/PB/8_PB_9th_ed_Chapter7.pdf
- Texas Health and Human Services Commission. STAR: Client Information. Retrieved August 14, 2014 from <http://www.hhsc.state.tx.us/medicaid/managed-care/star/client-information.shtml>

Sources

Texas Medicaid Managed Care Program: STAR Service Areas

- Texas Health and Human Services Commission. (2011, September). STAR Service Areas. Retrieved August 14, 2014 from http://www.hhsc.state.tx.us/medicaid/managed-care/star/STAR_Service_Areas.pdf

Texas Medicaid Managed Care Program: STAR Plans By County

- Texas Health and Human Services Commission. (2011, September). STAR Service Areas. Retrieved August 14, 2014 from http://www.hhsc.state.tx.us/medicaid/managed-care/star/STAR_Service_Areas.pdf
- Texas Health and Human Services Commission. (2011, July). Medicaid Rural Service Area (MRSA) Regions. Retrieved August 14, 2014 from <http://www.hhsc.state.tx.us/medicaid/managed-care/mmc/STAR-MRSA-map.pdf>

Texas Medicaid Managed Care Program: STAR+PLUS

- Texas Health and Human Services Commission. (2014, June). STAR+PLUS Handbook. Retrieved August 14, 2014 from <http://www.dads.state.tx.us/handbooks/sph/>

Texas Medicaid Managed Care Program: STAR+PLUS LTSS Benefits

- Texas Health and Human Services Commission. (2013, January 31). Texas Medicaid and CHIP in Perspective: Ninth Edition - January 2013: Chapter 6 Medicaid Benefits. Retrieved August 14, 2014 from http://www.hhsc.state.tx.us/medicaid/about/PB/7_PB%209th_ed_Chapter6.pdf
- Texas Health and Human Services Commission. Texas Medicaid and CHIP: STAR+PLUS Expansion. Retrieved August 14, 2014 from <http://www.hhsc.state.tx.us/medicaid/managed-care/mmc/starplus-expansion/>

Texas Medicaid Managed Care Program: Current STAR+PLUS Counties

- Texas Health and Human Services Commission. (2011, August). STAR+PLUS Service Areas. Retrieved August 14, 2014 from <http://www.hhsc.state.tx.us/medicaid/managed-care/starplus/Map.pdf>

Sources

Texas Medicaid Managed Care Program: STAR+PLUS Plans By County

- Texas Health and Human Services Commission. (2011, August). STAR+PLUS Service Areas. Retrieved August 14, 2014 from <http://www.hhsc.state.tx.us/medicaid/managed-care/starplus/Map.pdf>
- Texas Health and Human Services Commission. (2013, October). STAR+PLUS Medicaid Rural Service Area (MRSA) Regions. Retrieved August 14, 2014 from <http://www.hhsc.state.tx.us/medicaid/managed-care/mmc/STARPLUS-MRSA-map.pdf>

Texas Medicaid Managed Care Program: NorthSTAR

- Texas Health and Human Services Commission. (2011, October). NorthSTAR Service Delivery System. Retrieved August 14, 2014 from <https://www.dshs.state.tx.us/mhsa/northstar/northstar.shtm>
- Texas Health and Human Services Commission. (2014, May). Texas North Star Behavioral Health (TX-14). Retrieved August 14, 2014 from http://www.medicaid.gov/Medicaid-CHIP-Program-Information/By-Topics/Waivers/Waivers_faceted.html
- ValueOptions. (June, 2014). NorthSTAR Enrollee Handbook and Provider Directory. Retrieved August 14, 2014 from http://www.valueoptions.com/northstar/members/resources/NorthSTAR_Provider_Directory.pdf
- Texas Health and Human Services Commission. (2013, September). NTBHA Contract 2013-2015. Retrieved August 14, 2014 from <https://www.dshs.state.tx.us/mhsa/northstar/contract13-15/>

Texas Medicaid Managed Care Program: NorthSTAR Behavioral Health Benefits

- ValueOptions. (June, 2014). NorthSTAR Enrollee Handbook and Provider Directory. Retrieved August 14, 2014 from http://www.valueoptions.com/northstar/members/resources/NorthSTAR_Provider_Directory.pdf

Sources

11. Texas Medicaid Medical & Health Home Initiatives

- Texas Health and Human Services Commission. (2013, December). Texas Patient-Centered Medical Home Report. Retrieved August 14, 2014 from <http://www.hhsc.state.tx.us/reports/2013/SB7-Medicaid-Patient-Centered.pdf>

12. Texas State Mental Health & Addiction Treatment Department Governance

- Texas Department of State Health Services. (2013, July). Mental Health and Substance Abuse Division. Retrieved August 14, 2014 from <http://www.dshs.state.tx.us/orgchart/mhsa.shtm>
- Texas Department of State Health Services. (2013, July). Mental Health and Substance Abuse Division. Retrieved August 14, 2014 from <http://www.dshs.state.tx.us/orgchart/mhsa.shtm>

13. Texas State Psychiatric Institutions

- Texas Department of State Health Services. (2014, March 14). State Hospitals. Retrieved August 14, 2014 from <http://www.dshs.state.tx.us/mhhospitals/default.shtm>

14. Texas Accountable Care Organizations (ACOs)

- OPEN MINDS Database

15. Texas Health Care Reform Initiatives

- The Centers for Medicare and Medicaid Services. (2014, April 1). State Medicaid and CHIP Income Eligibility Standards. Retrieved August 14, 2014 from <http://www.medicare.gov/AffordableCareAct/Medicaid-Moving-Forward-2014/Downloads/Medicaid-and-CHIP-Eligibility-Levels-Table.pdf>
- OPEN MINDS Executive Briefings. (2014, April 5). PPACA Created A New U.S. Health & Human Service Map. Retrieved August 14, 2014 from <http://www.openminds.com/market-intelligence/executive-briefings/ppaca-created-new-state-map.htm>
- United States Government. (2014). Healthcare.gov. Retrieved August 14, 2014 from <https://www.healthcare.gov/>

Sources

16. Texas Health Insurance Marketplace Plans

- Thierer, C. (2014, June). QHP Landscape Individual Market Medical. Retrieved August 14, 2014 from <https://data.healthcare.gov/dataset/QHP-Landscape-Individual-Market-Medical/b8in-sz6k>
- Thierer, C. (2014, June). QHP Landscape SHOP Market Medical. Retrieved August 14, 2014 from <https://data.healthcare.gov/dataset/QHP-Landscape-SHOP-Market-Medical/ss3e-3mza>

17. Texas Essential Health Benefit Benchmark Plan

- State of Texas. (2014). Texas EHB Benchmark Plan. Retrieved August 14, 2014 from <http://www.cms.gov/CCIIO/Resources/Data-Resources/Downloads/texas-ehb-benchmark-plan.pdf>
- United States Federal Government. (2014). Part 156—Health Insurance Issuer Standards Under The Affordable Care Act, Including Standards Related to Exchanges. Retrieved August 14, 2014 from <http://www.ecfr.gov/cgi-bin/retrieveECFR?gp=1&SID=6c752d6b5356aead0dc3b5e7644d01a6&ty=HTML&h=L&r=PART&n=pt45.1.156>
- State of Texas. (2014). Texas EHB Benchmark Plan. Retrieved August 14, 2014 from <http://www.cms.gov/CCIIO/Resources/Data-Resources/Downloads/texas-ehb-benchmark-plan.pdf>