

Florida Behavioral System Market Profile

This resource is provided for informational purposes only and is not intended as reimbursement or legal advice. You should seek independent, qualified professional advice to ensure that your organization is in compliance with the complex legal and regulatory requirements governing health care services, and that treatment decisions are made consistent with the applicable standards of care.

Except as otherwise indicated, the information provided is accurate to the best of Otsuka's knowledge as of June 2018. PsychU provides this information for your convenience. In order to obtain the most up-to-date information about a state or its programs, please contact the organization listed within this state's Mental Health System Guidebook.

Behavioral Health Market Profile Overview

A. [Executive Summary](#)

1. [Physical Health Care Coverage Map](#)
2. [Medicaid System Overview](#)
3. [Medicaid Care Coordination Initiatives](#)
4. [Behavioral Health Safety-Net Delivery System: Overview](#)
5. [Behavioral Health Safety-Net Delivery System](#)
6. [Behavioral Health Safety-Net Delivery System: Managing Entities Map](#)
7. [Behavioral Health Safety-Net Delivery System: Managing Entities](#)

B. [Health Financing System Overview](#)

1. [Population Demographics](#)
2. [Population Centers](#)
3. [Population Distribution By Payer: National Vs. State](#)
4. [Largest Health Plans By Enrollment](#)
5. [Largest Health Plans By Estimated SMI Enrollment](#)
6. [Health Insurance Marketplace](#)

C. [Medicaid Administration, Governance & Operations](#)

1. [Medicaid Governance Organization Chart](#)
2. [Medicaid Governance: Key Leadership](#)
3. [Medicaid Expansion Status](#)
4. [Medicaid Program Benefits](#)

D. [Medicaid Financing & Service Delivery System](#)

1. [Medicaid Financing & Service Delivery System](#)
2. [Medicaid Service Delivery System Enrollment By Eligibility Group](#)
3. [Medicaid FFS Program: Overview](#)
4. [Medicaid FFS Program: Behavioral Health Benefits](#)
5. [Medicaid FFS Program: SMI Population](#)
6. [Medicaid Managed Care Program: Overview](#)
7. [Medicaid Managed Care Program: Managed Medical Assistance](#)
8. [Medicaid Managed Care Program: Managed Care Regions](#)
9. [Medicaid Managed Care Program: MMA Health Plans By Region](#)
10. [Medicaid Managed Care Program: MMA Specialty Health Plans By Region](#)
11. [Medicaid Managed Care Program: MMA SMI Specialty Plan](#)
12. [Medicaid Managed Care Program: Long-Term Care Program](#)
13. [Medicaid Managed Care Program: LTC Plans By Region](#)
14. [Medicaid Managed Care Program: Behavioral Health Benefits](#)
15. [Medicaid Managed Care Program: SMI Population](#)
16. [Medicaid Program: Care Coordination Initiatives](#)
17. [Medicaid Program: Demonstration & Care Management Waiver](#)
18. [Medicaid Program: Section 1915 \(c\) HCBS Waivers](#)
19. [Medicaid Program: New Initiatives](#)
20. [Medicaid Managed Care Program: Contract Awards By Region](#)
21. [Medicaid Managed Care Program: Specialty Plan Contract Awards By Region](#)

E. [State Behavioral Health Administration & Finance System](#)

1. [Substance Abuse & Mental Health Office Governance: Organization Chart](#)
2. [Substance Abuse & Mental Health Office Governance: Key Leadership](#)
3. [Mental Health & Addiction Hospital Bed Distribution](#)
4. [State Psychiatric Institutions](#)
5. [State Psychiatric Institutions: Catchment Areas](#)

F. [State Behavioral Health Stakeholder Organizations](#)

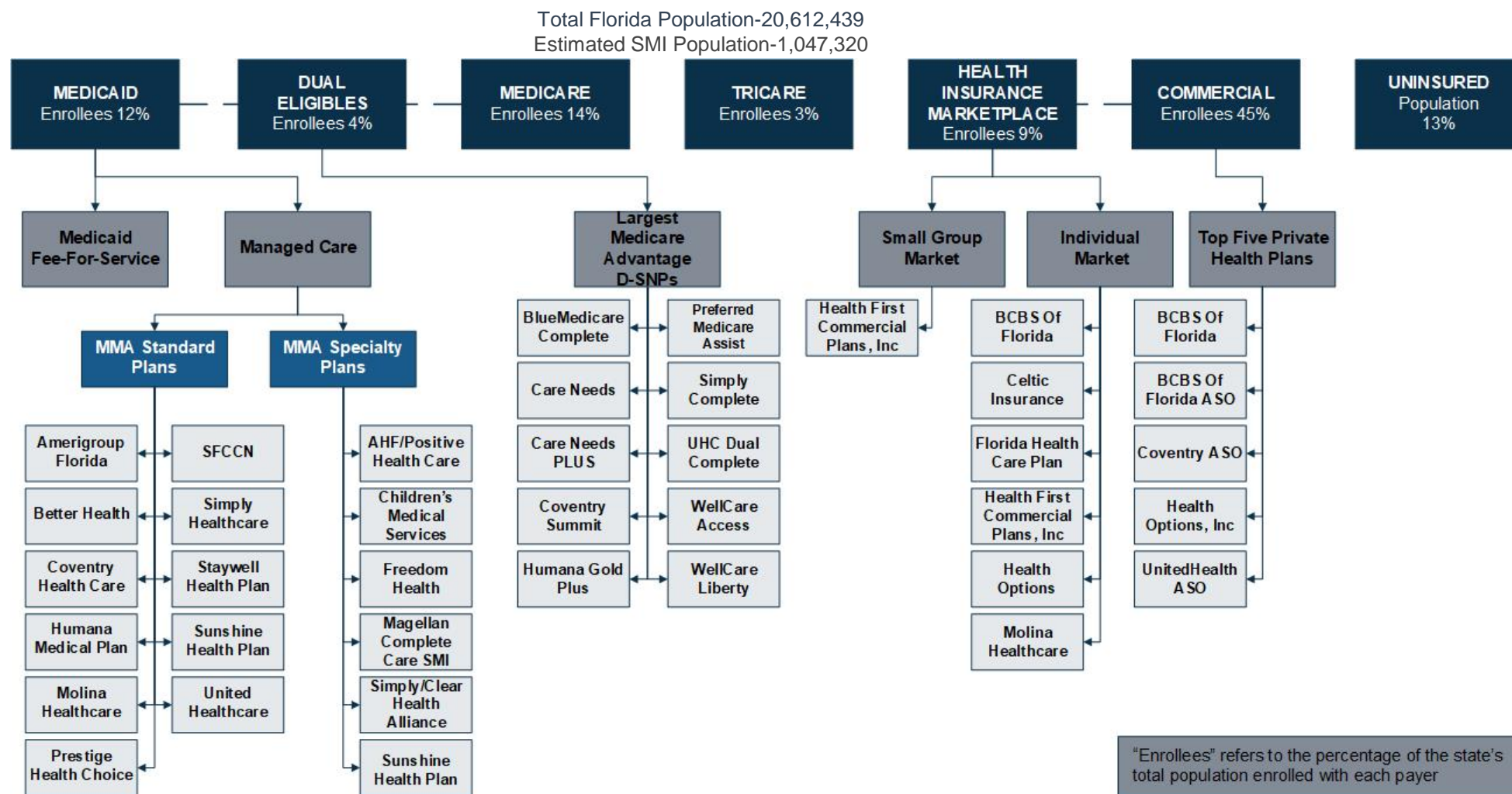
1. [Accountable Care Organizations](#)
2. [Accountable Care Organizations: Continued](#)

G. [Appendices](#)

1. [Acronym Legend](#)
2. [Glossary Of Terms](#)
3. [Sources](#)

A. Executive Summary

A.1. Florida Physical Health Care Coverage Map



A.2. Medicaid System Overview

Medicaid Financial Delivery System Enrollment	
Total Medicaid population distribution	<ul style="list-style-type: none"> As of April 2018: 8% in fee-for-service (FFS), 92% in managed care
SMI population inclusion in managed care	<ul style="list-style-type: none"> Florida does not specifically preclude individuals with SMI from enrolling in managed care, therefore, the majority of the SMI population is enrolled in managed care A specialty health plan for individuals with SMI is available in most regions Estimated 23% of population in FFS, 77% in managed care
Dual eligible population inclusion in managed care	<ul style="list-style-type: none"> Dual eligibles enrolled in D-SNPs are excluded from managed care Estimated 46% of population in FFS, 54% in managed care

Medicaid Financing & Risk Arrangements: Behavioral Health		
Service Type	FFS Population	Managed Care Population
Traditional behavioral health	Covered FFS by the state	Included in the health plan's capitation
Specialty behavioral health	Covered FFS by the state	Included in the health plan's capitation
Pharmaceuticals	Covered FFS by the state	Included in the health plan's capitation
Long-term services & supports (LTSS)	Delivered by standalone plans under the Long-Term Care program	Delivered by standalone plans under the Long-Term Care program

A.3. Medicaid Care Coordination Initiatives

Medicaid Care Coordination Entities For Chronic Care Populations (Including SMI)		
Care Coordination Entity	Active Program	Description
Managed Care Health Plan	✓	Health plans are responsible for care coordination
Primary Care Case Management (PCCM)		None
Accountable Care Organization (ACO) Program		None
Affordable Care Act (ACA) Model Health Home		None
Patient-Centered Medical Home (PCMH)		No statewide program, but health plans may link provider organization incentive payments to PCMH accreditation

A.4. Behavioral Health Safety-Net Delivery System Overview

State Agency Responsible For Uninsured Citizens & Delivery System Model

Physical Health Services

- County health departments, which are state-local partnerships between the Florida Department Of Health and the county governing boards, provide physical health care services to the safety-net population

Mental Health Services

- The Florida Department Of Children & Families, Office Of Substance Abuse & Mental Health (OSAMH) administers the mental health program for the safety-net population; OSAMH contracts with seven agencies that manage delivery of care through local provider networks

Addiction Treatment Services

- OSAMH also administers the addiction treatment services program for the safety-net population through contracts with the same seven agencies that manage mental health services

A.5. Behavioral Health Safety-Net Delivery System

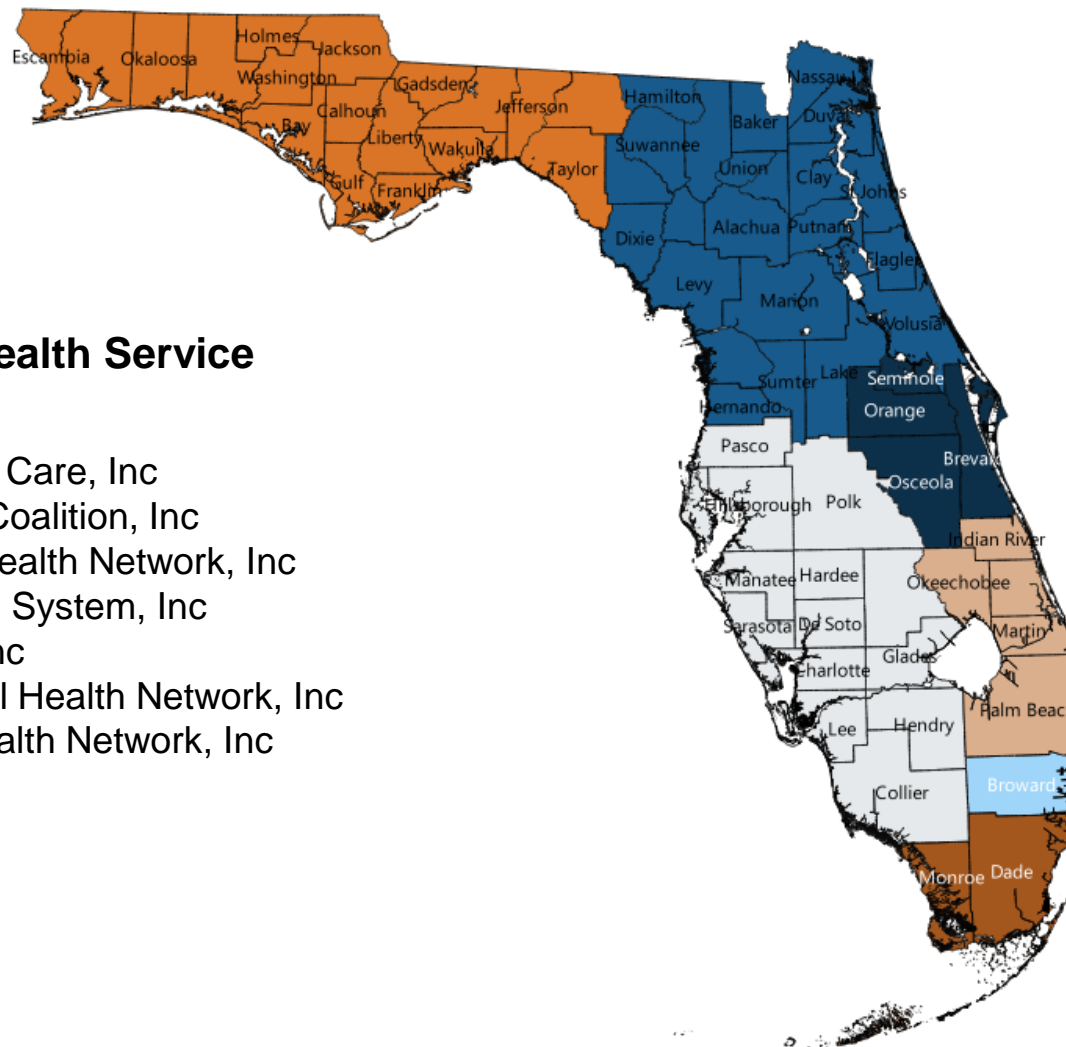
- The Office Of Substance Abuse & Mental Health (OSAMH) within the Florida Department Of Children & Families administers the mental health and addiction treatment services program for the safety-net population
- Using state and federal funding, OSAMH contracts with seven agencies, called managing entities, that manage delivery of care through local provider networks
- Delivery of services is divided among 20 circuits that correspond to the state judicial court circuits
 - Only one managing entity operates within each circuit, with the exception of Circuit 3, which has two managing entities
 - A managing entity may be responsible for one or more circuits
- Each managing entity must conduct a needs assessment every three years to determine the optimal array of behavioral health services for its communities
- For program regulation and oversight, the state is divided into six regions, each overseen by an OSAMH regional director
 - The six regions correspond with the Florida Department Of Children & Families administrative divisions, and do not necessarily align with the managing entities' areas of responsibility
 - One or more managing entities may operate within each region

A.6. Behavioral Health Safety-Net Delivery System

Managing Entities Map

Community Behavioral Health Service Managing Entities

- Big Bend Community Based Care, Inc
- Broward Behavioral Health Coalition, Inc
- Central Florida Behavioral Health Network, Inc
- Central Florida Cares Health System, Inc
- Lutheran Services Florida, Inc
- Southeast Florida Behavioral Health Network, Inc
- South Florida Behavioral Health Network, Inc



A.7. Behavioral Health Safety-Net Delivery System

Managing Entities

Managing Entity	Region	Circuit	Counties Served
Big Bend Community Based Care, Inc	Northwest	1	Escambia, Okaloosa, Santa Rosa, Walton
		2	Franklin, Gadsden, Jefferson, Leon, Liberty, Wakulla
		14	Bay, Calhoun, Gulf, Holmes, Jackson, Washington
	Northeast	3	Madison, Taylor
Broward Behavioral Health Coalition, Inc	Southeast	17	Broward
Central Florida Behavioral Health Network, Inc	Central	10	Hardee, Highlands, Polk
	Suncoast	6	Pasco, Pinellas
		12	De Soto, Manatee, Sarasota
		13	Hillsborough
		20	Charlotte, Collier, Glades, Hendry, Lee

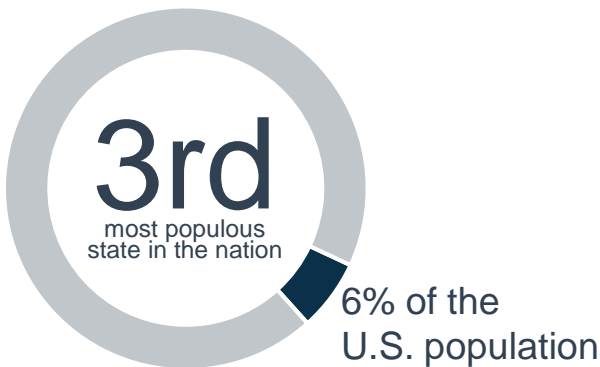
Managing Entity	Region	Circuit	Counties Served
Central Florida Cares Health System, Inc	Central	9	Orange, Osceola
		18	Brevard, Seminole
Lutheran Services Florida, Inc	Central	5	Citrus, Hernando, Lake, Marion, Sumter
	Northeast	3	Columbia, Dixie, Hamilton, Lafayette, Suwannee
		4	Clay, Duval, Nassau
		7	Flagler, Putnam, St. Johns, Volusia
		8	Alachua, Baker, Bradford, Gilchrist, Levy, Union
Southeast Florida Behavioral Health Network, Inc	Southeast	15	Palm Beach
		19	Indian River, Martin, Okeechobee, St. Lucie
South Florida Behavioral Health Network, Inc	Southern	11	Miami-Dade
		16	Monroe

[Table Of Contents](#)

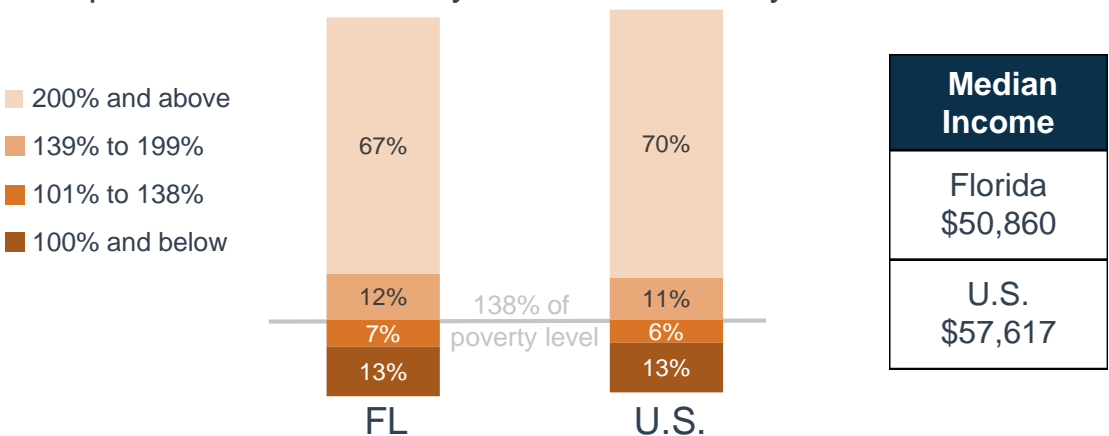
B. Florida Health Financing System Overview

B.1. Population Demographics

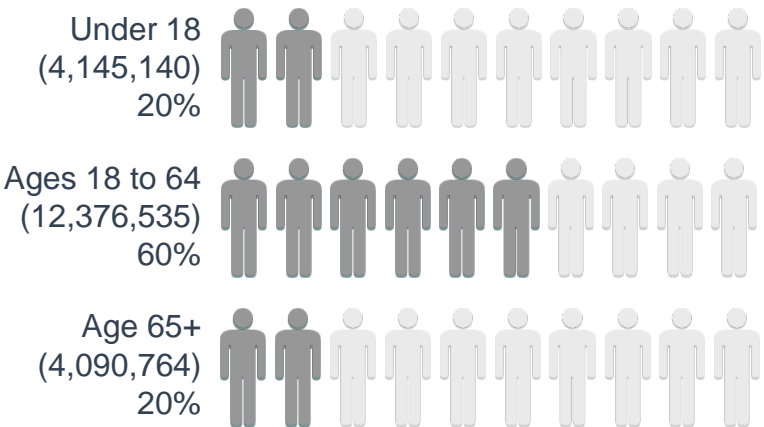
Total Florida Population-20,612,439
Estimated SMI Population-1,047,320



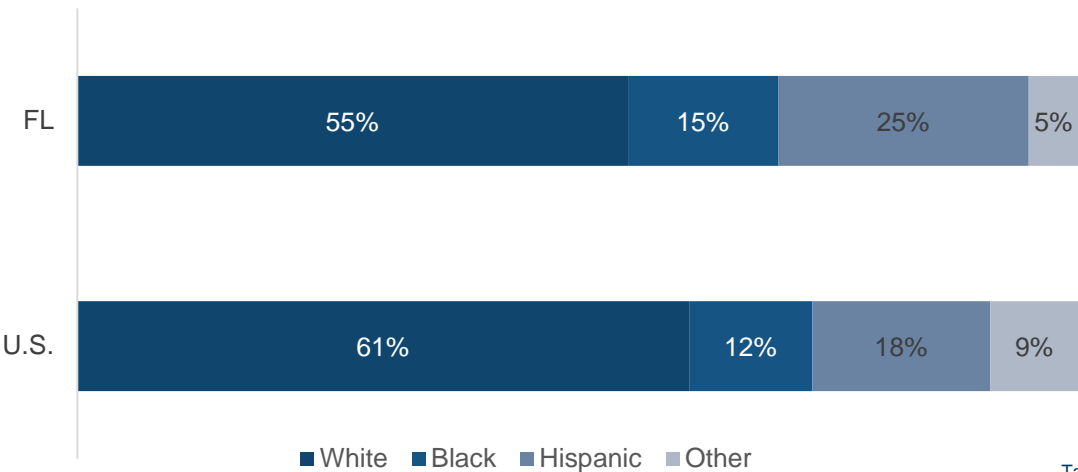
Population Distribution By Income To Poverty Threshold Ratio



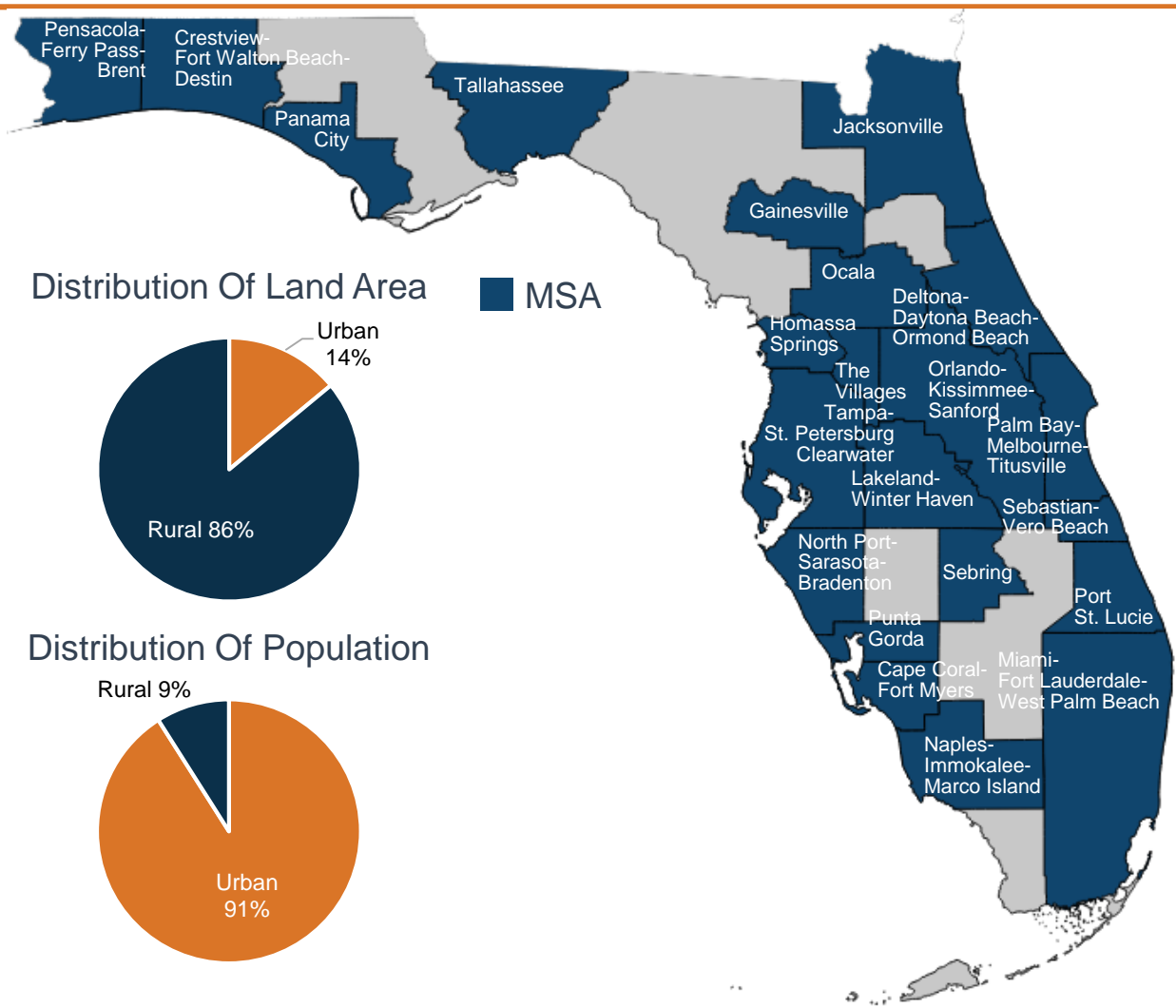
Population Distribution By Age



Florida & U.S. Racial Composition

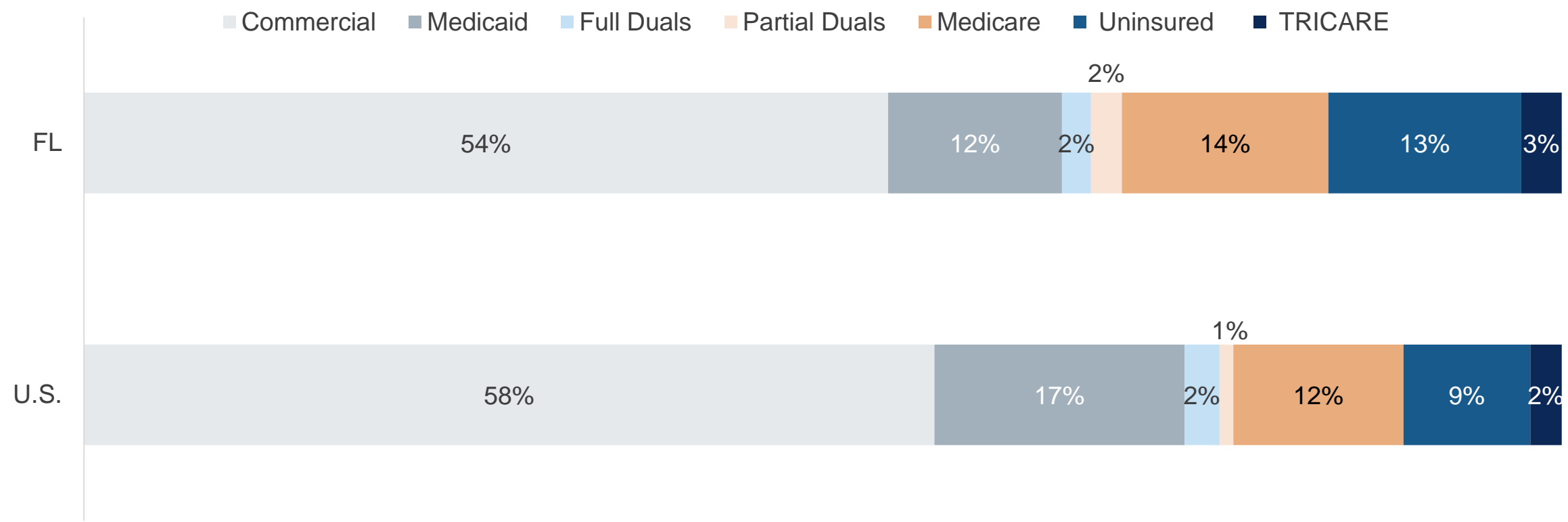


B.2. Population Centers



Metropolitan Statistical Areas (MSAs)		
MSA	Florida Residents	Percent Of Population
Total MSA Population	19,902,741	97%
Miami-Fort Lauderdale-West Palm Beach	6,066,387	29%
Tampa-St. Petersburg-Clearwater	3,032,171	15%
Orlando-Kissimmee-Sanford	2,441,257	12%
Jacksonville	1,478,212	7%
North Port-Sarasota-Bradenton	788,457	4%
Cape Coral-Fort Myers	722,336	4%
Lakeland-Winter Haven	666,149	3%
Deltona-Daytona Beach-Ormond Beach	637,674	3%
Palm Bay-Melbourne-Titusville	579,130	3%
Pensacola-Ferry Pass-Brent	485,684	2%
Other MSAs	3,005,284	15%

B.3. Population Distribution By Payer National Vs. State



B.4. Largest Florida Health Plans By Enrollment

Plan Name	Plan Type	Enrollment*
BlueCross BlueShield Of Florida	Commercial administrative services only (ASO)	2,511,589
Medicare Fee-For-Service (FFS)	Medicare	2,059,585
UnitedHealthcare Insurance Co	Commercial ASO	1,606,608
BlueCross BlueShield Of Florida	Commercial	1,440,307
Coventry Health Care	Commercial ASO	1,041,850
TRICARE	Other public	707,226
Health Options, Inc	Commercial	664,310
Staywell Health Plan Of Florida	Medicaid managed care	634,088
Cigna	Commercial ASO	521,902
Sunshine State Health Plan, Inc	Medicaid managed care	471,249

* Medicaid enrollment as of April 2018; TRICARE as of April 2018; Commercial as of 4th quarter 2017; Medicare as of September 2017

B.5. Largest Florida Health Plans By Estimated SMI Enrollment

Plan Name	Plan Type	Enrollment*	Estimated SMI Enrollment
Medicare Fee-For-Service (FFS)	Medicare	2,059,585	294,521
Magellan Complete Care, LLC	Medicaid managed care-SMI specialty plan	79,203	65,706
BlueCross BlueShield Of Florida	Commercial ASO	2,511,589	57,767
Humana Gold Plus	Medicare	363,179	51,935
Medicaid FFS	Medicaid FFS (full benefit population)	246,227	51,511
TRICARE	Other public	707,226	39,605
UnitedHealthcare Insurance Co	Commercial ASO	1,606,608	36,952
BlueCross BlueShield Of Florida	Commercial	1,440,307	33,127
Care Improvement Plus	Medicare	219,095	31,331
Coventry Health Care	Commercial ASO	1,041,850	23,963

* Medicaid enrollment as of April 2018; TRICARE as of April 2018; Commercial as of 4th quarter 2017; Medicare as of September 2017

B.6. Health Insurance Marketplace

Health Insurance Marketplace	
Type Of Marketplace	Federal
Individual Enrollment Contact	https://www.healthcare.gov/
	1-800-318-2596
Small Business Enrollment Contact	https://www.healthcare.gov/small-businesses/
	1-800-706-7893

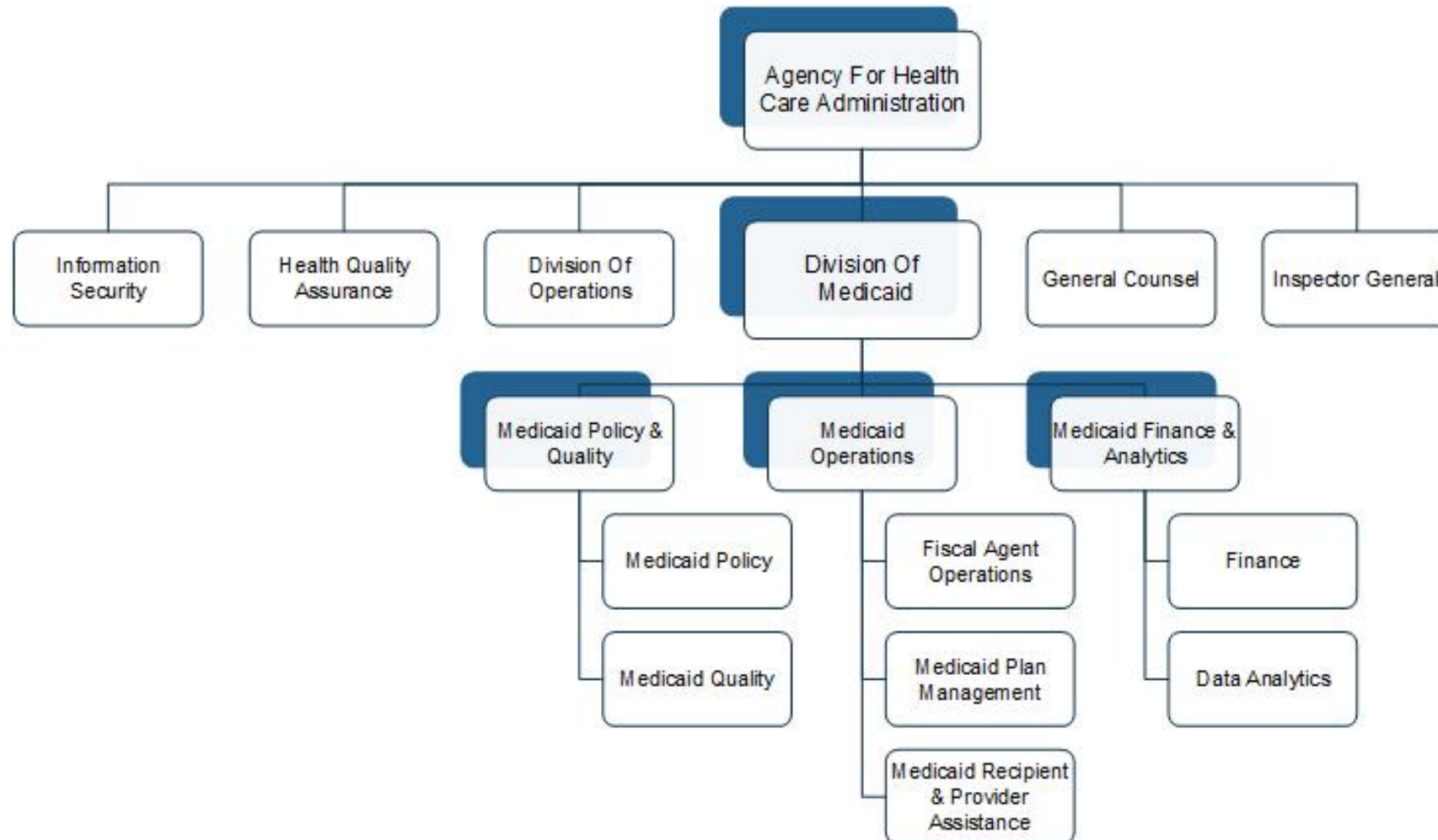
2018 Individual Market Health Plans
<ol style="list-style-type: none">1. Blue Cross & Blue Shield Of Florida2. Celtic Insurance Company3. Florida Health Care Plan, Inc4. Health First Commercial Plans, Inc5. Health Options, Inc6. Molina Healthcare Of Florida, Inc

2018 Small Group Market Health Plans
<ol style="list-style-type: none">1. Health First Commercial Plans, Inc

C. Medicaid Administration, Governance & Operations

C.1. Medicaid Governance

Organization Chart



C.2. Medicaid Governance

Key Leadership

Name	Position	Department
Justin Senior	Secretary	Agency For Health Care Administration
Beth Kidder	Deputy Secretary State Medicaid Director	Agency For Health Care Administration, Division Of Medicaid
Shevaun Harris	Assistant Deputy Secretary, Medicaid Policy & Quality	Agency For Health Care Administration, Division Of Medicaid
Abby Riddle	Assistant Deputy Secretary, Medicaid Operations	Agency For Health Care Administration, Division Of Medicaid
Vacant	Assistant Deputy Secretary, Medicaid Finance & Analytics	Agency For Health Care Administration, Division Of Medicaid

C.3. Medicaid Expansion Status

Medicaid Expansion	
Participating In Expansion	No
Date Of Expansion	N/A
Medicaid Eligibility Income Limit For Able-Bodied Adults	29% of FPL for parents; 29% for childless adults ages 19 and 20; 0% for other childless adults
Legislation Used To Expand Medicaid	N/A
Number Of Individuals Enrolled In The Expansion Group (December 2016)	N/A
Number Of Enrollees Newly Eligible Due To Expansion	N/A
Benefits Plan For Expansion Population	N/A

C.4. Medicaid Program Benefits

Federally Mandated Services

1. Inpatient hospital services other than services in an institution for mental disease (IMD)
2. Outpatient hospital services
3. Rural Health Clinic services
4. Federally Qualified Health Center (FQHC) services
5. Laboratory and x-ray services
6. Nursing facilities for individuals 21 and over
7. Early & Periodic Screening & Diagnosis & Treatment (EPSDT)
8. Family planning services and supplies
9. Free standing birth centers
10. Pregnancy-related and postpartum services
11. Nurse midwife services
12. Tobacco cessation programs for pregnant women
13. Physician services
14. Medical and surgical services of a dentist
15. Home health services
16. Nurse practitioner services
17. Non-emergency transportation to medical care

Florida's Optional Services

1. Podiatry
2. Chiropractic services
3. Services of other practitioners
4. Clinic services
5. Dental services and dentures
6. Physical therapy
7. Occupational therapy
8. Services for individuals with speech, hearing, and language disorders
9. Prescribed drugs
10. Prosthetic devices
11. Optometry and eyeglasses
12. Diagnostic, screening, and preventive services
13. Rehabilitative services
14. Inpatient services for individuals age 65 and over in IMDs
15. ICF/IDD services
16. Public institution services for individuals with I/DD
17. Inpatient psychiatric services for individuals under age 22
18. Hospice care
19. Nursing facility services for individuals under 21

D. Medicaid Financing & Service Delivery System

D.1. Medicaid Financing & Service Delivery System

Medicaid System Characteristics		
Characteristics	Medicaid Fee-For-Service (FFS)	Medicaid Managed Care
Enrollment (2017)	751,224	3,069,224
SMI Enrollment	<ul style="list-style-type: none">Florida does not specifically preclude individuals with SMI from enrolling in managed care, therefore the majority of the SMI population is enrolled in managed careA specialty health plan for individuals with SMI is available in most regionsAn estimated 77% of the SMI population is in managed care	
Management	Agency For Health Care Administration	<ul style="list-style-type: none">Managed Medical Assistance (MMA): 11 full-risk health plansSMI population: One full-risk specialty plan
Payment Model	Fee-For-Service	<ul style="list-style-type: none">MMA: Capitated rateSMI population: Capitated rate
Geographic Service Area	Statewide	<ul style="list-style-type: none">MMA: Statewide, with plans available by regionSMI population: All but three regions

Total Medicaid: 3,822,021 | Total Medicaid With SMI: 340,159

D.2. Medicaid Service Delivery System Enrollment By Eligibility Group

Population	Mandatory FFS Enrollment	Option To Enroll In FFS Or Managed Care	Mandatory Managed Care Enrollment
Parents & Caretakers			X
Children			X
Blind & Disabled Individuals			X
Aged Individuals			X
Dual Eligibles	<ul style="list-style-type: none"> Partial-benefit dual eligibles D-SNP enrollees 		Full-benefit dual eligibles not enrolled in D-SNPs
Medicaid Expansion	Not applicable		
Individuals Residing In Nursing Homes			X
Individuals Residing In ICF/IDD		X	
Individuals In Foster Care			X
Other Populations	<ul style="list-style-type: none"> Family planning only Breast & Cervical Cancer Program Emergency Medicaid for aliens 	<ul style="list-style-type: none"> Having other health care coverage Receiving refugee assistance Residing in justice system residential or group home facilities Enrolled in or waitlisted for I/DD home- and community based services (HCBS) waiver program Receiving services in a prescribed pediatric extended care center 	

D.3. Medicaid FFS Program Overview

- FFS enrollment as of April 2018 was 751,224
 - Of these, 246,227 were full benefit enrollees
 - The other 504,997 FFS enrollees include individuals with limited benefits: partial benefit dual eligibles, family planning waiver enrollees, Breast & Cervical Cancer Program enrollees, emergency service recipients, medically needy individuals, and enrollees living in juvenile justice residential facilities
- Adults who receive physical and behavioral health services through the FFS system must receive their long-term services and supports (LTSS) through a Long-Term Care (LTC) program health plan
 - As of April 2018, 18,434 FFS enrollees received LTSS through an LTC plan

D.4. Medicaid FFS Program

Behavioral Health Benefits

FFS Mental Health Benefits

1. Inpatient services
2. Assessment, evaluation, and testing
3. Treatment plan development and modification
4. Medication management
5. Individual, group, and family therapy
6. Day services
7. Psychosocial rehabilitation
8. Clubhouse services
9. Targeted case management
10. Therapeutic on-site services for individuals under 21 years old

FFS Addiction Treatment Benefits

1. Inpatient detoxification
2. Assessment and evaluation
3. Treatment plan development and modification
4. Individual, group, and family therapy
5. Medication assisted treatment
6. Day services

Through certified Medicaid match agreements, the state also distributes Medicaid funds on an FFS basis to reimburse the counties for the federal share of financing for delivery of the following addiction treatment services: comprehensive aftercare, individual and group peer recovery support services, and intervention services

D.5. Medicaid FFS Program SMI Population

- Florida does not specifically preclude individuals with SMI from enrolling in managed care based on a diagnosis of SMI; however, individuals with SMI may be enrolled in FFS based on other criteria
- It is estimated that as of April 2018, 23% of the SMI population was enrolled in FFS



D.6. Medicaid Managed Care Program Overview

- Managed care enrollment as of April 2018 was 3,069,224
- Florida calls its managed care program the Statewide Medicaid Managed Care (SMMC)
- The SMMC program consists of two components
 - Managed Medical Assistance (MMA): The MMA program provides medical and behavioral health services to children and adults
 - Long-Term Care (LTC): The standalone LTC program serves both the FFS and MMA populations; it provides nursing facility and HCBS to elderly persons and adults with disabilities who meet the requirements for a nursing facility level of care
- Although the managed care contract requires the health plans to increase compensation for qualified physicians based on savings realized through effective care management, no comprehensive value-based reimbursement model is in place as of May 2018

	LTC Enrollment	Persons Not Receiving LTC	Total Enrollment
FFS Program	18,434	732,790	751,224
MMA Program	83,512	2,985,712	3,069,224
Total Medicaid Program	100,220	3,721,801	3,822,021

D.7. Medicaid Managed Care Program

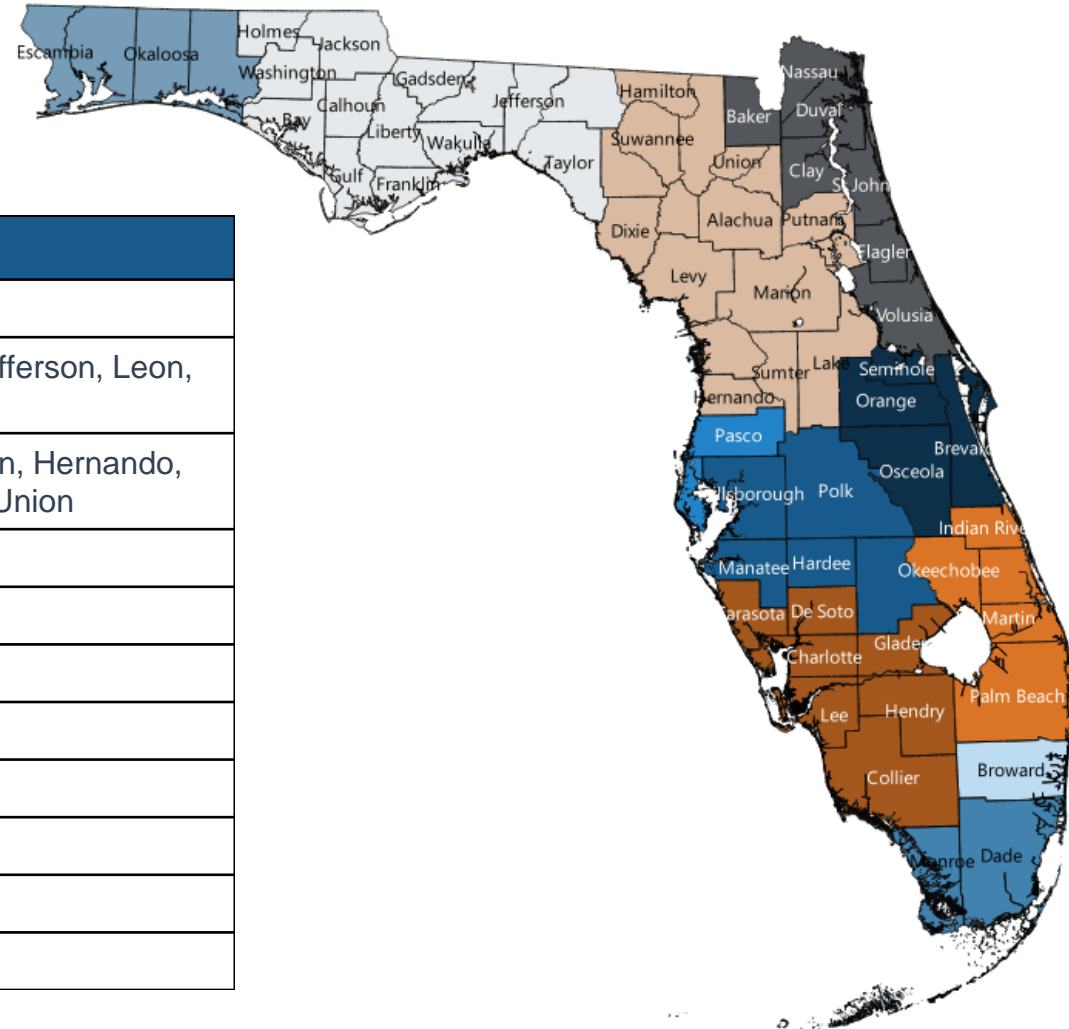
Managed Medical Assistance

- The Managed Medical Assistance (MMA) component of the statewide managed care program provides medical and behavioral health services to children and adults
- MMA delivers physical and behavioral health services to most populations through 11 standard health plans
- The state delivers services to populations with special health care needs (individuals with HIV/AIDS, dual eligibles with chronic conditions, children in child welfare, children with chronic conditions, and individuals with SMI) through six full-risk specialty health plans
 - Each specialty plan must have a care coordination program designed specifically for the population's special health care needs
 - Enrollment in specialty plans is optional, as individuals must have freedom of choice
- The MMA program is statewide, but plans are available by region; individuals may choose to enroll in any available plan
- MMA enrollees in specialty or standard health plans who require a nursing facility level of care receive LTSS via the Long-Term Care (LTC) managed care program

D.8. Medicaid Managed Care Program

Managed Care Regions

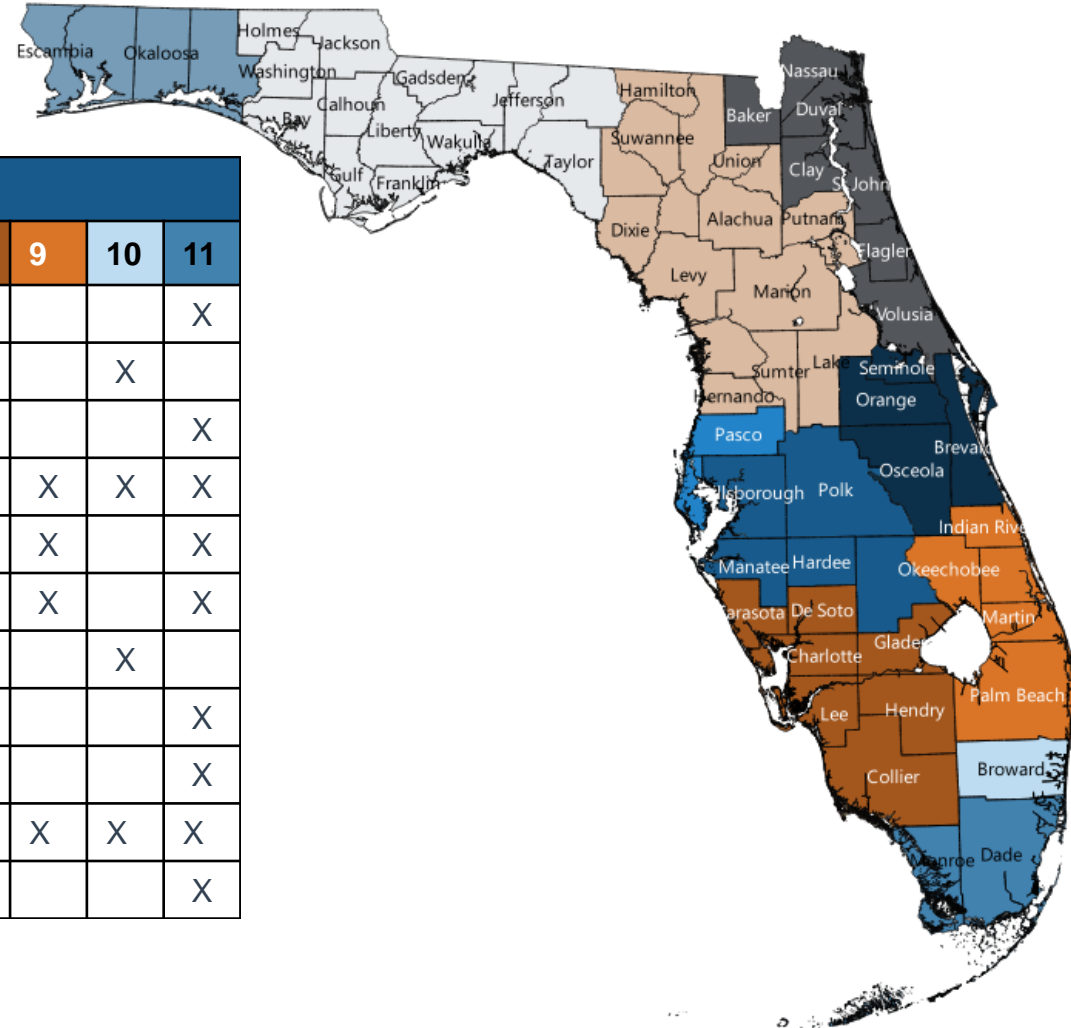
Region	Counties
1	Escambia, Okaloosa, Santa Rosa, Walton
2	Bay, Calhoun, Franklin, Gadsden, Gulf, Holmes, Jackson, Jefferson, Leon, Liberty, Madison, Taylor, Wakulla, Washington
3	Alachua, Bradford, Citrus, Columbia, Dixie, Gilchrist, Hamilton, Hernando, Lafayette, Lake, Levy, Marion, Putnam, Sumter, Suwannee, Union
4	Baker, Clay, Duval, Flagler, Nassau, St. Johns, Volusia
5	Pasco, Pinellas
6	Hardee, Highlands, Hillsborough, Manatee, Polk
7	Brevard, Orange, Osceola, Seminole
8	Charlotte, Collier, DeSoto, Glades, Hendry, Lee, Sarasota
9	Indian River, Martin, Okeechobee, Palm Beach, St. Lucie
10	Broward
11	Miami-Dade, Monroe



D.9. Medicaid Managed Care Program

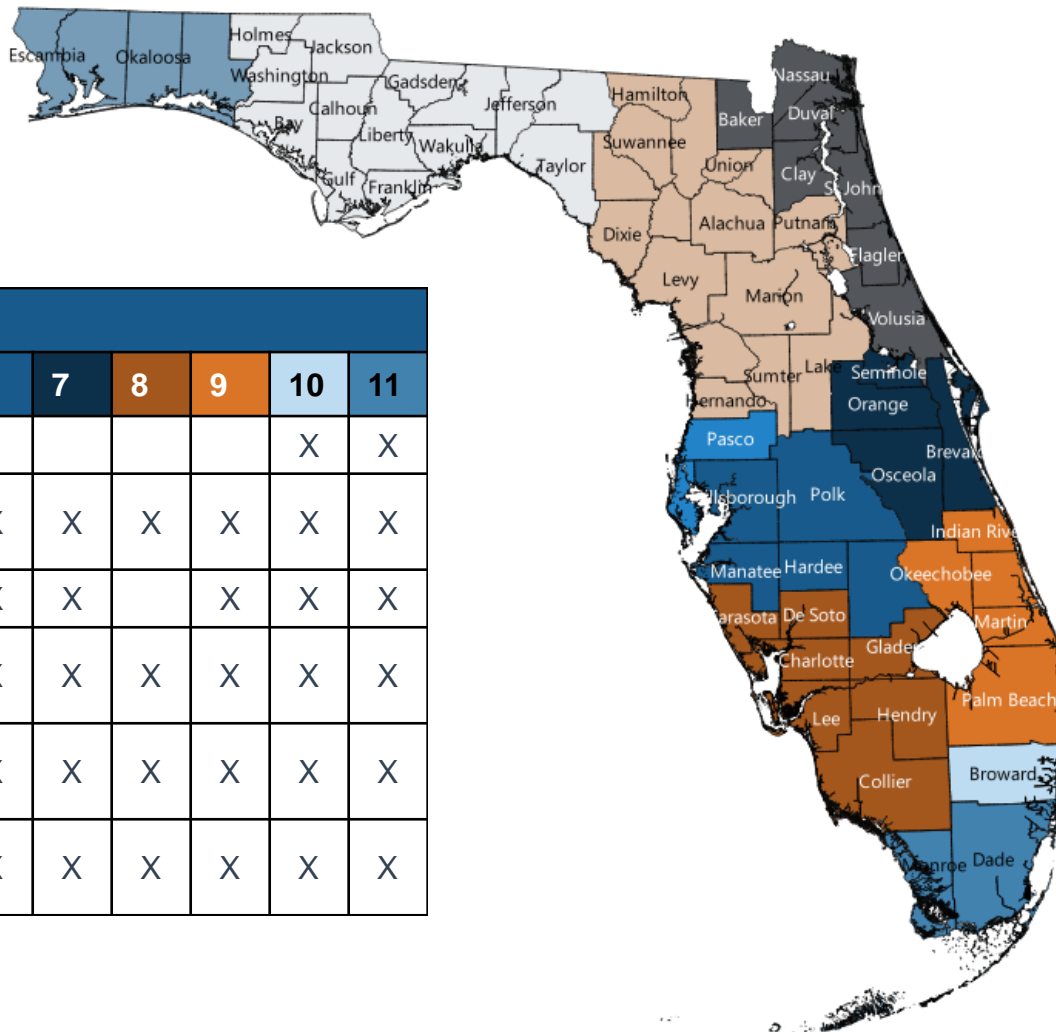
MMA Health Plans By Region

Standard Health Plans	Managed Care Regions										
	1	2	3	4	5	6	7	8	9	10	11
Amerigroup Florida, Inc					X	X	X				X
Better Health						X				X	
Coventry Health Care											X
Humana Medical Plan	X					X			X	X	X
Molina Healthcare Of Florida, Inc	X			X		X	X	X	X		X
Prestige Health Choice		X	X		X	X	X	X	X		X
SFCCN										X	
Simply Healthcare Plans, Inc											X
Staywell Health Plan Of Florida		X	X	X	X	X	X	X			X
Sunshine State Health Plan, Inc			X	X	X	X	X	X	X	X	X
UnitedHealthcare Of Florida, Inc			X	X			X				X



D.10. Medicaid Managed Care Program

MMA Specialty Health Plans By Region

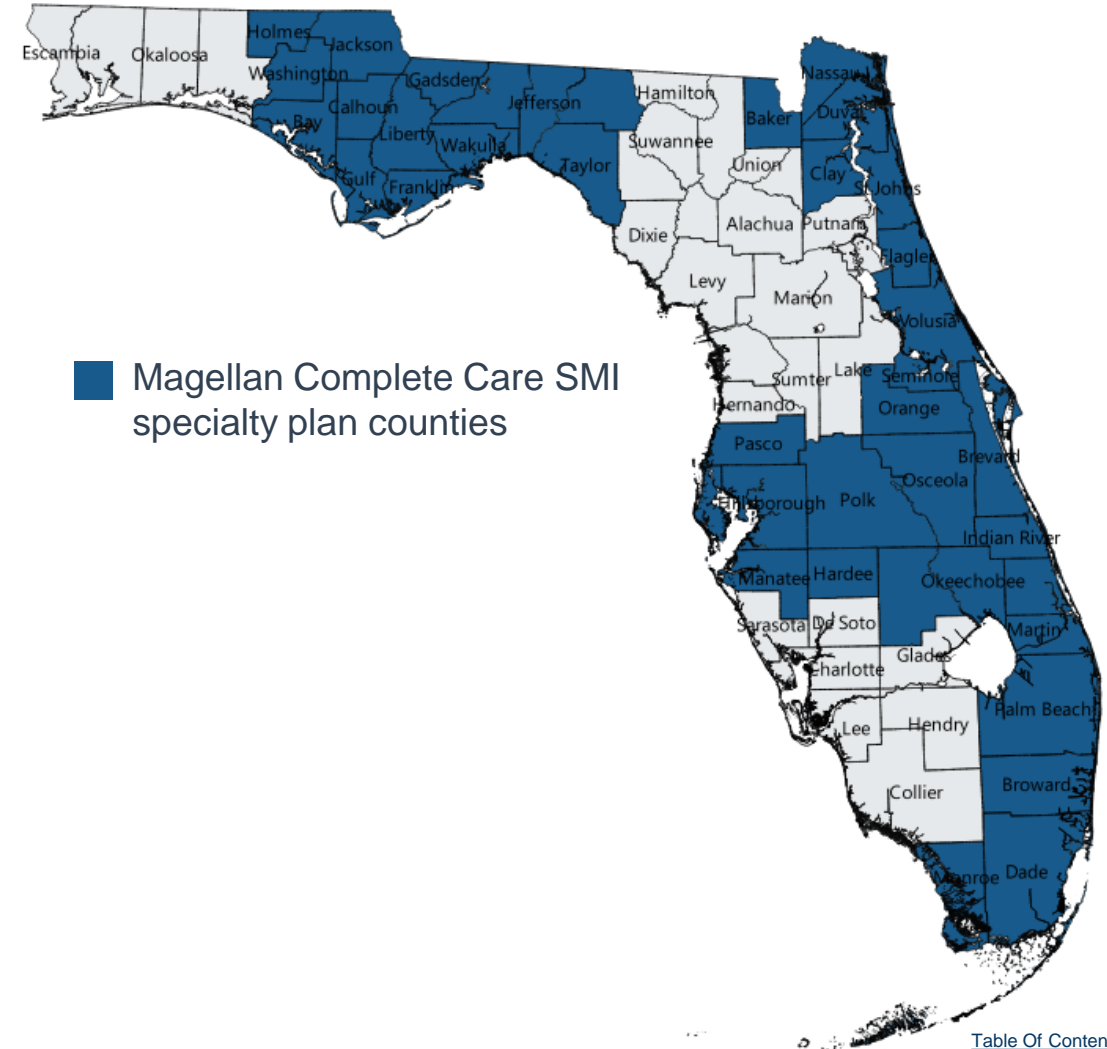


	Managed Care Regions										
Specialty Health Plans	1	2	3	4	5	6	7	8	9	10	11
AHF Positive Healthcare – HIV/AIDS										X	X
Freedom Health, Inc – Dual eligibles with chronic conditions			X		X	X	X	X	X	X	X
Magellan Complete Care – SMI		X		X	X	X	X		X	X	X
Simply/Clear Health Alliance – HIV/AIDS	X	X	X		X	X	X	X	X	X	X
Sunshine State Health Plan – Child welfare	X	X	X	X	X	X	X	X	X	X	X
Children’s Medical Services Network – Children with chronic conditions	X	X	X	X	X	X	X	X	X	X	X

D.11. Medicaid Managed Care Program

MMA SMI Specialty Plan

- The state enrolls individuals ages six and older, with an SMI or SED diagnosis, into Magellan Complete Care, its specialty plan for individuals with SMI
 - Individuals who do not wish to be enrolled in the specialty plan may enroll in a standard health plan
 - The plan is available in all parts of the state except regions 1, 3, and 8
 - The state estimates that 140,000 individuals are eligible for the program; as of April 2018, enrollment was 79,203
- The plan covers all state benefits, and additionally provides an intensive outpatient therapy benefit for addiction
- The plan also must develop a care coordination/case management program to address the special needs of the enrolled population



D.12. Medicaid Managed Care Program

Long-Term Care Program

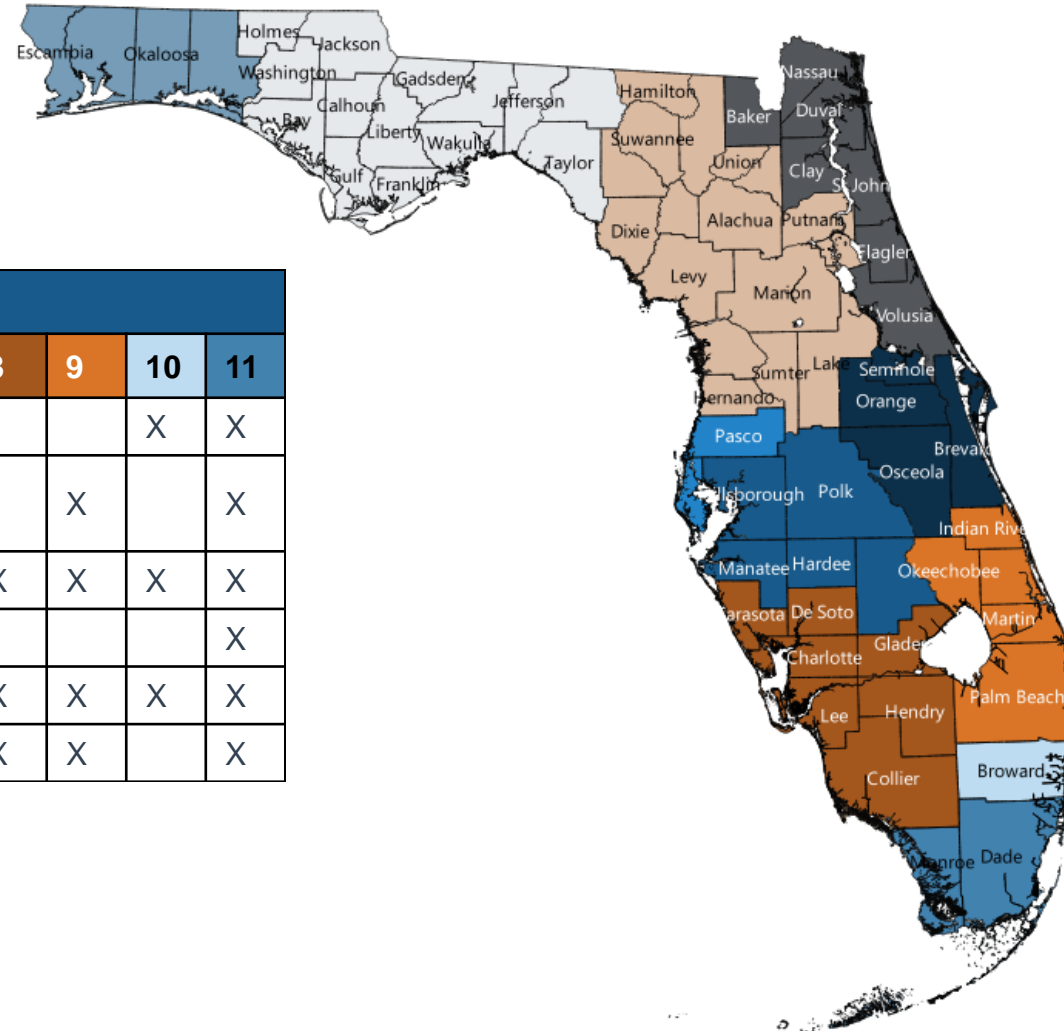
- The Long-Term Care (LTC) program provides nursing facility and HCBS to elderly persons and adults with disabilities who meet the requirements for a nursing facility level of care
- The LTC plans are paid a capitated rate to provide LTSS; all other state plan services are provided either through the Managed Medical Assistance (MMA) program or the FFS delivery system
- As of April 2018, 100,220 persons received services through the LTC program
- The LTC program is available statewide, but the six plans are available by region; individuals can choose among plans available in their region
- Enrollment is mandatory for persons needing a nursing facility level of care who are:
 - 65 years or older
 - 18 years or older and eligible for Medicaid due to disability
 - In hospice or institutional care
 - Aged out of the children's medical services program
- Enrollment is optional for persons who have other creditable health insurance coverage or are enrolled in the following programs:
 - Developmental Disabilities Waiver
 - Familial Dysautonomia Waiver
 - Model Waiver

Long-Term Care Program Services

1. Adult companion care
2. Adult day health care
3. Assisted living
4. Assistive care services
5. Attendant care
6. Behavioral management
7. Care coordination/case management
8. Caregiver training
9. Home accessibility adaptation
10. Home-delivered meals
11. Homemaker
12. Hospice
13. Intermittent and skilled nursing
14. Medical equipment and supplies
15. Medication administration
16. Medication management
17. Nursing facility
18. Nutritional assessment/risk reduction
19. Personal care
20. Personal emergency response system
21. Respite care
22. Occupational, physical, respiratory, and speech therapy
23. Non-emergency transportation

D.13. Medicaid Managed Care Program LTC Plans By Region

Long-Term Care Plans	Managed Care Regions										
	1	2	3	4	5	6	7	8	9	10	11
Amerigroup Florida										X	X
Coventry Healthcare Of Florida						X	X		X		X
Humana Medical Plan	X	X	X	X	X	X	X	X	X	X	X
Molina Healthcare Of Florida					X	X					X
Sunshine State Health Plan	X		X	X	X	X	X	X	X	X	X
UnitedHealthcare Of Florida		X	X	X	X	X	X	X	X		X



D.14. Medicaid Managed Care Program

Behavioral Health Benefits

- Behavioral health and pharmacy benefits are included in the MMA standard health and specialty plans' capitation rates
- The Magellan Complete Care specialty plan for persons with SMI offers an expanded intensive outpatient therapy benefit for addiction
- Matching funds for addiction treatment comprehensive aftercare, individual and group peer recovery support, and intervention are provided FFS by the state to counties, and are not the responsibility of the health plans
- The health plans may offer crisis stabilization services in lieu of state plan services if cost effective and consented to by the individual

Managed Care Mental Health Benefits

1. Inpatient services
2. Assessment, evaluation, and testing
3. Treatment plan development and modification
4. Medication management
5. Individual, group, and family therapy
6. Day services
7. Psychosocial rehabilitation
8. Clubhouse services
9. Targeted case management
10. Therapeutic on-site services for individuals under 21 years old

Managed Care Addiction Treatment Benefits

1. Inpatient detoxification
2. Assessment and evaluation
3. Treatment plan development and modification
4. Individual, group, and family therapy
5. Medication assisted treatment
6. Day services

D.15. Medicaid Managed Care Program SMI Population

- The SMI population is mandatorily enrolled in managed care unless they meet FFS criteria for exemption
- Individuals with SMI can enroll in a health plan specially designed to meet their needs in all but three regions
- It is estimated that as of April 2018, 77% of the SMI population was enrolled in managed care



D.16. Medicaid Program

Care Coordination Initiatives



Accountable Care
Organization (ACO)
Program

None



Affordable Care Act
Health Home

None



Patient-Centered
Medical Home (PCMH)

- No statewide program, but health plans may link provider organization incentive payments to PCMH accreditation



Other Care
Coordination Initiative

None

D.17. Medicaid Program

Demonstration & Care Management Waiver

Waiver Title	Waiver Description	Waiver Type	Enrollment Cap	Effective Date	Expiration Date
Florida Managed Medical Assistance (FMMA)	<ul style="list-style-type: none"> Expands managed care throughout the state and authorizes specialty plans for complex care populations Establishes a low-income pool of \$1.5 billion per year to support safety-net provider organizations 	1115	None	07/31/2014	06/30/2022
Florida Long Term Managed Care (FL-17)	Authorizes provision of LTSS through a managed care program; operates concurrently with FL Long-Term Care Managed Care 1915 (c) waiver	1915 (b)	None	12/28/2016	06/30/2021
Florida NEMT (FL-18)	Authorizes selective contracting for non-emergency transportation services	1915 (b)	None	02/01/2017	01/31/2019
Florida Medicaid Family Planning Waiver	Provides family planning services to women with incomes below 185% of the FPL	1115	None	01/01/1998	06/30/2018

In November 2016, the state submitted an FMMA waiver amendment proposal to receive funding for a pilot program that would provide additional supportive housing services, mobile crisis management, and self-help/peer support for persons aged 21 and older with SMI or addiction who are homeless or at-risk of homelessness due to their disability; the amendment is pending CMS approval

D.18. Medicaid Program

Section 1915 (c) HCBS Waivers

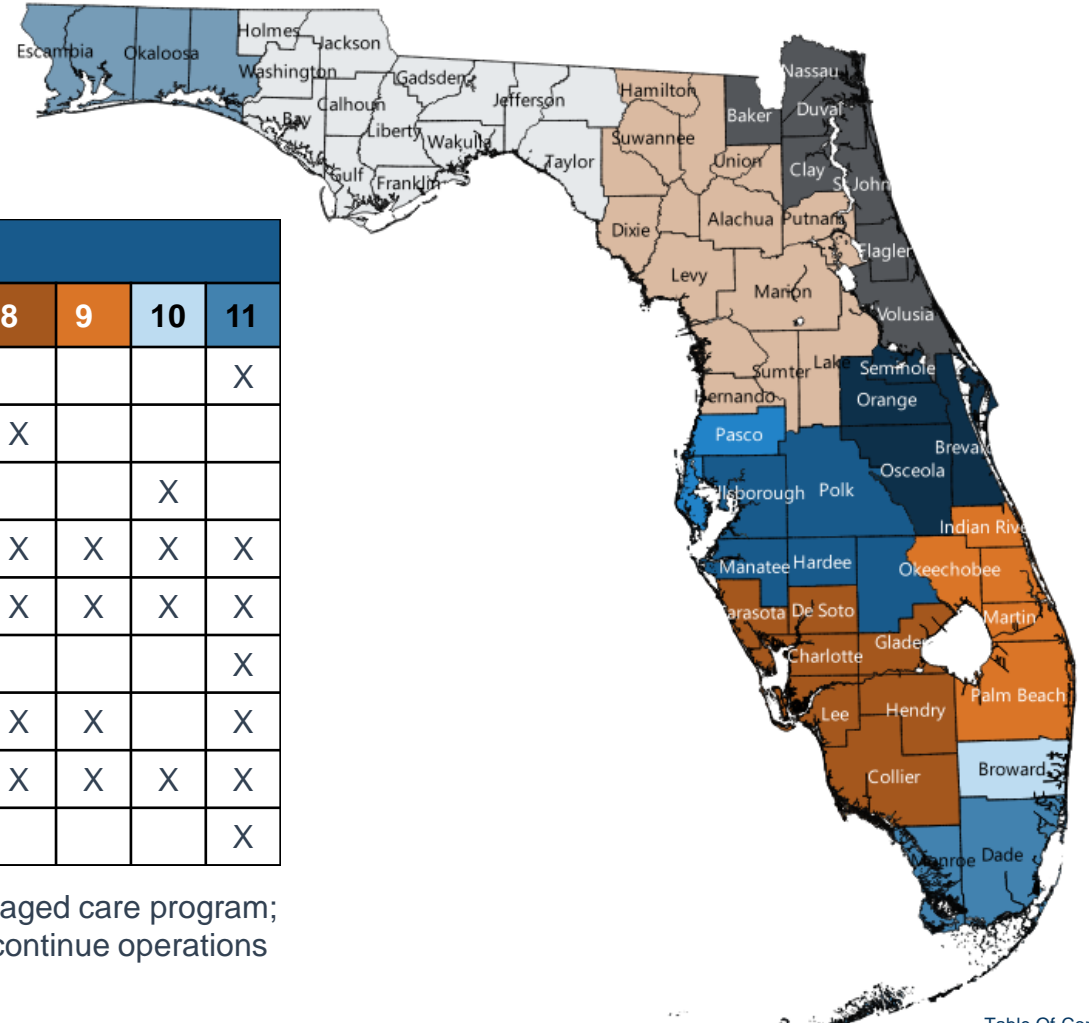
Waiver Title	Target Population	2018 Enrollment Cap	Operating Unit	Concurrent Management Authority
FL Florida Long-Term Care (0962.R01.00)	Individuals who have brain injury, HIV/AIDS, are medically fragile, or are physically disabled ages 18 to 64; or individuals ages 65 and above	77,033	Division Of Medicaid	1915 (b) waiver
FL DD Individual Budgeting (0867.R01.00)	Individuals ages three and above with autism or I/DD	40,818	Agency For Persons With Disabilities	None
FL Model Waiver (40166.R05.00)	Individuals who are medically fragile from birth to age 20	20	Division Of Medicaid	None
FL Familial Dysautonomia Waiver (40205.R02.00)	Individuals ages three to 64 who are medically fragile	15	Division Of Medicaid	None

D.19. Medicaid Program

New Initiatives

- Florida is negotiating new SMMC contracts with health plans selected through a competitive re-procurement process
 - The scheduled date for the new health plans to begin operations is January 1, 2019; however, protests filed by non-awardees may delay the launch
 - Under state law, the contracts will be in effect for five years with no renewal period
- The contracts will restructure the managed care delivery system, with the greatest change being the integration of LTC services into SMMC acute care health plans
- Four types of health plans will operate under the new contract:
 - Comprehensive Long-Term Care (Comprehensive) plans: These plans will provide physical and behavioral health services to all enrollees and LTC services to eligible recipients
 - Long-Term Care Plus (LTC Plus) plans: These plans will serve only the LTC population and deliver physical health, behavioral health, and LTC services
 - Managed Medical Assistance (MMA) plans: These plans will deliver physical and behavioral health services only; enrollees who require LTC services may not enroll in these plans
 - Specialty plans: These plans will deliver services to targeted populations
- The existing geographic service regions will not change under the new contracts
- The state has not clarified how specialty plan enrollees will receive LTC services under the new contracts; currently 16,693 specialty plan enrollees, including 15,361 individuals with SMI, receive services from the standalone LTC plans

D.20. Medicaid Managed Care Program Contract Awards By Region



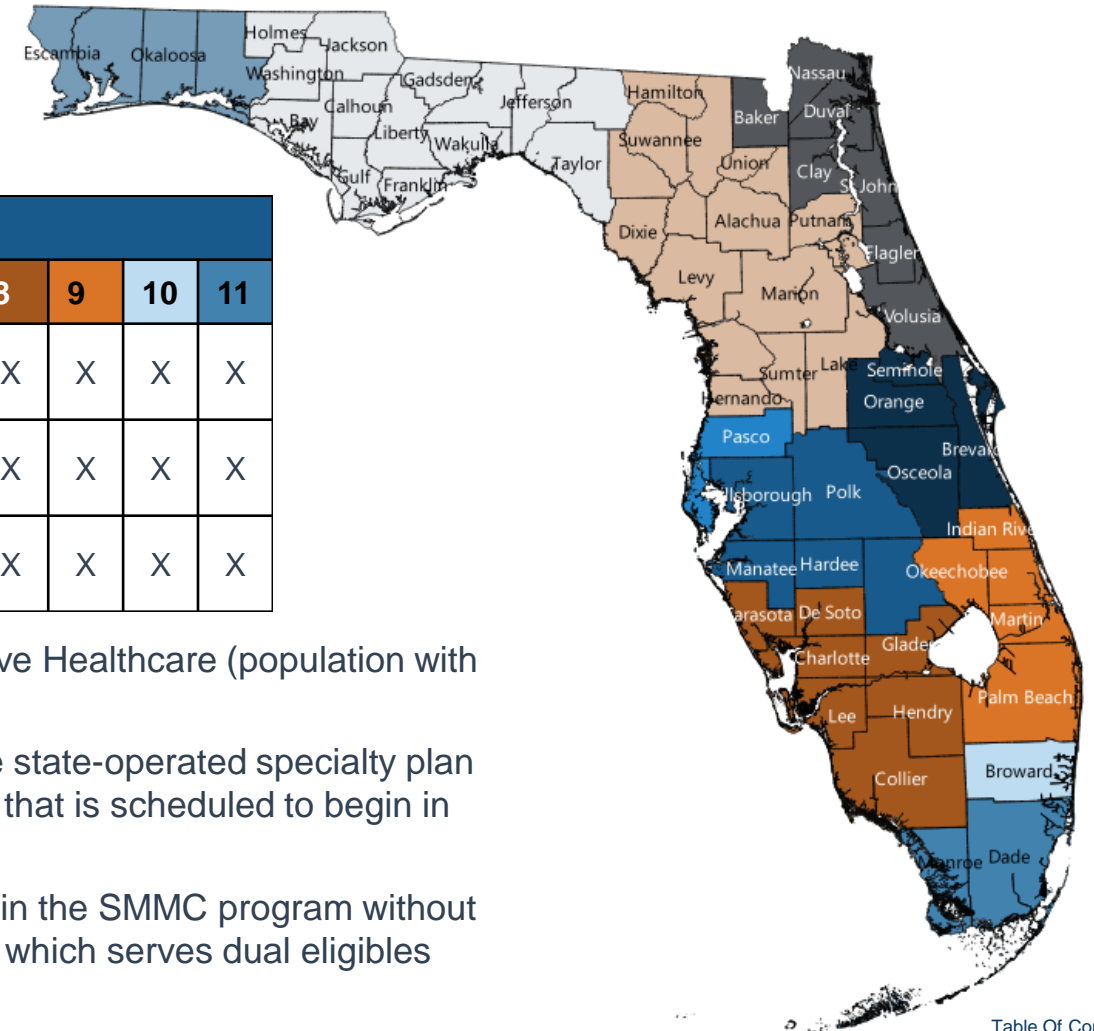
Plan	Type	Managed Care Regions										
		1	2	3	4	5	6	7	8	9	10	11
Aetna/Coventry	Comprehensive											X
Best Care	MMA								X			
Community Care Plan	MMA										X	
Florida Community Care	LTC Plus	X		X	X	X	X	X	X	X	X	X
Humana	Comprehensive		X	X	X	X	X	X	X	X	X	X
Simply Healthcare Plans, Inc	Comprehensive						X	X				X
Staywell Health Plan Of Florida	Comprehensive		X	X	X	X	X	X	X	X		X
Sunshine State Health Plan, Inc	Comprehensive	X		X	X	X	X	X	X	X	X	X
UnitedHealthcare Of Florida, Inc	Comprehensive						X					X

Best Care and Florida Community Care will be newcomers to the Florida Medicaid managed care program; incumbent plans Amerigroup, Better Health, Molina, and Prestige were not selected to continue operations

D.21. Medicaid Managed Care Program Specialty Plan Contract Awards By Region

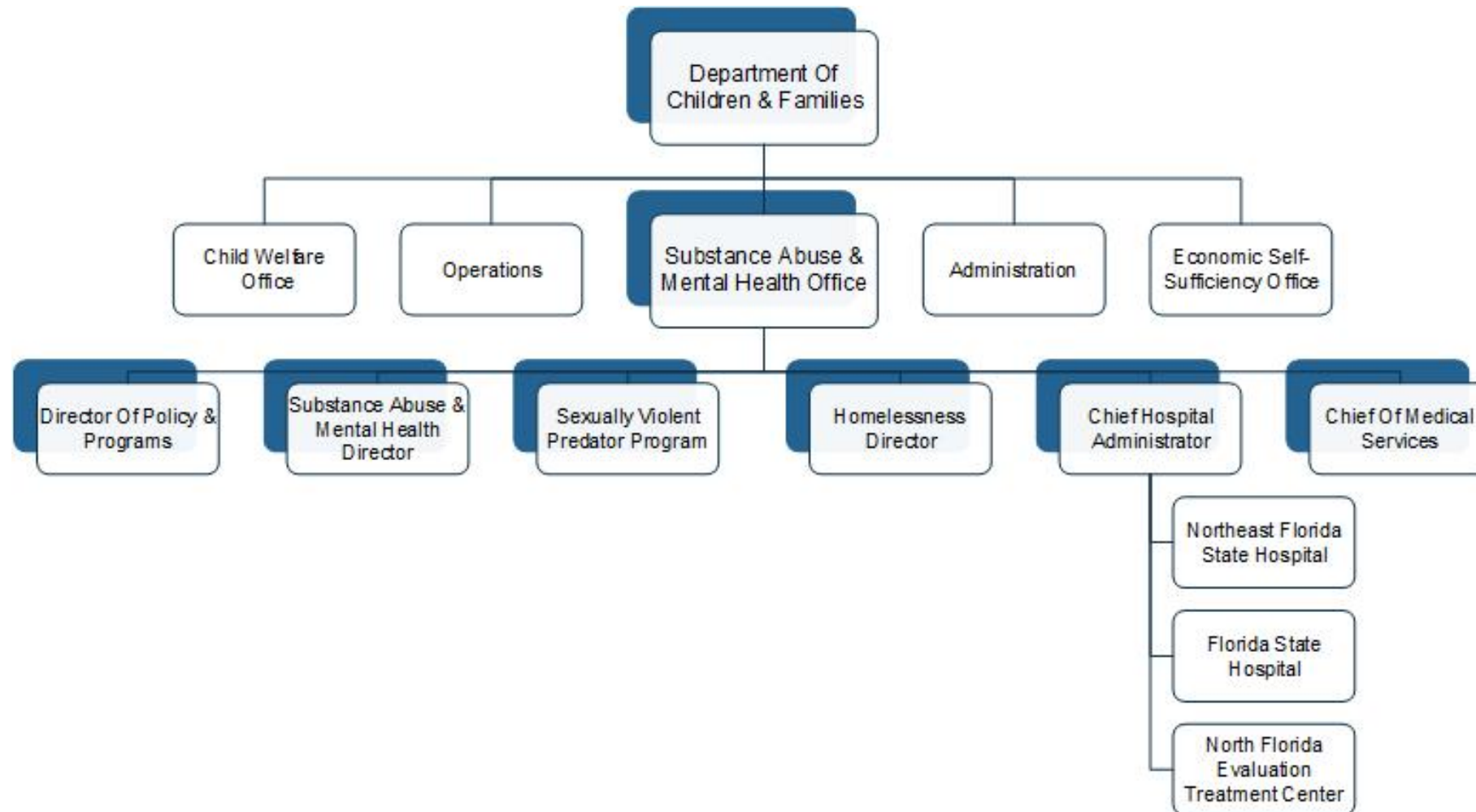
Specialty Plan	Target Population	Managed Care Regions										
		1	2	3	4	5	6	7	8	9	10	11
Clear Health Alliance	Individuals with HIV/AIDS	X	X	X	X	X	X	X	X	X	X	X
Staywell Health Plan Of Florida	Individuals with SMI	X	X	X	X	X	X	X	X	X	X	X
Sunshine State Health Plan, Inc	Child welfare population	X	X	X	X	X	X	X	X	X	X	X

- Incumbents Magellan Complete Care (population with SMI) and AHF Positive Healthcare (population with HIV/AIDS) were not awarded contracts
- Florida is planning to privatize the Children's Medical Services Network, the state-operated specialty plan for children with chronic conditions, under a separate procurement process that is scheduled to begin in June 2018
- Florida state law permits participation of certain Medicare Advantage plans in the SMMC program without competitive procurement; as a result, incumbent plan Freedom Health, Inc, which serves dual eligibles with chronic conditions, is eligible to continue operations



E. State Behavioral Health Administration & Finance System

E.1. Substance Abuse & Mental Health Office Governance Organization Chart



E.2. Substance Abuse & Mental Health Office Governance

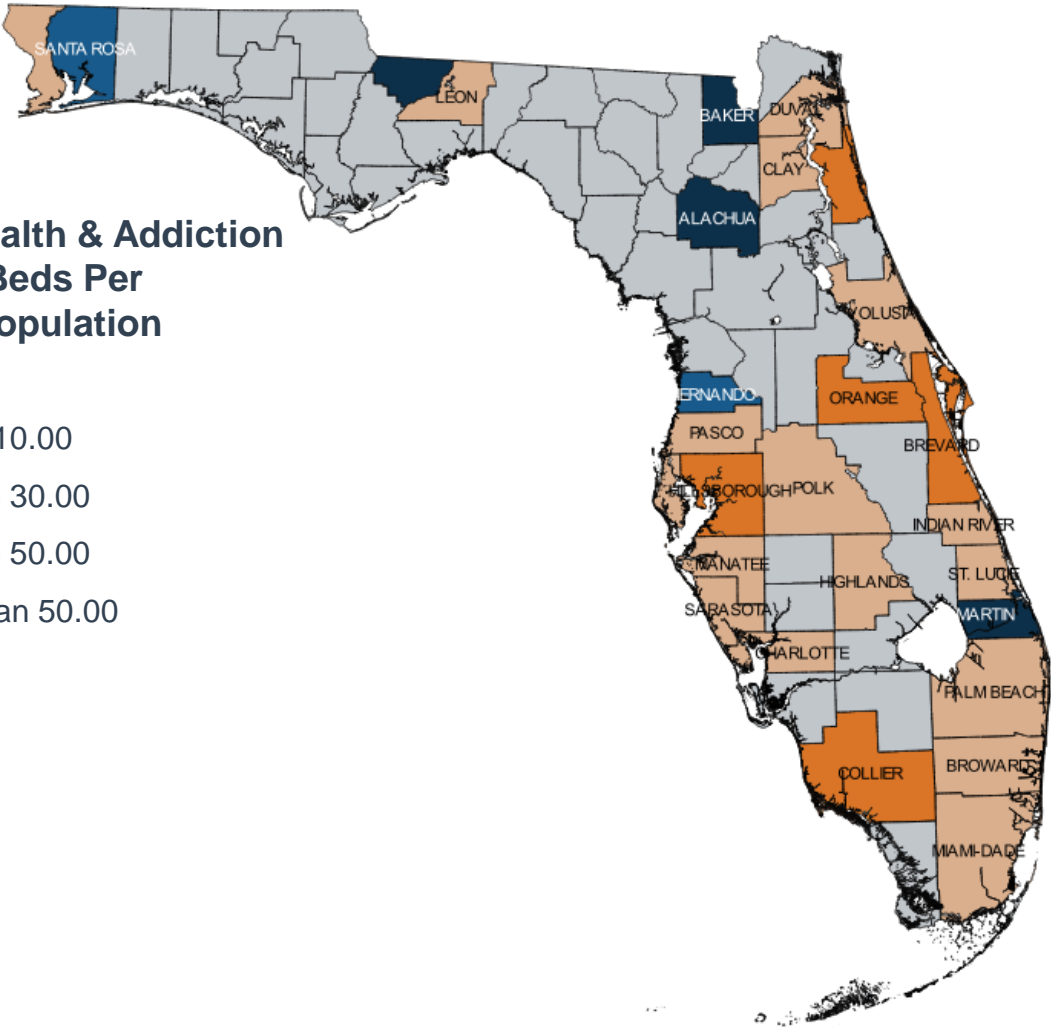
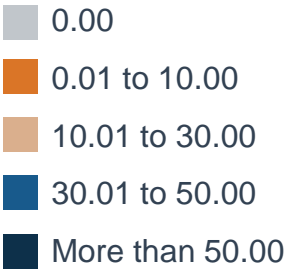
Key Leadership

Name	Position	Department
Mike Carroll	Secretary	Department Of Children & Families (DCF)
David Fairbanks	Deputy Secretary	Department Of Children & Families (DCF)
John Bryant	Assistant Secretary For Substance Abuse & Mental Health	DCF Substance Abuse & Mental Health Office
Ute Gazioch	Substance Abuse & Mental Health Director	DCF Substance Abuse & Mental Health Office
Robert Quam	Chief Hospital Administrator	DCF Substance Abuse & Mental Health Office
Wendy Scott	Director Of Policy & Programs	DCF Substance Abuse & Mental Health Office
Carolyn Drazinic	Chief Of Medical Services	DCF Substance Abuse & Mental Health Office

E.3. Mental Health & Addiction Hospital Bed Distribution

Mental Health & Addiction Treatment Bed Capacity	
Total number of hospitals with mental health and addiction beds	56
Number of mental health and addiction beds	5,078
Number of mental health and addiction beds per 100,000 population	24.64

Mental Health & Addiction Hospital Beds Per 100,000 Population



E.4. State Psychiatric Institutions

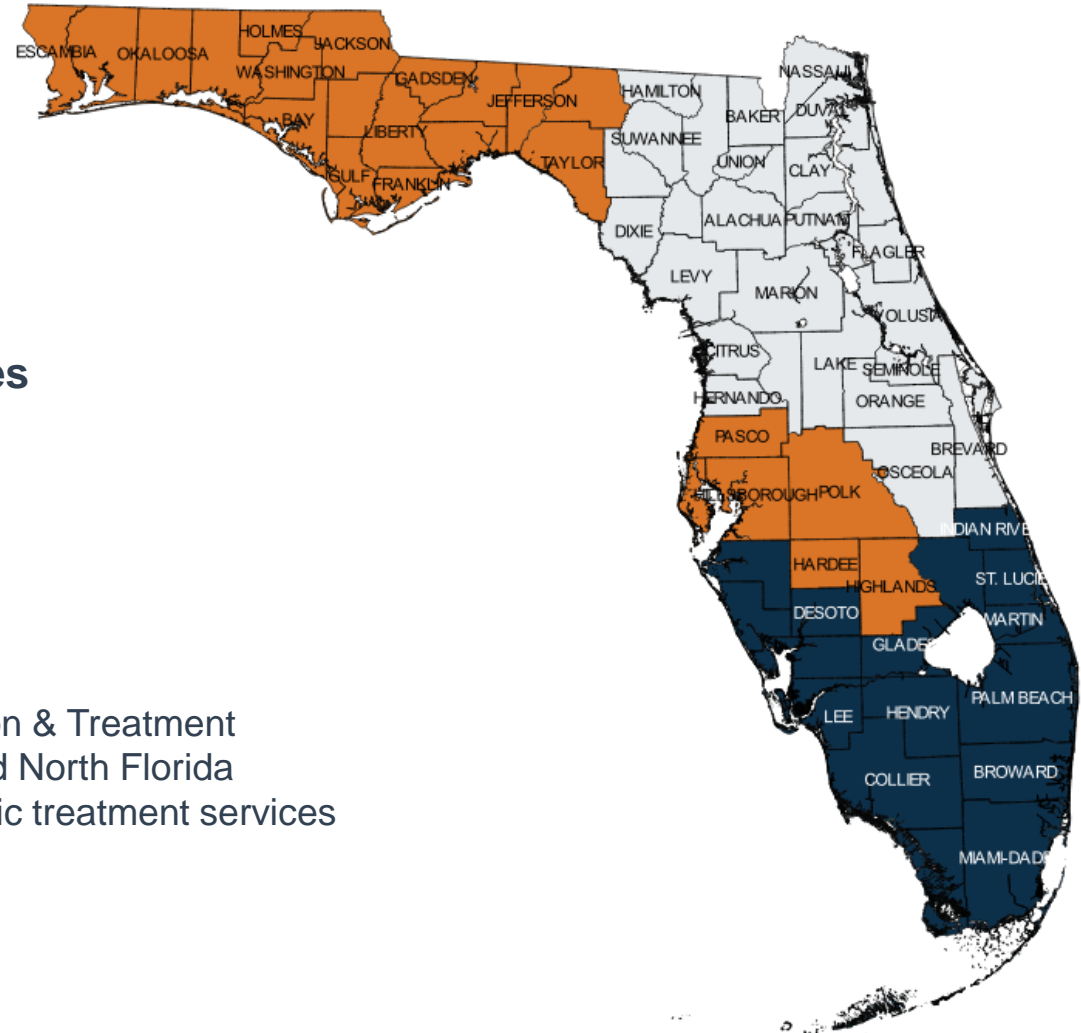
State Psychiatric Institutions				
Institution	Type	Operator	Location	Beds
Florida State Hospital	Civil, Forensic	State Of Florida	Chattahoochee	959
Northeast Florida State Hospital	Civil	State Of Florida	Macclenny	633
South Florida State Hospital	Civil	Correct Care, LLC	Pembroke Pines	341
South Florida Evaluation & Treatment Center	Forensic	Correct Care, LLC	Florida City	249
Treasure Coast Treatment Facility	Forensic	Correct Care, LLC	Indiantown	224
North Florida Evaluation & Treatment Center	Forensic	State Of Florida	Gainesville	193
Total				2,599

E.5. State Psychiatric Institutions Catchment Areas

State Hospital Civil Treatment Services Catchment Areas

- Florida State Hospital
- Northeast Florida State Hospital
- South Florida State Hospital

Florida State Hospital, South Florida Evaluation & Treatment Center, Treasure Coast Treatment Facility, and North Florida Evaluation & Treatment Center provide forensic treatment services to persons from throughout the state



F. State Behavioral Health Stakeholder Organizations

F.1. Accountable Care Organizations

Other Medicare ACO Models	
ACO	Model
Accountable Care Of Northeast Florida, LLC	Advance Payment Model
Accountable Care Options, LLC	Next Generation Model
Accountable Care Partners, LLC	Advance Payment Model
ACO Health Partners	Advance Payment Model
American Health Alliance	Advance Payment Model
Baroma Accountable Care, LLC	Next Generation Model
Central Florida Physicians Trust, LLC	Advance Payment Model
Citrus ACO, LLC	Investment Model
Deep South Regional ACO	Investment Model
HealthCare Partners ACO California, LLC	Next Generation Model
Physicians Collaborative Trust ACO, LLC	Advance Payment Model
PremierMD ACO, LLC	Investment Model
Primary Care Alliance, LLC	Next Generation Model
Primary Partners, LLC	Advance Payment Model
Reliance Health Network	Advance Payment Model

Medicare Shared Savings Program	
1. Accountable Care Coalition Of Northwest Florida, LLC	20. Holy Cross Physician Partners ACO, LLC
2. Accountable Care Medical Group Of Florida	21. Integral Healthcare, LLC
3. Accountable Care Network Of Independent Physicians	22. Integrated Care Alliance, LLC
4. Aledade Florida Central ACO	23. Medical Consultants Management ACO
5. Allcare Options, LLC	24. Meridian Health Systems ACO Corporation
6. BayCare Physician Partners ACO, LLC	25. Milestone Health, Inc
7. Bethesda Health Quality Alliance, LLC	26. Millennium Accountable Care Organization
8. Broward Guardian	27. Next ACO Of Nature Coast
9. Central Florida ACO	28. Palm Beach Accountable Care Organization, LLC
10. Collaborative Care Of Florida, LLC	29. Paradigm ACO, LLC
11. Emerald Coast ACO, LLC	30. Physician First ACO, LLC
12. Emerald Physician Services, LLC	31. Physicians ACO, LLC
13. First Coast Health Alliance, LLC	32. PQN-Georgie, LLC
14. Florida Medical Clinic ACO, LLC	33. Select Physicians ACO, LLC
15. Florida Physicians Trust, LLC	34. Space Coast ACO
16. GulfCoast Accountable Care Network	35. St Vincent's Accountable Care Organization, LLC
17. Health Choice Care, LLC	36. The Physicians Accountable Care Organization
18. Health First Partners, LLC	37. USMM Accountable Care Partners
19. Health Point ACO, LLC	38. West Florida ACO, LLC

F.2. Accountable Care Organizations (Continued)

Commercial	
ACO	Commercial Insurer
BayCare Physician Partners ACO, LLC	Aetna, Cigna, Blue Cross
Boca Raton Regional Hospital	Aetna, Coventry
Broward Health ACO	Cigna
Cleveland Clinic Florida	Florida Blue
Florida Physicians Trust, LLC	UnitedHealthcare
Holy Cross Physician Partners ACO, LLC	Cigna, Florida Blue
Medical Specialists Of Palm Beach	Florida Blue
Memorial Health Network	Cigna
Moffitt Cancer Center	Florida Blue
NCH Healthcare System	Florida Blue
Orlando Health Physician Partners	Cigna, Florida Blue
Physician Health Partners Florida	Florida Blue
Primary Partners, LLC	Cigna
PrimeHealth Physicians	Cigna
Tenet Healthcare / Advantage Health Network	Cigna, Florida Blue

G. Appendices

Acronym Legend

Acronym	Definition	Acronym	Definition	Acronym	Definition
ACA	Affordable Care Act	FPL	Federal Poverty Level	NCH	Naples Community Hospital
ACO	Accountable Care Organization	FQHC	Federally Qualified Health Center	NEMT	Non-Emergency Medical Transportation
AHF	AIDS Healthcare Foundation	HCBS	Home- & Community-Based Services	PCCM	Primary Care Case Management
ASO	Administrative Services Organization	HIV/AIDS	Human Immunodeficiency Virus/Acquired Immunodeficiency Syndrome	OSAMH	Office Of Substance Abuse & Mental Health
BCBS	Blue Cross Blue Shield	I/DD	Intellectual/Developmental Disability	PCCM	Primary Care Case Management
CMS	Centers For Medicare & Medicaid Services	ICF/IDD	Intermediate Care Facility / Intellectual Or Developmental Disabilities	PCMH	Patient-Centered Medical Home
DCF	Department Of Children & Families	IMD	Institutions For Mental Disease	SED	Serious Emotional Disturbance
DD	Developmental Disabilities	LLC	Limited Liability Company	SFCCN	South Florida Community Care Network
D-SNP	Dual Eligible Special Needs Plan	LTC	Long-Term Care	SMI	Serious Mental Illness
EPSDT	Early & Periodic Screening, Diagnosis & Treatment	LTSS	Long-Term Services & Supports	SMMC	Statewide Medicaid Managed Care
FFS	Fee-For-Service	MMA	Managed Medical Assistance	UHC	UnitedHealthcare
FL	Florida	MSA	Metropolitan Statistical Area	USMM	United States Medical Management
FMMA	Florida Managed Medical Assistance				

Glossary Of Terms

Word	Abbreviation	Definition
Accountable Care Organizations	ACO	ACOs are groups of providers—such as physicians and hospital systems—that form an agreement to coordinate care for a set group of consumers. If the ACO delivers high quality care—measured through performance metrics—and lowers the cost of providing care against a baseline, then the organization receives a portion of the savings generated. ACOs can exist alongside all payment structures (fee-for-service and managed care delivery systems) and payers (Medicare, Medicaid, commercial).
Administrative Services Organization	ASO	An arrangement in which an organization hires a third party to deliver administrative services to the organization, such as claims processing and billing. The organization bears the risk for all claims.
Capitation		A set amount of money paid per enrollee per month to a health care entity to cover the cost of health care services. Generally the entity assumes full-risk for the cost of each enrollee's care.
Dual Eligible		An individual who is eligible for Medicare (Part A and B) and Medicaid. Medicare serves as the individual's primary insurance, and Medicaid acts as a supplement. Dual eligibles are sometimes referred to as Medicare-Medicaid enrollees (MMEs).
Federal Poverty Level	FPL	The U.S. Department of Health and Human Services sets a standard level of income that is used to determine eligibility for services and benefits, including Medicaid. In 2018, the FPL is \$12,140 for an individual and \$25,100 for a family of four.
Fee-For-Service	FFS	A system in which provider organizations are reimbursed for each covered service such as an office visit, test, or procedure according to rates set by the payer.

Glossary Of Terms

Word	Abbreviation	Definition
Health Home		A “whole person” care coordination model that specifically targets populations with chronic conditions including those with SMI. Health homes provide six essential functions: 1.) Comprehensive care management; 2.) Care coordination and health promotion; 3.) Comprehensive transitional care from inpatient to other settings, including appropriate follow-up; 4.) Individual and family support; 5.) Referral to community and social support services; 6.) Use of health information technology to link services.
Health Insurance Marketplace	HIM	Created by the PPACA, the health insurance marketplace is an online service where individuals and small businesses can purchase health insurance. The federal government subsidizes coverage purchased on the marketplace through premium tax credits for individuals with income up to 400% of the FPL.
Home- & Community-Based Services	HCBS	Long-term services and supports provided in the home or community in order to avoid institutionalization. Traditionally provided through 1915(c) waivers, HCBS services are usually limited to specific populations and a specific number of people. HCBS services include skilled nursing care, personnel care services, assistance with activities of daily living, and custodial care.
Institutions For Mental Disease	IMD	A hospital, nursing facility, or other institution of more than 16 beds that is primarily engaged in providing diagnosis, treatment, or care of persons with mental diseases, including addiction. Federal financial participation is available for Medicaid IMD services for individuals under the age of 21 and age 65 and over. In recent years, CMS has relaxed the rules prohibiting payments in IMDs for individuals age 21-64. Medicaid health plans may provide up to 15 days of IMD services per month in lieu of state plan services if medically appropriate, cost effective, and consented to by the individual. Additionally, states may be granted a 1115 waiver authority to allow individuals to receive residential addiction treatment in IMDs.
Long-Term Services & Supports	LTSS	Services provided in the home, community, or institutional setting to those who experience difficulty living independently and completing activities of daily living as a result of cognitive disabilities, physical impairments, disabling chronic conditions and/or age.

Glossary Of Terms

Word	Abbreviation	Definition
Managed Care/ Managed Care Organization	MCO	A health care delivery and financing system designed to manage cost, utilization, and quality. In Medicaid, states generally implement managed care through contracts with health plans, which provide a limited set of benefits to enrollees through a capitated or per person per month (PMPM) rate. The health plans generally assumes full-risk for the cost of treatment, and therefore usually contracts with a network of provider organizations to provide care at the most efficient rate possible while still maintaining member health.
Managed Medical Assistance	MMA	Florida's Medicaid managed care program for physical and behavioral health services. It includes standard plans for most adults and children and specialty plans for persons with chronic conditions or certain diagnoses.
Medicaid		Medicaid is a joint federal-state program that provides health coverage to economically disadvantaged populations, such as low-income adults, children, and aged, blind, and disabled (ABD) individuals. States establish their own eligibility standards, benefit packages, provider payment policies, and administrative structures under broad federal guidelines. Financing is a shared responsibility of the federal government and the states.
Medicaid Waiver Section 1115	1115 waiver	Known as research and demonstration waivers, states can apply for program flexibility to test new or existing approaches to financing and delivering Medicaid and CHIP.
Medicaid Waiver Section 1915(b)	1915(b) waiver	States can apply for waivers to provide services through managed care delivery systems, or otherwise limit people's choice of providers.
Medicaid Waiver Section 1915(c)	1915(c) waiver	States can apply for waivers to provide long-term care services in home and community-based settings, rather than institutional settings.
Medicaid Waiver Concurrent Section 1915(b) & 1915(c)		States can apply to simultaneously implement two types of waivers to provide a continuum of services to the elderly and people with disabilities, as long as all Federal requirements for both programs are met.

Glossary Of Terms

Word	Abbreviation	Definition
Medical Home		A medical home is not a physical place, but a model for care coordination. Medical homes provide primary care services, care coordination, enhanced access to care, and care that is culturally and linguistically appropriate. Medical homes exist across multiple payers.
Medicare		Federal health insurance for individuals over the age of 65, individuals with certain disabilities, and individuals with end stage renal disease. Medicare covers most acute care services (which may include psychiatric care), but does not cover LTSS or non-physician behavioral health services.
Medicare Advantage	MA	Medicare Part C - also known as Medicare Advantage - is a program which allows individuals who are eligible for Medicare Parts A and B to elect a private health plan to provide their Medicare coverage. The federal government pays the plan's premiums up to a set level, and individuals are responsible for the difference.
Metropolitan Statistical Area	MSA	An urbanized area of 50,000 or more population plus adjacent territory that has a high degree of social and economic integration as measured by commuting ties.
Patient-Centered Medical Home	PCMH	See Medical Home.
Patient Protection & Affordable Care Act	PPACA or ACA	U.S. health care reform signed into law in 2010. The legislation regulates certain aspects of private and public health insurance programs and authorizes an individual mandate to secure essential health coverage, premium tax credits for the purchase of private health insurance, and increased insurance coverage of preexisting conditions. In 2012 the Supreme Court ruled that state participation is optional for provisions of the law expanding Medicaid coverage to adults ages 18 to 64 with incomes under 138% of the FPL. In 2017, Congress repealed the tax penalties associated with the individual mandate essentially ending the mandate.

Glossary Of Terms

Word	Abbreviation	Definition
Primary Care Case Management	PCCM	A health care delivery system model with limited utilization and cost control. Under the PCCM model, Medicaid enrollees choose a primary care physician who acts as a gatekeeper for more intensive services. The primary care physician generally receives a per person per month (PMPM) fee for care coordination, and is reimbursed fee-for-service for all medical services provided. Some states consider PCCM a managed care delivery model, while other states consider it an FFS delivery model.
Serious Mental Illness	SMI	A mental, behavioral, or emotional disorder that lasts for a sufficient duration of time and causes impairment of major life activities. Serious mental illnesses include major depression, schizophrenia, bipolar disorder, obsessive compulsive disorder (OCD), panic disorder, post traumatic stress disorder (PTSD), and borderline personality disorder.
Value-Based Reimbursement	VBR	Reimbursement model in which payers financially reward or penalize health care provider organizations for performance on quality and cost of care. VBR payment mechanisms include P4P; capitation; shared savings models; shared risk models; and payments based on clinically-defined episodes, called episodes of care or bundled payments.

Sources

A. Executive Summary

A.1. Florida Physical Health Care Coverage Map

- Information compiled from sources provided throughout the profile.

A.2. Medicaid System Overview

- Information compiled from sources provided throughout the profile.

A.3. Medicaid Care Coordination Initiatives

- Information compiled from sources provided throughout the profile.

A.4. Behavioral Health Safety-Net Delivery System: Overview

- Information compiled from sources provided throughout the profile.

A.5. State Behavioral Health Safety-Net Delivery System

- Florida Department of Children and Families.(2018, January 1). Florida Substance Abuse and Mental Health Annual Plan Update. Retrieved May 2, 2018 from <http://www.dcf.state.fl.us/programs/samh/publications/Substance%20Abuse%20and%20Mental%20Health%20Services%20Plan%202017%20Update.pdf>
- Florida Department of Children and Families. Managing Entities. Retrieved May 2, 2018 from <http://www.myflfamilies.com/service-programs/substance-abuse/managing-entities>

A.6. State Behavioral Health Safety-Net Delivery System: Managing Entities Map

- Florida Department of Children and Families. Managing Entities. Retrieved May 2, 2018 from <http://www.myflfamilies.com/service-programs/substance-abuse/managing-entities>

A.7. State Behavioral Health Safety-Net Delivery System: Managing Entities

- Florida Department of Children and Families. Managing Entities. Retrieved May 2, 2018 from <http://www.myflfamilies.com/service-programs/substance-abuse/managing-entities>

Sources

B. Florida Health Financing System Overview

B.1. Population Demographics

- United States Census Bureau. 2016 American Community Survey 1-Year Estimates K200104 Population By Age. Retrieved November 29, 2017 from <https://factfinder.census.gov/faces/nav/jsf/pages/index.xhtml>
- United States Census Bureau. 2016 American Community Survey 1-Year Estimates K200104 Population By Age. Retrieved November 29, 2017 from <https://factfinder.census.gov/faces/nav/jsf/pages/index.xhtml>
- United States Census Bureau. 2016 American Community Survey 1-Year Estimates B03002 Hispanic or Latino Origin By Race. Retrieved November 29, 2017 from <https://factfinder.census.gov/faces/nav/jsf/pages/index.xhtml>
- United States Census Bureau. 2016 American Community Survey 1-Year Estimates S1903 Median Income In the Past 12 Months. Retrieved November 29, 2017 from <https://factfinder.census.gov/faces/nav/jsf/pages/index.xhtml>
- United States Census Bureau. 2017 Current Population Survey Annual Social and Economic Supplement POV-46 Poverty Status By State. Retrieved November 29, 2017 from <https://www.census.gov/data/tables/time-series/demo/income-poverty/cps-pov/pov-46.html>

B.2. Population Centers

- United States Census Bureau. Percent Urban and Rural in 2010 By State. Retrieved December 4, 2017 from <https://www.census.gov/geo/reference/ua/urban-rural-2010.html>
- United States Census Bureau. 2016 Annual Estimates of Residential Population-Metropolitan and Micropolitan Statistical Area GCT-PEPANNRES. Retrieved December 21, 2017 from <https://factfinder.census.gov/faces/nav/jsf/pages/index.xhtml>
- United State Department of Commerce. (2013, February 28). Counties in Metropolitan Statistical Areas. Retrieved December 21, 2017 from <https://www.bea.gov/regional/docs/msalist.cfm?mlist=45>

B.3. Population Distribution By Payer: National Vs. State

- *OPEN MINDS*. (2018). Serious Mental Illness Prevalence Estimates.

B.4. Largest State Health Plans By Enrollment

- *OPEN MINDS*. (2017, December). Health Plans Database.
- TRICARE. (2018, April 16). Beneficiaries by Location. Retrieved May 3, 2018 from <http://www.tricare.mil/About/Facts/BeneNumbers/States>
- Health Plans USA. (2017, September). Subscription Database. Available from <http://www.markfarrah.com/products/health-plans-usa.aspx>
- Florida Agency for Health Care Administration. (2018, April). Florida Statewide Medicaid Monthly Enrollment Report. Retrieved April 30, 2018 from http://www.fdhc.state.fl.us/medicaid/Finance/data_analytics/enrollment_report/index.shtml

Sources

B.5. Largest State Health Plans By Estimated SMI Enrollment

- OPEN MINDS. (2017, December). Health Plans Database.
- TRICARE. (2018, April 16). Beneficiaries by Location. Retrieved May 3, 2018 from <http://www.tricare.mil/About/Facts/BeneNumbers/States>
- Health Plans USA. (2017, September). Subscription Database. Available from <http://www.markfarrah.com/products/health-plans-usa.aspx>
- Florida Agency for Health Care Administration. (2018, April). Florida Statewide Medicaid Monthly Enrollment Report. Retrieved April 30, 2018 from http://www.fdhc.state.fl.us/medicaid/Finance/data_analytics/enrollment_report/index.shtml

B.6. Health Insurance Marketplace

- United States Department of Health and Human Services. (2017, October 25). Plan Year 2018 Individual Medical Coverage Landscape. Retrieved November 1, 2017 from <https://data.healthcare.gov/dataset/QHP-PY2018-Medi-Indi-Land-10-23-2017/hd64-a3rh>
- United States Department of Health and Human Services. (2017, October 25). Plan Year 2018 SHOP Medical Landscape. Retrieved November 1, 2017 from <https://data.healthcare.gov/dataset/QHP-PY2018-Medi-SHOP-Land-10-23-2017/7r3j-8gie>

C. Medicaid Administration, Governance & Operations

C.1. Medicaid Governance: Organizational Chart

- Florida Agency for Health Care Administration. Agency for Health Care Administration Organizational Chart. Retrieved April 27, 2018 from https://ahca.myflorida.com/inside_ahca/org_chart.shtml

C.2. Medicaid Governance: Key Leadership

- Florida Agency for Health Care Administration. Agency for Health Care Administration Organizational Chart. Retrieved April 27, 2018 from https://ahca.myflorida.com/inside_ahca/org_chart.shtml

C.3. Medicaid Expansion Status

- Centers for Medicare and Medicaid Services. (2017, December). MACStats: Medicaid and CHIP Data Book. Retrieved January 2, 2018 from <https://www.macpac.gov/macstats/>
- Centers for Medicare and Medicaid Services. (2017, December). Medicaid Enrollment Data Collected Through MBES. Retrieved February 2, 2018 from <https://www.medicare.gov/medicaid/program-information/medicaid-and-chip-enrollment-data/enrollment-mbes/index.html>
- US Government Publishing Office. (2011, October 1). Code of Federal Regulations Title 42. Retrieved February 2, 2018 from <https://www.gpo.gov/fdsys/granule/CFR-2011-title42-vol4/CFR-2011-title42-vol4-sec440-315>

Sources

C.4. Medicaid Program Benefits

- Medicaid and CHIP Payment and Access Commission. Mandatory and Optional Benefits. Retrieved December 6, 2017 from <https://www.macpac.gov/subtopic/mandatory-and-optional-benefits/>
- Florida Agency for Health Care Administration. Medicaid State Plan. Retrieved April 27, 2018 from <http://www.fdhc.state.fl.us/medicaid/stateplan.shtml>

D. Medicaid Financing & Service Delivery System

D.1. Medicaid Financing & Service Delivery System

- Florida Agency for Health Care Administration. (2017, December 21). Florida Managed Medical Assistance Section 1115 Waiver. Retrieved May 2, 2018 from <https://www.medicaid.gov/medicaid/section-1115-demo/demonstration-and-waiver-list/?entry=8450>
- Florida Agency for Health Care Administration. (2018, February 14). Florida Long-Term Managed Care Section 1915 (b) Waiver. Retrieved May 2, 2018 from <https://www.medicaid.gov/medicaid/section-1115-demo/demonstration-and-waiver-list/?entry=24301>
- Florida Agency for Health Care Administration. (2018, April). Florida Statewide Medicaid Monthly Enrollment Report. Retrieved April 30, 2018 from http://www.fdhc.state.fl.us/medicaid/Finance/data_analytics/enrollment_report/index.shtml

D.2. Medicaid Service Delivery System Enrollment By Eligibility Group

- Florida State Legislature. (2017) State Statutes Chapter 409. Retrieved April 30, 2018 from <https://flsenate.gov/Laws/Statutes>
- Florida Agency for Health Care Administration. (2017, March 7). A Snapshot of the Florida Medicaid Long-Term Care Program. Retrieved April 30, 2018 from https://ahca.myflorida.com/Medicaid/statewide_mc/pdf/LTC/SMMC_LTC_Snapshot.pdf
- Florida Agency for Health Care Administration. (2017, June 8). A Snapshot of the Florida Medicaid Managed Medical Assistance Program. Retrieved April 30, 2018 from https://ahca.myflorida.com/Medicaid/statewide_mc/pdf/mma/SMMC_MMA_Snapshot.pdf
- Florida Agency for Health Care Administration. (2017, December 21). Florida Managed Medical Assistance Section 1115 Waiver. Retrieved May 2, 2018 from <https://www.medicaid.gov/medicaid/section-1115-demo/demonstration-and-waiver-list/?entry=8450>

D.3. Medicaid Fee-For-Service Program: Overview

- Florida Agency for Health Care Administration. (2018, February 14). Florida Long-Term Managed Care Section 1915 (b) Waiver. Retrieved May 2, 2018 from <https://www.medicaid.gov/medicaid/section-1115-demo/demonstration-and-waiver-list/?entry=24301>
- Florida Agency for Health Care Administration. (2018, April). Florida Statewide Medicaid Monthly Enrollment Report. Retrieved April 30, 2018 from http://www.fdhc.state.fl.us/medicaid/Finance/data_analytics/enrollment_report/index.shtml
- Florida Agency for Health Care Administration. (2017, March 7). A Snapshot of the Florida Medicaid Long-Term Care Program. Retrieved April 30, 2018 from https://ahca.myflorida.com/Medicaid/statewide_mc/pdf/LTC/SMMC_LTC_Snapshot.pdf

Sources

D.4. Medicaid FFS Program: Behavioral Health Benefits

- Florida Agency for Health Care Administration. (2017, January). Community Behavioral Health Services Fee Schedule. Retrieved May 2, 2018 from https://ahca.myflorida.com/medicaid/review/Reimbursement/Community_Behavioral_Health_Services.pdf
- Florida Agency for Health Care Administration. (2018, March). Medicaid and the Opioid Crisis. Retrieved May 2, 2018 from https://ahca.myflorida.com/medicaid/mcac/docs/2018-03-20_Meeting/Opioid_Presentation_MCAC_032018.pdf
- Florida Agency for Health Care Administration. Medicaid Certified Match Substance Abuse Services. Retrieved May 2, 2018 from http://ahca.myflorida.com/Medicaid/substance_abuse/index.shtml

D.5. Medicaid FFS Program: SMI Population

- Florida Agency for Health Care Administration. (2017, March 7). A Snapshot of the Florida Medicaid Long-Term Care Program. Retrieved April 30, 2018 from https://ahca.myflorida.com/Medicaid/statewide_mc/pdf/LTC/SMMC_LTC_Snapshot.pdf
- Florida Agency for Health Care Administration. (2017, June 8). A Snapshot of the Florida Medicaid Managed Medical Assistance Program. Retrieved April 30, 2018 from https://ahca.myflorida.com/Medicaid/statewide_mc/pdf/mma/SMMC_MMA_Snapshot.pdf
- Florida Agency for Health Care Administration. (2017, December 21). Florida Managed Medical Assistance Section 1115 Waiver. Retrieved May 2, 2018 from <https://www.medicaid.gov/medicaid/section-1115-demo/demonstration-and-waiver-list/?entry=8450>

D.6. Medicaid Managed Care Program: Overview

- Florida Agency for Health Care Administration. (2017, March 7). A Snapshot of the Florida Medicaid Long-Term Care Program. Retrieved April 30, 2018 from https://ahca.myflorida.com/Medicaid/statewide_mc/pdf/LTC/SMMC_LTC_Snapshot.pdf
- Florida Agency for Health Care Administration. (2017, June 8). A Snapshot of the Florida Medicaid Managed Medical Assistance Program. Retrieved April 30, 2018 from https://ahca.myflorida.com/Medicaid/statewide_mc/pdf/mma/SMMC_MMA_Snapshot.pdf
- Florida Agency for Health Care Administration. (2017, December 21). Florida Managed Medical Assistance Section 1115 Waiver. Retrieved May 2, 2018 from <https://www.medicaid.gov/medicaid/section-1115-demo/demonstration-and-waiver-list/?entry=8450>
- Florida Agency for Health Care Administration. (2018, February 14). Florida Long-Term Managed Care Section 1915 (b) Waiver. Retrieved May 2, 2018 from <https://www.medicaid.gov/medicaid/section-1115-demo/demonstration-and-waiver-list/?entry=24301>
- Florida Agency for Health Care Administration. (2018, April). Florida Statewide Medicaid Monthly Enrollment Report. Retrieved April 30, 2018 from http://www.fdhc.state.fl.us/medicaid/Finance/data_analytics/enrollment_report/index.shtml

Sources

D.7. Medicaid Managed Care Program: Managed Medical Assistance

- Florida Agency for Health Care Administration. (2018, April). Florida Statewide Medicaid Monthly Enrollment Report. Retrieved April 30, 2018 from http://www.fdhc.state.fl.us/medicaid/Finance/data_analytics/enrollment_report/index.shtml
- Florida Agency for Health Care Administration. (2017, June 8). A Snapshot of the Florida Medicaid Managed Medical Assistance Program. Retrieved April 30, 2018 from https://ahca.myflorida.com/Medicaid/statewide_mc/pdf/mma/SMMC_MMA_Snapshot.pdf
- Florida Agency for Health Care Administration. (2017, December 21). Florida Managed Medical Assistance Section 1115 Waiver. Retrieved May 2, 2018 from <https://www.medicaid.gov/medicaid/section-1115-demo/demonstration-and-waiver-list/?entry=8450>

D.8. Medicaid Managed Care Program: Managed Care Regions

- Florida Agency for Health Care Administration. (2017, December 21). Florida Managed Medical Assistance Section 1115 Waiver. Retrieved May 2, 2018 from <https://www.medicaid.gov/medicaid/section-1115-demo/demonstration-and-waiver-list/?entry=8450>

D.9. Medicaid Managed Care Program: MMA Health Plans By Region

- Florida Agency for Health Care Administration. (2017, December 21). Florida Managed Medical Assistance Section 1115 Waiver. Retrieved May 2, 2018 from <https://www.medicaid.gov/medicaid/section-1115-demo/demonstration-and-waiver-list/?entry=8450>
- Florida Agency for Health Care Administration. (2018, April). Florida Statewide Medicaid Monthly Enrollment Report. Retrieved April 30, 2018 from http://www.fdhc.state.fl.us/medicaid/Finance/data_analytics/enrollment_report/index.shtml

D.10. Medicaid Managed Care Program: MMA Specialty Health Plans By Region

- Florida Agency for Health Care Administration. (2018, April). Florida Statewide Medicaid Monthly Enrollment Report. Retrieved April 30, 2018 from http://www.fdhc.state.fl.us/medicaid/Finance/data_analytics/enrollment_report/index.shtml
- Florida Agency for Health Care Administration. (2017, June 8). A Snapshot of the Florida Medicaid Managed Medical Assistance Program. Retrieved April 30, 2018 from https://ahca.myflorida.com/Medicaid/statewide_mc/pdf/mma/SMMC_MMA_Snapshot.pdf

Sources

D.11. Medicaid Managed Care Program: MMA SMI Specialty Plan

- Florida Agency for Health Care Administration. (2018, April). Florida Statewide Medicaid Monthly Enrollment Report. Retrieved April 30, 2018 from http://www.fdhc.state.fl.us/medicaid/Finance/data_analytics/enrollment_report/index.shtml
- Florida Agency for Health Care Administration. (2017, June 8). A Snapshot of the Florida Medicaid Managed Medical Assistance Program. Retrieved April 30, 2018 from https://ahca.myflorida.com/Medicaid/statewide_mc/pdf/mma/SMMC_MMA_Snapshot.pdf
- Florida Agency for Health Care Administration. (2016, November 3). MMA Specialty Plans. Retrieved May 2, 2018 from https://ahca.myflorida.com/medicaid/statewide_mc/pdf/mma/Specialty_Plans_110316.pdf
- Florida Agency for Health Care Administration. (2017, June). SMI Model Contract. Retrieved May 2, 2018 from http://www.fdhc.state.fl.us/medicaid/statewide_mc/mma_plans_mc.shtml

D.12. Medicaid Managed Care Program: Long-Term Care Program

- Florida Agency for Health Care Administration. (2017, March 7). A Snapshot of the Florida Medicaid Long-Term Care Program. Retrieved April 30, 2018 from https://ahca.myflorida.com/Medicaid/statewide_mc/pdf/LTC/SMMC_LTC_Snapshot.pdf
- Florida Agency for Health Care Administration. (2018, February 14). Florida Long-Term Managed Care Section 1915 (b) Waiver. Retrieved May 2, 2018 from <https://www.medicaid.gov/medicaid/section-1115-demo/demonstration-and-waiver-list/?entry=24301>
- Florida Agency for Health Care Administration. (2018, April). Florida Statewide Medicaid Monthly Enrollment Report. Retrieved April 30, 2018 from http://www.fdhc.state.fl.us/medicaid/Finance/data_analytics/enrollment_report/index.shtml

D.13. Medicaid Managed Care Program: LTC Plans By Region

- Florida Agency for Health Care Administration. (2017, March 7). A Snapshot of the Florida Medicaid Long-Term Care Program. Retrieved April 30, 2018 from https://ahca.myflorida.com/Medicaid/statewide_mc/pdf/LTC/SMMC_LTC_Snapshot.pdf
- Florida Agency for Health Care Administration. (2018, April). Florida Statewide Medicaid Monthly Enrollment Report. Retrieved April 30, 2018 from http://www.fdhc.state.fl.us/medicaid/Finance/data_analytics/enrollment_report/index.shtml

D.14. Medicaid Managed Care Program: Behavioral Health Benefits

- Florida Agency for Health Care Administration. (2017, June). Managed Medical Assistance Plans Prior Model Contracts. Retrieved May 2, 2018 from http://www.fdhc.state.fl.us/medicaid/statewide_mc/mma_plans_mc.shtml
- Florida Agency for Health Care Administration. (2017, January). Community Behavioral Health Services Fee Schedule. Retrieved May 2, 2018 from https://ahca.myflorida.com/medicaid/review/Reimbursement/Community_Behavioral_Health_Services.pdf
- Florida Agency for Health Care Administration. (2018, March). Medicaid and the Opioid Crisis. Retrieved May 2, 2018 from https://ahca.myflorida.com/medicaid/mcac/docs/2018-03-20_Meeting/Opioid_Presentation_MCAC_032018.pdf

Sources

D.15. Medicaid Managed Care Program: SMI Population

- Florida Agency for Health Care Administration. (2017, December 21). Florida Managed Medical Assistance Section 1115 Waiver. Retrieved May 2, 2018 from <https://www.medicaid.gov/medicaid/section-1115-demo/demonstration-and-waiver-list/?entry=8450>
- Florida Agency for Health Care Administration. (2018, April). Florida Statewide Medicaid Monthly Enrollment Report. Retrieved April 30, 2018 from http://www.fdhc.state.fl.us/medicaid/Finance/data_analytics/enrollment_report/index.shtml

D.16. Medicaid Program: Care Coordination Initiatives

- Florida Agency for Health Care Administration. Patient-Centered Medical Home Resource Information. Retrieved May 2, 2018 from http://ahca.myflorida.com/medicaid/statewide_mc/Patient.shtml

D.17. Medicaid Program Care Management and Demonstration Waivers

- Centers for Medicare and Medicaid Services. Demonstrations and Waivers. Retrieved May 2, 2018 from https://www.medicaid.gov/medicaid-chip-program-information/by-topics/waivers/waivers_faceted.html

D.18. Medicaid Program: Section 1915 (c) HCBS Waivers

- Centers for Medicare and Medicaid Services. Demonstrations and Waivers. Retrieved May 2, 2018 from https://www.medicaid.gov/medicaid-chip-program-information/by-topics/waivers/waivers_faceted.html

D.19. Medicaid Program Initiatives

- Florida Agency for Health Care Administration. (2018, April). Florida Statewide Medicaid Monthly Enrollment Report. Retrieved April 30, 2018 from http://www.fdhc.state.fl.us/medicaid/Finance/data_analytics/enrollment_report/index.shtml
- Florida Agency for Health Care Administration. (2018, April 24). Awards Included in the Intent to Award. Retrieved May 3, 2018 from http://ahca.myflorida.com/medicaid/statewide_mc/pdf/Intent_To_Award_Webpost.pdf
- Florida Agency for Health Care Administration. (2017, October 10). Statewide Medicaid Managed Care Re-Procurement Update. Retrieved May 3, 2018 from http://www.fdhc.state.fl.us/Medicaid/recent_presentations/October_2017/SMMC_Procurement_Update_HHS_Final.pdf
- Florida Agency for Health Care Administration. (2017, July). Solicitation AHCA ITN 001-17/18- Region 1. Retrieved May 3, 2018 from http://www.myflorida.com/apps/vbs/adoc/F9768_AHCAITN0011718Region1.pdf
- Florida Agency for Health Care Administration. SMMC Reprocurement. Retrieved May 3, 2018 from http://ahca.myflorida.com/medicaid/statewide_mc/smmc_re-procure.shtml

Sources

D.20. Medicaid Managed Care Program: Contract Awards By Region

- Florida Agency for Health Care Administration. (2018, April 24). Awards Included in the Intent to Award. Retrieved May 3, 2018 from http://ahca.myflorida.com/medicaid/statewide_mc/pdf/Intent_To_Award_Webpost.pdf

D.21. Medicaid Managed Care Program: Specialty Plan Contract Awards By Region

- Florida State Legislature. (2017). The 2017 Florida Statutes Chapter 409. Retrieved May 3, 2018 from http://www.leg.state.fl.us/statutes/index.cfm?App_mode=Display_Statute&Search_String=&URL=0400-0499/0409/Sections/0409.981.html
- Florida Agency for Health Care Administration. (2018, April 24). Awards Included in the Intent to Award. Retrieved May 3, 2018 from http://ahca.myflorida.com/medicaid/statewide_mc/pdf/Intent_To_Award_Webpost.pdf

E. State Behavioral Health Administration & Finance System

E.1. Substance Abuse & Mental Health Office Governance: Organization Chart

- Florida Department of Children and Families. (2018, April 6). Department of Children and Families Organizational Chart. Retrieved April 27, 2018 from <https://www.dcf.state.fl.us/admin/docs/orgchart.pdf>

E.2. Substance Abuse & Mental Health Office Governance: Key Leadership

- Florida Department of Children and Families. (2018, April 6). Department of Children and Families Organizational Chart. Retrieved April 27, 2018 from <https://www.dcf.state.fl.us/admin/docs/orgchart.pdf>

E.3. Mental Health & Addiction Hospital Bed Distribution

- OPEN MINDS. (2017, May). Hospital Data Base.

E.4. State Psychiatric Institutions

- Florida Department of Management Services. (2017, September 18). Department of Children and Families Expenditures By Issue and Appropriation Category. Retrieved April 27, 2018 from <http://floridafiscalportal.state.fl.us/Document.aspx?ID=17138&DocType=PDF>
- Florida Department of Children and Families. State Mental Health Treatment Facilities. Retrieved April 27, 2018 from <http://myflfamilies.com/service-programs/mental-health/state-mental-health-treatment-facilities>

E.5. State Psychiatric Institution: Catchment Areas

- Florida Department of Children and Families. Circuits and Regions. Retrieved April 27, 2018 from <http://www.dcf.state.fl.us/facilities/fsh/docs/catchments.pdf>

Sources

F. State Behavioral Health Stakeholder Organizations

F.1. Accountable Care Organizations

- *OPEN MINDS*. (2018). Stakeholder Database.

F.2. Accountable Care Organizations: Continued

- *OPEN MINDS*. (2018). Stakeholder Database.