

The PsychU Guide To The West Virginia Mental Health System

This resource is provided for informational purposes only and is not intended as reimbursement or legal advice.

You should seek independent, qualified professional advice to ensure that your organization is in compliance with the complex legal and regulatory requirements governing health care services, and that treatment decisions are made consistent with the applicable standards of care.

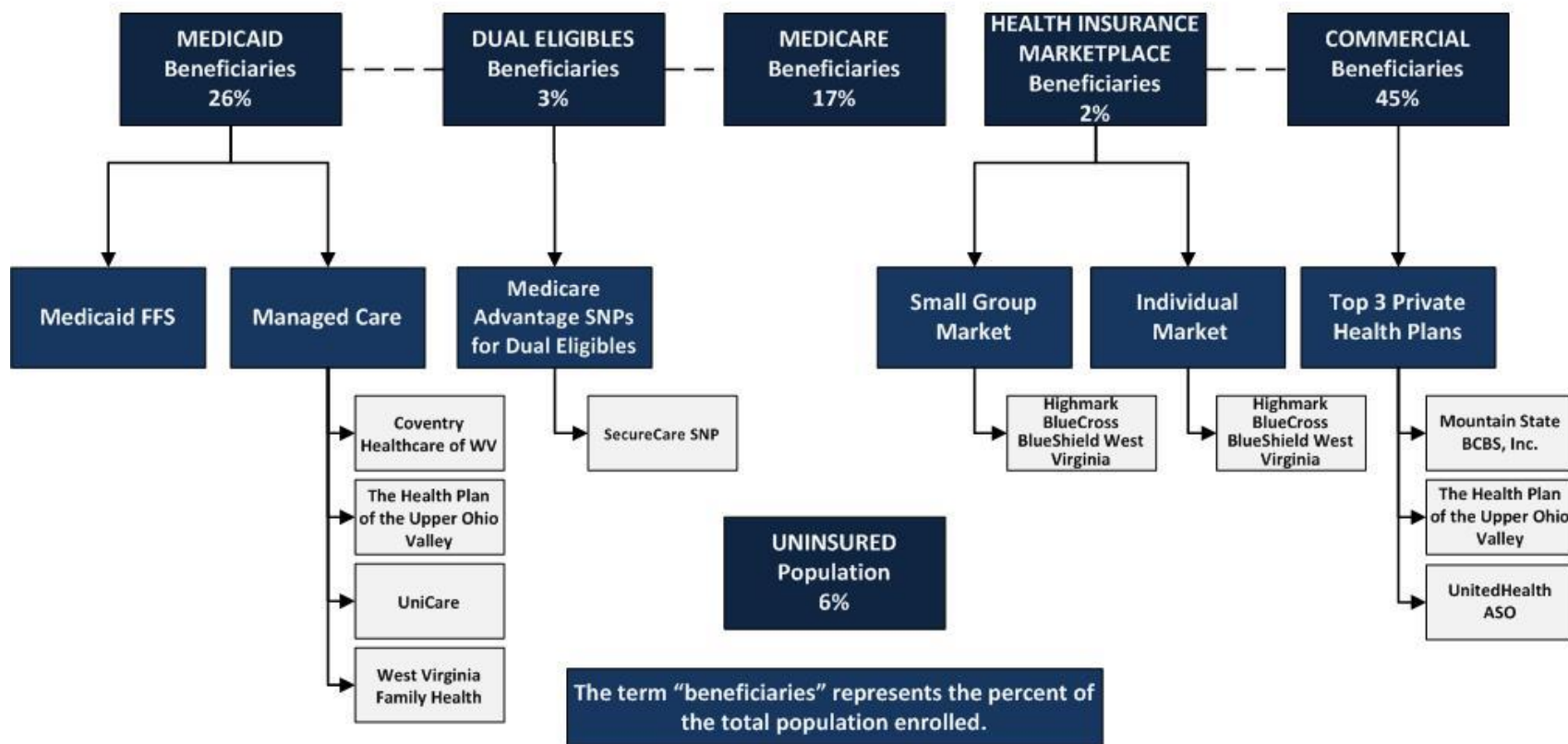
Except as otherwise indicated, the information provided is accurate to the best of Otsuka's knowledge as of February 2016.

The PsychU Guide To Mental Health Payers In West Virginia - Contents

1. Health Care Coverage Map Of West Virginia
2. Population Distribution By Payer: National vs. State
3. Largest Health Plans In West Virginia By Enrollment
4. Largest Health Plans in West Virginia By SMI Enrollment
5. West Virginia Medicaid System Overview
6. West Virginia Medicaid Governance
7. West Virginia Medicaid System Benefits
8. West Virginia Medicaid Financing & Service Delivery
9. West Virginia Medicaid Fee-For-Service
10. West Virginia Medicaid Managed Care
11. West Virginia Medicaid Medical & Health Home Initiatives
12. West Virginia State Mental Health & Addiction Treatment Department Governance
13. West Virginia State Psychiatric Institutions
14. West Virginia Accountable Care Organizations (ACOs)
15. West Virginia Health Care Reform Initiatives
16. West Virginia Health Insurance Marketplace Plans
17. West Virginia Essential Health Benefit Benchmark Plan

1. Health Care Coverage Map Of West Virginia

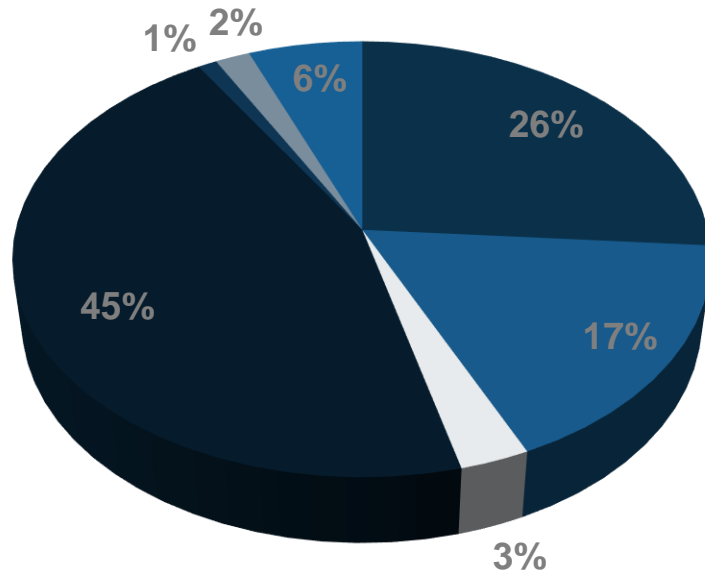
Total Population: 1,825,500
SMI Population: 78,741



2. Population Distribution By Payer: National vs. State

West Virginia

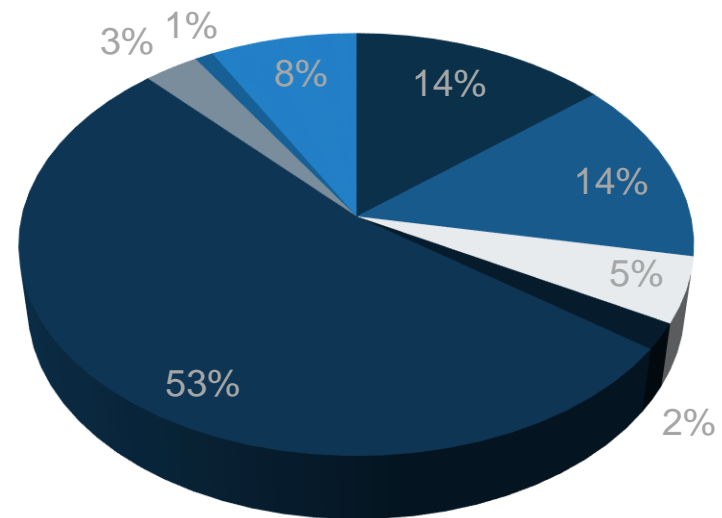
- Medicaid 26%
- Medicare 17%
- Dual Eligibles 3%
- Commercial 45%
- Other Public 1%
- Health Insurance Marketplace 2%
- Uninsured 6%



Total Population: 1,825,500

National

- Medicaid 14%
- Medicare 14%
- Medicaid Expansion 5%
- Dual Eligibles 2%
- Commercial 53%
- Health Insurance Marketplace 3%
- Other Public 1%
- Uninsured 8%



Total Population: 316,167,900

Based on 2014 data

3. Largest Health Plans In West Virginia By Enrollment

Plan Name	Plan Type	Enrollment*
Medicare FFS	Medicare	295,042
Mountain State BCBS, Inc.	Commercial	270,787
Medicaid FFS	Medicaid	159,200
UniCare	Medicaid	137,182
Coventry Health Care of WV	Medicaid	111,720
The Health Plan	Medicaid	68,397
The Health Plan of the Upper Ohio Valley	Commercial	67,400
Humana	Medicare	66,870
WV Family Health	Medicaid	53,945
UnitedHealth	Commercial Administrative Insurance Organization (ASO)	51,315

*Based on enrollment as of fourth quarter 2014

4. Largest Health Plans In West Virginia By SMI Enrollment

Plan Name	Plan Type	Enrollment*	Estimated SMI Enrollment
Medicare FFS	Medicare	295,042	25,669
Medicaid FFS	Medicaid	159,200	7,960
Unicare	Medicaid	137,182	6,859
Humana	Medicare	66,870	5,818
Coventry Health Care of WV	Medicaid	111,720	5,586
The Health Plan	Medicaid	68,397	3,420
WV Family Health	Medicaid	53,945	2,697
Mountain State BCBS, Inc.	Commercial	270,787	1,896
Coventry Health and Life Insurance Company	Medicare	6,923	602
The Health Plan the Upper Ohio Valley	Commercial	67,400	472

*Based on enrollment as of fourth quarter 2014

5. West Virginia Medicaid System Overview

Medicaid System Governance

State Medicaid Director	Cindy Beane
State Medicaid Director reports to	Jeremiah Samples, Deputy Secretary; Public Health, Insurance, and Strategic Planning; Department of Health and Human Resources

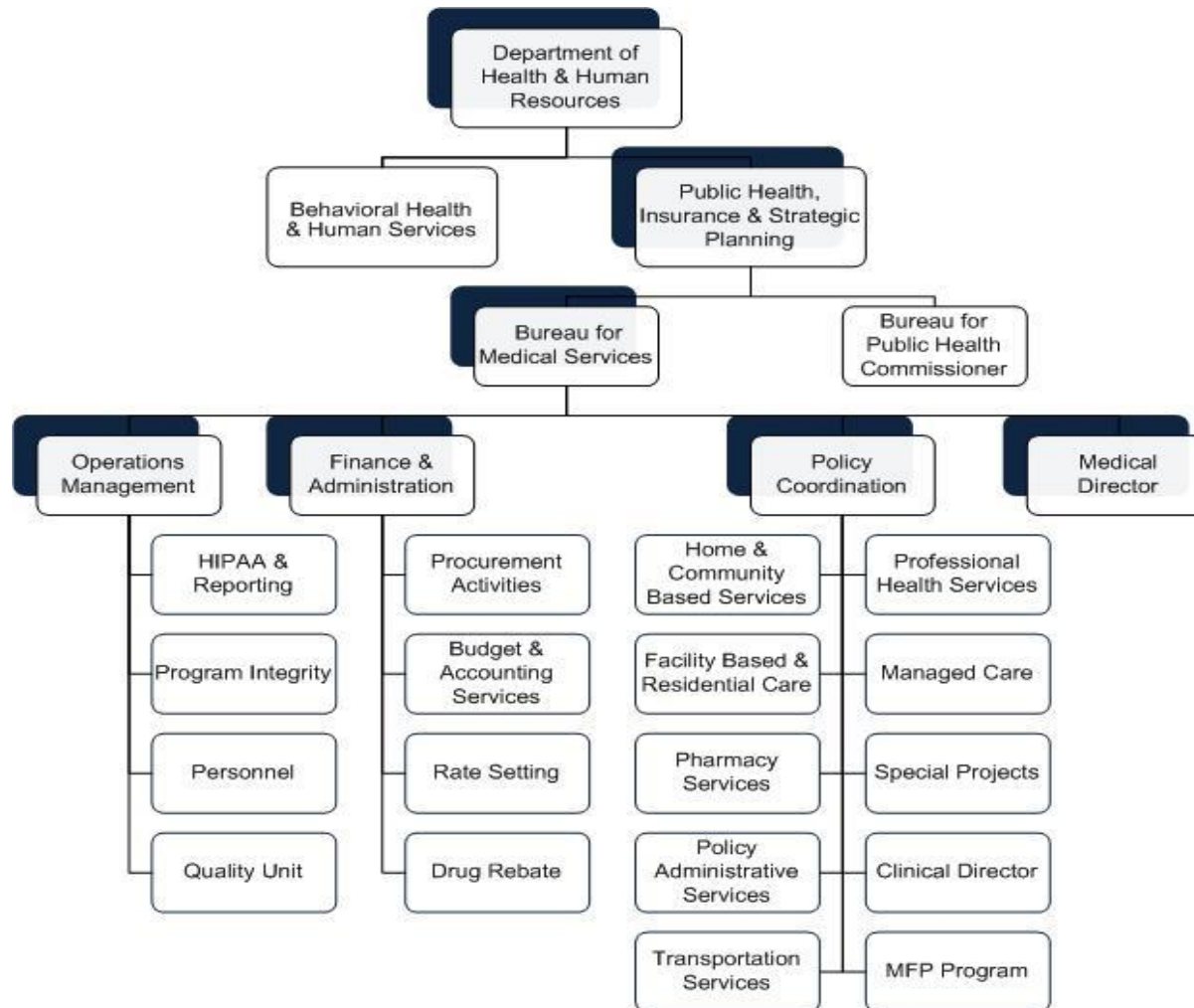
Medicaid Financial Delivery System

State participating in Medicaid expansion?	Yes
Is managed care mandatory for populations with SMI?	No
Is managed care mandatory for dual eligibles?	No
Total Medicaid population distribution	30% in FFS 70% in Managed Care
Medicaid beneficiaries with SMI: Primary service system	FFS enrollment is mandatory for individuals with SMI who have a disability determination. Managed care enrollment is mandatory for individuals with SMI who do not have a disability determination. Because the SMI population should have a disability determination, the majority of individuals with SMI are enrolled in FFS.

Medicaid Financing & Risk Arrangements: Behavioral Health

Traditional Behavioral Health Services	Included in the MCO's capitation rate
Specialty Behavioral Health Services	
Pharmaceuticals	

6. West Virginia Medicaid Governance



6. West Virginia Medicaid Governance

State Agency Responsible For Uninsured Citizens & Delivery System Model

Physical Health Services	Safety-net services are provided by the Division of Primary Care, operating under the Bureau of Public Health within the West Virginia Department of Health and Human Resources (DHHR).
Mental Health Services	Safety-net services are provided by the West Virginia Bureau for Behavioral Health and Health Facilities (BBHBF) within the DHHR.
Addiction Treatment Services	Safety-net services are provided by the West Virginia Division on Alcoholism and Drug Abuse, operating under the BBHBF.

7. West Virginia Medicaid System Benefits

Federally Mandated Services

1. Inpatient hospital services other than services in an institution for mental disease
2. Outpatient hospital services
3. Rural Health Clinic services
4. Federally Qualified Health Center services
5. Laboratory and X-ray services
6. Nursing facilities for individuals 21 and over
7. Early and Periodic Screening and Diagnosis and Treatment (EPSDT)
8. Family planning services and supplies for individuals of child-bearing age
9. Physician services
10. Medical and surgical services of a dentist
11. Home health services
12. Nurse midwife services
13. Nurse practitioner services
14. Pregnancy services, including tobacco cessation programs
15. Free standing birth centers
16. Non-emergency transportation to medical care

West Virginia's Optional Services

1. Podiatrists' services
2. Optometrists' services
3. Chiropractors' services
4. Other practitioners' services
5. Private duty nursing
6. Clinic services
7. Dental services
8. Physical and occupational therapy
9. Services for individuals with speech, hearing, and language disorders
10. Prescribed drugs
11. Dentures, prosthetic devices, and eyeglasses
12. Preventive and rehabilitative services
13. Intermediate care and public institution services
14. Inpatient psychiatric facility for patients under 22 years of age
15. Hospice care
16. Case management
17. Respiratory care
18. Nursing facility services for patients under 21 years of age
19. Personal care services

8. West Virginia Medicaid Financing & Service Delivery

Medicaid System Characteristics		
Characteristics	Medicaid Fee-For-Service (FFS)	Medicaid Managed Care (MC)
Enrollment	159,200	371,244
SMI Enrollment	FFS enrollment is mandatory for individuals with SMI who have a disability determinations. Managed care enrollment is mandatory for individuals with SMI who do not have a disability determination. Because the SMI population should have a disability determination, the majority of individuals with SMI are enrolled in FFS.	
Management	<ul style="list-style-type: none"> Bureau of Medical Services APS Healthcare serves as administrative services organization (ASO) 	Four managed care organizations (MCOs)
Payment Model	Fee-for-service	Full-risk capitation
Geographic Service Area	Statewide	Statewide

Total Medicaid 530,444 | Total Medicaid With SMI 26,522

9. West Virginia Medicaid Fee-For-Service

Fee-for-service enrollment as of January 2016 was 159,200.

Mandatory Enrollment In FFS (excluded from managed care)

1. Individuals dually eligible for Medicaid and Medicare
2. Enrollees in home and community based services waiver programs
3. Long-term care residents
4. Medicaid enrollees with a disability determination

Optional Enrollment In FFS

None

9. West Virginia Medicaid FFS Program: Behavioral Health Overview

FFS Behavioral Health Benefits

- Inpatient and outpatient mental health services
- Inpatient and outpatient substance abuse services
- Testing, evaluation, and screening
- Coordinated care and plan development
- Counseling
- Individual, family, and group therapy
- I/DD day treatment
- Pharmacologic management
- Targeted case management
- Behavioral health rehabilitation and clinic services
- Psychiatric residential treatment services
- Therapeutic behavioral services
- Telehealth services



9. West Virginia Medicaid FFS Program: SMI Population

- FFS enrollment is mandatory for individuals with SMI who have a disability determination.
- Managed care enrollment is mandatory for individuals with SMI who do not have a disability determination.
- Because the SMI population should have a disability determination, the majority of individuals with SMI are enrolled in FFS.



10. West Virginia Medicaid Managed Care

- Managed care enrollment as of January 2016 was 371,244.
- West Virginia's Medicaid managed care program is called Mountain Health Trust.
- Managed care enrollment became mandatory statewide in FY 2016. Medicaid expansion enrollees were moved to managed care in July 2015.
- There are four managed care plans available statewide basis. Enrollees can choose from any of the four plans:
 - Coventry Health Care of West Virginia
 - Health Plan of the Upper Ohio Valley
 - UniCare
 - West Virginia Family Health
- WV withholds 5% of the managed care capitation rate, which the MCO can recoup by meeting quality standards.
- West Virginia has obtained CMS approval to transition its blind and disabled beneficiaries to managed care. Implementation is planned for FY 2017.

10. West Virginia Medicaid Managed Care: Behavioral Health Overview

- Behavioral health services were integrated into managed care in July 2015.
- Behavioral health services not covered by the MCO are covered FFS by the state.

Behavioral Health Services Included In The MCO's Capitation Rate

1. Inpatient and outpatient mental health services
2. Inpatient and outpatient substance abuse services
3. Pharmacologic management
4. Targeted case management
5. Behavioral health rehabilitation and clinic services
6. Psychological services
7. Court-ordered services that the MCO normally provides

Behavioral Health Services Covered FFS By The State

1. Children's residential treatment facility services
2. Services provided under waiver programs for aged and disabled persons or for persons with developmental disabilities

10. West Virginia Medicaid Managed Care: SMI Population

- FFS enrollment is mandatory for individuals with SMI who have a disability determination.
- Managed care enrollment is mandatory for individuals with SMI who do not have a disability determination.
- Because the SMI population should have a disability determination, the majority of individuals with SMI are enrolled in FFS.

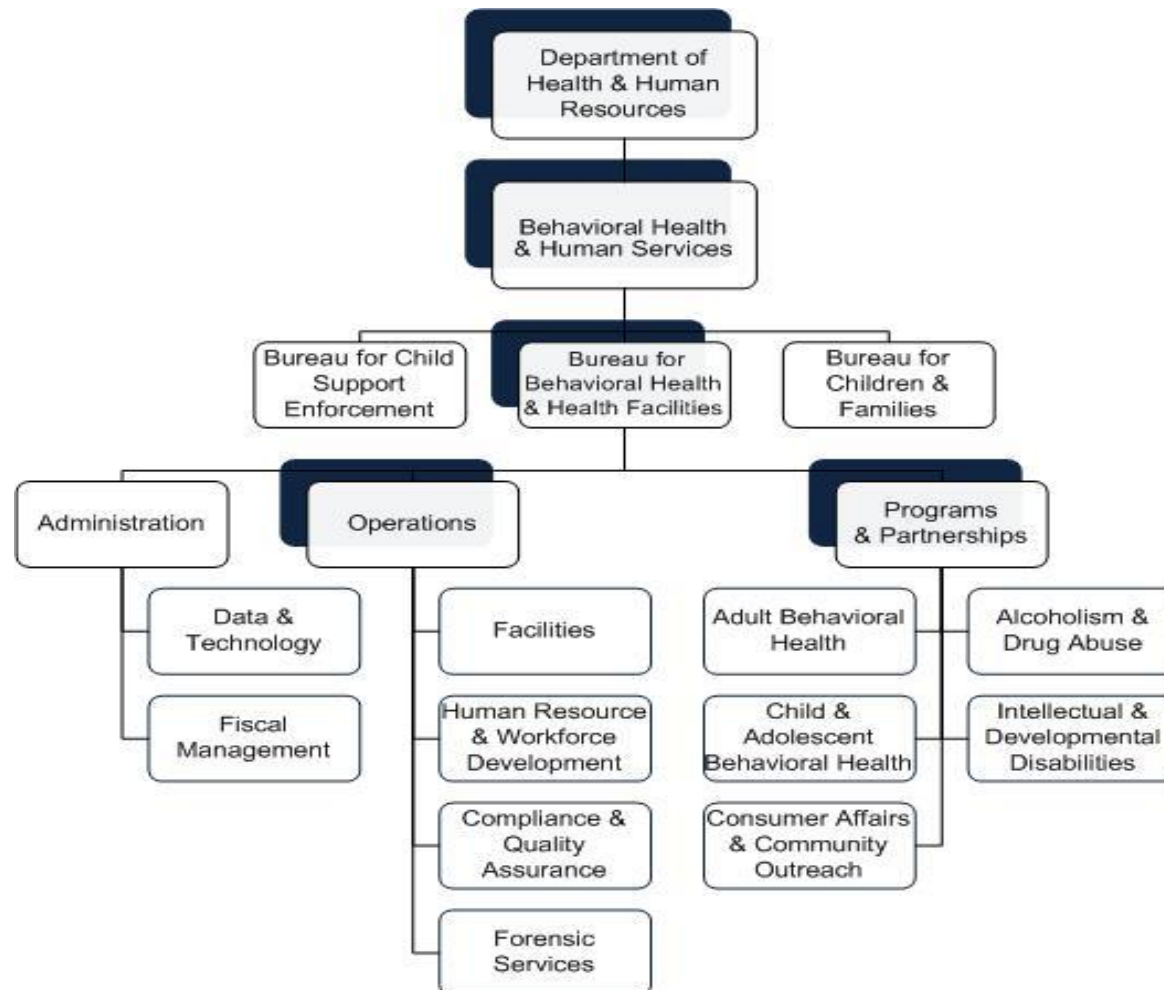


11. West Virginia Medicaid Medical & Health Home Initiatives

- West Virginia implemented its health home initiative in July 2014.
- The program targets Medicaid beneficiaries with bipolar disorder who have or who are at risk of contracting hepatitis B and/or C.



12. West Virginia State Mental Health & Addiction Treatment Department Governance



12. West Virginia State Mental Health & Addiction Treatment Department Governance

Name	Position	Department
Karen Bowling	Secretary	Department of Health and Human Resources
Harold Clifton	Deputy Secretary	Behavioral Health and Human Services
Vickie Jones	Commissioner	Bureau for Behavioral Health and Health Facilities
Shevona Lusk	Deputy Commissioner	Operations Section
Kimberly Walsh	Deputy Commissioner	Programs and Partnerships Section
Kathy Paxton	Deputy Commissioner	Division on Alcoholism and Drug Abuse

13. West Virginia State Psychiatric Institutions

Institution Name	Location	Beds	FY 2015 Admissions	FY 2015 Discharges	FY 2015 Average Daily Census
Mildred Mitchell Bateman Hospital	Huntington	110	510	493	103
William R. Sharpe Jr. Hospital	Weston	150	436	539	136
Total		260	946	1032	239

14. West Virginia Accountable Care Organizations (ACOs)

Medicare Shared Savings Program

1. Care Coordination Services, LLC
2. Loudoun Medical Group ACO, LLC
3. Maryland ACO of Western Maryland, LLC, dba, Western Maryland Accountable Care Organization
4. Physicians Accountable Care Solutions, LLC
5. Signature Partners in Health, LLC
6. THP-Meritus ACO, LLC
7. Western Maryland Physician Network, LLC

15. West Virginia Health Care Reform Initiatives

Medicaid Expansion	
Choose to participate in expansion?	Yes
Medicaid Eligibility Income Limit	133% of FPL Note: The PPACA requires that 5% of income be disregarded with determining eligibility
Specific Legislation Enacted	None

Health Insurance Marketplace	
Type of Marketplace	Federal
Individual Enrollment Contact	www.healthcare.gov
	1-800-318-2596
Small Business Enrollment Contact	www.healthcare.gov/small-businesses
	1-800-706-7893

16. West Virginia Health Insurance Marketplace Plans

Individual Market

Highmark BlueCross BlueShield
West Virginia

Small Group Market

Highmark BlueCross BlueShield
West Virginia

17. West Virginia Essential Health Benefit Benchmark Plan

Plan Type	Plan from largest small group product, Preferred Provider Organization
Issuer Name	Highmark Blue Cross Blue Shield West Virginia
Plan Name	Super Blue Plus 2000 1000 Ded
Supplemented Categories (Supplementary Plan Type)	<ul style="list-style-type: none">• Pediatric Oral (State CHIP)• Pediatric Vision (FEDVIP)
Habilitative Services Defined By Benchmark Plan	No; when the benchmark plan and state do not define habilitative services the benefit is covered using the federal definition: provides parity that are similar in scope, amount, and duration to benefits covered for rehabilitative services.
Biologically Based Mental Illness	Covered the same as any other medical benefit as described in the 2008 Mental Health Parity and Addiction Equity Act

17. West Virginia Essential Health Benefit Benchmark Plan: Behavioral Health Benefits

Benefit		Limit On Service	Exclusions (apply to all benefits)
Non-Biologically Based Mental Illness	Mental/Behavioral Health Outpatient Services	None	<ul style="list-style-type: none"> Services beyond the evaluation or diagnosis of mental deficiency, retardation, autism, learning disabilities or developmental disabilities are not covered, except as mandated by state or federal code. Mental illness that cannot be treated is not covered. All covered services must be medically necessary unless otherwise specified.
	Mental/Behavioral Health Inpatient Services	None	
	Substance Abuse Disorder Outpatient Services	None	
	Substance Abuse Disorder Inpatient Services	None	

Sources

1. West Virginia Health Care Coverage Map

1. The Henry J. Kaiser Foundation. (2014). State Health Facts: Health Insurance Coverage of the Total Population. Retrieved January 6, 2016 from <http://kff.org/other/state-indicator/total-population/>
2. Thierer, C. (2015, August 19). QHP Landscape Individual Market Medical. Retrieved January 20, 2016 from <https://data.healthcare.gov/dataset/QHP-Landscape-Individual-Market-Medical/b8in-sz6k>
3. Thierer, C. (2014, August 20). QHP Landscape SHOP Market Medical. Retrieved January 20, 2016 from <https://data.healthcare.gov/dataset/QHP-Landscape-SHOP-Market-Medical/ss3e-3mza>
4. West Virginia Department of Health and Human Resources. (2016, January 4). E-mail to OPEN MINDS.

2. West Virginia Population Distribution By Payer: National vs. State

1. Medicaid and CHIP Payment and Access Commission. (2015, December). MACStats Medicaid and CHIP Data Book. Retrieved January 6, 2016 from <https://www.macpac.gov/wp-content/uploads/2015/11/MACStats-Medicaid-and-CHIP-Data-Book-December-2015.pdf>
2. The Henry J. Kaiser Foundation. (2014). State Health Facts: Health Insurance Coverage of the Total Population. Retrieved January 6, 2016 from <http://kff.org/other/state-indicator/total-population/>
3. Medicaid and CHIP Payment and Access Commission (2015, December 1). Medicaid and CHIP Data Book. Retrieved December 29, 2015 from www.macpac.gov/wp-content/uploads/2015/11/MACStats-Medicaid-and-CHIP-Data-Book-December-2015.pdf
4. West Virginia Bureau of Medical Services. (2016, January 4). E-mail to OPENMINDS.
5. The Kaiser Foundation definition for Medicaid includes dual eligible individuals. To avoid double counting, the number of dual eligibles was subtracted from the total number of Medicaid enrollees.
6. Other Public refers to military and Veteran's Administration coverage.

Sources

3. Largest Health Plans In West Virginia By Enrollment

1. Centers for Medicare and Medicaid Services. (2013). Medicare Geographic Variation State/County Table- All Beneficiaries. Retrieved December 16, 2015 from http://www.cms.gov/Research-Statistics-Data-and-Systems/Statistics-Trends-and-Reports/Medicare-Geographic-Variation/GV_PUF.html
2. Health Plans USA. (2014). Subscription Database. Available from <http://www.markfarrah.com/products/health-plans-usa.aspx>
3. West Virginia Department of Health and Human Resources. (2016, January 4). E-mail to OPEN MINDS.

4. Largest Health Plans in West Virginia By SMI Enrollment

1. Centers for Medicare and Medicaid Services. (2013). Medicare Geographic Variation State/County Table- All Beneficiaries. Retrieved December 16, 2015 from http://www.cms.gov/Research-Statistics-Data-and-Systems/Statistics-Trends-and-Reports/Medicare-Geographic-Variation/GV_PUF.html
2. Health Plans USA. (2014). Subscription Database. Available from <http://www.markfarrah.com/products/health-plans-usa.aspx>
3. West Virginia Department of Health and Human Resources. (2016, January 4). E-mail to OPEN MINDS.

5. West Virginia Medicaid System Overview

- Compiled from information found throughout the profile.

6. West Virginia Medicaid Governance

1. West Virginia Bureau for Medical Services. (2015, January). State Fiscal Year 2014 Annual Report. Retrieved January 18, 2016 from <http://www.dhhr.wv.gov/bms/BMS PUB/Documents/BMS%20Annual%20Report%202014.pdf>
2. West Virginia Bureau for Medical Services. Contact Information. Retrieved January 19, 2016 from <http://www.dhhr.wv.gov/bms/About%20Us/Pages/Contact-Information.aspx>

Sources

7. West Virginia Medicaid System Benefits

1. Centers for Medicare and Medicaid Services. Medicaid Benefits. Retrieved January 19, 2016 from <http://www.medicaid.gov/Medicaid-CHIP-Program-Information/By-Topics/Benefits/Medicaid-Benefits.html>
2. State of West Virginia. (2014). West Virginia State Medicaid Plan. Retrieved January 19, 2016 from <http://www.dhhr.wv.gov/bms/CMS/SMP/Pages/WV-State-Medicaid-Plan.aspx>

8. West Virginia Medicaid Financing & Service Delivery

1. West Virginia Department of Health and Human Resources. (2015, September). Managed Care in WV: DHHR's Way Forward. Retrieved January 18, 2016 from http://www.legis.state.wv.us/legisdocs/reports/agency/H01_FY_2015_3009.pdf
2. West Virginia Department of Health and Human Resources. (2014, March 31). Mountain Health Trust Waiver Renewal. Retrieved January 18, 2016 from <http://www.dhhr.wv.gov/bms/CMS/SMP/Documents/SPAs/SPAs%202015/Managed%20Care%20SPA/Highlighted%20Updates.pdf>
3. West Virginia Department of Health and Human Resources. (2016, January 4). E-mail to *OPEN MINDS*.

9. West Virginia Medicaid Fee-For-Service

1. West Virginia Department of Health and Human Resources. (2014, March 31). Mountain Health Trust Waiver Renewal. Retrieved January 18, 2016 from <http://www.dhhr.wv.gov/bms/CMS/SMP/Documents/SPAs/SPAs%202015/Managed%20Care%20SPA/Highlighted%20Updates.pdf>
2. West Virginia Department of Health and Human Resources. (2016, January 4). E-mail to *OPEN MINDS*.

9. West Virginia Medicaid FFS Program: Behavioral Health Overview

1. West Virginia Department of Health and Human Resources (2015, December 1). Medicaid Provider Manual. Retrieved January 25, 2016 from <http://www.dhhr.wv.gov/bms/Pages/Manuals.aspx>
2. West Virginia Department of Health and Human Resources (2015, December 1). FY2016 Medicaid Managed Care Organization Contract. Retrieved January 25, 2016 from <http://www.dhhr.wv.gov/bms/Members/Managed%20Care/Documents/Contracts/SFY%202016%20Managed%20Care%20Contract.pdf>

Sources

9. West Virginia Medicaid FFS Program: SMI Population

1. West Virginia Department of Health and Human Resources. (2014, March 31). Mountain Health Trust Waiver Renewal. Retrieved January 18, 2016 from <http://www.dhhr.wv.gov/bms/CMS/SMP/Documents/SPAs/SPAs%202015/Managed%20Care%20SPA/Highlighted%20Updates.pdf>

10. West Virginia Medicaid Managed Care

1. West Virginia Department of Health and Human Resources. (2014, March 31). Mountain Health Trust Waiver Renewal. Retrieved January 18, 2016 from <http://www.dhhr.wv.gov/bms/CMS/SMP/Documents/SPAs/SPAs%202015/Managed%20Care%20SPA/Highlighted%20Updates.pdf>
2. West Virginia Department of Health and Human Resources (2015, December 1). FY2016 Medicaid Managed Care Organization Contract. Retrieved January 25, 2016 from <http://www.dhhr.wv.gov/bms/Members/Managed%20Care/Documents/Contracts/SFY%202016%20Managed%20Care%20Contract.pdf>
3. West Virginia Department of Health and Human Resources. (2015, September). Managed Care in WV: DHHR's Way Forward. Retrieved January 18, 2016 from http://www.legis.state.wv.us/legisdocs/reports/agency/H01_FY_2015_3009.pdf
4. West Virginia Department of Health and Human Resources. (2016, January 4). E-mail to OPEN MINDS.

10. West Virginia Medicaid Managed Care Program: Behavioral Health Overview

1. West Virginia Department of Health and Human Resources (2015, December 1). FY2016 Medicaid Managed Care Organization Contract. Retrieved January 25, 2016 from <http://www.dhhr.wv.gov/bms/Members/Managed%20Care/Documents/Contracts/SFY%202016%20Managed%20Care%20Contract.pdf>
2. West Virginia Department of Health and Human Resources (2015, December 1). Medicaid Provider Manual. Retrieved January 25, 2016 from <http://www.dhhr.wv.gov/bms/Pages/Manuals.aspx>

10. Medicaid Managed Care Program: SMI Populations

1. West Virginia Department of Health and Human Resources. (2014, March 31). Mountain Health Trust Waiver Renewal. Retrieved January 18, 2016 from <http://www.dhhr.wv.gov/bms/CMS/SMP/Documents/SPAs/SPAs%202015/Managed%20Care%20SPA/Highlighted%20Updates.pdf>

Sources

11. West Virginia Medicaid Medical & Health Home Initiatives

1. West Virginia Bureau for Medical Services. (2015, January 27). Health Home State Plan Amendment. Retrieved January 19, 2016 from <http://www.dhhr.wv.gov/bms/WV%20Health%20Homes/approved%20amendment/Documents/042820144009%20Final%20Response%20SPA%2014-0009%20WV%20012715.pdf>
2. West Virginia Bureau for Medical Services. (2014, April 30). West Virginia Health Home Provider Qualifications and Standards for Behavioral Health Patient Populations. Retrieved January 19, 2016 from <http://www.dhhr.wv.gov/bms/WV%20Health%20Homes/ProviderInformation/Documents/WV%20Health%20Home%20Provider%20Standards%20V1%20%285%29.pdf>
3. West Virginia Bureau for Medical Services. WV Health Homes. Retrieved January 19, 2016 from <http://www.dhhr.wv.gov/bms/WV%20Health%20Homes/Pages/default.aspx>
4. West Virginia Bureau for Medical Services (2015, April). West Virginia Medicaid Provider Newsletter. Retrieved January 19, 2016 from <http://www.dhhr.wv.gov/bms/WV%20Health%20Homes/Pages/default.aspx>

12. West Virginia State Mental Health & Addiction Treatment Department Organization Chart

1. West Virginia Department of Health and Human Resources. (2015, January 14). Organization Chart. Retrieved January 19, 2016 from <http://www.dhhr.wv.gov/Documents/Secretary's%20Organizational%20Chart.pdf>
2. West Virginia Bureau for Behavioral Health and Health Facilities. About Us. Retrieved January 19, 2016 from <http://www.dhhr.wv.gov/bhhf/Sections/Pages/Sections.aspx>

12. West Virginia State Mental Health & Addiction Treatment Department Governance

1. West Virginia Department of Health and Human Resources. (2015, January 14). Organization Chart. Retrieved January 19, 2016 from <http://www.dhhr.wv.gov/Documents/Secretary's%20Organizational%20Chart.pdf>
2. West Virginia Bureau for Behavioral Health and Health Facilities. About Us. Retrieved January 19, 2016 from <http://www.dhhr.wv.gov/bhhf/Sections/Pages/Sections.aspx>

Sources

13. West Virginia State Psychiatric Institutions

1. West Virginia Health Care Authority. (2015, March 25). Annual Report 2014. Retrieved January 19, 2016 from <http://www.hca.wv.gov/data/Reports/Pages/AnnualRP2014.aspx>
2. West Virginia Department of Health and Human Resources. (2016, January 22). E-mail to *OPEN MINDS*.

14. West Virginia Accountable Care Organizations (ACOs)

- *OPEN MINDS* Database

15. West Virginia Health Care Reform Initiatives

1. The Centers for Medicare and Medicaid Services. (2014, October 1). State Medicaid and CHIP Income Eligibility Standards. Retrieved December 18, 2015 from <http://www.medicaid.gov/AffordableCareAct/Medicaid-Moving-Forward-2014/Downloads/Medicaid-and-CHIP-Eligibility-Levels-Table.pdf>
2. United States Government. (2016). Healthcare.gov. Retrieved January 20, 2016 from <https://www.healthcare.gov/>

16. West Virginia Health Insurance Marketplace Plans

1. Thierer, C. (2015, August 19). QHP Landscape Individual Market Medical. Retrieved January 20, 2016 from <https://data.healthcare.gov/dataset/QHP-Landscape-Individual-Market-Medical/b8in-sz6k>
2. Thierer, C. (2014, August 20). QHP Landscape SHOP Market Medical. Retrieved January 20, 2016 from <https://data.healthcare.gov/dataset/QHP-Landscape-SHOP-Market-Medical/ss3e-3mza>

17. West Virginia Essential Health Benefit Benchmark Plan

1. Centers for Medicare and Medicaid Services. West Virginia EHB Benchmark Plan. Retrieved January 20, 2016 from <https://www.cms.gov/CCIIO/Resources/Data-Resources/Downloads/Updated-West-Virginia-Benchmark-Summary.pdf>

17. West Virginia Essential Health Benefit Benchmark Plan: Behavioral Health Benefits

1. Centers for Medicare and Medicaid Services. Retrieved January 20, 2016 from <https://www.cms.gov/CCIIO/Resources/Data-Resources/Downloads/Updated-West-Virginia-Benchmark-Summary.pdf>