



The PsychU Guide To The Florida Mental Health System

This resource is provided for informational purposes only and is not intended as reimbursement or legal advice.

You should seek independent, qualified professional advice to ensure that your organization is in compliance with the complex legal and regulatory requirements governing health care services, and that treatment decisions are made consistent with the applicable standards of care.

Except as otherwise indicated, the information provided is accurate to the best of Otsuka's knowledge as of November 2016.

Contents

PsychU Guide To The Florida Mental Health System

A. Health Care Marketplace Overview

1. Physical Health Care Coverage Map
2. Population Demographics
3. Population Distribution By Payer: United States V. Florida
4. Largest Health Plans By Enrollment
5. Largest Health Plans By Estimated SMI Enrollment
6. Health Insurance Marketplace Overview
7. Health Insurance Marketplace Plans

B. Medicaid System Overview

8. Delivery System, Risk, & Federal Participation
9. Expansion Decision
10. Care Coordination Entities
11. The Uninsured
12. Organizational Chart
13. Key Leadership
14. Program Benefits

C. Medicaid Financing & Service Delivery System

15. Overview
16. Enrollment By Eligibility Group
17. FFS Program: Program Overview
18. FFS Program: BH Benefits
19. FFS Program: SMI Population
20. Managed Care Program: Program Overview
21. Managed Care Program: Managed Medical Assistance
22. Managed Care Program: Long-Term Care Program
23. Managed Care Program: BH Benefits
24. Managed Care Program: SMI Population
25. Care Coordination Initiatives
26. Program Waivers Impacting The SMI Population

D. Behavioral Health Administration & Finance System

27. OSAMH Organizational Chart
28. OSAMH Key Leadership
29. State Psychiatric Institutions
30. Medicare Shared Savings ACOs
31. Other Medicare ACOs
32. Commercial ACOs

Appendix A: Sources

ACOs = Accountable Care Organizations

BH = Behavioral Health

FFS = Fee-For-Service

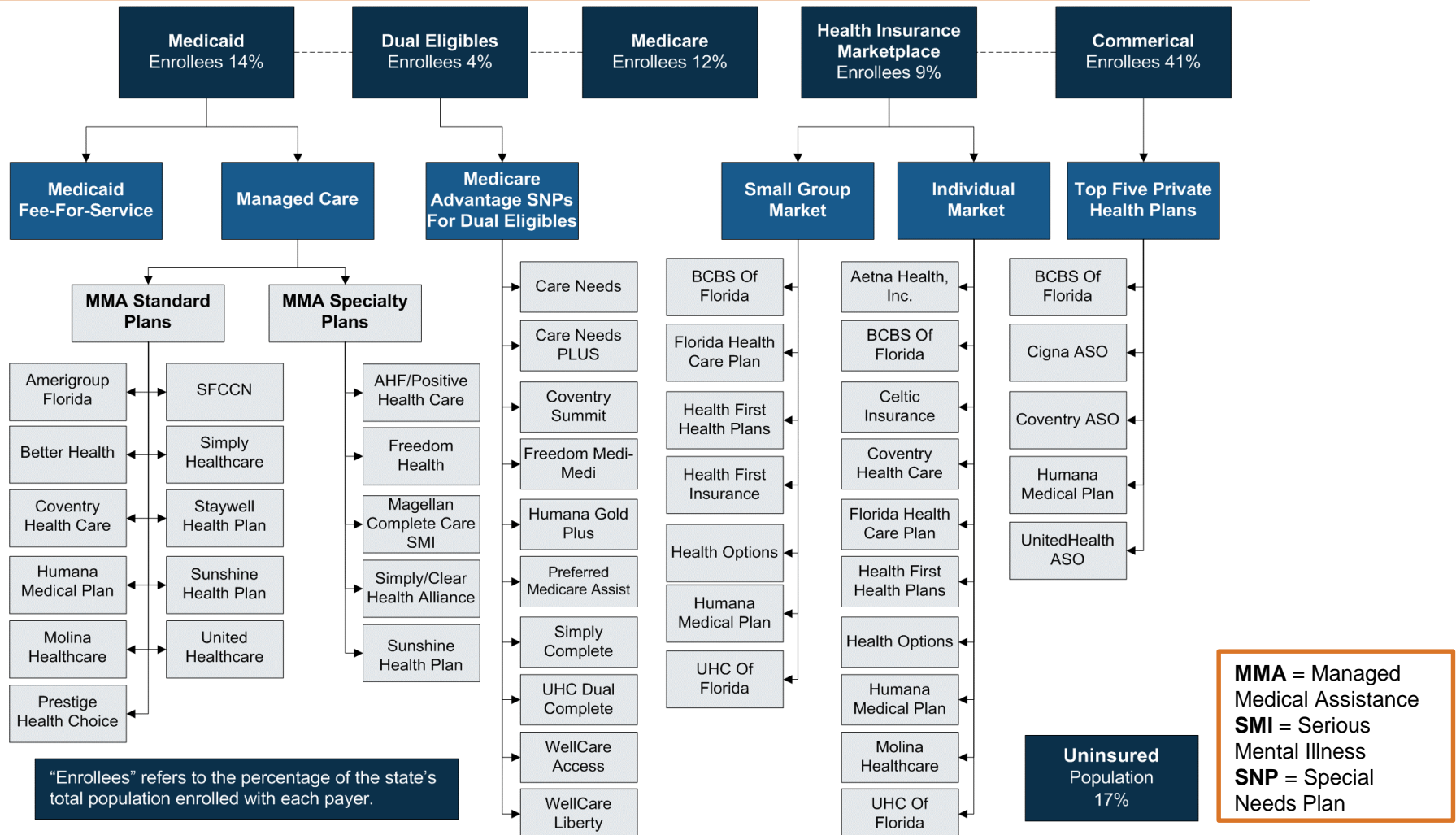
MCOs = Managed Care Organizations

OSAMH = Office Of Substance Abuse & Mental Health

SMI = Serious Mental Illness

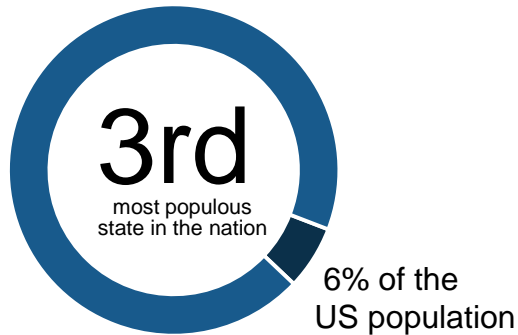
A. FLORIDA HEALTH CARE MARKETPLACE OVERVIEW

1. Physical Health Care Coverage Map

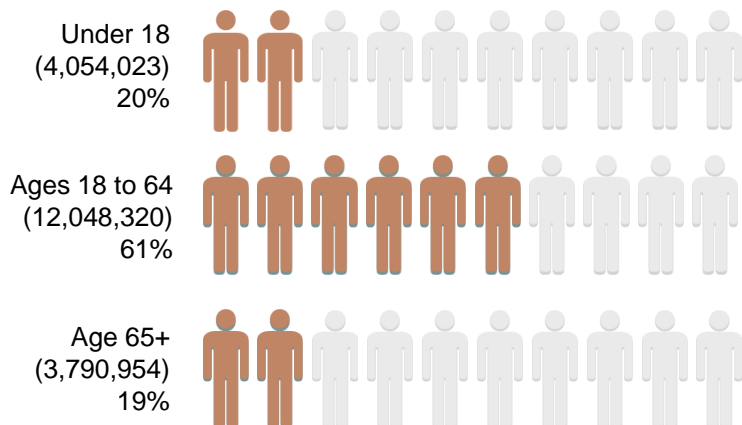


2. Population Demographics

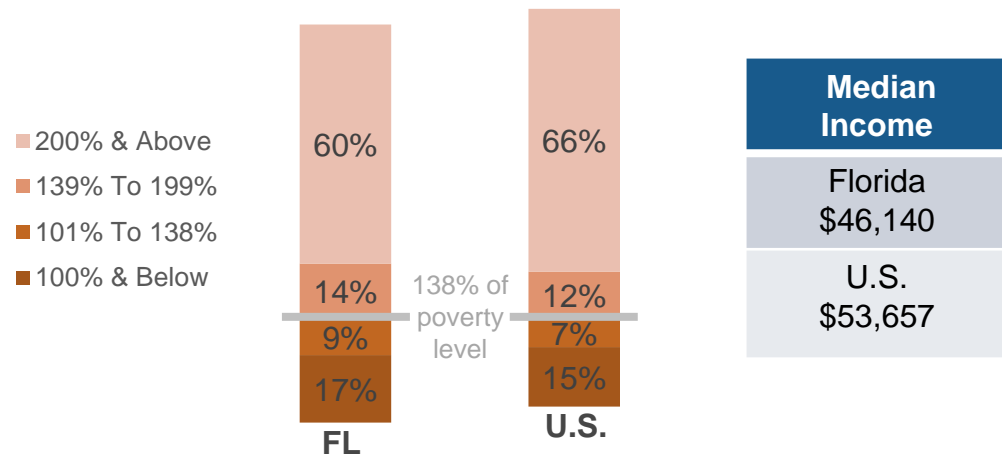
Total Florida Population - 19,893,297
SMI Population - 1,019,600



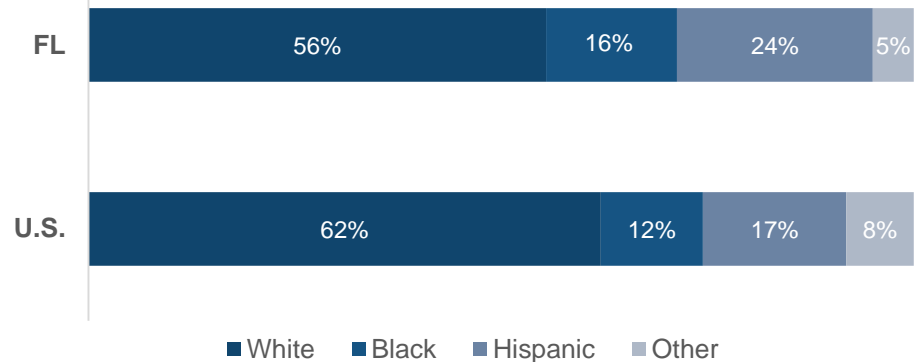
Population Distribution By Age



Population Distribution By Income To Poverty Threshold Ratio

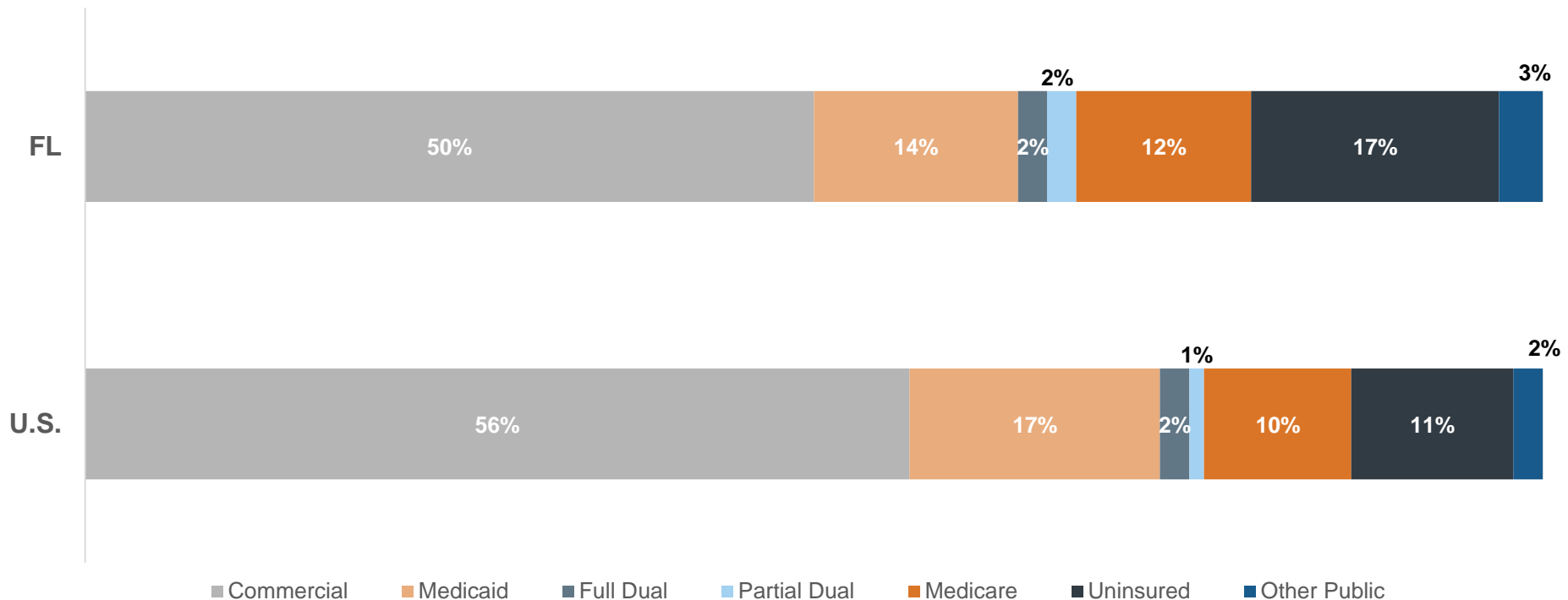


Florida & U.S. Racial Composition



SMI = Serious Mental Illness

3. Population Distribution By Payer: United States v. Florida



4. Largest Health Plans By Enrollment

Plan Name	Plan Type	Enrollment*
Blue Cross Blue Shield Of Florida	Commercial	4,300,000
Medicare FFS	Medicare	1,652,031
UnitedHealth	Commercial ASO	1,585,464
Coventry	Commercial ASO	1,008,529
Medicaid FFS	Medicaid	711,223
TRICARE	Other Public	695,784
Staywell Health Plan Of Florida	Medicaid MCO	678,799
Sunshine State Health Plan	Medicaid MCO	472,175
Cigna	Commercial ASO	458,104
Humana Medical Plan, Inc.	Commercial	389,529

*Medicaid enrollment as of September 2016; Medicare enrollment as of January 2016;
TRICARE enrollment as of December 2015; Commercial enrollment as of 4th quarter 2014

ASO = Administrative Services Only
FFS = Fee-For-Service
MCO = Managed Care Organization

5. Largest Health Plans By Estimated Serious Mental Illness (SMI) Enrollment

Plan Name	Plan Type	Enrollment*	SMI Enrollment
Medicare FFS	Medicare	1,652,031	236,240
Blue Cross Blue Shield Of Florida	Commercial	4,300,000	101,910
Humana Medical Plan, Inc.	Medicare	354,229	50,655
Magellan Complete Care	Medicaid SMI/SED MCO	58,645	46,772**
Medicaid FFS	Medicaid	711,223	44,807
Staywell Health Plan Of Florida	Medicaid MCO	678,799	42,764
TRICARE	Other Public	695,784	38,964
UnitedHealth	Commercial ASO	1,585,464	37,575
Sunshine	Medicaid MCO	472,175	29,747
UnitedHealthcare Insurance Company	Medicare	198,982	28,454

*Medicaid enrollment as of September 2016; Medicare enrollment as of January 2016; TRICARE enrollment as of December 2015; Commercial enrollment as of 4th quarter 2014

**Magellan Complete Care SMI enrollment estimate is based on the number of enrollees age 18 and over. All plan enrollees must have a diagnosis of SMI or SED to participate in the plan.

ASO = Administrative Services Only
FFS = Fee-For-Service
MCO = Managed Care Organization
SMI/SED = Serious Mental Illness & Serious Emotional Disability

6. Health Insurance Marketplace Overview

Health Insurance Marketplace	
Type Of Marketplace	<ul style="list-style-type: none">Federal
Individual Enrollment Contact	<ul style="list-style-type: none">www.healthcare.gov1-800-318-2596
Small Business Enrollment Contact	<ul style="list-style-type: none">www.healthcare.gov/small-businesses1-800-706-7893

7. Health Insurance Marketplace Plans

Individual Market Health Plans

- Aetna Health, Inc.
- Blue Cross & Blue Shield Of Florida
- Celtic Insurance Company
- Coventry Health Care Of Florida, Inc.
- Florida Health Care Plan, Inc.
- Health First Health Plans, Inc.
- Health Options, Inc.
- Humana Medical Plan, Inc.
- Molina Healthcare Of Florida, Inc.
- UnitedHealthcare Of Florida, Inc.

Small Group Market Plans

- Blue Cross & Blue Shield Of Florida
- Florida Health Care Plan, Inc.
- Health First Health Plans, Inc.
- Health First Insurance, Inc.
- Health Options, Inc.
- Humana Medical Plan, Inc.
- UnitedHealthcare Of Florida, Inc.

B. FLORIDA MEDICAID SYSTEM OVERVIEW

8. Delivery System, Risk, & Federal Participation

Medicaid Financial Delivery System	
Is Managed Care Mandatory For Populations With SMI?	Yes
Is Managed Care Mandatory For Dual-Eligibles?	Yes
Total Medicaid Population Distribution	<ul style="list-style-type: none"> • 18% in fee-for-service (FFS) • 82% in managed care
Medicaid Beneficiaries With SMI: <i>Primary Service System</i>	Because the SMI population must enroll in managed care unless they meet one of the FFS qualifications, the majority of the SMI population is served by managed care.
Medicaid Financing & Risk Arrangements: Behavioral Health	
Traditional Behavioral Health Services	<ul style="list-style-type: none"> • FFS population: Covered FFS by the state • Managed care population: Included in the MCOs' capitation rate.
Specialty Behavioral Health Services	
Pharmaceuticals	<ul style="list-style-type: none"> • Fee-for-service population: Covered FFS by the state • Managed care population: Included in the MCOs' capitation rate
Federal Financial Participation	
FY 2017 Federal Medical Assistance Percentage (FMAP)	61.10%
CY 2016 Newly Eligible FMAP (Expansion Population)	Not Applicable

MCO = Managed Care Organization
SMI = Serious Mental Illness

9. Expansion Decision

State Medicaid Expansion Decision	
Participating In Expansion?	No
Date Of Expansion	Not Applicable
Medicaid Eligibility Income Limit For Able-Bodied Adults	34% of FPL for parents; 0% of FPL for childless adults
Legislation Used To Expand Medicaid	<ul style="list-style-type: none"> • Not Applicable • In 2015, Florida Governor Rick Scott filed a lawsuit against the federal government claiming that reductions in Florida's low-income pool Medicaid funding are being used to coerce Florida into enacting ACA Medicaid expansion.

ACA = Affordable Care Act
FPL = Federal Poverty Level

10. Care Coordination Entities

Medicaid Care Coordination Entities For Chronic Care Populations (Including SMI)

Managed Care Plan	✓	Managed Medical Assistance Specialty Plans are required to provide care coordination appropriate to the population served
Accountable Care Organization (ACO) Program		None
Health Home		None
Medical Home		None
Primary Care Case Management Model (PCCM)		None

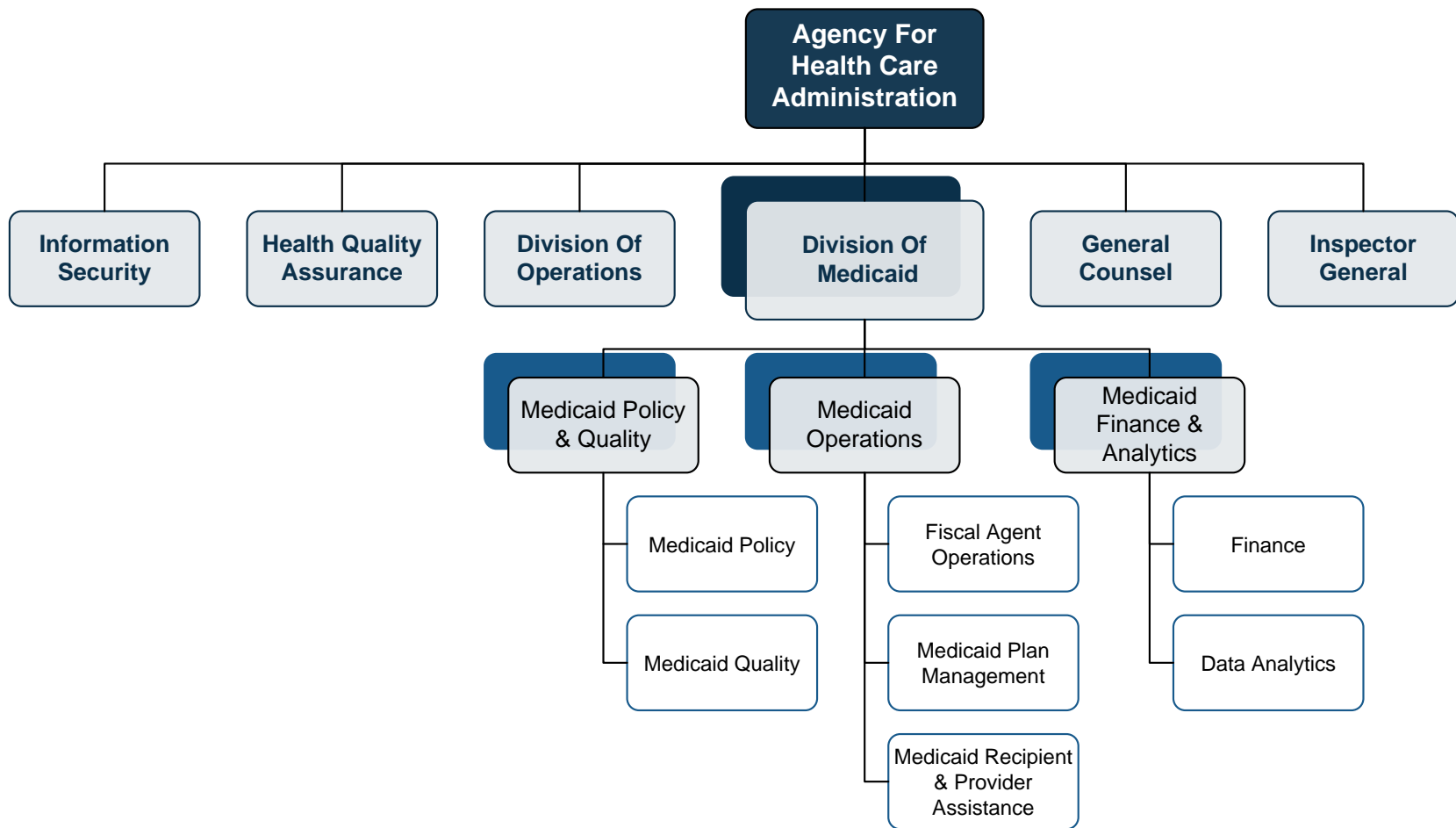
SMI = Serious Mental Illness

11. The Uninsured

State Agency Responsible For Uninsured Citizens & Delivery System Model

Physical Health Services	The Florida Agency For Health Care Administration, Bureau Of Medicaid Program Finance is responsible for managing the distribution of funds from the low income care pool, disproportionate share hospital payments, and the hospital rate enhancements program.
Mental Health Services	The Florida Department Of Children & Families, Office Of Substance Abuse & Mental Health (OSAMH) administers the mental health and substance abuse treatment services program for the safety-net population. OSAMH contracts with seven agencies that manage delivery of care through local provider networks.
Addiction Treatment Services	

12. Organizational Chart



13. Key Leadership

Name	Position	Department
<i>Vacant</i>	Secretary	Agency For Health Care Administration
Justin Senior	Acting Secretary State Medicaid Director	Agency For Health Care Administration, Division Of Medicaid
Beth Kidder	Assistant Deputy Secretary, Medicaid Policy & Quality	Agency For Health Care Administration, Division Of Medicaid
David Rogers	Assistant Deputy Secretary, Medicaid Operations	Agency For Health Care Administration, Division Of Medicaid
Dan McClary	Assistant Deputy Secretary, Medicaid Finance & Analytics	Agency For Health Care Administration, Division Of Medicaid

14. Program Benefits

Federally Mandated Services

- Inpatient hospital services other than services in an institution for mental disease (IMD)
- Outpatient hospital services
- Rural Health Clinic services
- Federally Qualified Health Center (FQHC) services
- Laboratory and X-ray services
- Nursing facilities for individuals 21 and over
- Early & Periodic Screening & Diagnosis & Treatment (EPSDT)
- Family planning services and supplies for individuals of child-bearing age
- Physician services
- Medical and surgical services of a dentist
- Home health services
- Nurse midwife services
- Nurse practitioner services
- Pregnancy services, including tobacco cessation programs
- Free standing birth centers
- Non-emergency transportation to medical care

Florida's Optional Services

- Podiatrists', optometrists', and chiropractors' services
- Other practitioners' services
- Private duty nursing
- Clinic services
- Dental services
- Physical and occupational therapy
- Services for individuals with speech, hearing, and language disorders
- Prescribed drugs
- Dentures, prosthetic devices, and eyeglasses
- Diagnostic, screening, and preventive services
- Rehabilitative services
- Inpatient institutions for mental diseases for persons age 65 and older
- Intermediate care facility services for other than mental diseases
- Public institution services for persons with developmental disabilities
- Inpatient psychiatric facility for individuals under 22
- Hospice care
- Nursing facility services for patients under 21
- Personal care services

C. FLORIDA MEDICAID FINANCING & SERVICE DELIVERY SYSTEM

15. Overview

Medicaid System Characteristics		
Characteristics	Medicaid Fee-For-Service (FFS)	Medicaid Managed Care
Enrollment (September 2016)	711,223	3,210,230
Serious Mental Illness (SMI) Enrollment	Because the SMI population must enroll in managed care unless they meet one of the FFS qualifications, the majority of the SMI population is served by managed care.	
Management	Agency For Health Care Administration	<ul style="list-style-type: none"> Managed Medical Assistance (MMA): Full-risk Managed Care Organizations (MCOs) SMI population: Specialty full-risk MCO
Payment Model	Fee-For-Service	<ul style="list-style-type: none"> MMA: Capitated rate SMI population: Capitated rate
Geographic Service Area	Statewide	<ul style="list-style-type: none"> MMA: Statewide SMI population: All but three regions

Total Medicaid Beneficiaries: 3,921,453 | Total Medicaid With SMI Beneficiaries: 247,051

16. Enrollment By Eligibility Group

Mandatory Fee-For-Service (FFS) Enrollment

1. Women eligible only for family planning services
2. Women eligible only for breast and cervical cancer services
3. Persons eligible for emergency Medicaid for aliens
4. Full benefit dual eligibles enrolled in Dual Eligible Special Needs Plans (D-SNPs)
5. Partial benefit dual eligible

Option To Enroll In FFS Or Managed Care

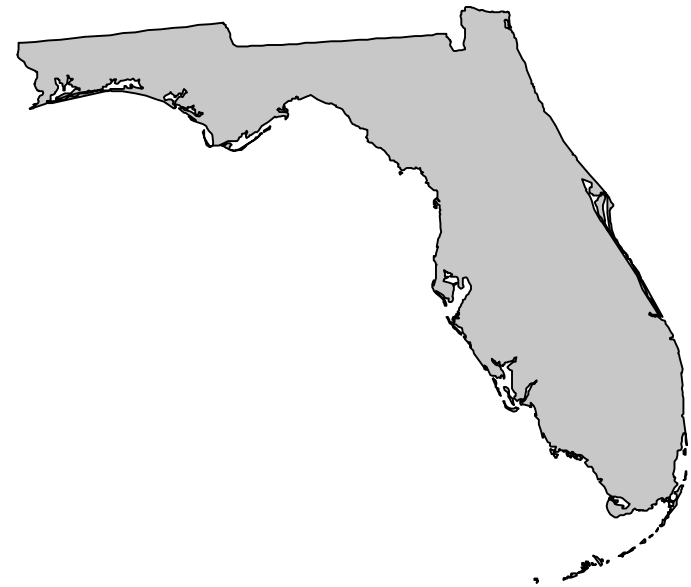
1. Persons who have other creditable health care coverage,
2. Individuals residing in residential commitment or group home facilities
3. Persons eligible for refugee assistance
4. Medicaid recipients who are residents of a developmental disability center
5. Individuals enrolled in or waiting for enrollment in the home-and community-based services waiver
6. Children receiving services in a prescribed pediatric extended care center

Mandatory Managed Care Enrollment

1. Children
2. Families
3. Elderly persons
4. Blind and disabled persons
5. Full benefit dual eligibles not enrolled in D-SNPs

17. Fee-For-Service (FFS) Program: Program Overview

- Fee-for-service (FFS) enrollment as of September 2016 was 711,223.
- Persons who receive physical and behavioral health services through the FFS system must receive their long-term services and supports (LTSS) through a Long-Term Care (LTC) managed care plan.
- As of September 2016, 12,875 FFS enrollees received LTSS through a LTC plan.



18. Fee-For-Service (FFS) Program: Behavioral Health Benefits

FFS Mental Health Benefits

- Inpatient and residential psychiatric treatment for persons under age 21 and over age 65
- Assessments
- Treatment planning
- Individual, group, and family therapy
- Community support
- Rehabilitative services
- Targeted case management

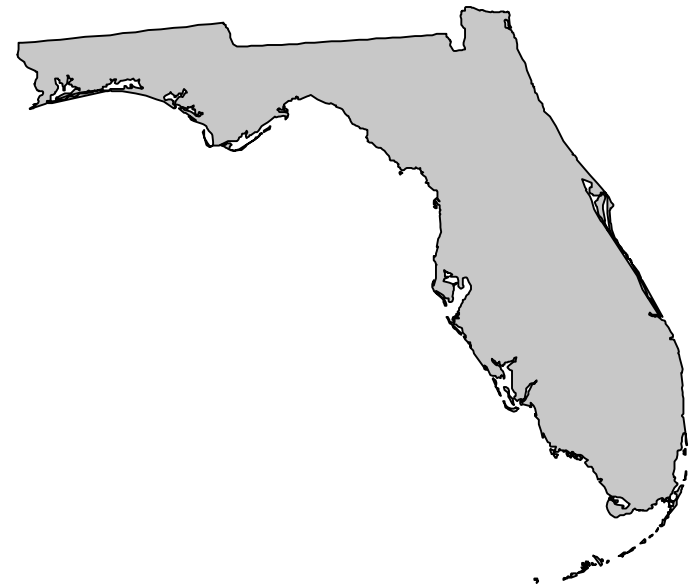
FFS Substance Abuse Treatment Benefits

- Assessments
- Treatment planning
- Individual, group, and family therapy
- Community support
- Rehabilitative services
- Medication assisted treatment

Through certified Medicaid match agreements, the state also distributes Medicaid funds on a fee-for-service basis to reimburse the counties for the federal share of financing for delivery of the following substance abuse treatment services: comprehensive aftercare, individual and group peer recovery support services, and intervention services.

19. Fee-For-Service (FFS) Program: Serious Mental Illness (SMI) Population

Individuals with SMI are not exempt from enrolling in managed care, unless they also meet one of the FFS criteria.



20. Managed Care Program: Program Overview

- Managed care enrollment as September 2016 was 3,210,230.
- Florida calls its managed care program the Statewide Medicaid Managed Care (SMMC).
- The SMMC program consists of two components.
 - Managed Medical Assistance (MMA):** The MMA program provides medical and behavioral health services to children and adults.
 - Long-Term Care (LTC):** The standalone LTC program serves both the fee-for-service and MMA populations. It provides nursing facility and home and community-based services to elderly persons and adults with disabilities who meet the requirements for nursing facility level of care.

Program	LTC Enrollment	Persons Not Receiving LTC	Total Enrollment
Fee-For-Service Program	12,875	698,348	711,223
MMA Program	80,522	3,290,752	3,210,230
Total Medicaid Program	93,397	3,828,056	3,921,453

21. Managed Care Program: Managed Medical Assistance (MMA)

- The MMA component of the statewide managed care program provides medical and behavioral health services to children and adults.
- MMA delivers physical and behavioral health services to most populations through 11 standard managed care organizations (MCOs).
- The state carves-out populations with special health care needs (foster care children, individuals with HIV/AIDS, dual eligibles with chronic conditions, child welfare, and individuals with SMI) to six full-risk specialty plan MCOs.
 - For more information on the specialty health plan for individuals with SMI.
 - Each specialty plan must have a care coordination program designed specifically for the population's special health care needs.
 - Enrollment in specialty plans is optional, as individuals must have freedom of choice.
- The MMA program is statewide, but plans are available by region. Individuals may choose to enroll in any available plan.
- MMA enrollees in specialty or standard MCOs who require nursing facility level of care receive long-term services and supports via the Long-Term Care (LTC) managed care program.

HIV/AIDS = Human Immunodeficiency Virus /
Acquired Immunodeficiency Syndrome
SMI = Serious Mental Illness

22. Managed Care Program: Long-Term Care (LTC) Program

- The LTC program provides nursing facility and home and community-based services to elderly persons and adults with disabilities who meet the requirements for nursing facility level of care.
- The LTC managed care organizations (MCOs) are paid a capitated rate to provide long-term services and supports (LTSS). All other state plan services are provided through the Managed Medical Assistance (MMA) program or the fee-for-service (FFS) delivery system.
- As of September 2016, 93,397 persons received services through the LTC program.
- The LTC program is available statewide, but the six plans are available by region. Individuals can choose among plans available in their region.
- Enrollment is mandatory for persons needing a nursing facility level of care who are:
 - 65 years or older
 - 18 years or older and eligible for Medicaid due to disability
 - In hospice or institutional care
 - Aged out of the children's medical services program
- Enrollment is optional for persons who have other creditable health insurance coverage or are enrolled in the following programs:
 - Developmental Disabilities Waiver
 - Traumatic Brain & Spinal Cord Injury Waiver
 - Project AIDS Care Waiver
 - Familial Dysautonomia Waiver
 - Model Waiver
 - Program Of All-Inclusive Care For The Elderly (PACE)

23. Managed Care Program: Behavioral Health Benefits

- Behavioral health and pharmacy benefits are included in the MCOs' capitation rate.
- The Magellan Complete Care specialty plan for persons with SMI offers an expanded intensive outpatient therapy benefit for substance abuse.
- Matching funds for substance abuse comprehensive aftercare, individual and group peer recovery support, and intervention are provided fee-for-service by the state to counties and are not the responsibility of the managed care plans.

Managed Care Mental Health Benefits

1. Inpatient and residential psychiatric treatment for persons under age 21 and over age 65
2. Assessments
3. Treatment planning
4. Individual, group, and family therapy
5. Community support
6. Rehabilitative services
7. Targeted case management

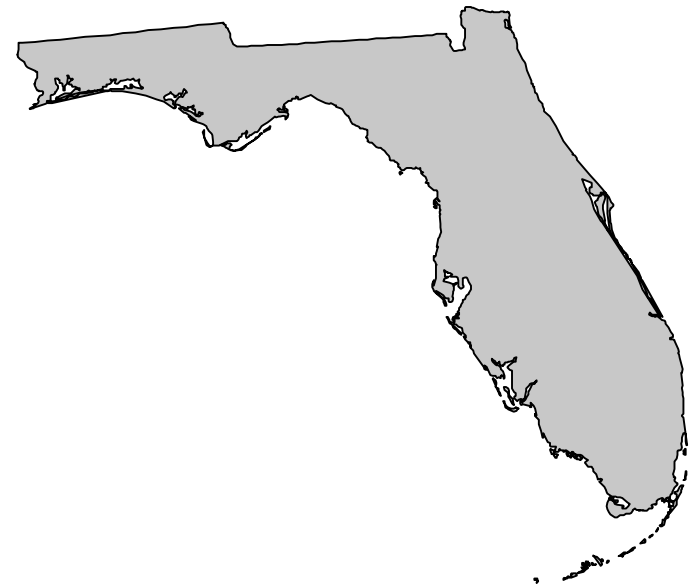
Managed Care Substance Abuse Treatment Benefits

1. Assessments
2. Treatment planning
3. Individual, group, and family therapy
4. Community support
5. Rehabilitative services
6. Medication assisted treatment

SMI = Serious Mental Illness
MCOs = Managed Care Organizations

24. Managed Care Program: Serious Mental Illness (SMI) Population

- Individuals with SMI are not exempt from enrolling in managed care, unless they also meet one of the fee-for-service criteria.
- Individuals with SMI can enroll in a managed care plan specially designed to meet their needs in all but three regions.



25. Care Coordination Initiatives

Florida has not pursued the health home state plan option under Medicaid health reform and has not invested in a statewide model of patient-centered medical homes (PCMH).

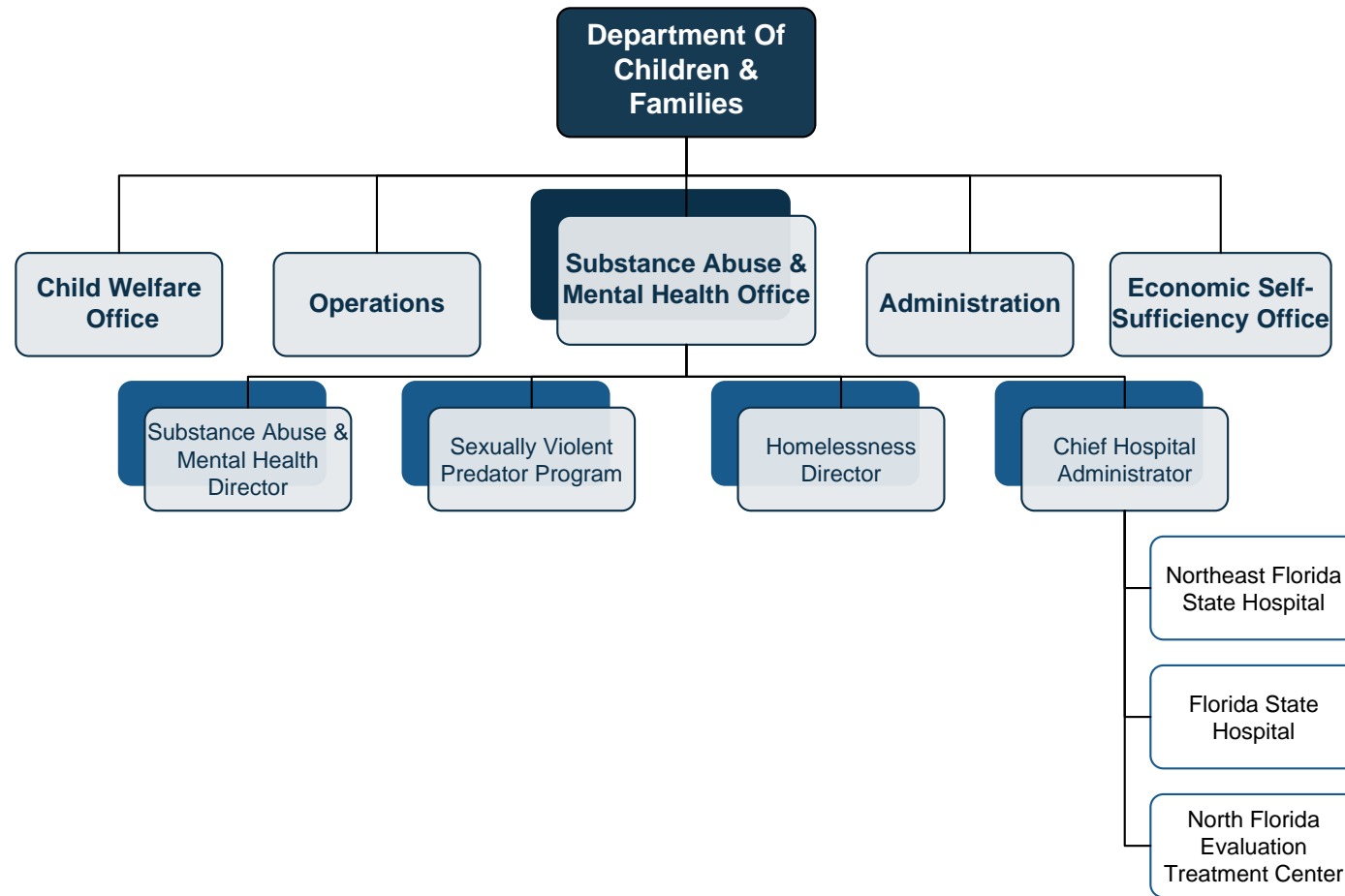


26. Program Waivers Impacting The Serious Mental Illness (SMI) Population

Waiver Title	Waiver Description	Waiver Type	2017 Enrollment Cap	Effective Date	Expiration Date
Florida Managed Medical Assistance	Expands managed care throughout the state and authorizes specialty plans for complex populations	1115	None	07/31/14	06/30/17
Florida MEDS-AD	Provides coverage for certain aged and disabled individuals with income up to 88% of the federal poverty level. Enrollees receive state plan benefits and may also receive pharmacy case management services.	1115	None	01/01/06	10/30/16 (extension pending)
Florida Long Term Managed Care (FL-17)	Authorizes provision of long-term services and supports through a managed care program. Operates concurrently with FL Long-Term Care Managed Care 1915 (c) waiver.	1915 (b)	None	07/01/13	09/30/16
FL Long-Term Care Managed Care (0962.R00.00)	Provides home and community-based services (HCBS) to individuals with physical disabilities over age 18 and individuals over age 65 and in need of a nursing facility level of care. Operates concurrently with FL Long-Term Care Managed Care FL-17 waiver.	1915 (c)	50,390	07/01/13	06/30/16
FL Traumatic Brain & Spinal Cord Injury (0342.R03.00)	Provides HCBS to individuals with traumatic brain injuries or spinal cord injuries, age 18 and above, who are in need of a nursing facility level of care.	1915 (c)	449	07/01/12	06/30/17

D. FLORIDA BEHAVIORAL HEALTH ADMINISTRATION & FINANCE SYSTEM

27. OSAMH' Organizational Chart



OSAMH = Office Of Substance Abuse & Mental Health

28. OSAMH' Key Leadership

Name	Position	Department
Mike Carroll	Secretary	Department Of Children & Families (DCF)
John Bryant	Assistant Secretary For Substance Abuse & Mental Health	DCF OMSAMH
Ute Gazioch	Substance Abuse & Mental Health Director	DCF OMSAMH
Robert Quam	Chief Hospital Administrator	DCF OMSAMH

OSAMH = Office Of Substance Abuse & Mental Health

29. State Psychiatric Institutions

Institution	Type	Operator	Location	Beds
Florida State Hospital	Civil, Forensic	State Of Florida	Chattahoochee	959
Northeast Florida State Hospital	Civil	State Of Florida	Macclenny	633
South Florida State Hospital	Civil	Correct Care, LLC	Pembroke Pines	350
South Florida Evaluation & Treatment Center	Forensic	Correct Care, LLC	Florida City	249
Treasure Coast Treatment Facility	Forensic	Correct Care, LLC	Indiantown	224
North Florida Evaluation and Treatment Center	Forensic	State Of Florida	Gainesville	193
Total Beds:				2,608

30. Medicare Shared Savings Accountable Care Organizations (ACOs)

Medicare Shared Savings Program

- | | |
|---|--|
| 1. Accountable Care Coalition Of Coastal Georgia, LLC | 19. Holy Cross Physician Partners ACO, LLC |
| 2. Accountable Care Coalition Of Northwest Florida, LLC | 20. Integral Healthcare, LLC |
| 3. Accountable Care Coalition Of Western Georgia, LLC | 21. Integrated Care Alliance, LLC |
| 4. Accountable Care Medical Group Of Florida (ACMG) | 22. Medical Consultants Management ACO |
| 5. Accountable Care Options, LLC | 23. Medical Practitioners For Affordable Care, LLC |
| 6. Allcare Options, LLC | 24. Milestone Health, Inc. |
| 7. BayCare Physician Partners ACO, LLC | 25. Millennium Accountable Care Organization |
| 8. Broward Guardian, LLC | 26. Next ACO Of Nature Coast |
| 9. Central Florida ACO, LLC | 27. Northwest Florida Health Partners, LLC |
| 10. Central Florida Physicians Trust | 28. Orange Accountable Care Of South Florida, LLC |
| 11. Collaborative Care Of Florida, LLC | 29. Orange Health Accountable Care |
| 12. First Coast Health Alliance, LLC | 30. Palm Beach Accountable Care Organization, LLC |
| 13. Florida Medical Clinic ACO, LLC | 31. Paradigm ACO, LLC |
| 14. Florida Physicians Trust, LLC | 32. Physician First ACO |
| 15. FPG Healthcare, LLC | 33. Primary Care Alliance, LLC |
| 16. Health Choice Care, LLC | 34. Space Coast ACO, LLC |
| 17. Health First Partners, LLC | 35. St. Vincent's ACO, LLC |
| 18. Health Point ACO, LLC | 36. West Florida ACO, LLC |

31. Other Medicare Accountable Care Organizations (ACOs)

Medicare Advance Payment Model	Medicare ACO Investment Model	Medicare Next Generation Model
<ol style="list-style-type: none"> 1. Accountable Care Of Northeast Florida, LLC 2. Accountable Care Partners, LLC 3. ACO Health Partners 4. Nature Coast ACO, LLC 5. Physicians ACO, LLC 6. Physicians Collaborative Trust ACO, LLC 7. Primary Partners, LLC 8. Reliance Health Network 	<ol style="list-style-type: none"> 1. Citrus County ACO, LLC 2. PremierMD ACO, LLC 	<ol style="list-style-type: none"> 1. Baroma Accountable Care, LLC

32. Commercial Accountable Care Organizations (ACOs)

Commercial	
ACO	Commercial Insurer
BayCare Physician Partners ACO, LLC	Aetna
Boca Raton Regional Hospital	Aetna/Coventry
Broward Health ACO	Cigna
Cleveland Clinic Florida	Florida Blue
Holy Cross Physician Partners ACO, LLC	Cigna, Florida Blue
Medical Specialists Of Palm Beach	Florida Blue
Memorial Health Network	Cigna
Moffitt Cancer Center	Florida Blue
NCH Healthcare System	Florida Blue
Orlando Health Physician Partners	Cigna, Florida Blue
Physician Health Partners Florida	Florida Blue
Primary Partners, LLC	Cigna
PrimeHealth Physicians	Cigna
ProMed Alliance	None
Tenet Healthcare / Advantage Health Network	Cigna. Florida Blue

APPENDIX A: SOURCES

Sources

(Page 1 Of 9)

A. Health Care Marketplace Overview

1. Physical Health Care Coverage Map

- United States Department of Health and Human Services. (2015, December 22). 2016 QHP Landscape Individual Market Medical. Retrieved February 8, 2016 from <https://data.healthcare.gov/dataset/2016-QHP-Landscape-Individual-Market-Medical-Excel/k2hw-8vcp>
- United State Department of Health and Human Services. (2015, December 22). 2016 QHP Landscape SHOP Market Medical. Retrieved February 8, 2016 from <https://data.healthcare.gov/dataset/2016-QHP-Landscape-SHOP-Market-Medical-Excel/vcra-66c2>
- United States Department of Health and Human Services. (March 11, 2016). Addendum to the Health Insurance Marketplaces 2016 Open Enrollment Period: Final Enrollment Report. Retrieved March 24, 2016 from <https://aspe.hhs.gov/sites/default/files/pdf/188026/MarketPlaceAddendumFinal2016.pdf>
- Florida Agency for Health Care Administration. (2016, September). Florida Statewide Medicaid Monthly Enrollment Report. Retrieved September 21, 2016 from http://www.fdhc.state.fl.us/medicaid/Finance/data_analytics/enrollment_report/index.shtml
- Florida Agency for Health Care Administration. (2015, December). A Snapshot of the Florida Medicaid Managed Medical Assistance Program. Retrieved September 27, 2016 from https://ahca.myflorida.com/Medicaid/statewide_mc/pdf/mma/SMMC_MMA_Snapshot.pdf

2. Population Demographics

- United States Census Bureau. 2014 Population Estimates. Retrieved May 3, 2016 from <http://www.census.gov/popest/data/state/totals/2014/index.html>
- United States Census Bureau. 2014 Demographic and Housing Estimates. Retrieved May 3, 2016 from <http://factfinder.census.gov/faces/nav/jsf/pages/index.xhtml>
- United States Census Bureau. State Median Income. Retrieved May 3, 2016 from <https://www.census.gov/hhes/www/income/data/statemedian/index.html>
- United States Census Bureau. Poverty. Retrieved May 3, 2016 from https://www.census.gov/hhes/www/cpstables/032015/pov/pov46_002.htm

Sources

(Page 2 Of 9)

A. Health Care Marketplace Overview (Continued)

3. Population Distribution By Payer: United States v. Pennsylvania

- OPEN MINDS. (2016) Serious Mental Illness Prevalence Estimates

4. Largest Health Plans By Enrollment

- Health Plans USA. (2014). Subscription Database. Available from <http://www.markfarrah.com/products/health-plans-usa.aspx>
- OPEN MINDS. (2016, March). Database
- Florida Agency for Health Care Administration. (2016, September). Florida Statewide Medicaid Monthly Enrollment Report. Retrieved September 21, 2016 from http://www.fdhc.state.fl.us/medicaid/Finance/data_analytics/enrollment_report/index.shtml

5. Largest Health Plans By Estimated Serious Mental Illness (SMI) Enrollment

- Health Plans USA. (2014). Subscription Database. Available from <http://www.markfarrah.com/products/health-plans-usa.aspx>
- OPEN MINDS. (2016, March). Database.
- Florida Agency for Health Care Administration. (2016, September). Florida Statewide Medicaid Monthly Enrollment Report. Retrieved September 21, 2016 from http://www.fdhc.state.fl.us/medicaid/Finance/data_analytics/enrollment_report/index.shtml

6. Health Insurance Marketplace Overview

- United States Department of Health and Human Services. (2015, December 22). 2016 QHP Landscape Individual Market Medical. Retrieved February 8, 2016 from <https://data.healthcare.gov/dataset/2016-QHP-Landscape-Individual-Market-Medical-Excel/k2hw-8vcp>
- United State Department of Health and Human Services. (2015, December 22). 2016 QHP Landscape SHOP Market Medical. Retrieved February 8, 2016 from <https://data.healthcare.gov/dataset/2016-QHP-Landscape-SHOP-Market-Medical-Excel/vcra-66c2>

Sources

(Page 3 Of 9)

A. Health Care Marketplace Overview (Continued)

7. Health Insurance Marketplace Plans

- United States Department of Health and Human Services. (2015, December 22). 2016 QHP Landscape Individual Market Medical. Retrieved February 8, 2016 from <https://data.healthcare.gov/dataset/2016-QHP-Landscape-Individual-Market-Medical-Excel/k2hw-8vcp>
- United State Department of Health and Human Services. (2015, December 22). 2016 QHP Landscape SHOP Market Medical. Retrieved February 8, 2016 from <https://data.healthcare.gov/dataset/2016-QHP-Landscape-SHOP-Market-Medical-Excel/vcra-66c2>

B. Medicaid System Overview

8. Delivery System, Risk, & Federal Participation

- Information compiled from sources provided throughout the profile.

9. Expansion Decision

- Information compiled from sources provided throughout the profile.

10. Care Coordination Entities

- Information compiled from sources provided throughout the profile.

11. The Uninsured

- Information compiled from sources provided throughout the profile.

Sources

(Page 4 Of 9)

B. Medicaid System Overview (Continued)

12. Organizational Chart

- Florida Agency for Health Care Administration. (2015, December). Division of Medicaid Organizational Chart. Retrieved September 12, 2016 from http://ahca.myflorida.com/medicaid/pdf/December_2015_High_Level_Org_Chart.pdf
- Florida Agency for Health Care Administration. Agency for Health Care Administration Organizational Chart. Retrieved September 12, 2016 from http://www.fdhc.state.fl.us/inside_ahca/org_chart.shtml

13. Key Leadership

- Florida Agency for Health Care Administration. Agency for Health Care Administration Organizational Chart. Retrieved September 12, 2016 from http://www.fdhc.state.fl.us/inside_ahca/org_chart.shtml

14. Program Benefits

- Florida Agency for Health Care Administration. (2016, July 5). Medicaid State Plan. Retrieved September 19, 2016 from <http://www.fdhc.state.fl.us/medicaid/stateplan.shtml>

15. Overview

- Florida Agency for Health Care Administration. (2015, December). A Snapshot of the Florida Medicaid Managed Medical Assistance Program. Retrieved September 27, 2016 from https://ahca.myflorida.com/Medicaid/statewide_mc/pdf/mma/SMMC_MMA_Snapshot.pdf
- Florida Agency for Health Care Administration. (2016, September). Florida Statewide Medicaid Monthly Enrollment Report. Retrieved September 21, 2016 from http://www.fdhc.state.fl.us/medicaid/Finance/data_analytics/enrollment_report/index.shtml

16. Enrollment By Eligibility Group

- Florida Legislature. (2016). The 2016 Florida Statutes. Retrieved September 19, 2016 from http://www.leg.state.fl.us/statutes/index.cfm?App_mode=Display_Statute&URL=0400-0499/0409/0409.html

Sources

(Page 5 Of 9)

C. Medicaid Financing & Service Delivery System

17. Fee-For-Service (FFS) Program: Program Overview

- Florida Agency for Health Care Administration. (2016, September). Florida Statewide Medicaid Monthly Enrollment Report. Retrieved September 21, 2016 from http://www.fdhc.state.fl.us/medicaid/Finance/data_analytics/enrollment_report/index.shtml

18. Fee-For-Service (FFS) Program: Behavioral Health Benefits

- Florida Agency for Health Care Administration. (2015, March 4). Florida Medicaid and Substance Abuse Services. Retrieved September 26, 2016 from http://www.fdhc.state.fl.us/medicaid/recent_presentations/Mental_Health_and_Substance_Abuse_Services_HCFSC_2015-03-03.pdf
- Florida Agency for Health Care Administration. (2014, March). Florida Medicaid Community Behavioral Health Services Coverage And Limitations Handbook. Retrieved September 21, 2016 from http://www.fdhc.state.fl.us/medicaid/Finance/data_analytics/enrollment_report/index.shtml

19. Fee-For-Service (FFS) Program: Serious Mental Illness (SMI) Population

- Florida Agency for Health Care Administration. (2015, December). A Snapshot of the Florida Medicaid Managed Medical Assistance Program. Retrieved September 27, 2016 from https://ahca.myflorida.com/Medicaid/statewide_mc/pdf/mma/SMMC_MMA_Snapshot.pdf

20. Managed Care Program: Program Overview

- Florida Agency for Health Care Administration. (2016, September). Florida Statewide Medicaid Monthly Enrollment Report. Retrieved September 27, 2016 from http://www.fdhc.state.fl.us/medicaid/Finance/data_analytics/enrollment_report/index.shtml
- Florida Agency for Health Care Administration. (2016, August 18). A Snapshot of the Florida Medicaid Long-Term Care Program. Retrieved September 27, 2016 from http://www.fdhc.state.fl.us/Medicaid/statewide_mc/pdf/LTC/SMMC_LTC_Snapshot.pdf
- Florida Agency for Health Care Administration. (2015, December). A Snapshot of the Florida Medicaid Managed Medical Assistance Program. Retrieved September 27, 2016 from https://ahca.myflorida.com/Medicaid/statewide_mc/pdf/mma/SMMC_MMA_Snapshot.pdf

Sources

(Page 6 Of 9)

C. Medicaid Financing & Service Delivery System (Continued)

21. Managed Care Program: Managed Medical Assistance

- Florida Agency for Health Care Administration. (2015, December). A Snapshot of the Florida Medicaid Managed Medical Assistance Program. Retrieved September 27, 2016 from https://ahca.myflorida.com/Medicaid/statewide_mc/pdf/mma/SMMC_MMA_Snapshot.pdf
- Florida Agency for Health Care Administration. (2015, January 21). Medicaid Managed Medical Assistance Specialty Plans. Retrieved September 27, 2016 from http://www.fdhc.state.fl.us/medicaid/statewide_mc/pdf/mma/Specialty_Plans_012115.pdf

22. Managed Care Program: Long-Term Care Program

- Florida Agency for Health Care Administration. (2016, September). Florida Statewide Medicaid Monthly Enrollment Report. Retrieved September 27, 2016 from http://www.fdhc.state.fl.us/medicaid/Finance/data_analytics/enrollment_report/index.shtml
- Florida Agency for Health Care Administration. (2016, August 18). A Snapshot of the Florida Medicaid Long-Term Care Program. Retrieved September 27, 2016 from http://www.fdhc.state.fl.us/Medicaid/statewide_mc/pdf/LTC/SMMC_LTC_Snapshot.pdf

23. Managed Care Program: Behavioral Health Benefits

- Florida Agency for Health Care Administration. (2015, March 4). Florida Medicaid and Substance Abuse Services. Retrieved September 26, 2016 from http://www.fdhc.state.fl.us/medicaid/recent_presentations/Mental_Health_and_Substance_Abuse_Services_HCFSC_2015-03-03.pdf
- Florida Agency for Health Care Administration. (2014, March). Florida Medicaid Community Behavioral Health Services Coverage And Limitations Handbook. Retrieved September 21, 2016 from http://www.fdhc.state.fl.us/medicaid/Finance/data_analytics/enrollment_report/index.shtml
- Florida Agency for Health Care Administration. (2016, August 15). Managed Care Model Contract Attachment II Exhibit II-C Serious Mental Illness Specialty Plan. Retrieved September 27, 2106 from http://www.fdhc.state.fl.us/medicaid/statewide_mc/pdf/Contracts/2016-08-15/08-15-16_EXHIBIT_II-C_SMI_GEN_AMEND.pdf
- Florida Agency for Health Care Administration. (2016, June 6). Medicaid Covered Services Not Provided by Managed Medical Assistance Plans. Retrieved September 28, 2016 from https://ahca.myflorida.com/medicaid/statewide_mc/pdf/Medicaid_Covered_Services_Not_Covered_by_MMA_Plans_2016-06-06.pdf

Sources

(Page 7 Of 9)

C. Medicaid Financing & Service Delivery System (Continued)

24. Managed Care Program: Serious Mental Illness (SMI) Population

- Florida Agency for Health Care Administration. (2015, December). A Snapshot of the Florida Medicaid Managed Medical Assistance Program. Retrieved September 27, 2016 from https://ahca.myflorida.com/Medicaid/statewide_mc/pdf/mma/SMMC_MMA_Snapshot.pdf

25. Care Coordination Initiatives

- Centers for Medicare and Medicaid Services. (2015, December). Approved Medicaid Health Home State Plan Amendments. Retrieved May 9, 2016 from https://www.medicaid.gov/state-resource-center/medicaid-state-technical-assistance/health-homes-technical-assistance/downloads/hh-map_v51.pdf
- Henry J. Kaiser Family Foundation. (2015, October). Medicaid Reforms to Expand Coverage, Control Costs, and Improve Care. Retrieved May 9, 2016 from <http://files.kff.org/attachment/report-medicaid-reforms-to-expand-coverage-control-costs-and-improve-care-results-from-a-50-state-medicaid-budget-survey-for-state-fiscal-years-2015-and-2016>

26. Program Waivers Impacting The Serious Mental Illness (SMI) Population

- Centers for Medicare and Medicaid Services. Demonstrations and Waivers. Retrieved September 23, 2016 from https://www.medicaid.gov/medicaid-chip-program-information/by-topics/waivers/waivers_faceted.html

D. Behavioral Health Administration & Finance System

27. OSAMH' Organizational Chart

- Florida Department of Children and Families. (2016, September 1). Organizational Chart. Retrieved September 13, 2016 from <https://www.dcf.state.fl.us/admin/docs/orgchart.pdf>

Sources

(Page 8 Of 9)

D. Behavioral Health Administration & Finance System (Continued)

28. OSAMH' Key Leadership

- Florida Department of Children and Families. (2016, September 1). Organizational Chart. Retrieved September 13, 2016 from <https://www.dcf.state.fl.us/admin/docs/orgchart.pdf>

29. State Psychiatric Institutions

- Florida Department of Children and Families. State Mental Health Treatment Facilities. Retrieved September 13, 2016 from <http://www.myflfamilies.com/service-programs/mental-health/state-mental-health-treatment-facilities>

30. Medicare Shared Savings Accountable Care Organizations (ACOs)

- OPEN MINDS Database

31. Other Medicare Accountable Care Organizations (ACOs)

- OPEN MINDS Database

32. Commercial Accountable Care Organizations (ACOs)

- OPEN MINDS Database