



# The PsychU Guide To The Texas Mental Health System

This resource is provided for informational purposes only and is not intended as reimbursement or legal advice.

You should seek independent, qualified professional advice to ensure that your organization is in compliance with the complex legal and regulatory requirements governing health care services, and that treatment decisions are made consistent with the applicable standards of care.

Except as otherwise indicated, the information provided is accurate to the best of Otsuka's knowledge as of December 2016.

# Contents

## PsychU Guide To The Texas Mental Health System

### A. Health Care Marketplace Overview

1. Physical Health Care Coverage Map
2. Population Demographics
3. Population Distribution By Payer: United States V. Texas
4. Largest Health Plans By Enrollment
5. Largest Health Plans By Estimated SMI Enrollment
6. Health Insurance Marketplace Overview
7. Health Insurance Marketplace Plans

### B. Medicaid System Overview

8. Delivery System, Risk, & Federal Participation
9. Expansion Decision
10. Care Coordination Entities
11. The Uninsured
12. Organizational Chart
13. Key Leadership
14. Program Benefits

### C. Medicaid Financing & Service Delivery System

15. Overview
16. Enrollment By Eligibility Group
17. FFS Program: Program Overview
18. FFS Program: BH Benefits
19. FFS Program: SMI Population
20. Managed Care Program: Program Overview
21. Managed Care Program: Service Areas
22. Managed Care Program: STAR Program
23. Managed Care Program: STAR+PLUS Program
24. Managed Care Program: STAR Kids Program
25. Managed Care Program: BH Overview
26. Managed Care Program: BH Benefits
27. Managed Care Program: SMI Population
28. Care Coordination Initiatives
29. Program Waivers Impacting The SMI Population

### D. Behavioral Health Administration & Finance System

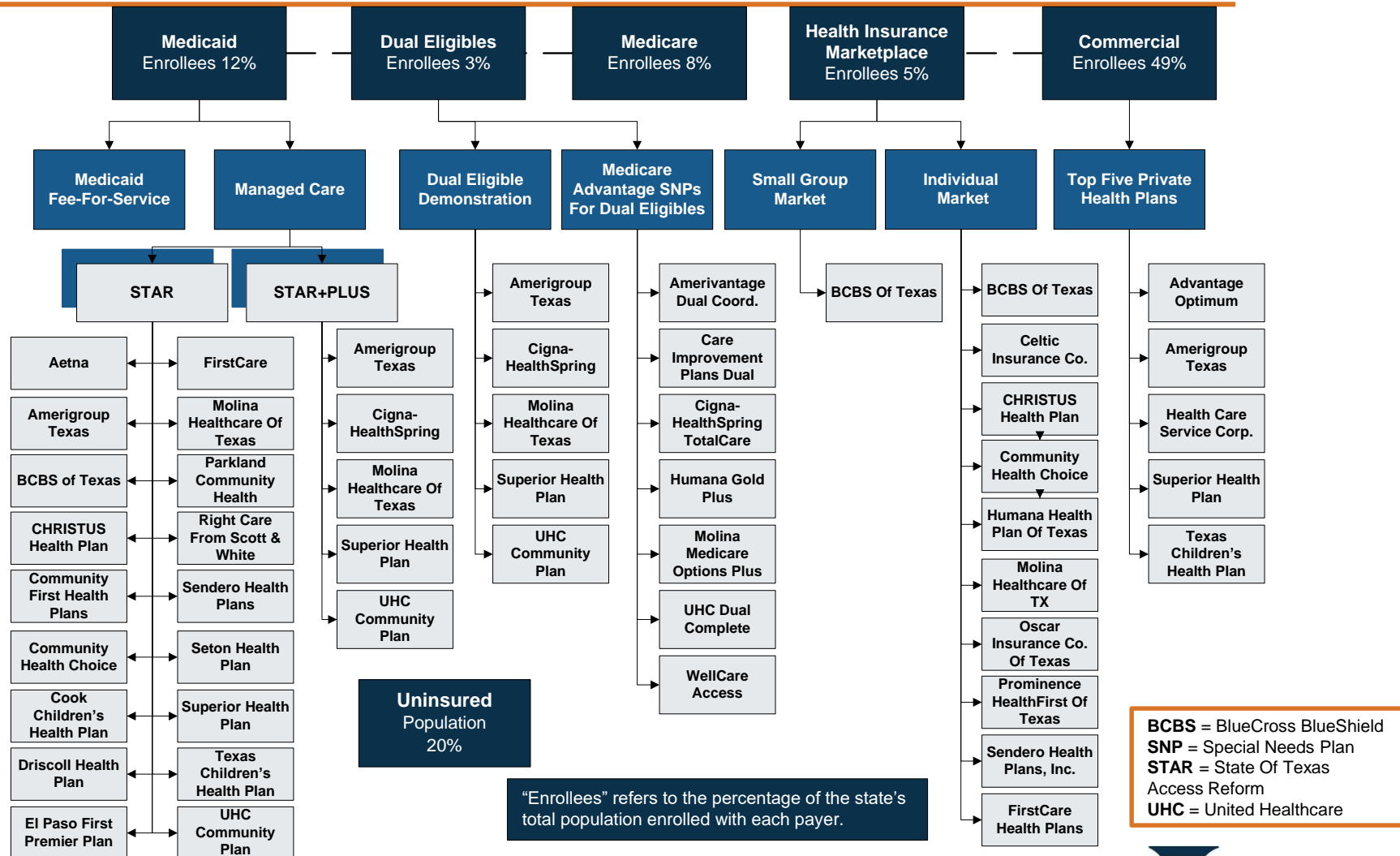
30. HHS Organizational Chart
31. HHS Key Leadership
32. State Psychiatric Institutions
33. ACOs
34. Commercial ACOs

### Appendix A: Sources

**ACO** = Accountable Care Organization  
**BH** = Behavioral Health  
**FFS** = Fee-For-Service  
**HHS** = Texas Health & Human Services Commission  
**MCO** = Managed Care Organization  
**SMI** = Serious Mental Illness  
**STAR** = State Of Texas Access Reform

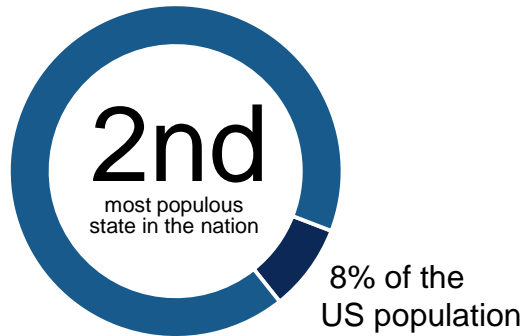
# A. TEXAS HEALTH CARE MARKETPLACE OVERVIEW

# 1. Physical Health Care Coverage Map

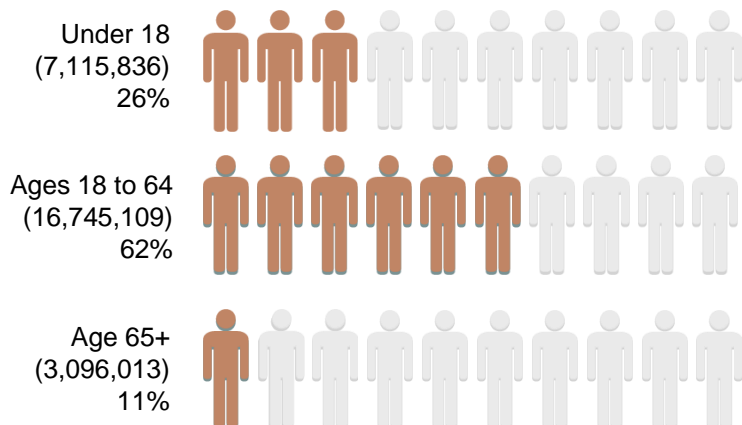


## 2. Population Demographics

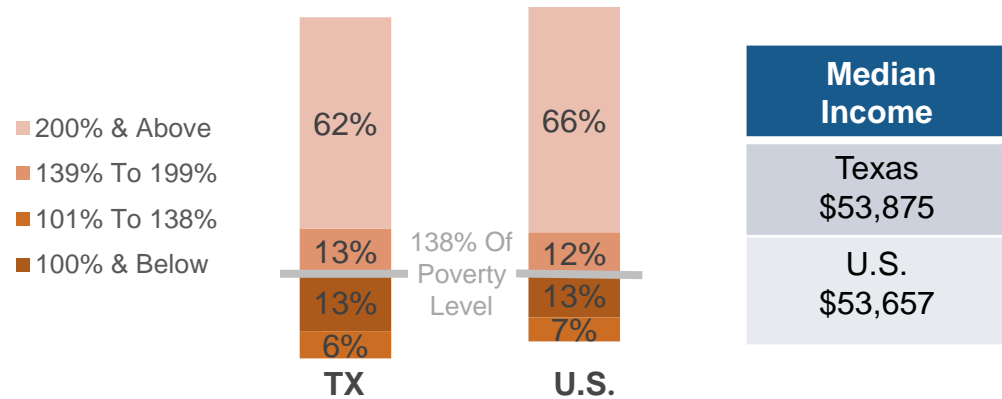
Total Texas Population - 26,956,958  
SMI Population - 1,135,094



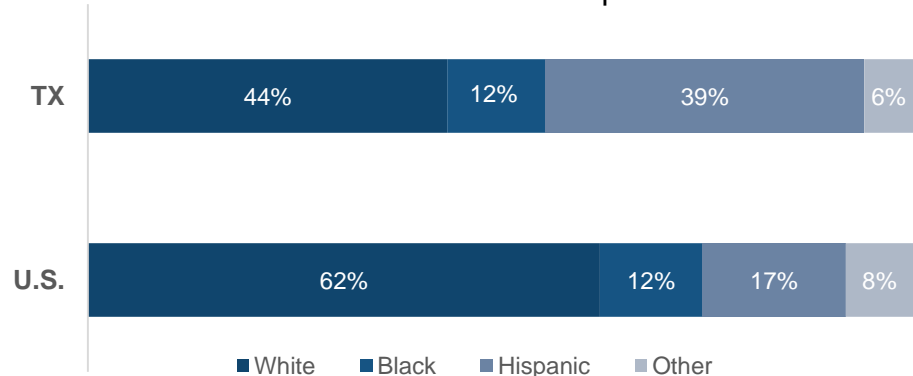
### Population Distribution By Age



### Population Distribution By Income To Poverty Threshold Ratio

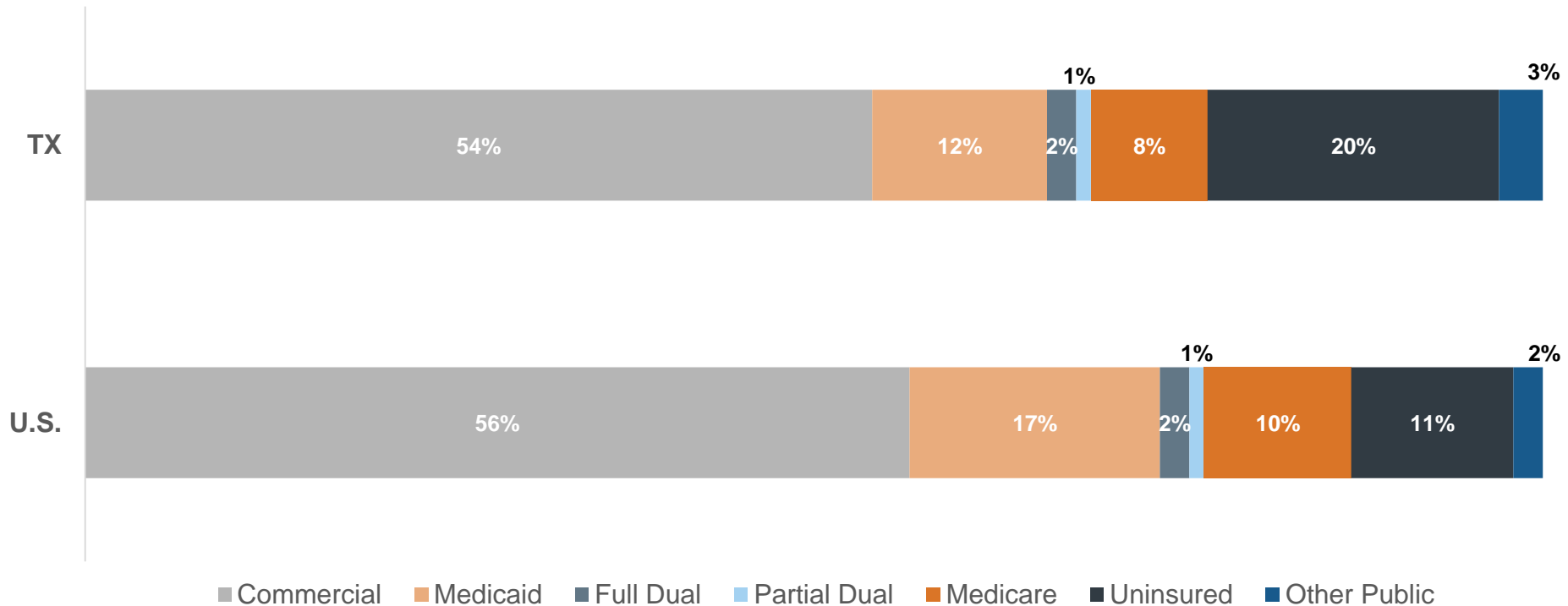


### Texas & U.S. Racial Composition



SMI = Serious Mental Illness

### 3. Population Distribution By Payer: United States v. Texas



## 4. Largest Health Plans By Enrollment

Plan Name	Plan Type	Enrollment*
Medicare Fee-For-Service (FFS)	Medicare	2,331,807
Health Care Service Corporation	Commercial	1,631,506
TRICARE	Other Public	881,560
Superior	Medicaid Managed Care, STAR Program	705,927
Amerigroup Texas, Inc.	Commercial	687,393
Amerigroup	Medicaid Managed Care, STAR Program	570,555
Medicaid FFS	Medicaid	499,467
Superior Health Plan, Inc.	Commercial	454,968
Advantage Optimum	Commercial	454,322
Texas Children's Health Plan, Inc.	Commercial	387,897

\*Medicare as of August 2016; Medicaid enrollment as of March 2016; TRICARE as of December 2015; Commercial as of March 2016.

**STAR** = State Of Texas Access Reform



## 5. Largest Health Plans By Estimated Serious Mental Illness (SMI) Enrollment

Plan Name	Plan Type	Enrollment*	SMI Enrollment
Medicare Fee-For-Service (FFS)	Medicare	2,331,807	333,448
Superior	Medicaid STAR+PLUS (Adults With Disabilities)	144,005	50,402
TRICARE	Other Public	881,560	49,367
Amerigroup	Medicaid STAR+PLUS	137,116	47,991
UnitedHealthcare	Medicaid STAR+PLUS	114,714	40,150
Health Care Service Corporation	Commercial	1,631,506	38,667
Medicaid FFS	Medicaid Managed Care	499,467	31,466
Molina Healthcare Of Texas	Medicaid STAR+PLUS	89,316	31,261
UnitedHealthcare Benefits Of TX, Inc.	Medicare	211,331	30,220
Aetna Life Insurance Company	Medicare	139,311	19,921

\*Medicare as of August 2016; Medicaid enrollment as of March 2016; TRICARE as of December 2015; Commercial as of March 2016.

**STAR** = State Of Texas Access Reform

## 6. Health Insurance Marketplace Overview

Health Insurance Marketplace	
Type Of Marketplace	<ul style="list-style-type: none"><li>Federal</li></ul>
Individual Enrollment Contact	<ul style="list-style-type: none"><li><a href="http://www.healthcare.gov">www.healthcare.gov</a></li><li>1-800-318-2596</li></ul>
Small Business Enrollment Contact	<ul style="list-style-type: none"><li><a href="http://www.healthcare.gov/small-businesses">www.healthcare.gov/small-businesses</a></li><li>1-800-706-7893</li></ul>

## 7. Health Insurance Marketplace Plans

### Individual Market Health Plans

- Blue Cross Blue Shield Of Texas
- Celtic Insurance Company
- CHRISTUS Health Plan
- Community Health Choice, Inc.
- Humana Health Plan Of Texas, Inc.
- Molina Healthcare Of Texas, Inc.
- Oscar Insurance Company Of Texas
- Prominence HealthFirst Of Texas, Inc.
- Sendero Health Plans, Inc.
- SHA, LLC, dba, FirstCare Health Plans

### Small Group Market Plans

- Blue Cross Blue Shield Of Texas

**DBA** = Doing Business As  
**SHA** = Southwest Health Alliances

## **B. TEXAS MEDICAID SYSTEM OVERVIEW**

## 8. Delivery System, Risk, & Federal Participation

Medicaid Financial Delivery System	
Is Managed Care Mandatory For Populations With SMI?	Yes
Is Managed Care Mandatory For Dual-Eligibles?	Yes
Total Medicaid Population Distribution (November 2016 Estimate*)	<ul style="list-style-type: none"> <li>8% in fee-for-service (FFS)</li> <li>92% in managed care</li> </ul>
Medicaid Beneficiaries With SMI: <i>Primary Service System</i>	Because the SMI population must enroll in managed care unless they meet one of the FFS qualifications, the majority of the SMI population is served by managed care
Medicaid Financing & Risk Arrangements: Behavioral Health	
Traditional Behavioral Health Services	<ul style="list-style-type: none"> <li><u>FFS Population</u>: Covered FFS by the state</li> <li><u>Managed Care Population</u>: Included in the MCO's capitation rate</li> </ul>
Specialty Behavioral Health Services	
Pharmaceuticals	<ul style="list-style-type: none"> <li><u>FFS Population</u>: Covered FFS by the state</li> <li><u>Managed Care Population</u>: Included in the MCO's capitation rate</li> </ul>
Federal Financial Participation	
FY 2017 Federal Medical Assistance Percentage (FMAP)	56.18%
CY 2016 Newly Eligible FMAP (Expansion Population)	Not applicable

\*The Medicaid population distribution was estimated using March 2016 actual enrollment and the state's estimated enrollment for the State Of Texas Access Reform (STAR) Kids managed care program that launched in November 2016.

**MCO** = Managed Care Organization  
**SMI** = Serious Mental Illness

## 9. Expansion Decision

State Medicaid Expansion Decision	
Participating In Expansion?	No
Date Of Expansion	Not Applicable
Medicaid Eligibility Income Limit For Able-Bodied Adults	18% federal poverty level (FPL) for parents; 0% FPL for childless adults
Legislation Used To Expand Medicaid	Not Applicable

# 10. Care Coordination Entities

## Medicaid Care Coordination Entities For Chronic Care Populations (Including SMI)

<b>Managed Care Plan</b>	✓	MCOs must submit to the state a value-based purchasing plan.
<b>Accountable Care Organization (ACO) Program</b>		None
<b>Health Home</b>		Plans for a behavioral health integrated health home pilot are in development.
<b>Medical Home</b>	✓	Managed care primary care providers serve as medical homes.
<b>Primary Care Case Management (PCCM) Model</b>	✓	The Texas Wellness Program is a PCCM program for FFS enrollees with chronic conditions.

**FFS** = Fee-For-Service

**MCO** = Managed Care Organization

**SMI** = Serious Mental Illness

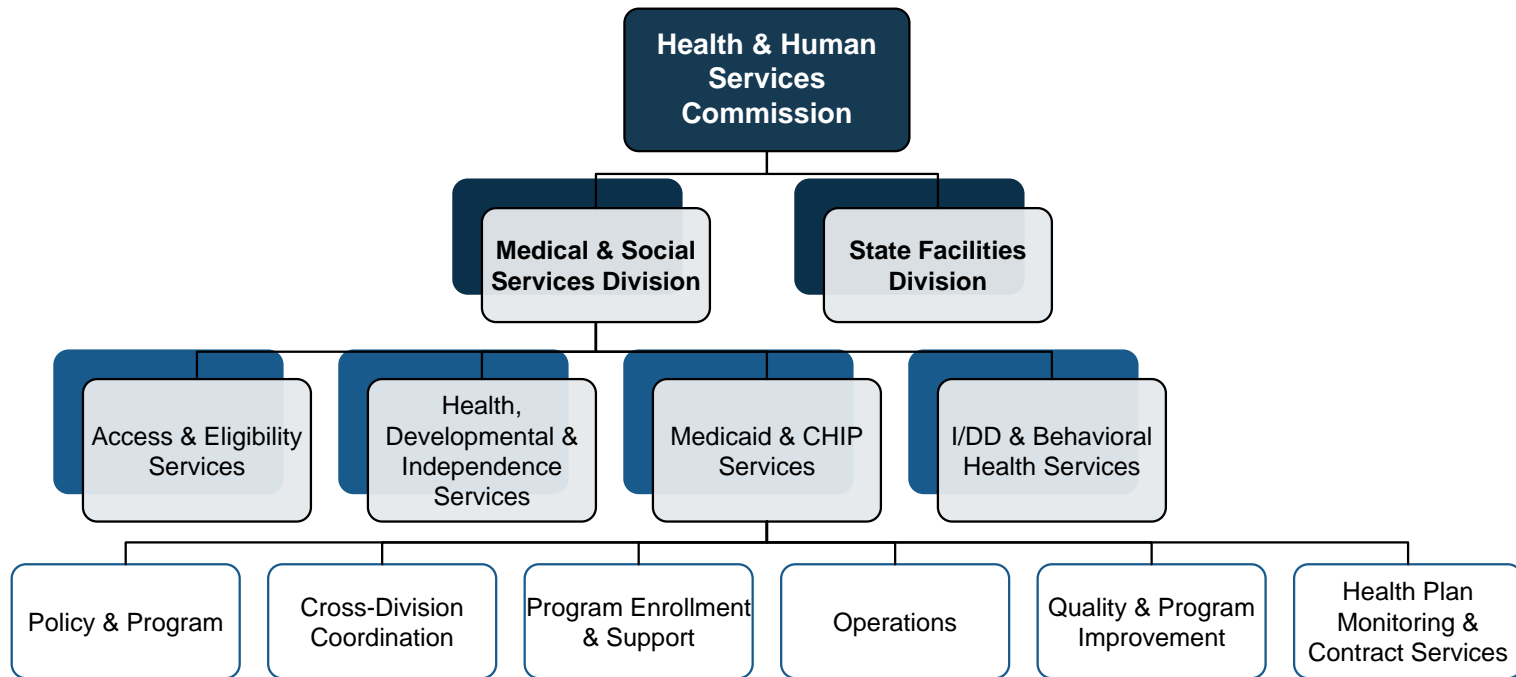
# 11. The Uninsured

## State Agency Responsible For Uninsured Citizens & Delivery System Model

<b>Physical Health Services</b>	The Texas Department Of State Health Services, Primary Care Office is responsible for providing physical health services to the safety-net population.
<b>Mental Health Services</b>	The Division For Mental Health & Substance Abuse (MHSA) within the Department Of State Health Services provides mental health services to the safety-net population through service area contracts with 39 community mental health centers called Local Mental Health Authorities.
<b>Addiction Treatment Services</b>	MHSA provides substance abuse treatment services to the safety-net population by funding provider organizations throughout the state. The intake organizations for safety-net substance abuse treatment services are called Outreach, Screening and Referral Centers (OSARs).



# 12. Organizational Chart



**CHIP** = Children's Health Insurance Plan  
**I/DD** = Intellectual & Developmental Disability

# 13. Key Leadership

Name	Position	Department
<b>Charles Smith</b>	Executive Commissioner	Health & Human Services Commission
<b>Cecile Young</b>	Chief Deputy Executive Commissioner	Health & Human Services Commission
<b>Gary Jessee</b>	Deputy Executive Commissioner	Medical & Social Services Division
<b>Jami Snyder</b>	Associate Commissioner, State Medicaid Director	Medical & Social Services Division

# 14. Program Benefits

## Federally Mandated Services

- Inpatient hospital services other than services in an institution for mental disease (IMD)
- Outpatient hospital services
- Rural Health Clinic services
- Federally Qualified Health Center (FQHC) services
- Laboratory and X-ray services
- Nursing facilities for individuals 21 and over
- Early & Periodic Screening & Diagnosis & Treatment (EPSDT)
- Family planning services and supplies for individuals of child-bearing age
- Physician services
- Medical and surgical services of a dentist
- Home health services
- Nurse midwife services
- Nurse practitioner services
- Pregnancy services, including tobacco cessation programs
- Free standing birth centers
- Non-emergency transportation to medical care

## Texas's Optional Services

- Prescription drugs
- Other practitioners' services
- Podiatry
- Limited chiropractic services
- Optometry, including eyeglasses
- Hearing instruments and related audiology
- Renal dialysis
- Physical, occupational, and speech therapy
- Clinic services
- Targeted case management for pregnant women
- Intermediate care facility services for intellectual and developmental disabilities (I/DD)
- Inpatient services for clients under age 21 or over age 65 in an institution for mental diseases
- Day activity and health services
- Targeted case management for individuals with intellectual disabilities and mental health conditions
- Hospice services

## **C. TEXAS MEDICAID FINANCING & SERVICE DELIVERY SYSTEM**

# 15. Overview

Medicaid System Characteristics		
Characteristics	Medicaid Fee-For-Service (FFS)	Medicaid Managed Care
November 2016 Enrollment*	307,330	3,756,011
SMI Enrollment	Because the SMI population must enroll in managed care unless they meet one of the FFS qualifications, the majority of the SMI population is served by managed care.	
Management	Health & Human Services Commission	1. STAR: 18 MCOs 2. STAR+PLUS: 5 MCOs 3. STAR Kids: 10 MCOs 4. STAR Health: 1 MCO
Payment Model	Fee-for-service	All: Full-risk capitation
Geographic Service Area	Statewide	1-3. Statewide, with plans available by region 4. Statewide

**Total Medicaid Beneficiaries: 4,063,341 | Total Medicaid With SMI Beneficiaries: 255,990**

\*The Medicaid population distribution was estimated using March 2016 actual enrollment and the state's estimated enrollment for the STAR Kids managed care program that launched in November 2016.

**MCO** = Managed Care Organization  
**SMI** = Serious Mental Illness  
**STAR** = State Of Texas Access Reform

# 16. Enrollment By Eligibility Group

## Mandatory Fee-For-Service (FFS) Enrollment

1. Persons enrolling as medically needy
2. Women in the Medicaid Breast and Cervical Cancer Program
3. Residents of state supported living centers
4. Persons in alien status eligible for emergency medical services only
5. Individuals residing in state veterans homes
6. Children receiving adoption assistance

## Option To Enroll In FFS Or Managed Care

1. Children in foster care
2. Native Americans/Alaskan Natives

## Mandatory Managed Care Enrollment

1. Children
2. Adults
3. Aged, blind, and disabled population
4. Dual eligibles

# 17. Fee-For-Service (FFS) Program: Program Overview

- FFS enrollment as of March 2016 was 499,467.
- The state contracts with Texas Medicaid & Healthcare Partnership (TMHP) under the leadership of Accenture to serve as the administrative services organization (ASO) for the Medicaid program.
- TMHP enrolls physicians and processes claims for the FFS program, and manages data operations for both the FFS and managed care programs.



# 18. Fee-For-Service (FFS) Program: Behavioral Health Benefits

- Behavioral Health services are provided FFS by the state.
- The serious mental illness (SMI) population is eligible for additional benefits, including targeted case management and rehabilitative services, through Local Mental Health Authorities (LMHAs), which are also delivered FFS.

## FFS Mental Health Benefits

1. Outpatient services
2. Inpatient services
3. Court-ordered services
4. Electroconvulsive therapy
5. Pharmacological management
6. Evaluations and testing
7. Individual, group, and family psychotherapy and counseling

## Benefits Provided By LMHAs To Persons With SMI

1. Rehabilitative services:
  - Day program
  - Medication training and support
  - Crisis intervention
  - Skills training and development
  - Psychosocial rehabilitative services
2. Targeted case management

## FFS Substance Abuse Treatment Benefits

1. Screening, brief intervention, and referral to treatment (SBIRT)
2. Assessment
3. Inpatient, residential, and ambulatory detoxification
4. Residential treatment
5. Ambulatory treatment
6. Medication assisted therapy
7. Opioid treatment program



## 19. Fee-For-Service (FFS) Program: Serious Mental Illness (SMI) Population

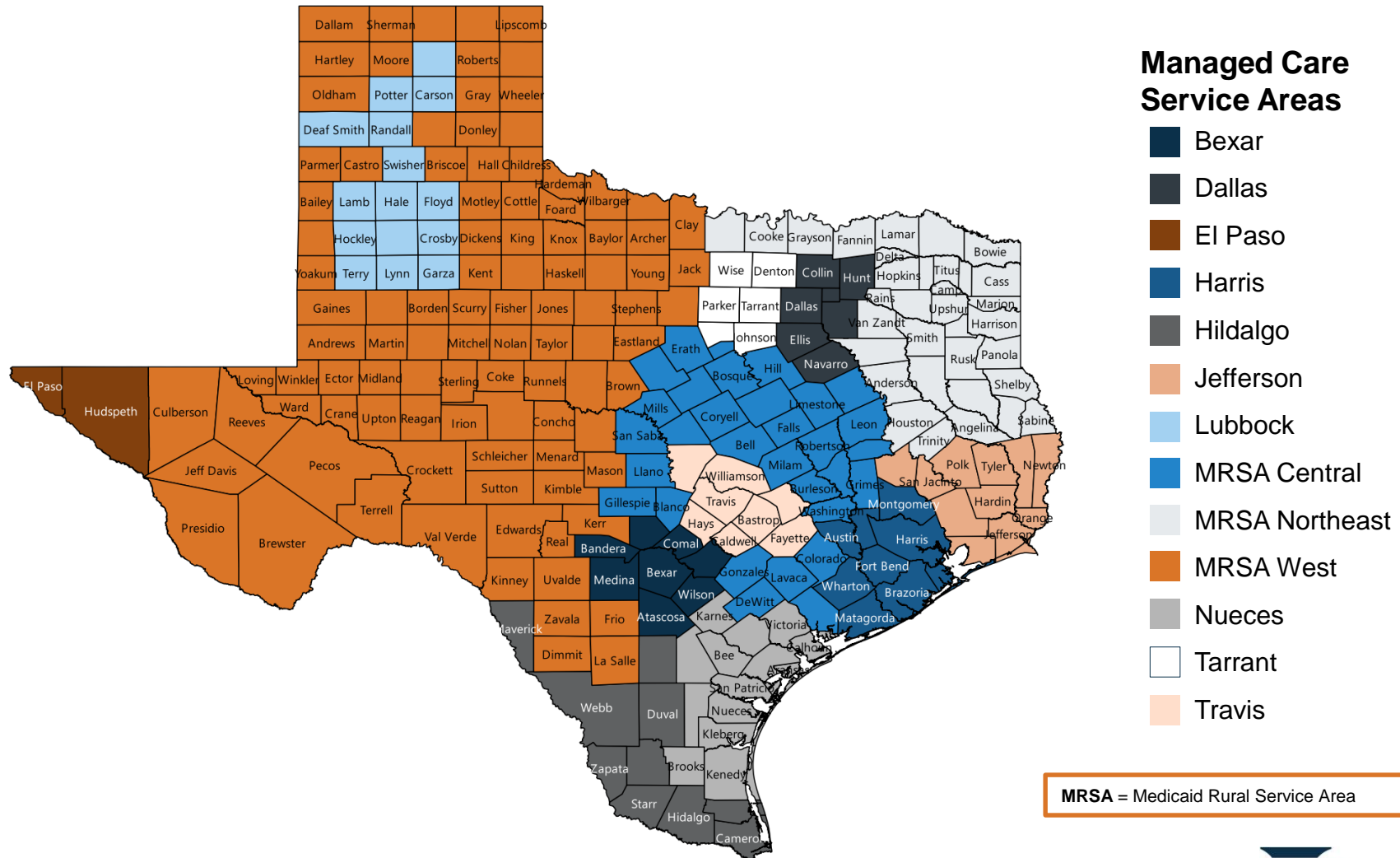
- The SMI population is mandatorily enrolled in managed care unless they meet FFS criteria for exemption.
- Persons with SMI are eligible to receive targeted case management and rehabilitative services through local mental health authorities.



## 20. Managed Care Program: Program Overview

- Managed care enrollment as of March 2016 was 3,563,874.
- Texas delivers Medicaid benefits through four managed care programs:
  - **State Of Texas Access Reform (STAR)** is the comprehensive managed care program for low-income children and families.
  - **STAR+PLUS** delivers acute care services and long-term services and supports (LTSS) to persons with disabilities and those over 65 years old.
  - **STAR Kids** is a new program, launched in November 2016, for persons with disabilities under age 21.
  - **STAR Health** is the managed care is the comprehensive managed care program for children and young adults in foster care.
- In all four managed care programs, primary care physicians (PCP) coordinate care and act as medical homes.
- The STAR, STAR+PLUS, and STAR Kids programs operate statewide, with plans available regionally in 13 service areas.
- STAR Health is a voluntary statewide program, served by a single managed care plan Superior (Centene). It had a total enrollment of 30,912 as of March 2016.

# 21. Managed Care Program: Service Areas



## 22. Managed Care Program: STAR Program

- The majority of the Medicaid population is mandatorily enrolled in the STAR Program. STAR enrollment as of March 2016 was 2,950,659.
- The STAR Program provides physical health, behavioral health, and pharmacy services for pregnant women, newborns, and children with limited income.
- The STAR Program operates statewide. There are 18 STAR managed care plans available regionally in 13 service delivery areas.
- There are at least two STAR plans available in each region, and enrollees may choose between them.

STAR = State Of Texas Access Reform

## 23. Managed Care Program: STAR+PLUS Program

- STAR+PLUS delivers physical health, behavioral health, and long-term services and supports (LTSS) to persons with disabilities and those over 65 years of age.
  - STAR+PLUS enrollment as of March 2016 was 535,907.
- To qualify for the STAR+PLUS Program, a Medicaid beneficiary must meet at least one of the following criteria:
  - Age 21 or older, receiving Supplemental Security Income (SSI) benefits, and eligible for Medicaid due to income
  - Not receiving SSI, but eligible for STAR+PLUS Home- and Community-Based Services (HCBS) waiver
  - Age 21 or older, receiving Medicaid through what are called “Social Security Exclusion Programs,” and meeting program rules for income and asset levels
  - Age 21 or older, residing in a nursing home and receiving Medicaid while in the nursing home
- The STAR+PLUS Program operates statewide with a total of five managed care organizations (MCOs) available regionally by service area. STAR+PLUS Medicaid members can select from at least two MCOs in each region.
- The STAR+PLUS HCBS Waiver provides additional LTSS to clients who are elderly or who have disabilities as a cost-effective alternative to living in a nursing facility. These services are non-traditional LTSS such as nursing, personal assistance services, adaptive aids, medical supplies, and minor home modifications to make members’ homes more accessible.

STAR = State Of Texas Access Reform

## 24. Managed Care Program: STAR Kids Program

- STAR Kids is a new mandatory managed care program, launched in November 2016, for persons with disabilities under age 21. The state expects 192,137 individuals to be eligible for the program.
- Children and young adults under the age of 21 who receive Supplemental Security Income (SSI) and those served by the following home- and community-based services (HCBS) programs are required to enroll:
  - Medically Dependent Children Program (MDCP)
  - Home- and Community-Based Services (HCBS)
  - Community Living Assistance and Supports Services (CLASS)
  - Deaf Blind with Multiple Disabilities (DBMD)
  - Texas Home Living (TxHmL)
  - Youth Empowerment Services (YES)
- Children and young adults enrolled in the other listed HCBS waiver programs will receive acute care services and service coordination through their STAR Kids managed care organization (MCO), but will receive LTSS specific to their HCBS waiver through their waiver service providers.
- The STAR Kids Program operates statewide with a total of ten MCOs available regionally by service area. STAR Kids Medicaid members can select from at least two MCOs in each area.

STAR = State Of Texas Access Reform

## 25. Managed Care Program: Behavioral Health Overview

- Mental health and substance abuse treatment services are included in capitation and are the responsibility of the MCOs.
- Special targeted case management and psychiatric rehabilitative services for the SMI population are usually the responsibility of the MCOs.
- When funded by a criminal justice agency, targeted case management and psychiatric rehabilitative services are not the responsibility of the MCOs, but instead are covered FFS by the state.



**FFS** = Fee-For-Service  
**MCO** = Managed Care Organization  
**SMI** = Serious Mental Illness

## 26. Managed Care Program: Behavioral Health Benefits

### Mental Health Benefits Provided By MCOs

1. Outpatient services
2. Inpatient services
3. Court-ordered services
4. Electroconvulsive therapy
5. Pharmacological management
6. Evaluations and testing
7. Individual, group, and family psychotherapy and counseling

### Mental Health Benefits Provided By MCOs To Persons With SMI\*

1. Rehabilitative services:
  - Day program
  - Medication training and support
  - Crisis intervention
  - Skills training and development
  - Psychosocial rehabilitative services
2. Targeted case management

### Substance Abuse Treatment Benefits Provided By MCOs

1. Screening, brief intervention, and referral to treatment (SBIRT)
2. Assessment
3. Inpatient, residential, and ambulatory detoxification
4. Residential treatment
5. Ambulatory treatment
6. Medication assisted therapy
7. Opioid treatment program

\*When funded by a criminal justice agency, targeted case managed and psychiatric rehabilitative services are not the responsibility of the MCOs, but instead are covered FFS by the state.

**FFS** = Fee-For-Service  
**MCO** = Managed Care Organization  
**SMI** = Serious Mental Illness



## 27. Managed Care Program: Serious Mental Illness (SMI) Population

- The SMI population is mandatorily enrolled in managed care unless they meet FFS criteria for exemption.
- Targeted case management services and rehabilitative services, which are specially available to persons with SMI only, are included in the MCO's capitation rate.



**FFS** = Fee-For-Service  
**MCO** = Managed Care Organization

## 28. Care Coordination Initiatives

- In 2013, Senate Bill 58 charged the Texas Health & Human Services commission with creating a health home pilot programs for individuals with serious mental illness and other chronic conditions.
- A 2015 report of the Behavioral Health Advisory Committee recommended proceeding with the creation of behavioral health integrated health homes.
- The Health & Human Services Commission has formed a work group to develop a health homes plan.



## 29. Program Waivers Impacting The Serious Mental Illness (SMI) Population

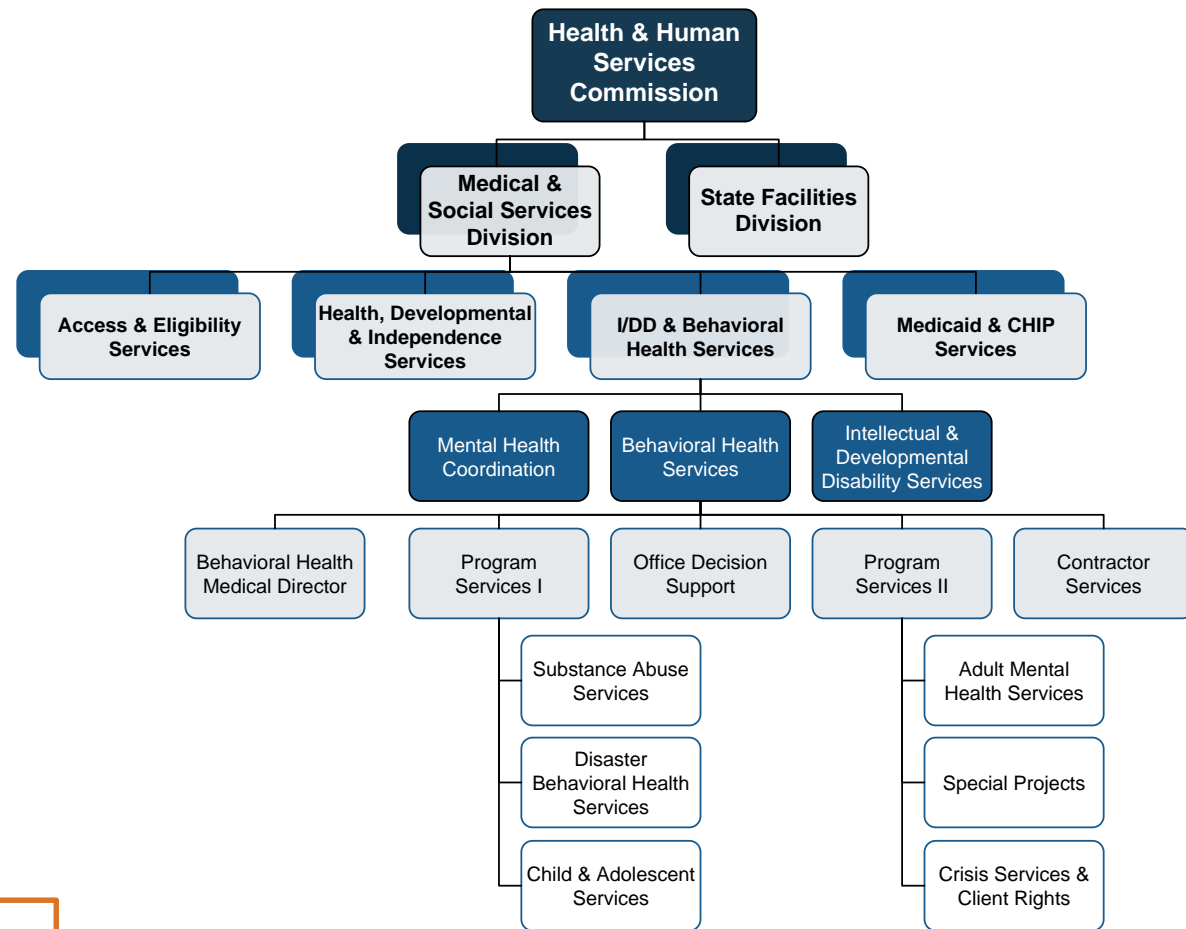
Waiver Title	Waiver Description	Waiver Type	2017 Enrollment Cap	Effective Date	Expiration Date
<b>Texas Healthcare Transformation &amp; Quality Improvement Program</b>	Expanded STAR and STAR+PLUS statewide, and used the savings to finance an uncompensated care pool and delivery system reform incentive pool.	1115	None	12/12/11	12/31/17
<b>Texas Medicaid Wellness Program (TX-22)</b>	Authorizes selective contracting for a voluntary primary care case management system for persons with chronic conditions who receive services through the FFS system.	1915 (b)	12,000	04/04/16	03/31/18

**FFS** = Fee-For-Service  
**STAR** = State Of Texas Access Reform

# D. TEXAS BEHAVIORAL HEALTH ADMINISTRATION & FINANCE SYSTEM

## 30. HHS Organizational Chart

- Mental health and substance abuse programs under the purview of the Department Of State Health Services were transferred to the Health & Human Services Commission effective September 1, 2016. State hospitals remain the responsibility of the Department Of State Health services.
- This chart reflects the new structure.



CHIP = Children's Health Insurance Program  
 HHS = Texas Health & Human Services Commission  
 I/DD = Intellectual & Developmental Disability

# 31. HHS Key Leadership

Name	Position	Department
<b>Charles Smith</b>	Executive Commissioner	Health & Human Services Commission
<b>Cecile Young</b>	Chief Deputy Executive Commissioner	Health & Human Services Commission
<b>Gary Jessee</b>	Deputy Executive Commissioner	Medical & Social Services Division
<b>Sonja Gaines</b>	Associate Commissioner, Behavioral Health & I/DD Services	Medical & Social Services Division
<b>Lauren Lacefield-Lewis</b>	Assistant Commissioner, Behavioral Health Services	Medical & Social Services Division
<b>Nina Muse, M.D.</b>	Behavioral Health Medical Director	Medical & Social Services Division
<b>Mary Sowder</b>	Section Director, Program I Services	Medical & Social Services Division
<b>Trina Ita</b>	Section Director, Program II Services	Medical & Social Services Division

**HHS** = Texas Health & Human Services Commission  
**I/DD** = Intellectual & Developmental Disability

## 32. State Psychiatric Institutions

Institution	Location	Type Of Services	Beds	FY 2015 Admissions	FY 2015 Discharges	2015 Average Daily Census
<b>Austin State Hospital</b>	Austin	Civil	299	1,792	1,778	258
<b>Big Spring State Hospital</b>	Big Spring	Forensic / Civil	200	501	500	180
<b>El Paso Psychiatric Center</b>	El Paso	Civil	74	887	885	66
<b>Kerrville State Hospital</b>	Kerrville	Forensic	202	70	67	196
<b>North Texas State Hospital</b>	Vernon, Wichita Falls	Forensic / Civil	640	1,784	1,779	566
<b>Rio Grande State Center</b>	Harlingen	Forensic / Civil	55	748	752	52
<b>Rusk State Hospital</b>	Rusk	Forensic / Civil	325	637	667	313
<b>San Antonio State Hospital</b>	San Antonio	Civil	302	1,485	1,474	268
<b>Terrell State Hospital</b>	Terrell	Civil	288	2,082	2,070	246
<b>Total</b>			<b>2,385</b>	<b>9,986</b>	<b>9,972</b>	<b>2,145</b>

# 33. Accountable Care Organizations (ACOs)

## Medicare Shared Savings Program

- |  |   |
|--|---|
| <ol style="list-style-type: none"> <li>1. Accountable Care Coalition Of North Texas, LLC</li> <li>2. Accountable Care Coalition Of Texas, Inc.</li> <li>3. ACO Providers, Inc.</li> <li>4. Amarillo Legacy Medical ACO</li> <li>5. Baylor Scott &amp; White Quality Alliance</li> <li>6. BHS Accountable Care, LLC</li> <li>7. Buena Vida Y Salud, LLC</li> <li>8. Care4Texans</li> <li>9. CAREcovenant</li> <li>10. CHI St Luke's Health Network, LLC</li> <li>11. CHI St. Joseph Health Partners ACO</li> <li>12. CHRISTUS Health Quality Care Alliance</li> <li>13. CHRISTUS Santa Rosa Quality Care Alliance, LLC</li> <li>14. Covenant ACO, Inc.</li> </ol> | <ol style="list-style-type: none"> <li>15. Essential Care Partners</li> <li>16. Genesis Accountable Physician Network, LLC</li> <li>17. Guadalupe Healthcare Network ACO, LLC</li> <li>18. Integrated ACO, LLC</li> <li>19. Medical Clinic Of North Texas, PLLC</li> <li>20. Memorial Hermann Accountable Care Organization</li> <li>21. Methodist Patient-Centered Accountable Care Organization</li> <li>22. Premier Patient Healthcare, LLC</li> <li>23. Seton Accountable Care Organization, Inc.</li> <li>24. SW Provider Partners, LLC</li> <li>25. UPSA ACO</li> <li>26. UT Southwestern Accountable Care Network</li> </ol> |
|--|---|

### ACO Invest mental Model

1. Alliance ACO, LLC
2. Sunshine ACO, LLC

### Advance Payment Model

1. Physicians ACO, LLC
2. Rio Grande Valley ACO
3. Rio Grande Valley Health Alliance, LLC
4. Texoma ACO, LLC

### Next Generation Model

1. Accountable Care Coalition Of Southeast Texas, LLC

**CHI** = Catholic Health Initiatives  
**UPSA** = United Physicians Of San Antonio  
**UT** = University Of Texas



## 34. Commercial Accountable Care Organizations (ACOs)

ACO	Commercial Insurer
Austin Regional Clinic	<ul style="list-style-type: none"> <li>• BCBSTX</li> <li>• Cigna</li> </ul>
Baptist Health System	<ul style="list-style-type: none"> <li>• Aetna</li> </ul>
Baylor Scott & White Quality Alliance	<ul style="list-style-type: none"> <li>• None</li> </ul>
Catalyst Health Network	<ul style="list-style-type: none"> <li>• None</li> </ul>
CHI St. Joseph Health Partners ACO	<ul style="list-style-type: none"> <li>• None</li> </ul>
Dallas Methodist Physicians Network	<ul style="list-style-type: none"> <li>• None</li> </ul>
Forward Health Partners	<ul style="list-style-type: none"> <li>• Children's Health</li> <li>• Cook Children's</li> </ul>
Genesis Accountable Physician Network, LLC	<ul style="list-style-type: none"> <li>• Cigna HealthSpring</li> </ul>
HeathTexas Provider Network Collaborative Accountable Care	<ul style="list-style-type: none"> <li>• None</li> </ul>
Kelsey-Seybold Collaborative Accountable Care	<ul style="list-style-type: none"> <li>• None</li> </ul>
Medical Clinic Of North Texas, PLLC	<ul style="list-style-type: none"> <li>• None</li> </ul>
Memorial Hermann ACO	<ul style="list-style-type: none"> <li>• None</li> </ul>

ACO	Commercial Insurer
Memorial Hermann Health System	<ul style="list-style-type: none"> <li>• None</li> </ul>
North Texas CIN, Inc. (TXCIN)	<ul style="list-style-type: none"> <li>• None</li> </ul>
Patient Physician Network	<ul style="list-style-type: none"> <li>• None</li> </ul>
Seton Health Alliance, Inc.	<ul style="list-style-type: none"> <li>• None</li> </ul>
St. Luke's-Renaissance Collaborative Accountable Care	<ul style="list-style-type: none"> <li>• Cigna</li> </ul>
SW Provider Partners, LLC	<ul style="list-style-type: none"> <li>• BCBSTX</li> </ul>
Tenet Healthcare	<ul style="list-style-type: none"> <li>• None</li> </ul>
Texas Health Resources	<ul style="list-style-type: none"> <li>• Aetna</li> </ul>
Texas Medical Association PracticeEdge, LLC	<ul style="list-style-type: none"> <li>• None</li> </ul>
Village Family Practice	<ul style="list-style-type: none"> <li>• None</li> </ul>
Village Health Partners	<ul style="list-style-type: none"> <li>• None</li> </ul>

**BCBSTX** = BlueCross BlueShield Of Texas  
**CHI** = Catholic Health Initiatives  
**CIN** = Clinically Integrated Network

# APPENDIX A: SOURCES

# Sources

## (Page 1 Of 8)

### A. Health Care Marketplace Overview

#### 1. Physical Health Care Coverage Map

- United States Department of Health and Human Services. (2016, October 18). 2017 QHP Landscape Individual Market Medical. Retrieved November 3, 2016 from <https://www.healthcare.gov/health-plan-information-2017/>
- United States Department of Health and Human Services. (2016, October 18). 2017 QHP Landscape SHOP Market Medical. Retrieved November 3, 2016 from <https://www.healthcare.gov/shop-health-plan-information-2017/>
- United States Department of Health and Human Services. (March 11, 2016). Addendum to the Health Insurance Marketplaces 2016 Open Enrollment Period: Final Enrollment Report. Retrieved March 24, 2016 from <https://aspe.hhs.gov/sites/default/files/pdf/188026/MarketPlaceAddendumFinal2016.pdf>
- Texas Health and Human Services Commission. (2016, March). Medicaid Enrollment By Managed Care Plan. Retrieved November 16, 2016 from <https://hhs.texas.gov/about-hhs/records-and-statistics/research-and-statistics>
- OPEN MINDS Database. (2016, November).

#### 2. Population Demographics

- United States Census Bureau. 2014 Population Estimates. Retrieved May 3, 2016 from <http://www.census.gov/popest/data/state/totals/2014/index.html>
- United States Census Bureau. 2014 Demographic and Housing Estimates. Retrieved May 3, 2016 from <http://factfinder.census.gov/faces/nav/jsf/pages/index.xhtml>
- United States Census Bureau. State Median Income. Retrieved May 3, 2016 from <https://www.census.gov/hhes/www/income/data/statemedian/index.html>
- United States Census Bureau. Poverty. Retrieved May 3, 2016 from [https://www.census.gov/hhes/www/cpstables/032015/pov/pov46\\_002.htm](https://www.census.gov/hhes/www/cpstables/032015/pov/pov46_002.htm)

#### 3. Population Distribution By Payer: United States v. Texas

- OPEN MINDS. (2016) Serious Mental Illness Prevalence Estimates

# Sources

## (Page 2 Of 8)

### A. Health Care Marketplace Overview (Continued)

#### 4. Largest Health Plans By Enrollment

- OPEN MINDS. (2016, November). Database
- Texas Health and Human Services Commission (2016, March). Medicaid Enrollment by Managed Care Plan. Retrieved November 15, 2016 from <https://hhs.texas.gov/about-hhs/records-and-statistics/research-and-statistics>

#### 5. Largest Health Plans By Estimated Serious Mental Illness (SMI) Enrollment

- OPEN MINDS. (2016, November). Database
- Texas Health and Human Services Commission (2016, March). Medicaid Enrollment by Managed Care Plan. Retrieved November 15, 2016 from <https://hhs.texas.gov/about-hhs/records-and-statistics/research-and-statistics>

#### 6. Health Insurance Marketplace Overview

- United States Department of Health and Human Services. (2016, October 18). 2017 QHP Landscape Individual Market Medical. Retrieved November 3, 2016 from <https://www.healthcare.gov/health-plan-information-2017/>
- United State Department of Health and Human Services. (2016, October 18). 2017 QHP Landscape SHOP Market Medical. Retrieved November 3, 2016 from <https://www.healthcare.gov/shop-health-plan-information-2017/>

#### 7. Health Insurance Marketplace Plans

- United States Department of Health and Human Services. (2016, October 18). 2017 QHP Landscape Individual Market Medical. Retrieved November 3, 2016 from <https://www.healthcare.gov/health-plan-information-2017/>
- United State Department of Health and Human Services. (2016, October 18). 2017 QHP Landscape SHOP Market Medical. Retrieved November 3, 2016 from <https://www.healthcare.gov/shop-health-plan-information-2017/>

### B. Medicaid System Overview

#### 8. Delivery System, Risk, & Federal Participation

- Information compiled from sources provided throughout the profile.

# Sources

## (Page 3 Of 8)

---

### **B. Medicaid System Overview (Continued)**

#### **9. Expansion Decision**

- Information compiled from sources provided throughout the profile.

#### **10. Care Coordination Entities**

- Information compiled from sources provided throughout the profile.

#### **11. The Uninsured**

- Information compiled from sources provided throughout the profile.

#### **12. Organizational Chart**

- Texas Health and Human Services Commission. (2016, October 17). Organizational Chart. Provided November 16, 2016 to *OPEN MINDS* by the Health and Human Services Commission via e-mail.

#### **13. Key Leadership**

- Texas Health and Human Services Commission. (2016, October 17). Organizational Chart. Provided November 16, 2016 to *OPEN MINDS* by the Health and Human Services Commission via e-mail.
- Texas Health and Human Services Commission. (2016, June 15). Medicaid State Plan. Retrieved November 7, 2016 from <https://hhs.texas.gov/services/health/medicaid-and-chip/about-medicaid/state-plan>

#### **14. Program Benefits**

- Texas Health and Human Services Commission. (2015, February). Texas Medicaid and CHIP in Perspective. Retrieved November 7, 2016 from [https://hhs.texas.gov/sites/hhs/files/basic\\_page/pinkbook-2.pdf](https://hhs.texas.gov/sites/hhs/files/basic_page/pinkbook-2.pdf)

# Sources

## (Page 4 Of 8)

### C. Medicaid Financing & Service Delivery System

#### 15. Overview

- Texas Health and Human Services Commission (2016, March). Medicaid Enrollment by Managed Care Plan. Retrieved November 15, 2016 from <https://hhs.texas.gov/about-hhs/records-and-statistics/research-and-statistics>
- Texas Health and Human Services Commission. (2015, February). Texas Medicaid and CHIP in Perspective. Retrieved November 7, 2016 from [https://hhs.texas.gov/sites/hhs/files/basic\\_page/pinkbook-2.pdf](https://hhs.texas.gov/sites/hhs/files/basic_page/pinkbook-2.pdf)
- Texas Health and Human Services Commission. (2013, December 12). Presentation to the STAR Kids Advisory Committee. Retrieved November 17, 2016 from <https://hhs.texas.gov/sites/hhs/files/documents/about-hhs/leadership/advisory-committees/star-kids/STARPLUS-Presentation-1213.pdf>

#### 16. Enrollment By Eligibility Group

- Texas Health and Human Services Commission. (2016, May 2). Texas Healthcare Transformation and Quality Improvement Program. Retrieved November 11, 2016 from [https://www.medicaid.gov/medicaid/section-1115-demo/demonstration-and-waiver-list/waivers\\_faceted.html](https://www.medicaid.gov/medicaid/section-1115-demo/demonstration-and-waiver-list/waivers_faceted.html)

#### 17. Fee-For-Service (FFS) Program: Program Overview

- Texas Health and Human Services Commission (2016, March). Medicaid Enrollment by Managed Care Plan. Retrieved November 15, 2016 from <https://hhs.texas.gov/about-hhs/records-and-statistics/research-and-statistics>
- Texas Health and Human Services Commission. (2015, February). Texas Medicaid and CHIP in Perspective. Retrieved November 7, 2016 from [https://hhs.texas.gov/sites/hhs/files/basic\\_page/pinkbook-2.pdf](https://hhs.texas.gov/sites/hhs/files/basic_page/pinkbook-2.pdf)
- Accenture. (2014, July 31). Accenture Chosen as Texas Medicaid Vendor. Retrieved November 16, 2017 from <https://newsroom.accenture.com/industries/health-public-service/accenture-chosen-as-lead-texas-medicaid-vendor.htm>

#### 18. Fee-For-Service (FFS) Program: Behavioral Health Benefits

- Texas Medicaid and Health Partnership. (2016, November). Texas Medicaid Provider Procedures Manual: Behavioral Health Handbook. Retrieved November 16, 2016 from [http://www.tmhp.com/tmpppm/tmpppm\\_living\\_manual\\_current/Vol2\\_Behavioral\\_Health\\_Handbook.pdf](http://www.tmhp.com/tmpppm/tmpppm_living_manual_current/Vol2_Behavioral_Health_Handbook.pdf)

# Sources

## (Page 5 Of 8)

### **C. Medicaid Financing & Service Delivery System (Continued)**

#### **19. Fee-For-Service (FFS) Program: Serious Mental Illness (SMI) Population**

- Texas Medicaid and Health Partnership. (2016, November). Texas Medicaid Provider Procedures Manual: Behavioral Health Handbook. Retrieved November 16, 2016 from [http://www.tmhp.com/tmpppm/tmpppm\\_living\\_manual\\_current/Vol2\\_Behavioral\\_Health\\_Handbook.pdf](http://www.tmhp.com/tmpppm/tmpppm_living_manual_current/Vol2_Behavioral_Health_Handbook.pdf)

#### **20. Managed Care Program: Program Overview**

- Texas Health and Human Services Commission (2016, March). Medicaid Enrollment by Managed Care Plan. Retrieved November 15, 2016 from <https://hhs.texas.gov/about-hhs/records-and-statistics/research-and-statistics>
- Texas Health and Human Services Commission. (2015, February). Texas Medicaid and CHIP in Perspective. Retrieved November 7, 2016 from [https://hhs.texas.gov/sites/hhs/files/basic\\_page/pinkbook-2.pdf](https://hhs.texas.gov/sites/hhs/files/basic_page/pinkbook-2.pdf)

#### **21. Managed Care Program: Service Areas**

- Texas Health and Human Services Commission (2016, March). Medicaid Enrollment by Managed Care Plan. Retrieved November 15, 2016 from <https://hhs.texas.gov/about-hhs/records-and-statistics/research-and-statistics>

#### **22. Managed Care Program: STAR Program**

- Texas Health and Human Services Commission (2016, March). Medicaid Enrollment by Managed Care Plan. Retrieved November 15, 2016 from <https://hhs.texas.gov/about-hhs/records-and-statistics/research-and-statistics>
- Texas Health and Human Services Commission. (2015, February). Texas Medicaid and CHIP in Perspective. Retrieved November 7, 2016 from [https://hhs.texas.gov/sites/hhs/files/basic\\_page/pinkbook-2.pdf](https://hhs.texas.gov/sites/hhs/files/basic_page/pinkbook-2.pdf)

#### **23. Managed Care Program: STAR+PLUS Program**

- Texas Health and Human Services Commission (2016, March). Medicaid Enrollment by Managed Care Plan. Retrieved November 15, 2016 from <https://hhs.texas.gov/about-hhs/records-and-statistics/research-and-statistics>
- Texas Health and Human Services Commission. (2015, February). Texas Medicaid and CHIP in Perspective. Retrieved November 7, 2016 from [https://hhs.texas.gov/sites/hhs/files/basic\\_page/pinkbook-2.pdf](https://hhs.texas.gov/sites/hhs/files/basic_page/pinkbook-2.pdf)

# Sources

## (Page 6 Of 8)

### **C. Medicaid Financing & Service Delivery System (Continued)**

#### **24. Managed Care Program: STAR Kids Program**

- Texas Health and Human Services Commission. (2013, December 12). Presentation to the STAR Kids Advisory Committee. Retrieved November 17, 2016 from <https://hhs.texas.gov/sites/hhs/files/documents/about-hhs/leadership/advisory-committees/star-kids/STARPLUS-Presentation-1213.pdf>
- Texas Health and Human Services Commission. (2016, November 1). STAR Kids Contract Terms. Retrieved November 16, 2016 from <https://hhs.texas.gov/sites/hhs/files/documents/laws-regulations/handbooks/star-kids-contract.pdf>

#### **25. Managed Care Program: Behavioral Health Overview**

- Texas Medicaid and Health Partnership. (2016, November). Texas Medicaid Provider Procedures Manual: Behavioral Health Handbook. Retrieved November 16, 2016 from [http://www.tmhp.com/tmppm/tmppm\\_living\\_manual\\_current/Vol2\\_Behavioral\\_Health\\_Handbook.pdf](http://www.tmhp.com/tmppm/tmppm_living_manual_current/Vol2_Behavioral_Health_Handbook.pdf)

#### **26. Managed Care Program: Behavioral Health Benefits**

- Texas Medicaid and Health Partnership. (2016, November). Texas Medicaid Provider Procedures Manual: Behavioral Health Handbook. Retrieved November 16, 2016 from [http://www.tmhp.com/tmppm/tmppm\\_living\\_manual\\_current/Vol2\\_Behavioral\\_Health\\_Handbook.pdf](http://www.tmhp.com/tmppm/tmppm_living_manual_current/Vol2_Behavioral_Health_Handbook.pdf)

#### **27. Managed Care Program: Serious Mental Illness (SMI) Population**

- Texas Medicaid and Health Partnership. (2016, November). Texas Medicaid Provider Procedures Manual: Behavioral Health Handbook. Retrieved November 16, 2016 from [http://www.tmhp.com/tmppm/tmppm\\_living\\_manual\\_current/Vol2\\_Behavioral\\_Health\\_Handbook.pdf](http://www.tmhp.com/tmppm/tmppm_living_manual_current/Vol2_Behavioral_Health_Handbook.pdf)



# Sources

## (Page 7 Of 8)

### C. Medicaid Financing & Service Delivery System (Continued)

#### 28. Care Coordination Initiatives

- Centers for Medicare and Medicaid Services. (2015, December). Approved Medicaid Health Home State Plan Amendments. Retrieved May 9, 2016 from [https://www.medicaid.gov/state-resource-center/medicaid-state-technical-assistance/health-homes-technical-assistance/downloads/hh-map\\_v51.pdf](https://www.medicaid.gov/state-resource-center/medicaid-state-technical-assistance/health-homes-technical-assistance/downloads/hh-map_v51.pdf)
- Texas Behavioral Health Integration Advisory Committee. (2015, July 8). Second Report to the Health and Human Services Commission. Retrieved November 9, 2016 from <https://hhs.texas.gov/sites/hhs/files/documents/about-hhs/leadership/advisory-committees/bhiac/BHIAC-Phase-II-recommendations.pdf>
- Texas State Legislature (2013, June 14). Senate Bill 58. Retrieved November 11, 2016 from <https://legiscan.com/TX/bill/SB58/2013>

#### 29. Program Waivers Impacting The Serious Mental Illness (SMI) Population

- Centers for Medicare and Medicaid Services. Demonstrations and Waivers. Retrieved November 11, 2016 from [https://www.medicaid.gov/medicaid-chip-program-information/by-topics/waivers/waivers\\_faceted.html](https://www.medicaid.gov/medicaid-chip-program-information/by-topics/waivers/waivers_faceted.html)

### D. Behavioral Health Administration & Finance System

#### 30. HHS Organizational Chart

- Texas Health and Human Services Commission. (2016, October 17). Organizational Chart. Provided November 16, 2016 to *OPEN MINDS* by the Health and Human Services Commission via e-mail.

#### 31. HHS MHSA Key Leadership

- Texas Health and Human Services Commission. (2016, October 17). Organizational Chart. Provided November 16, 2016 to *OPEN MINDS* by the Health and Human Services Commission via e-mail.

# Sources

## (Page 8 Of 8)

---

### D. Behavioral Health Administration & Finance System (Continued)

#### 32. State Psychiatric Institutions

- Texas Department of State Health Services. State Mental Health Facility Indicators, 4<sup>th</sup> Quarter 2015. Retrieved November 8, 2016 from <http://www.dshs.texas.gov/mhreports/PIMHpub.shtm>

#### 33. Accountable Care Organizations (ACOs)

- OPEN MINDS Database

#### 34. Commercial Accountable Care Organizations (ACOs)

- OPEN MINDS Database